

6.2 +/- Ac Homesite for Sale in Camden County, GA
0 Pine Bluff Ct
Woodbine, GA 31569

\$85,000
6.200± Acres
Camden County



6.2 +/- Ac Homesite for Sale in Camden County, GA Woodbine, GA / Camden County

SUMMARY

Address

0 Pine Bluff Ct

City, State Zip

Woodbine, GA 31569

County

Camden County

Type

Undeveloped Land

Latitude / Longitude

30.955193 / -81.742625

Acreage

6.200

Price

\$85,000

Property Website

<https://www.mossyoakproperties.com/property/6-2-ac-homesite-for-sale-in-camden-county-ga-camden-georgia/97503/>



6.2 +/- Ac Homesite for Sale in Camden County, GA Woodbine, GA / Camden County

PROPERTY DESCRIPTION

Description

Homesite - 6.2 +/- Acres in Camden County, GA

This 6.2 +/- acre tract in Camden County, GA is an excellent homesite opportunity located in Plantation Pointe. The property offers a great mix of usable land with 2.57 +/- acres of cleared pasture and 3.63 +/- acres of wooded acreage, giving you open space and privacy.

Whether you're looking to build your dream home, start a small homestead, or invest in a growing area, this tract checks all the boxes for a well-rounded homesite in a desirable location.

Property Features:

- 6.2 +/- Acres in Camden County, GA
- 2.57 +/- Acres of Cleared Pasture
- 3.63 +/- Acres of Wooded Acreage
- Great Spot for a Homesite

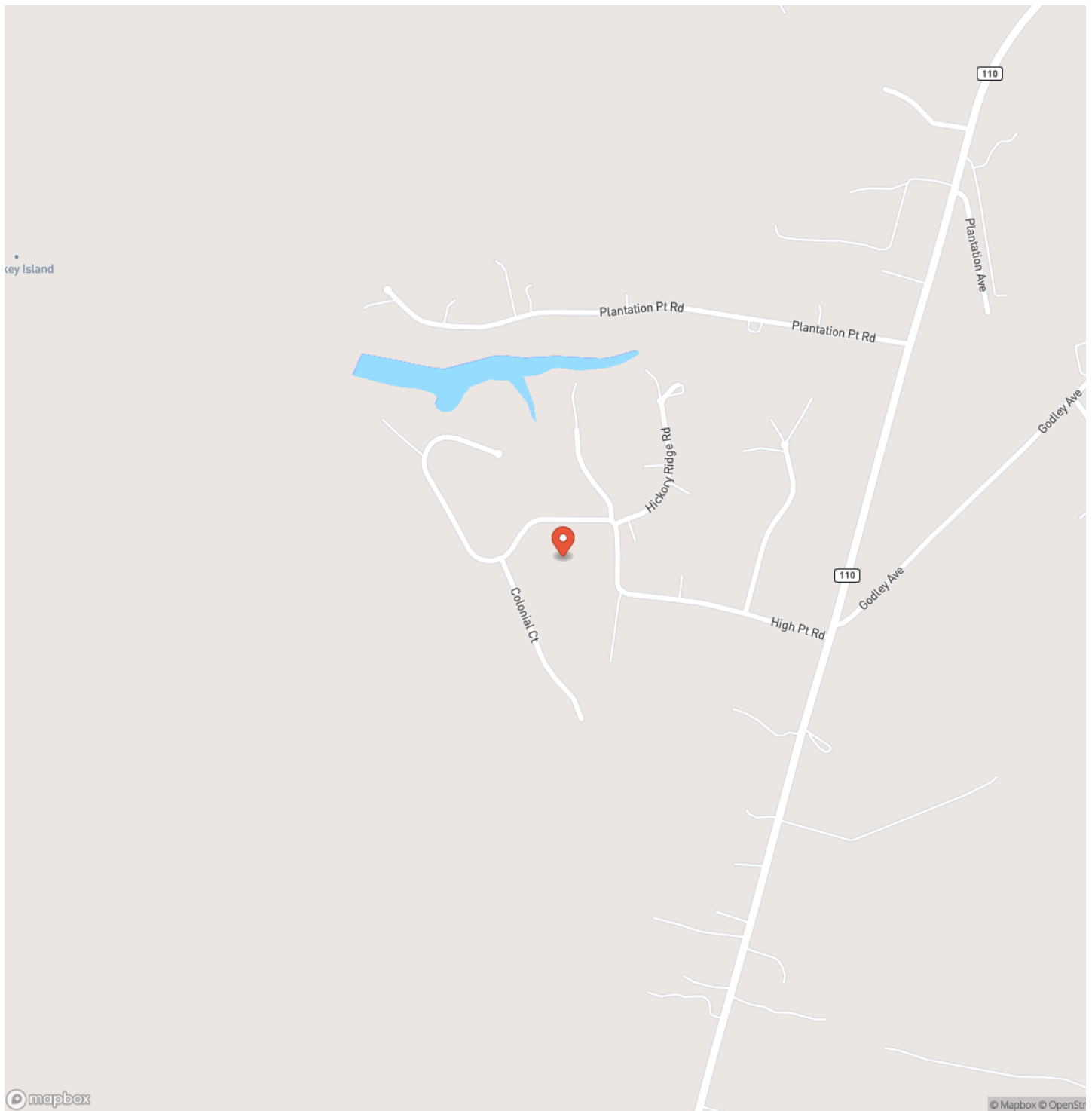
18 Minutes to Kingsland, GA, 29 Minutes to St. Marys, GA, 30 Minutes to Kings Bay Naval Base, 33 Minutes to Brunswick, GA, 50 Minutes to Jacksonville, FL, 1 Hour 32 Minutes to Savannah, GA

Contact Brogan Napier (Cell: [904-814-9737](tel:904-814-9737)) with Mossy Oak Properties for more information on this property or others like it.

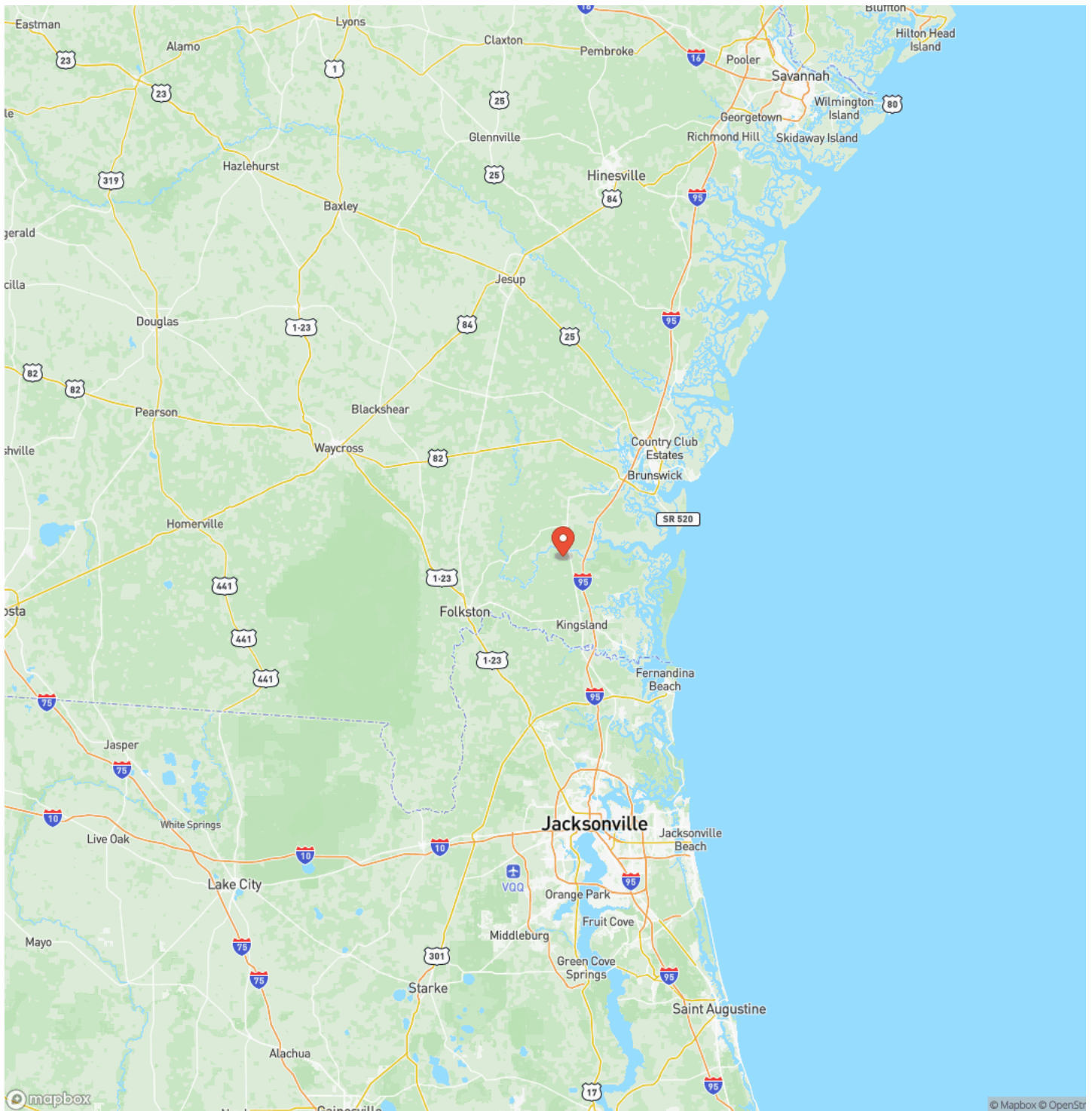
6.2 +/- Ac Homesite for Sale in Camden County, GA
Woodbine, GA / Camden County



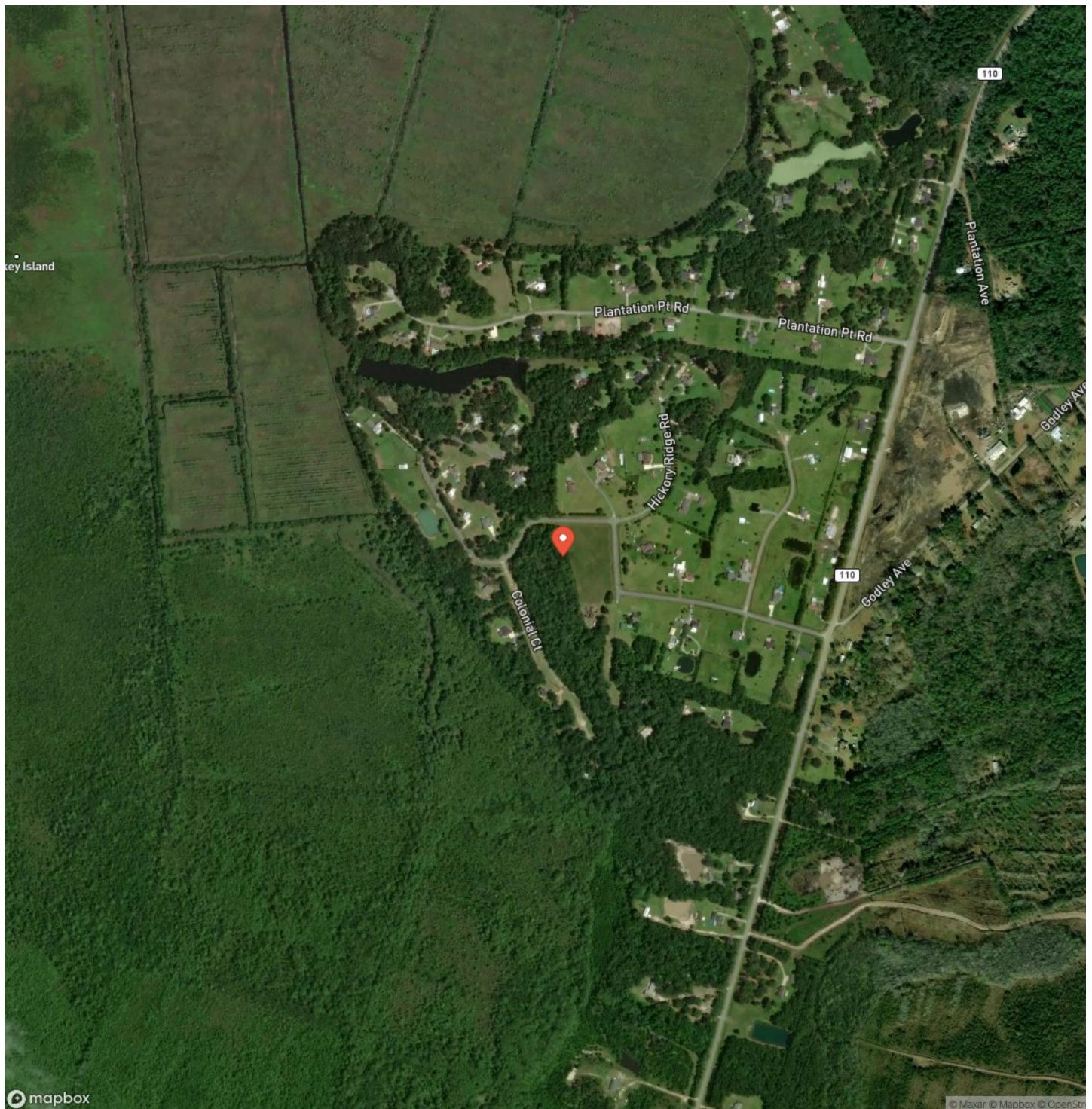
Locator Map



Locator Map



Satellite Map



6.2 +/- Ac Homesite for Sale in Camden County, GA Woodbine, GA / Camden County

LISTING REPRESENTATIVE

For more information contact:



Representative

Brogan Napier

Mobile

(904) 814-9737

Office

(912) 674-2700

Email

bnapier@mossyoakproperties.com

Address

309 Arnow Court

City / State / Zip

NOTES

[illegible]

This image shows a single sheet of white paper with horizontal ruling lines. The lines are evenly spaced and run across the width of the page. There are no margins, text, or other markings on the paper.



MossyOakProperties.com

DISCLAIMERS

Information in this brochure is provided solely for information purposes and does not constitute an offer to sell or advertise real estate outside the states in which broker or agent licensed. The information presented has been obtained from sources deemed to be reliable, but is not guaranteed or warranted by the agent, broker, or the sellers of these properties. This offering is subject to errors, omissions, prior sale, price change, correction or withdrawal from the market without notice. All references to age, square footage, income, expenses, acreage, carrying capacity, and land classification, etc. are approximate. Prospective buyers are chargeable with and expected to conduct their own independent investigation of the information and the property and to rely only on those results. Sellers reserve the right to accept or reject any and all offers without liability to any buyer or cooperating broker.

Maps are provided for illustration purposes only, the accuracy is not warranted. Parcels on interactive maps are not adjusted to match aerial backgrounds. This information is for reference purposes only and is not a legal document. Data maps contain errors. The seller and seller's agent are making known to all potential buyers that there may be variations between the location of the existing fence lines and the legal description of the deeded property. Seller and seller's agent make no warranties with regard to the location of the fence lines in relationship to the deeded property lines, nor does the Seller make any warranties or representations with regard to the specific acreage contained within the fenced property lines. Seller is selling the property in an "as is" condition, which includes the location of the fences as they exist. Boundaries shown on the accompanying maps are approximate, based on county parcel data. The maps are not to scale. The accuracy of the maps is not guaranteed. Prospective buyers are encouraged to verify fence lines, deeded property lines and acreages using a licensed surveyor at their own expense.

Mossy Oak Properties Coastal Land and Real Estate

309 Arnow Court
Saint Marys, GA 31558
(912) 674-2700
MossyOakProperties.com

