

6.84 +/- Ac Land for Sale in Camden County, GA
0 Ga Hwy 40
Kingsland, GA 31548

\$75,000
6.84± Acres
Camden County



**6.84 +/- Ac Land for Sale in Camden County, GA
Kingsland, GA / Camden County**

SUMMARY

Address

0 Ga Hwy 40

City, State Zip

Kingsland, GA 31548

County

Camden County

Type

Undeveloped Land

Latitude / Longitude

30.809655 / -81.806202

Acreage

6.84

Price

\$75,000



6.84 +/- Ac Land for Sale in Camden County, GA Kingsland, GA / Camden County

PROPERTY DESCRIPTION

6.84 +/- Acres in Camden County, GA

This 6.84 +/- acre tract in Camden County, GA offers an excellent opportunity for a homesite or long-term investment. Featuring paved road frontage along Highway 40 and convenient access to nearby amenities and major travel routes, this property is well-positioned for both residential and recreational use.

With plenty of usable space and an excellent location, the property provides the perfect setting for a private homesite while still being close to Kingsland, GA , and Interstate 95.

Property Features:

- 6.84 +/- Acres in Camden County, GA
- Paved Road Frontage on Highway 40
- Excellent Homesite Opportunity
- Convenient Access to I-95
- Great Investment Potential
- Easy Access to Nearby Towns and Amenities

Location:

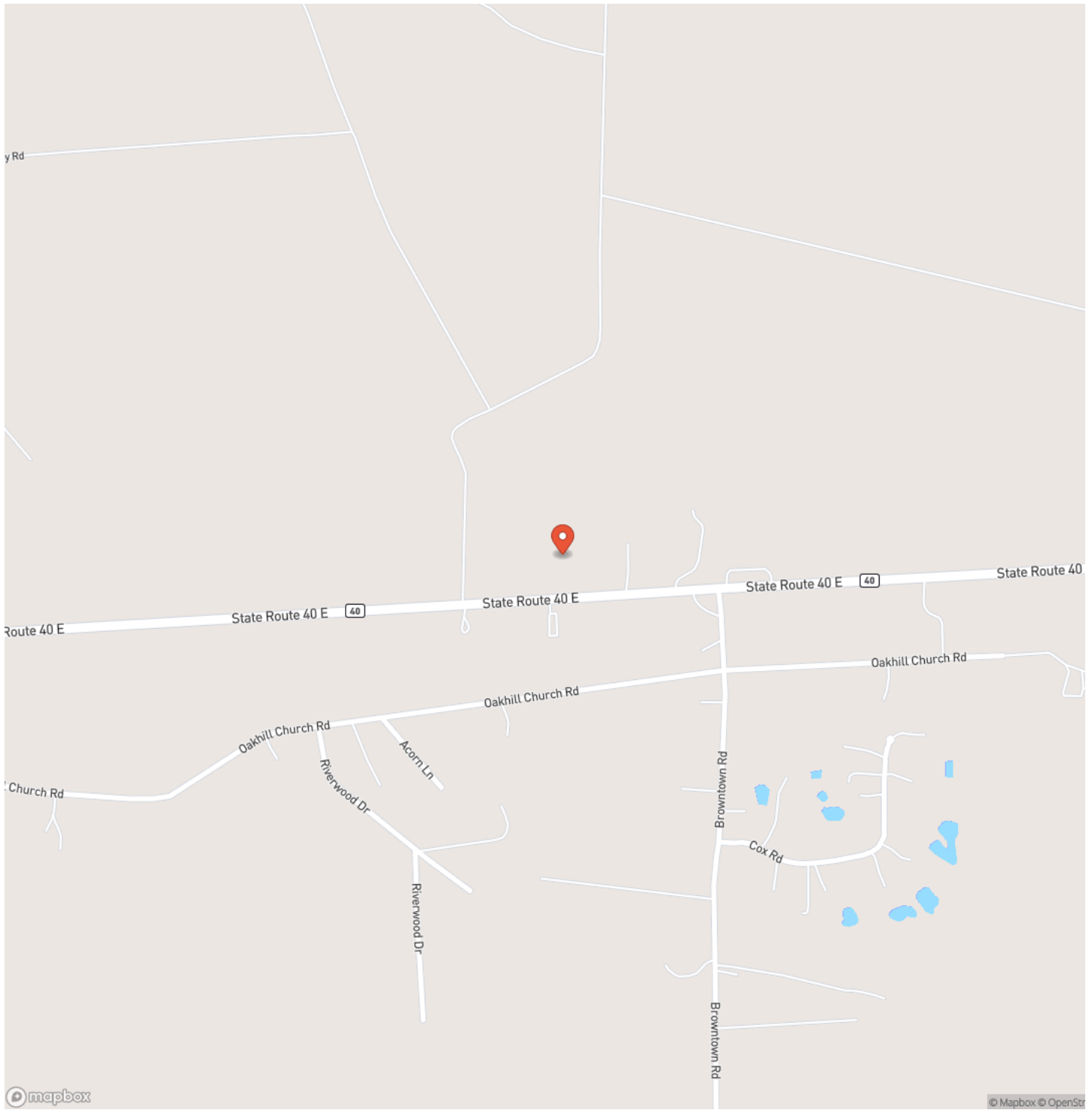
- 8 Minutes to Kingsland, GA
- 13 Minutes to I-95
- 15 Minutes to Camden County High School
- 16 Minutes to Folkston, GA
- 25 Minutes to Kings Bay Naval Base
- 30 Minutes to the St. Marys Waterfront
- 46 Minutes to Jacksonville, FL

Contact Brogan Napier (Cell: [904-814-9737](tel:904-814-9737)) with Mossy Oak Properties for more information on this property or others like it.

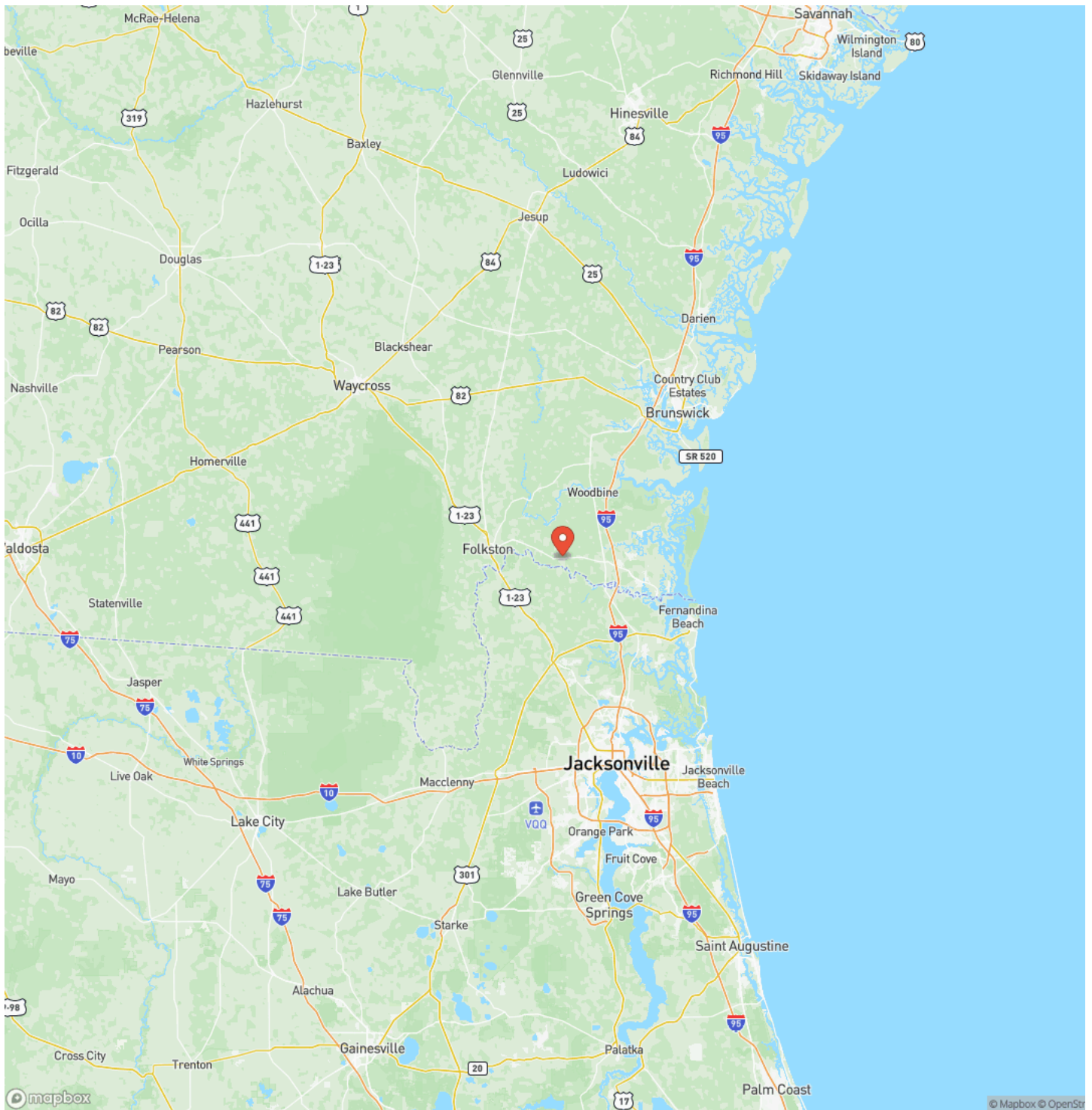
6.84 +/- Ac Land for Sale in Camden County, GA
Kingsland, GA / Camden County



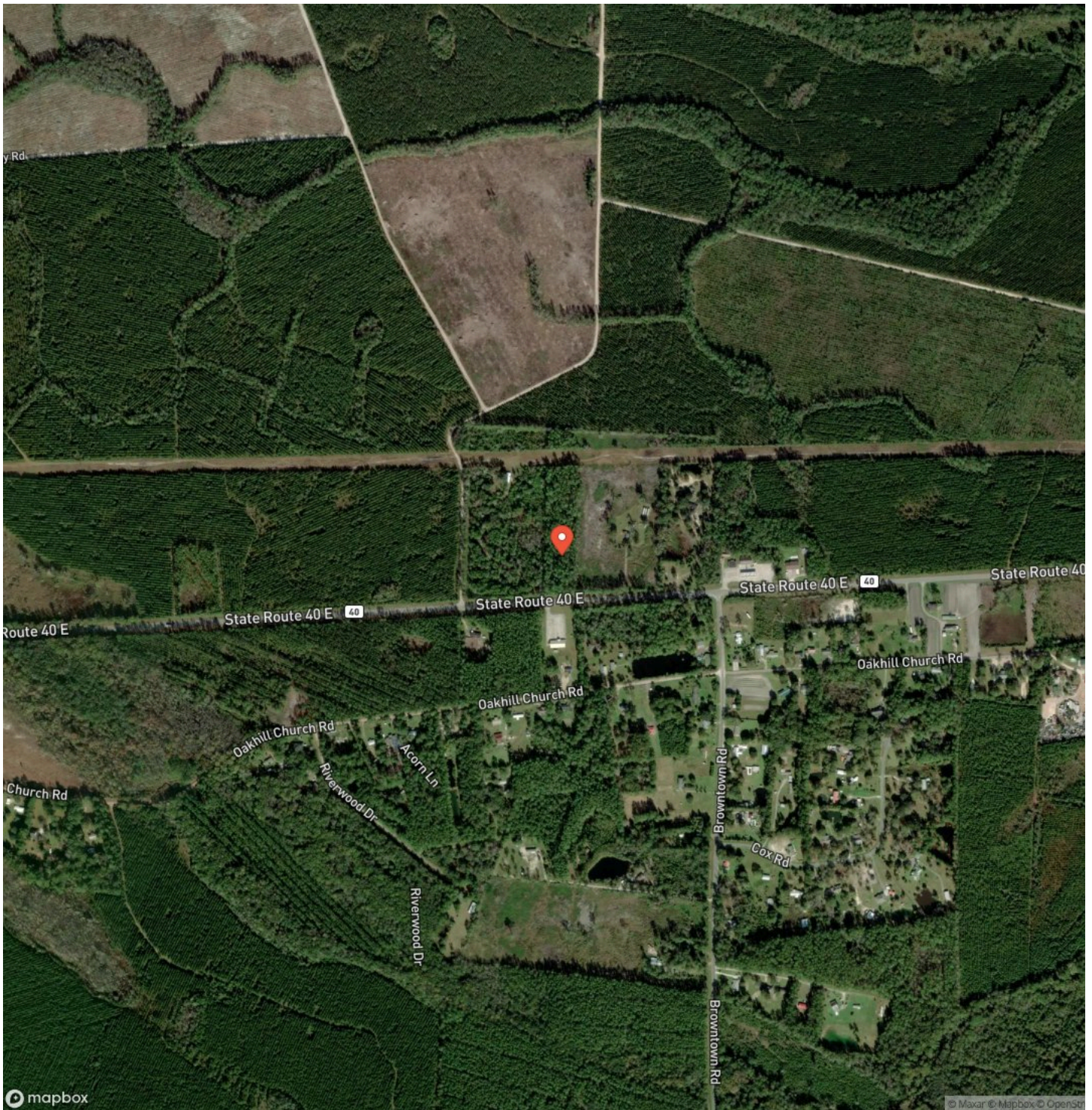
Locator Map



Locator Map



Satellite Map



DISCLAIMERS

Information in this brochure is provided solely for information purposes and does not constitute an offer to sell or advertise real estate outside the states in which broker or agent licensed. The information presented has been obtained from sources deemed to be reliable, but is not guaranteed or warranted by the agent, broker, or the sellers of these properties. This offering is subject to errors, omissions, prior sale, price change, correction or withdrawal from the market without notice. All references to age, square footage, income, expenses, acreage, carrying capacity, and land classification, etc. are approximate. Prospective buyers are chargeable with and expected to conduct their own independent investigation of the information and the property and to rely only on those results. Sellers reserve the right to accept or reject any and all offers without liability to any buyer or cooperating broker.

Maps are provided for illustration purposes only, the accuracy is not warranted. Parcels on interactive maps are not adjusted to match aerial backgrounds. This information is for reference purposes only and is not a legal document. Data maps contain errors. The seller and seller's agent are making known to all potential buyers that there may be variations between the location of the existing fence lines and the legal description of the deeded property. Seller and seller's agent make no warranties with regard to the location of the fence lines in relationship to the deeded property lines, nor does the Seller make any warranties or representations with regard to the specific acreage contained within the fenced property lines. Seller is selling the property in an "as is" condition, which includes the location of the fences as they exist. Boundaries shown on the accompanying maps are approximate, based on county parcel data. The maps are not to scale. The accuracy of the maps is not guaranteed. Prospective buyers are encouraged to verify fence lines, deeded property lines and acreages using a licensed surveyor at their own expense.

Mossy Oak Properties Coastal Land and Real Estate
309 Arnow Court
Saint Marys, GA 31558
(912) 674-2700
<https://mossyoakproperties.com/>

