

**25 +/- ACRES RECREATIONAL LAND FOR SALE IN
TREUTLEN COUNTY, GA**
0 Ga 199
Soperton, GA 30457

\$132,000
25± Acres
Treutlen County



25 +/- ACRES RECREATIONAL LAND FOR SALE IN TREUTLEN COUNTY, GA
Soperton, GA / Treutlen County

SUMMARY

Address

0 Ga 199 null

City, State Zip

Soperton, GA 30457

County

Treutlen County

Type

Recreational Land, Hunting Land, Undeveloped Land

Latitude / Longitude

32.335157 / -82.634781

Acreage

25

Price

\$132,000



25 +/- ACRES RECREATIONAL LAND FOR SALE IN TREUTLEN COUNTY, GA Soperton, GA / Treutlen County

PROPERTY DESCRIPTION

25 +/- ACRES RECREATIONAL LAND FOR SALE IN TREUTLEN COUNTY, GA

Excellent recreational, hunting, and homesite tract located in Treutlen County, GA. This 25 +/- acre property features paved road frontage, an established trail system throughout the property, and a creek running through the tract, creating excellent wildlife habitat and recreational opportunities. A cleared area at the front of the property provides the perfect location for a homesite, cabin, or hunting camp.

Whether you're looking for a private weekend retreat, hunting property, or future homesite, this tract offers a great combination of accessibility, natural features, and privacy. Deer, turkey, and other wildlife are commonly found in the area, making it an excellent recreational investment.

Property Features:

- 25 +/- Acres in Treutlen County, GA
- Paved Road Frontage
- Established Trail System Throughout Property
- Creek Running Through Property
- Power Available at Road
- Cleared Area Ideal for a Homesite or Hunting Camp
- Excellent Hunting and Recreational Opportunities
- Private and Peaceful Setting
- Great Weekend Getaway Property

Location:

- 26 Minutes to Dublin, GA
- 53 Minutes to Baxley, GA
- 1 Hour 6 Minutes to Macon, GA
- 1 Hour 16 Minutes to Douglas, GA
- 1 Hour 25 Minutes to Jesup, GA
- 1 Hour 32 Minutes to Savannah, GA
- 3 Hours 1 Minute to Jacksonville, FL

Contact Brogan Napier (Cell: [904-814-9737](tel:904-814-9737)) with Mossy Oak Properties for more information or to schedule a showing.

25 +/- ACRES RECREATIONAL LAND FOR SALE IN TREUTLEN COUNTY, GA
Soperton, GA / Treutlen County

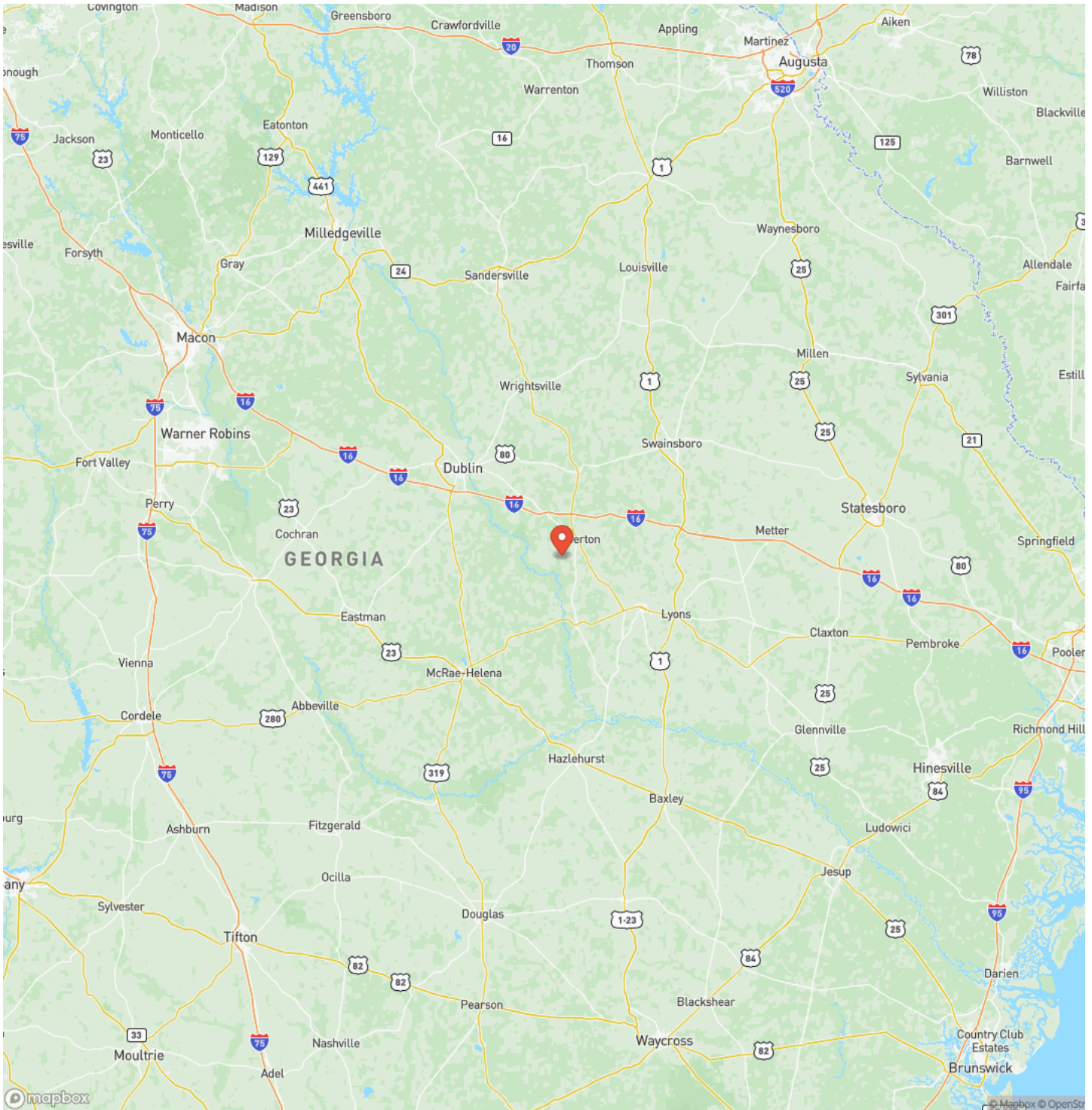


Locator Map

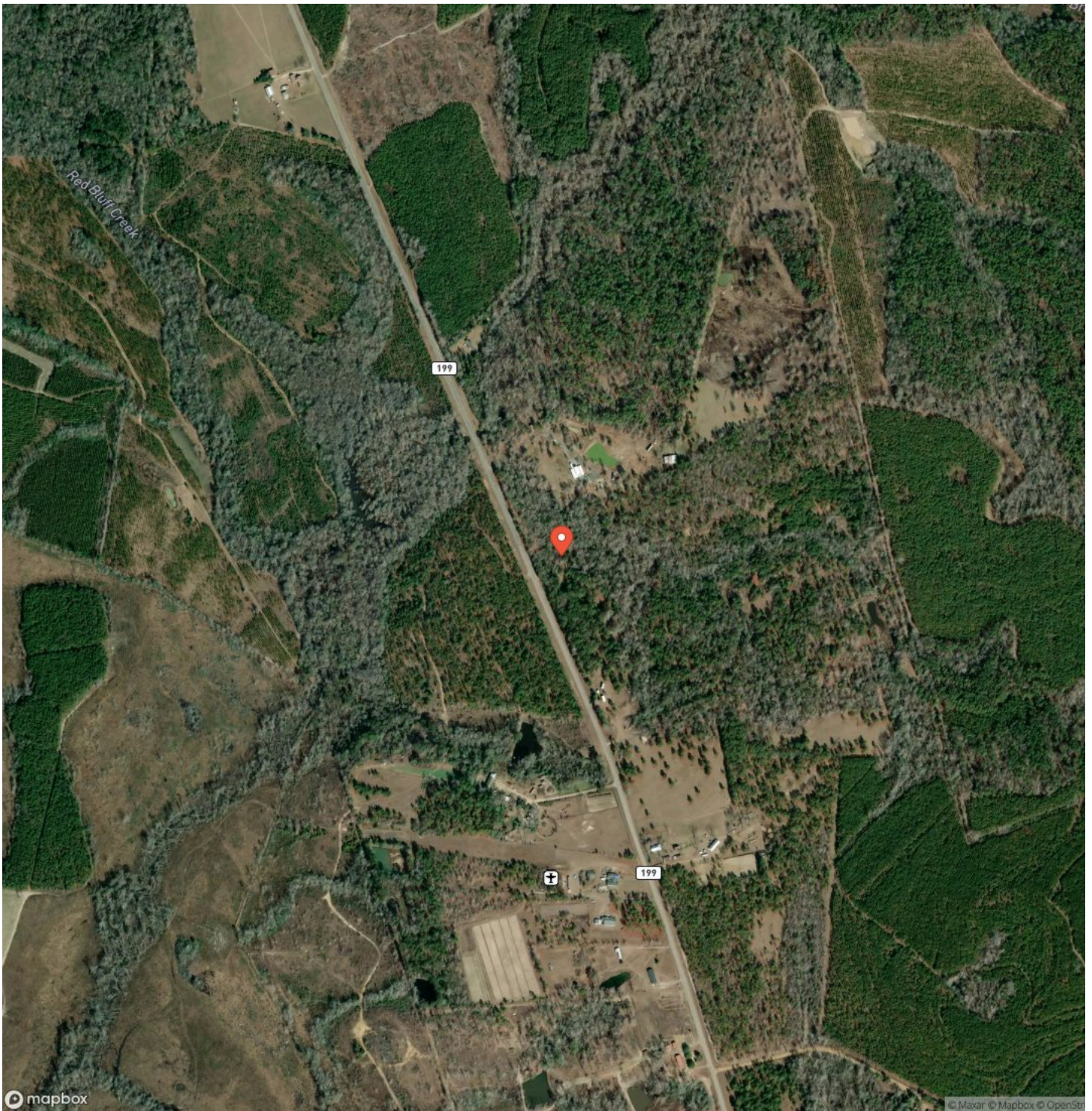


25 +/- ACRES RECREATIONAL LAND FOR SALE IN TREUTLEN COUNTY, GA
Soperton, GA / Treutlen County

Locator Map



Satellite Map



DISCLAIMERS

Information in this brochure is provided solely for information purposes and does not constitute an offer to sell or advertise real estate outside the states in which broker or agent licensed. The information presented has been obtained from sources deemed to be reliable, but is not guaranteed or warranted by the agent, broker, or the sellers of these properties. This offering is subject to errors, omissions, prior sale, price change, correction or withdrawal from the market without notice. All references to age, square footage, income, expenses, acreage, carrying capacity, and land classification, etc. are approximate. Prospective buyers are chargeable with and expected to conduct their own independent investigation of the information and the property and to rely only on those results. Sellers reserve the right to accept or reject any and all offers without liability to any buyer or cooperating broker.

Maps are provided for illustration purposes only, the accuracy is not warranted. Parcels on interactive maps are not adjusted to match aerial backgrounds. This information is for reference purposes only and is not a legal document. Data maps contain errors. The seller and seller's agent are making known to all potential buyers that there may be variations between the location of the existing fence lines and the legal description of the deeded property. Seller and seller's agent make no warranties with regard to the location of the fence lines in relationship to the deeded property lines, nor does the Seller make any warranties or representations with regard to the specific acreage contained within the fenced property lines. Seller is selling the property in an "as is" condition, which includes the location of the fences as they exist. Boundaries shown on the accompanying maps are approximate, based on county parcel data. The maps are not to scale. The accuracy of the maps is not guaranteed. Prospective buyers are encouraged to verify fence lines, deeded property lines and acreages using a licensed surveyor at their own expense.

Mossy Oak Properties Coastal Land and Real Estate
309 Arnow Court
Saint Marys, GA 31558
(912) 674-2700
<https://mossyoakproperties.com/>

