



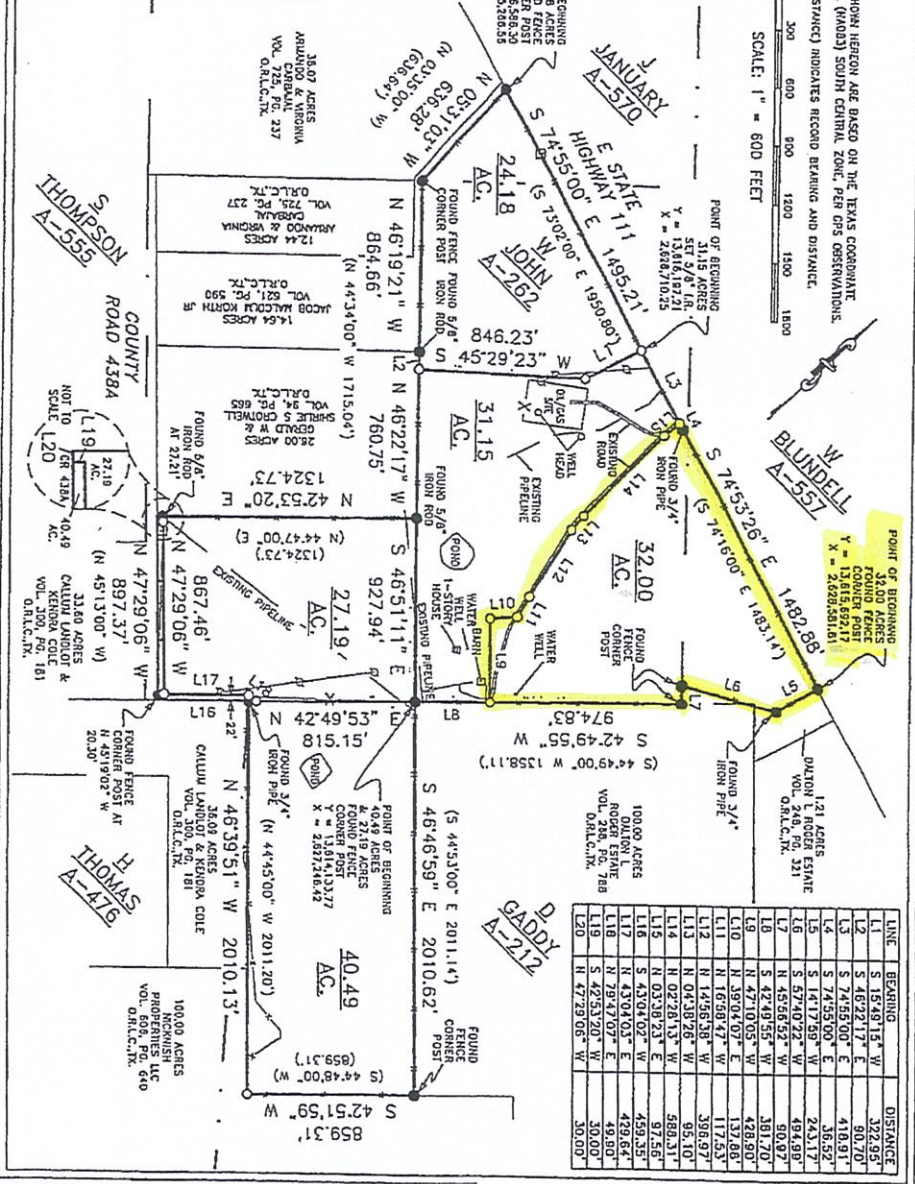
HEREBY STATE THAT THIS PLAN SHOWS THE SUBJECT (SECTION) AS SURVEYED ON THE GROUND BY ME OR BY AN ASSISTANT AND CORRECT TO THE BEST OF MY KNOWLEDGE.

COLE E. BARTON
REGISTERED PROFESSIONAL LAND SURVEYOR
LICENSE NO. 6488

LEGEND
 ○ OVERHEAD UTILITIES
 ○ POWER POLE
 ○ TELEPHONE PEDestal
 ○ SET 5/8" IRON ROD WITH CAP STAMPED THIS 6368

BARTON & ASSOCIATES
LAND SURVEYING
1111 WEST WASHINGTON, SUITE 1111, DALLAS, TEXAS 75201
755.02 ACRE DIVIDE
155.02 AC
Completion Date: 05/12/21
Scale: 1" = 600'
Drawn by: DJ
Checked by: AF/CB

NOTES:
 1. BEARINGS SHOWN HEREON ARE BASED ON THE TEXAS COORDINATE SYSTEM OF 1981, (NAD83) SOUTH CENTRAL ZONE, PER GPS OBSERVATIONS.
 2. (BEARING DISTANCE) INDICATES RECORD BEARING AND DISTANCE.
 SCALE: 1" = 600 FEET



LINE	BEARING	DISTANCE
L1	S 15° 0' 15" W	322.85
L2	S 46° 22' 17" E	60.70
L3	S 74° 55' 00" E	418.91
L4	S 74° 55' 00" E	36.52
L5	S 14° 17' 59" W	243.17
L6	S 57° 40' 22" W	494.90
L7	N 45° 56' 52" W	60.82
L8	S 42° 49' 55" W	361.70
L9	N 47° 10' 05" W	428.80
L10	N 39° 04' 07" E	137.86
L11	N 16° 50' 47" W	398.97
L12	N 14° 56' 58" W	95.10
L13	N 04° 38' 26" W	589.31
L14	N 02° 28' 13" E	97.56
L15	N 03° 38' 23" E	459.35
L16	S 43° 04' 02" E	479.64
L17	N 43° 04' 02" E	49.80
L18	N 79° 47' 09" E	30.00
L19	S 42° 53' 20" W	30.00
L20	N 47° 29' 06" W	30.00

JOB #: 2104025