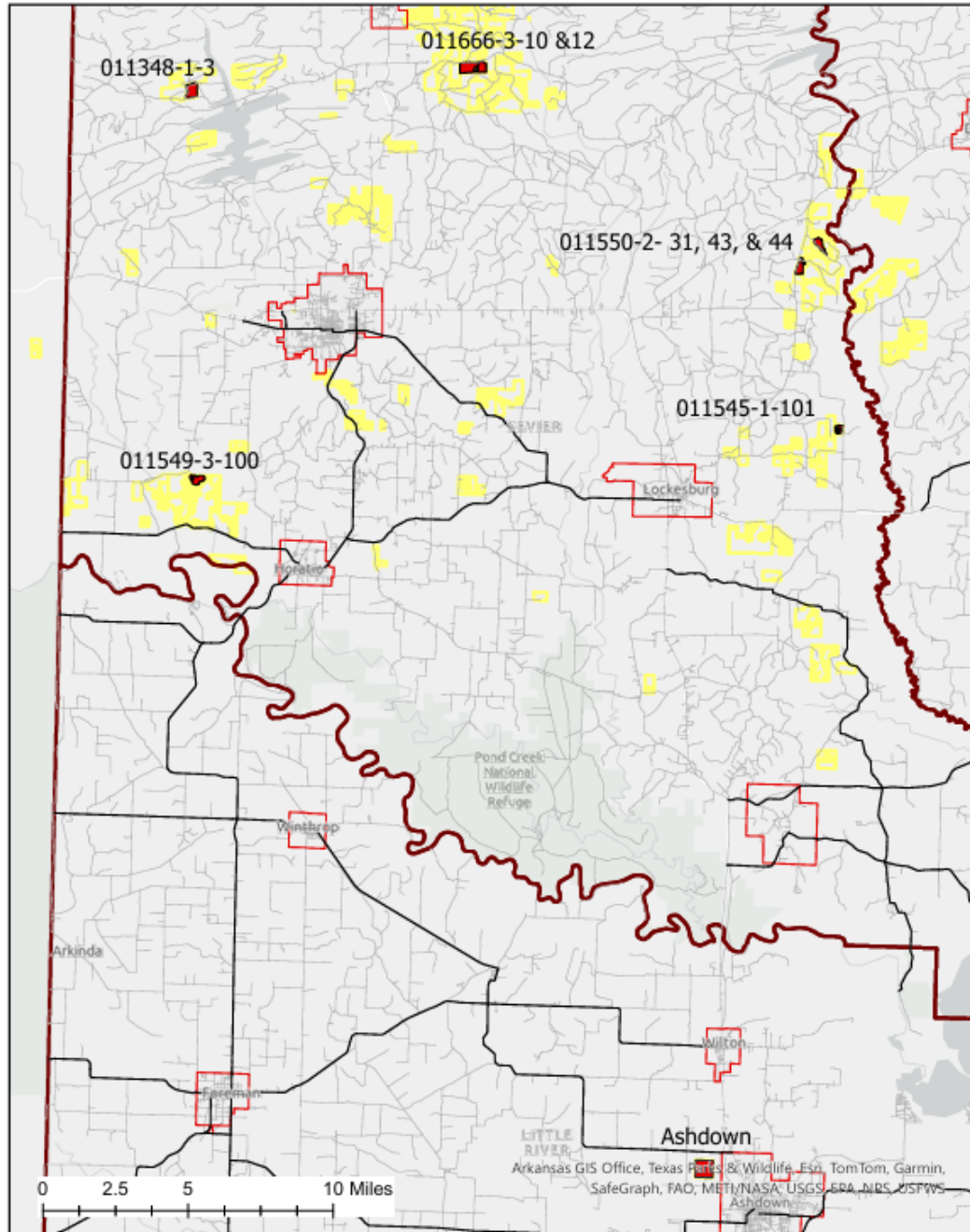




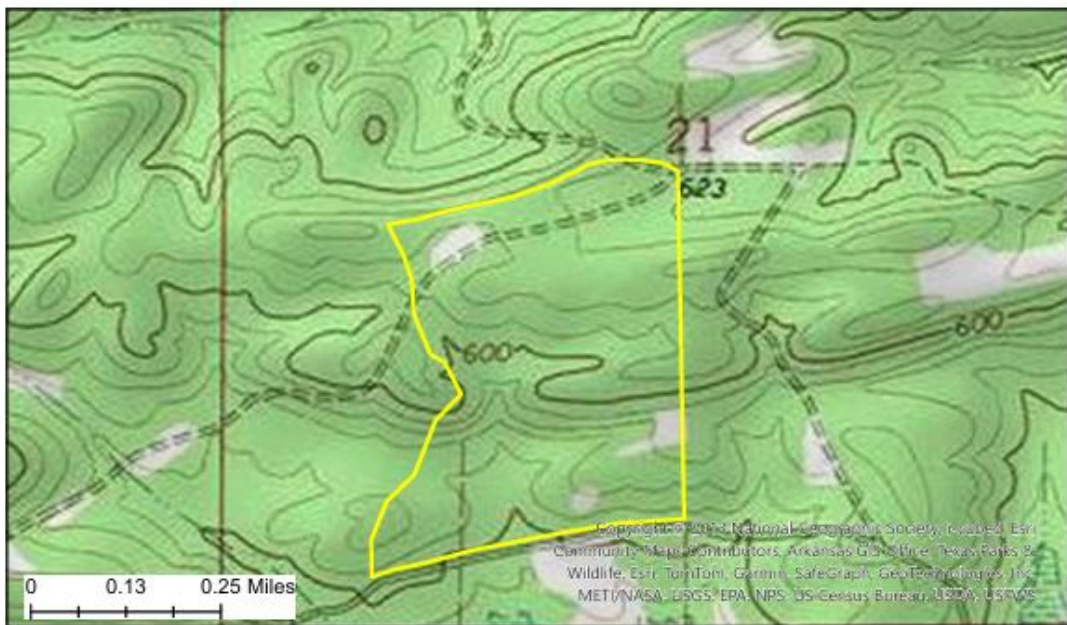
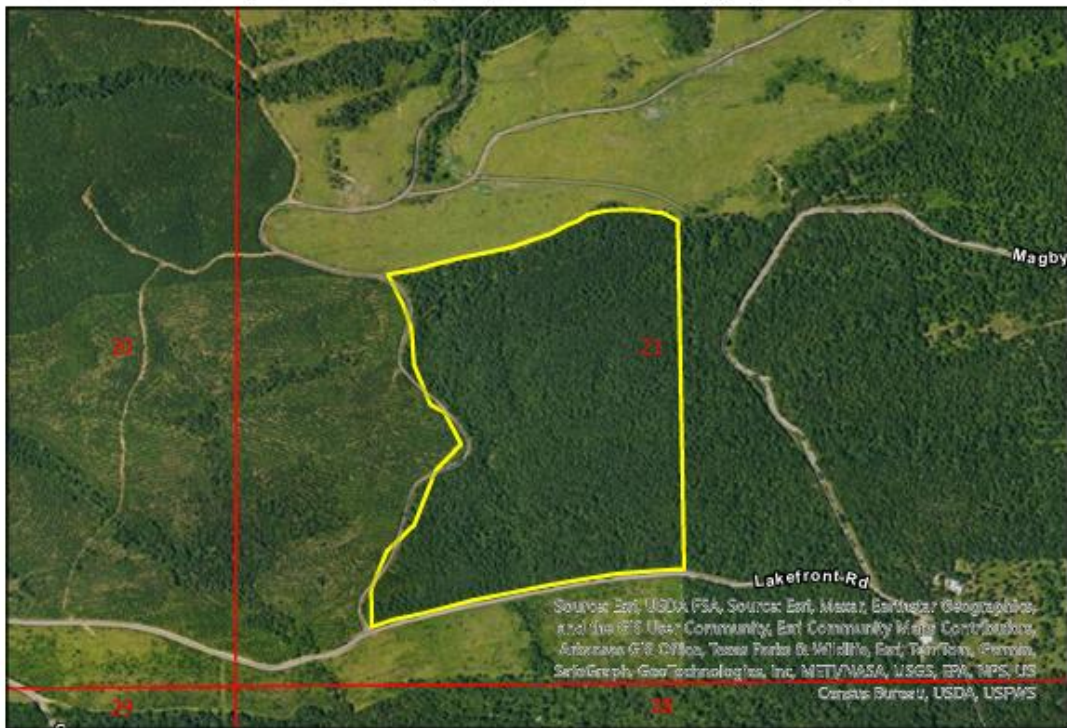
Location Map





011348-1-3

Part of SW ¼ Section 21, Township 7 South, Range 32 West, Sevier County, AR, 72 acres, more or less



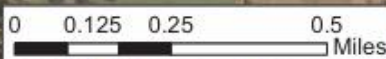
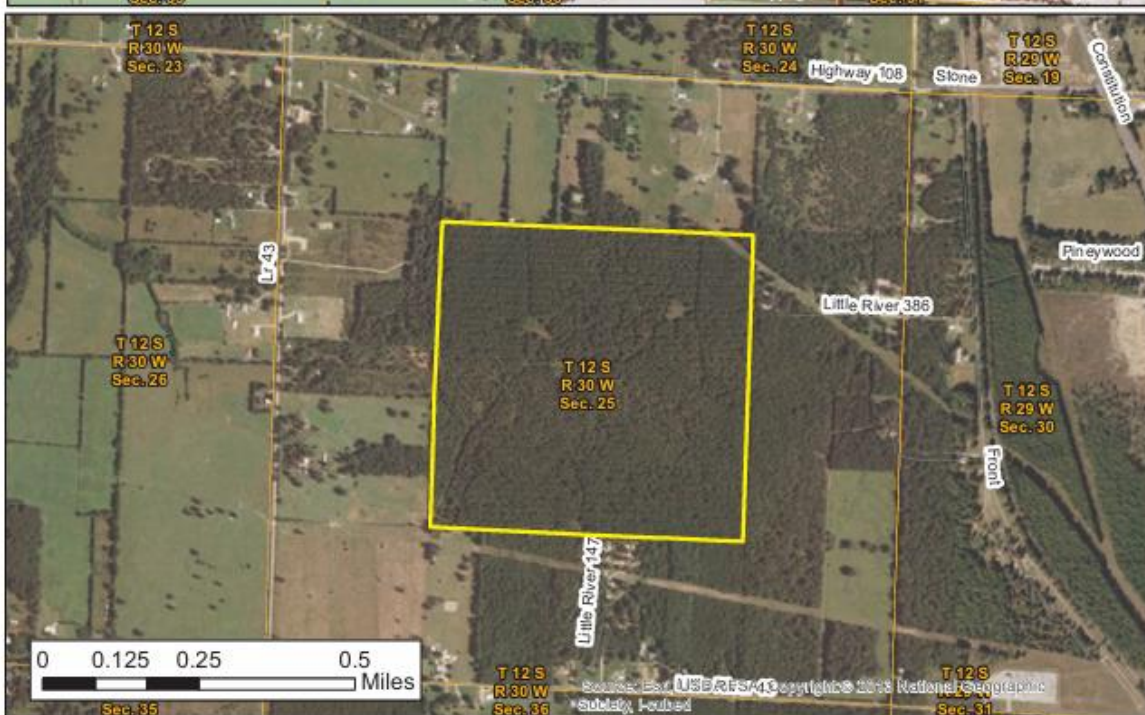

www.forestryrealestate.com



This map and all information it contains is provided "AS IS," as a courtesy to potential buyers. Potential buyers should make their own determination regarding the accuracy of the information provided. Neither the seller, DDK Forestry & Real Estate (DDK), their subsidiaries, affiliates nor representatives warrant the accuracy, adequacy or completeness of any information contained herein regarding the property, its condition, boundaries, access, acreage, or timber stand information. DDK expressly disclaims liability for errors or omissions.

JHHC Ashdown Thinning

SE ¼ NW ¼, SW ¼ NE ¼, NW ¼ SE ¼, NE ¼ SW ¼ Section 25, Township 12 South, Range 30 West, Little River County, AR 160 acres, more or less




 Phone: 1-888-695-8733
www.forestryrealestate.com



This map and all information it contains is provided "AS IS," as a courtesy to potential buyers. Potential buyers should make their own determination regarding the accuracy of the information provided. Neither the seller, DDK Forestry & Real Estate (DDK), their subsidiaries, affiliates nor representatives warrant the accuracy, adequacy or completeness of any information contained herein regarding the property, its condition, boundaries, access, acreage, or timber stand information. DDK expressly disclaims liability for errors or omissions.



01666-3-10 & 12

Part of S 1/2 SW 1/4 south of Ladd Bridge Rd, Part of SW 1/4 SE 1/4 south of Ladd Bridge Rd Section 14, part of N 1/2 NW 1/4, NW 1/4 NE 1/4 Section 23, Sevier County, AR 129 acres, more or less




www.forestryrealestate.com

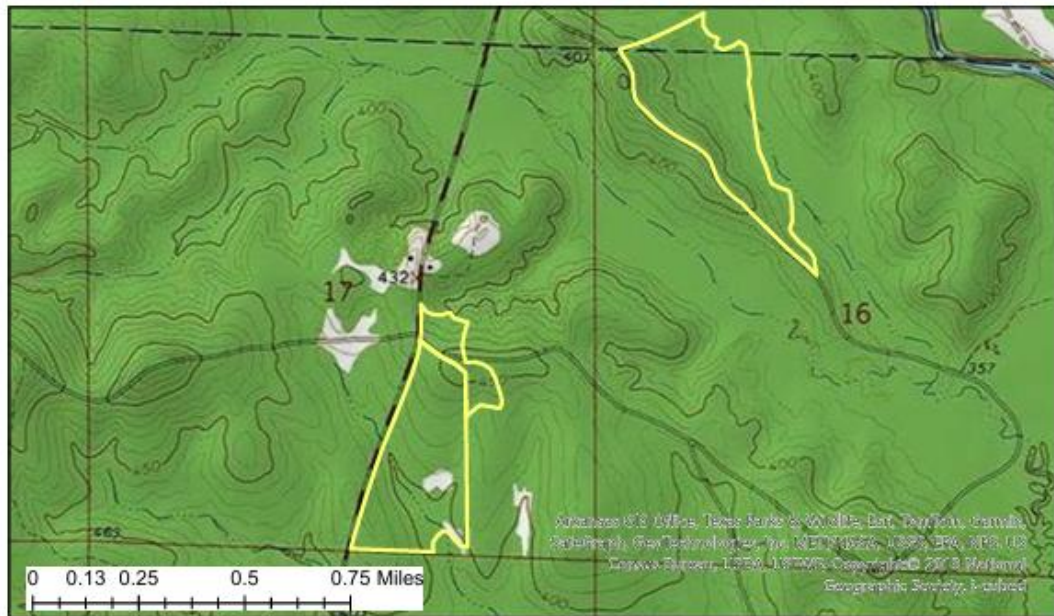
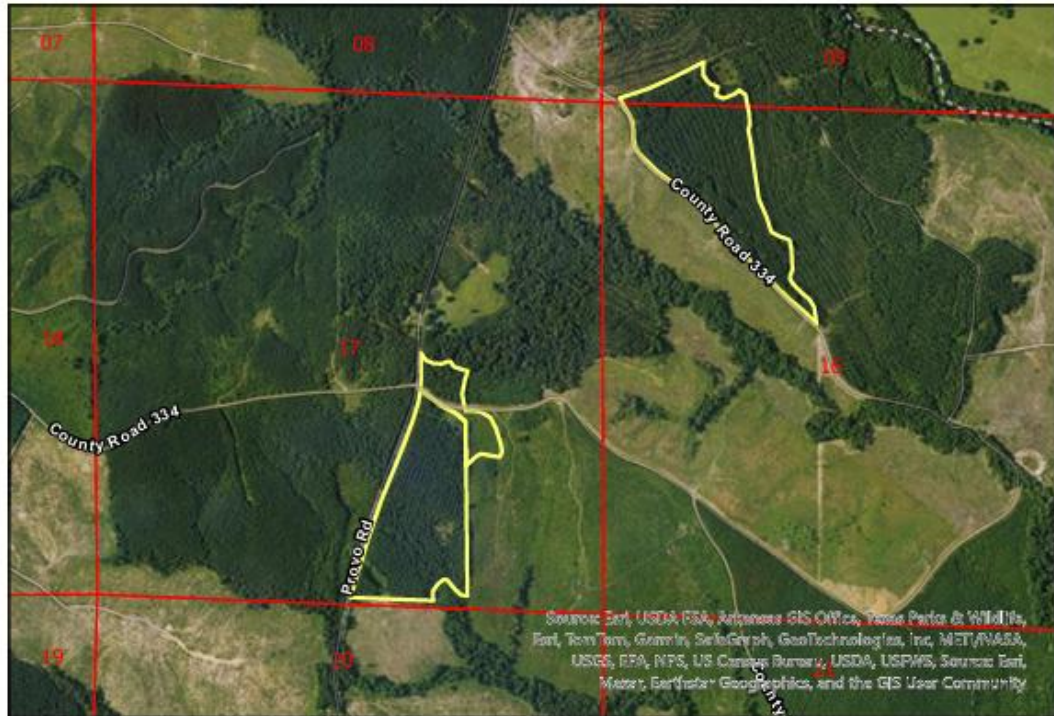


This map and all information it contains is provided "AS IS," as a courtesy to potential buyers. Potential buyers should make their own determination regarding the accuracy of the information provided. Neither the seller, DDK Forestry & Real Estate (DDK), their subsidiaries, affiliates nor representatives warrant the accuracy, adequacy or completeness of any information contained herein regarding the property, its condition, boundaries, access, acreage, or timber stand information. DDK expressly disclaims liability for errors or omissions.



011550-2-31, 43, & 44

Part of Sections 16 & 17, Township 8 South, Range 29 West, Sevier County, AR, 88 acres, more or less




www.forestryrealestate.com

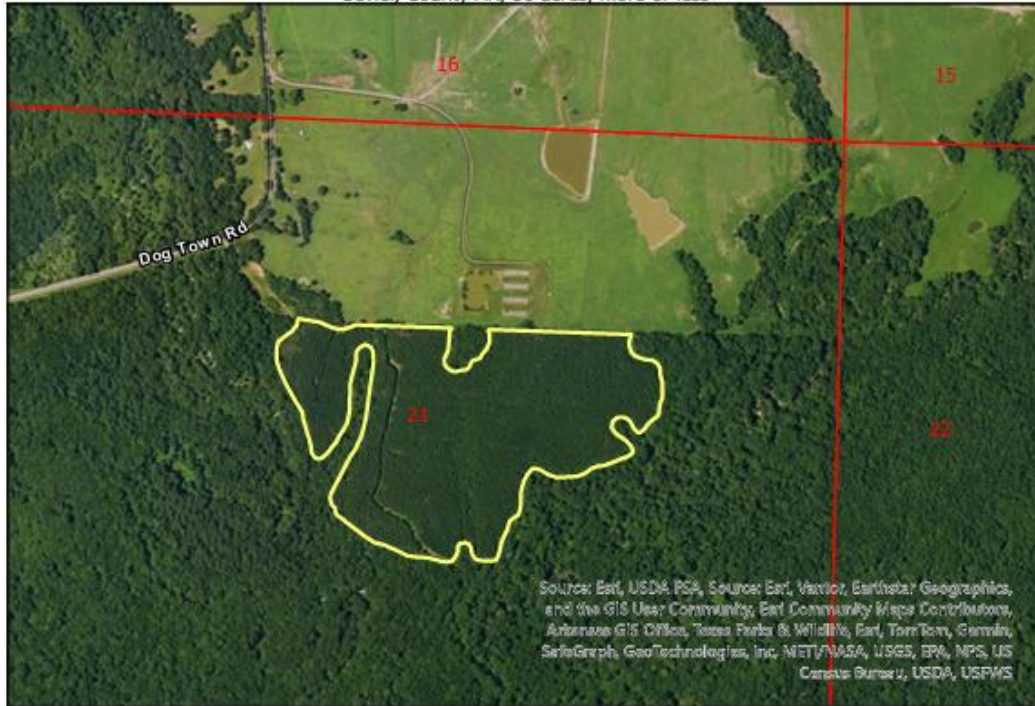


This map and all information it contains is provided "AS IS," as a courtesy to potential buyers. Potential buyers should make their own determination regarding the accuracy of the information provided. Neither the seller, DDK Forestry & Real Estate (DDK), their subsidiaries, affiliates nor representatives warrant the accuracy, adequacy or completeness of any information contained herein regarding the property, its condition, boundaries, access, acreage, or timber stand information. DDK expressly disclaims liability for errors or omissions.



011549-3-100

Part of S ½ NE ¼, Part of SE ¼ NW ¼ Section 21, Township 9 South, Range 32 West, Sevier, County AR, 50 acres, more or less



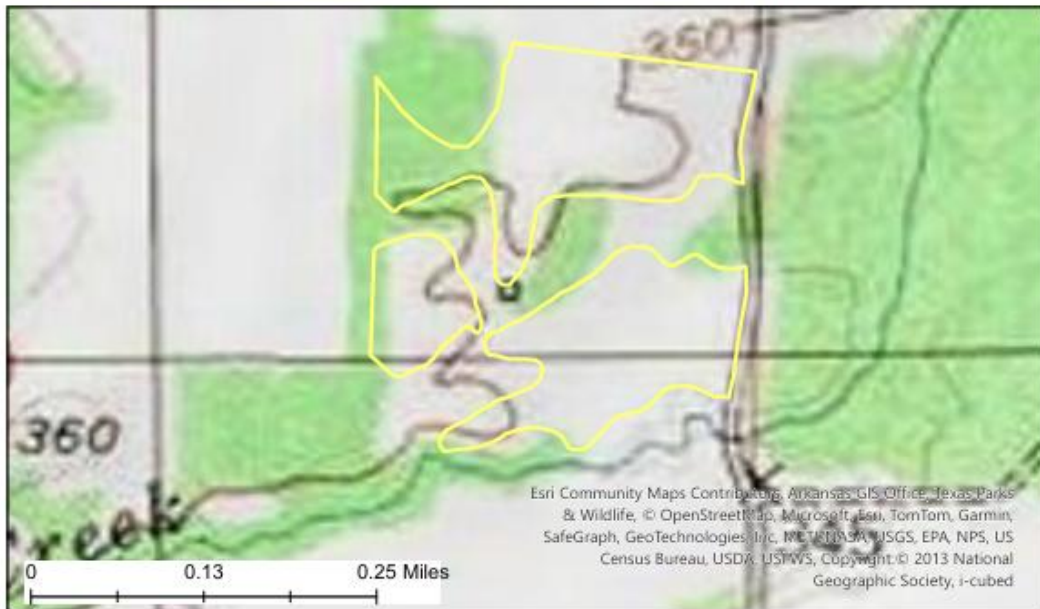

www.forestryrealestate.com



This map and all information it contains is provided "AS IS," as a courtesy to potential buyers. Potential buyers should make their own determination regarding the accuracy of the information provided. Neither the seller, DDK Forestry & Real Estate (DDK), their subsidiaries, affiliates nor representatives warrant the accuracy, adequacy or completeness of any information contained herein regarding the property, its condition, boundaries, access, acreage, or timber stand information. DDK expressly disclaims liability for errors or omissions.



011545-1-101
 Part of SE ¼ NE ¼, Section 9 Township 9
 South, Range 29 West, Sevier Co., AR, 20 Acres +/-




www.forestryrealestate.com



This map and all information it contains is provided "AS IS," as a courtesy to potential buyers. Potential buyers should make their own determination regarding the accuracy of the information provided. Neither the seller, DDK Forestry & Real Estate (DDK), their subsidiaries, affiliates nor representatives warrant the accuracy, adequacy or completeness of any information contained herein regarding the property, its condition, boundaries, access, acreage, or timber stand information. DDK expressly disclaims liability for errors or omissions.