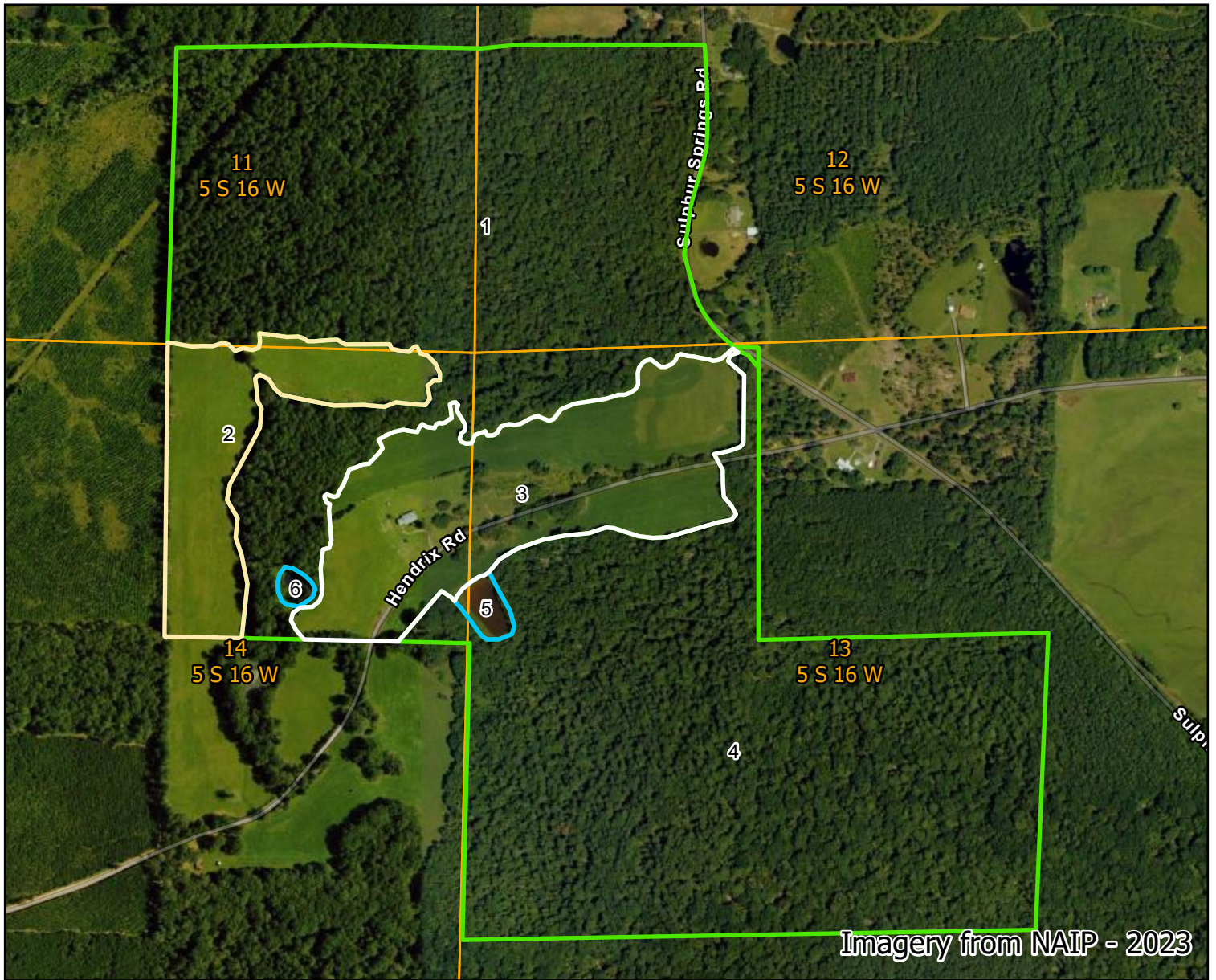


Hendrix Farm - Stand Map

SE ¼ of the SE ¼ in Section 11, part of the SW ¼ SW ¼ lying west of Sulphur Springs Road in Section 12, the S ½ NW ¼, the NW ¼ NW ¼ in Section 13, the NE ¼ of the NE ¼ in Section 14, Township 5 South, Range 16 West in Hot Spring County, AR 232 acres +/-



Imagery from NAIP - 2023

Legend

PLSS Sections

Stand Number



Stand Number	Acres	Cover Type
1	91	Native Pine Hardwood
2	15	Pasture
3	30	Pasture/House
4	94	Native Pine Hardwood
5	1	Pond
6	0	Pond



Phone: 1-501-291-8600
www.forestryrealestate.com

DDK
 FORESTRY & REAL ESTATE

This map and all information it contains is provided "AS IS," as a courtesy to potential buyers. Potential buyers should make their own determination regarding the accuracy of the information provided. Neither the seller, Davis DuBose Knight Forestry & Real Estate LLC (DDK), their subsidiaries, affiliates nor representatives warrant the accuracy, adequacy or completeness of any information contained herein regarding the property, its condition, boundaries, access, acreage, or timber stand information. DDKFRE expressly disclaims liability for errors or omissions.