



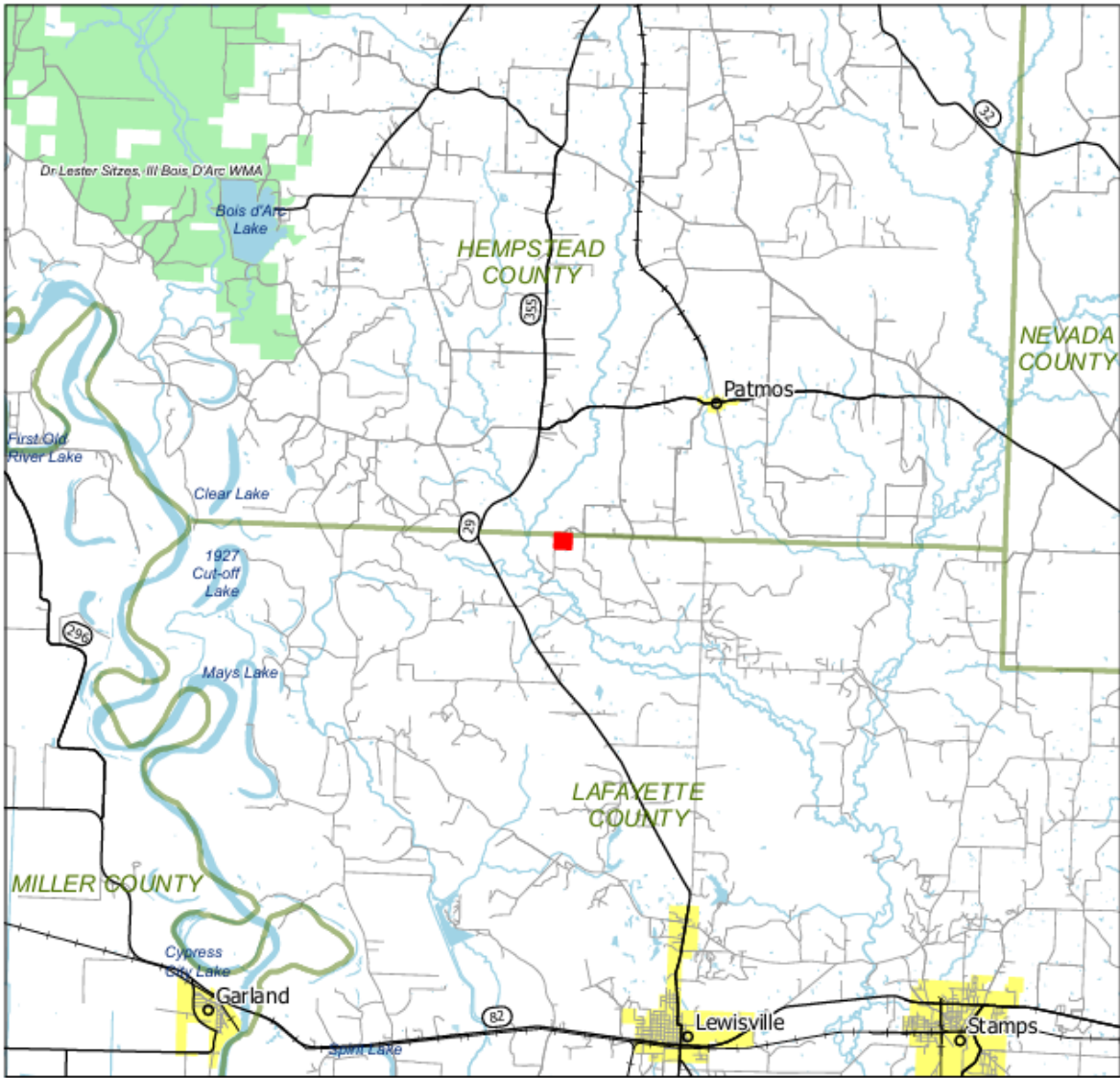
**Association  
of Consulting  
Foresters**

THE GOLD STANDARD OF  
FORESTRY CONSULTANTS



## Patmos 40 - Location Map

Approximately 40 acres +/-



### Legend

- Property Boundary
- County Boundary
- City Limits
- Secondary Roads
- Local Roads
- Railroads
- Wildlife Management Areas



N

Phone: 1-501-291-8600  
[www.forestryrealestate.com](http://www.forestryrealestate.com)

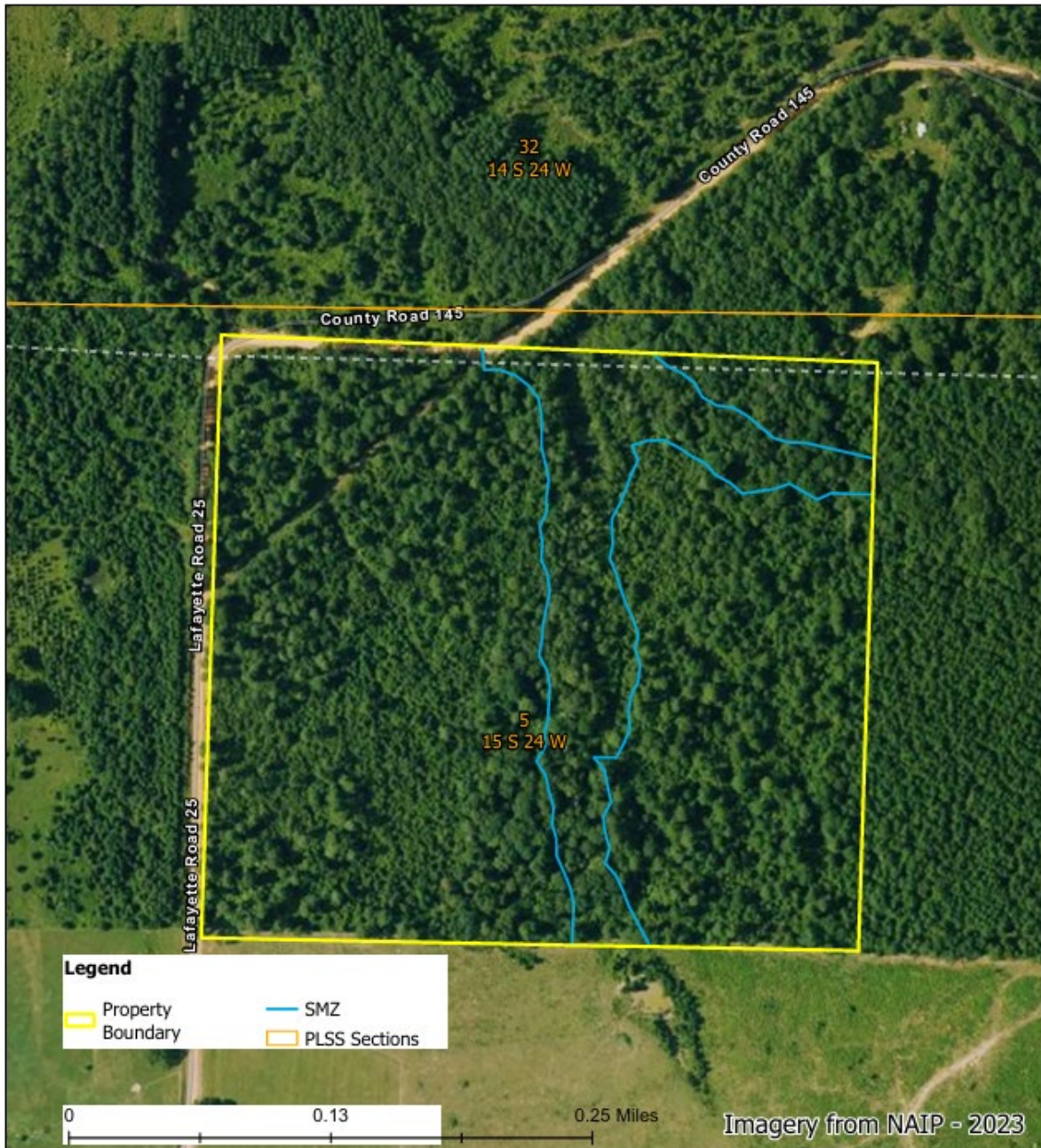


This map and all information it contains is provided "AS IS," as a courtesy to potential buyers. Potential buyers should make their own determination regarding the accuracy of the information provided. Neither the seller, Davis DuBoise Knight Forestry & Real Estate LLC (DDK), their subsidiaries, affiliates nor representatives warrant the accuracy, adequacy or completeness of any information contained herein regarding the property, its condition, boundaries, access, acreage, or timber stand information. DDKFRE expressly disclaims liability for errors or omissions.



## Patmos 40 - Aerial Map

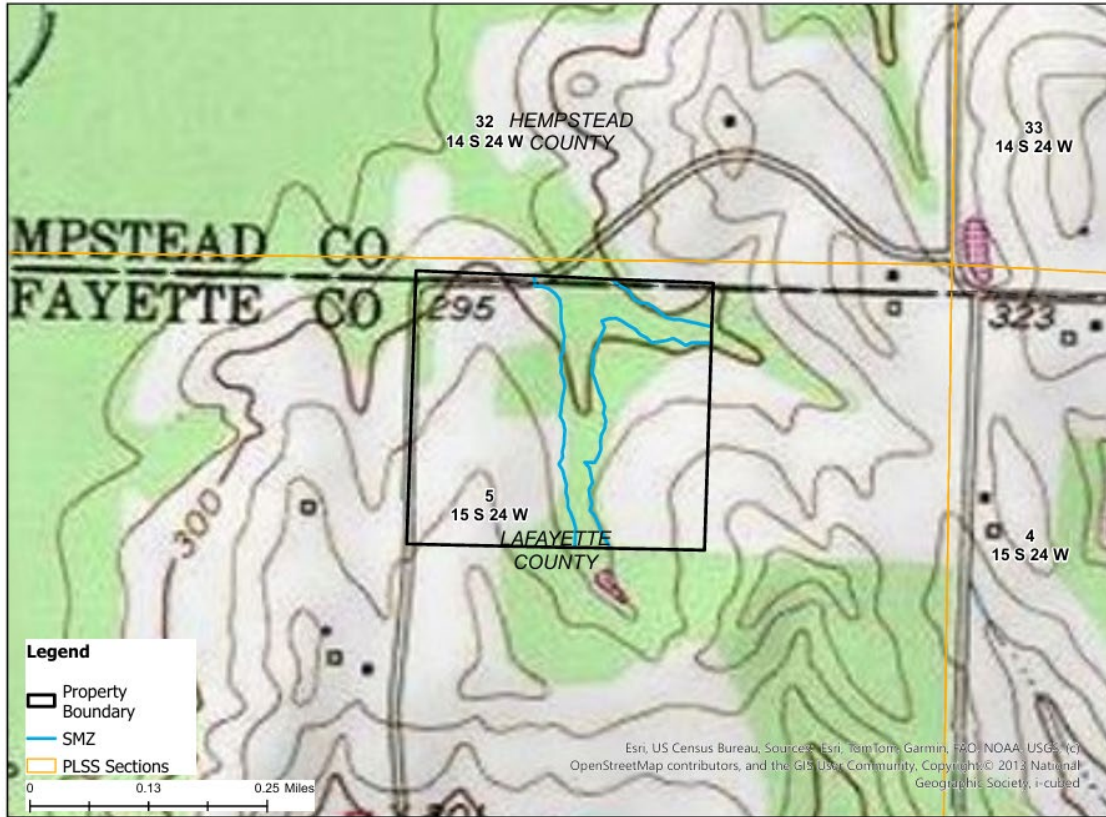
NW ¼ NE ¼, Section 5, Township 15 South, Range 24 West, Lafayette County,  
AR, 40 acres +/-





### Patmos 40 - Topo Map

NW ¼ NE ¼, Section 5, Township 15 South, Range 24 West, Lafayette County, AR, 40 acres +/-



Esri, US Census Bureau, Source: Esri, TomTom, Garmin, F&O, NOAA, USGS, (c) OpenStreetMap contributors, and the GIS User Community, Copyright © 2013 National Geographic Society, i-cubed

This map and all information it contains is provided "AS IS," as a courtesy to potential buyers. Potential buyers should make their own determination regarding the accuracy of the information provided. Neither the seller, DDK Forestry & Real Estate (DDK), their subsidiaries, affiliates nor representatives warrant the accuracy, adequacy or completeness of any information contained herein regarding the property, its condition, boundaries, access, acreage, or timber stand information. DDK expressly disclaims liability for errors or omissions.

www.forestryrealestate.com

