

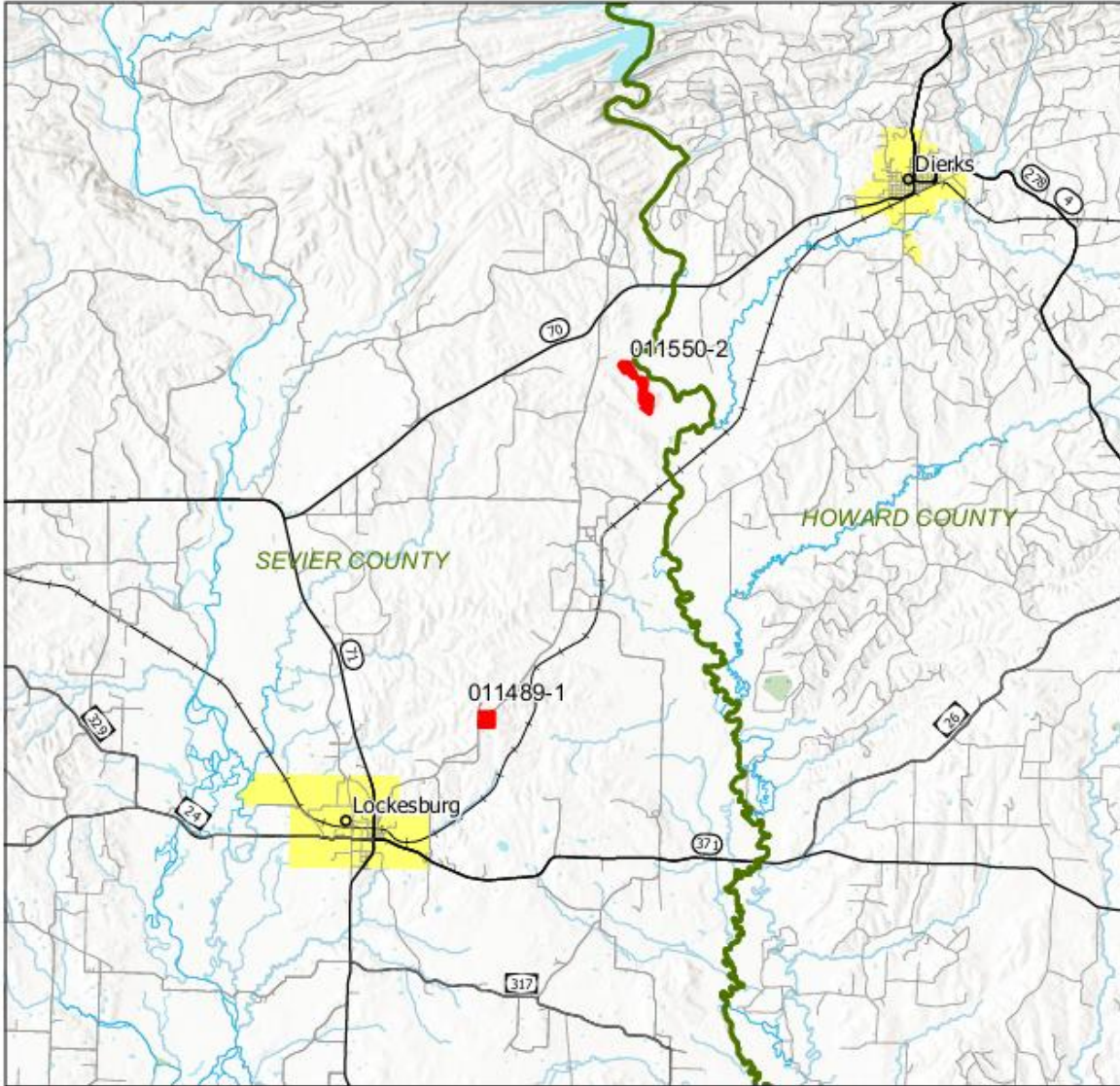


**Association
of Consulting
Foresters**
THE GOLD STANDARD OF
FORESTRY CONSULTANTS



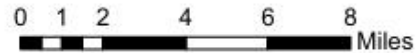
Timber Sale - Location Map

Tracts 011489-1 & 011550-2 in Sevier County, AR



Legend

- Stand Boundary
- City Limits
- AR Counties
- AR State Highways
- Railroads
- Stream/River
- Lake/Reservoir



N
↑

Phone: 1-501-291-8600
www.forestryrealestate.com



This map and all information it contains is provided "AS IS," as a courtesy to potential buyers. Potential buyers should make their own determination regarding the accuracy of the information provided. Neither the seller, Davis Dulboe Knight Forestry & Real Estate LLC (DDK), their subsidiaries, affiliates nor representatives warrant the accuracy, adequacy or completeness of any information contained herein regarding the property, its condition, boundaries, access, acreage, or timber stand information. DDK/FRE expressly disclaims liability for errors or omissions.

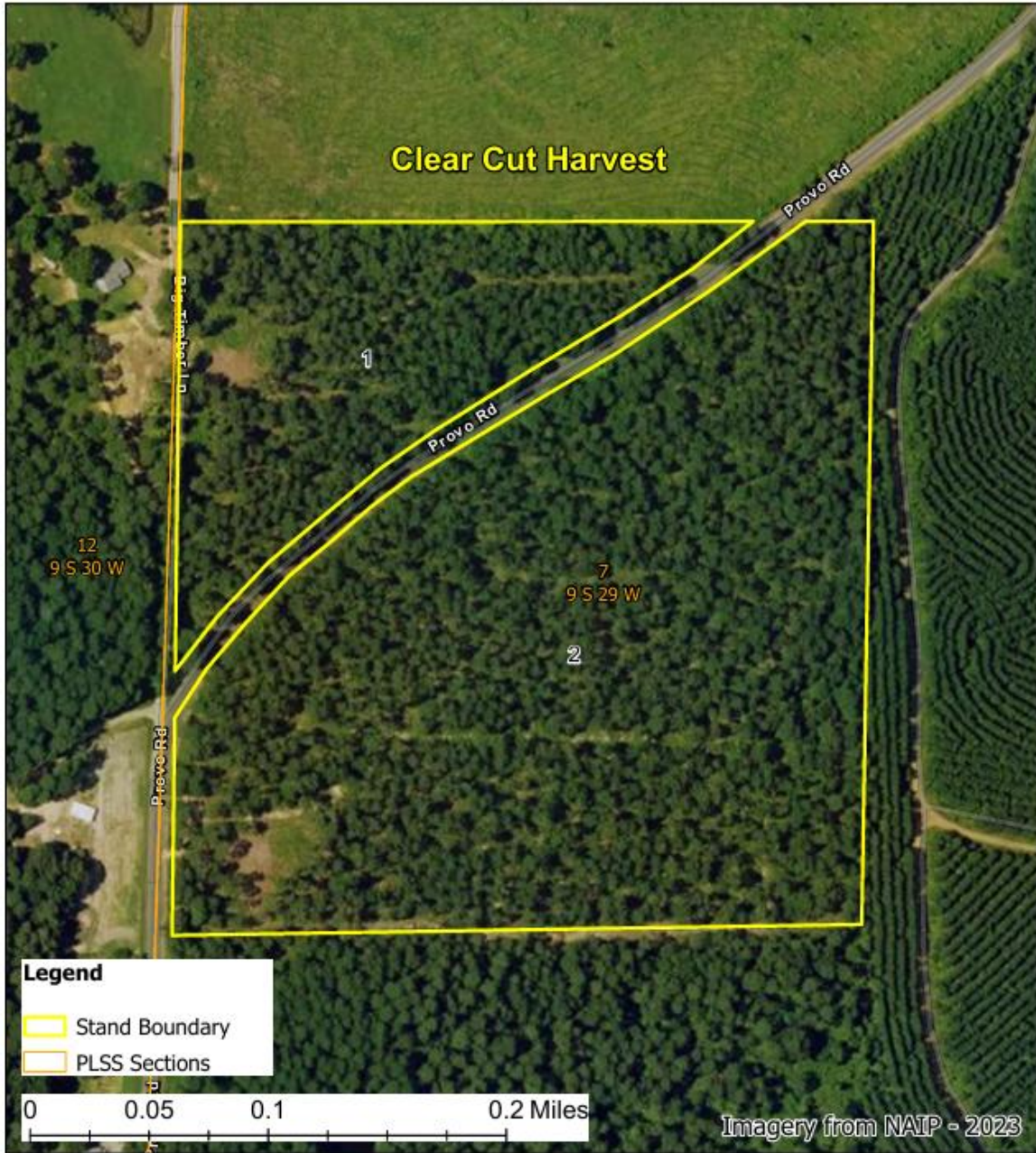


**Association
of Consulting
Foresters**
THE GOLD STANDARD OF
FORESTRY CONSULTANTS



Tract #001489-1 - Stand 1 & 2 - Aerial Map

NW ¼ SW ¼, Section 7, Township 9 South, Range 29 West, Sevier County, AR,
36 acres +/-




www.forestryrealestate.com



This map and all information it contains is provided "AS IS," as a courtesy to potential buyers. Potential buyers should make their own determination regarding the accuracy of the information provided. Neither the seller, DDK Forestry & Real Estate (DDK), their subsidiaries, affiliates nor representatives warrant the accuracy, adequacy or completeness of any information contained herein regarding the property, its condition, boundaries, access, acreage, or timber stand information. DDK expressly disclaims liability for errors or omissions.

Map Created: 05/04/26

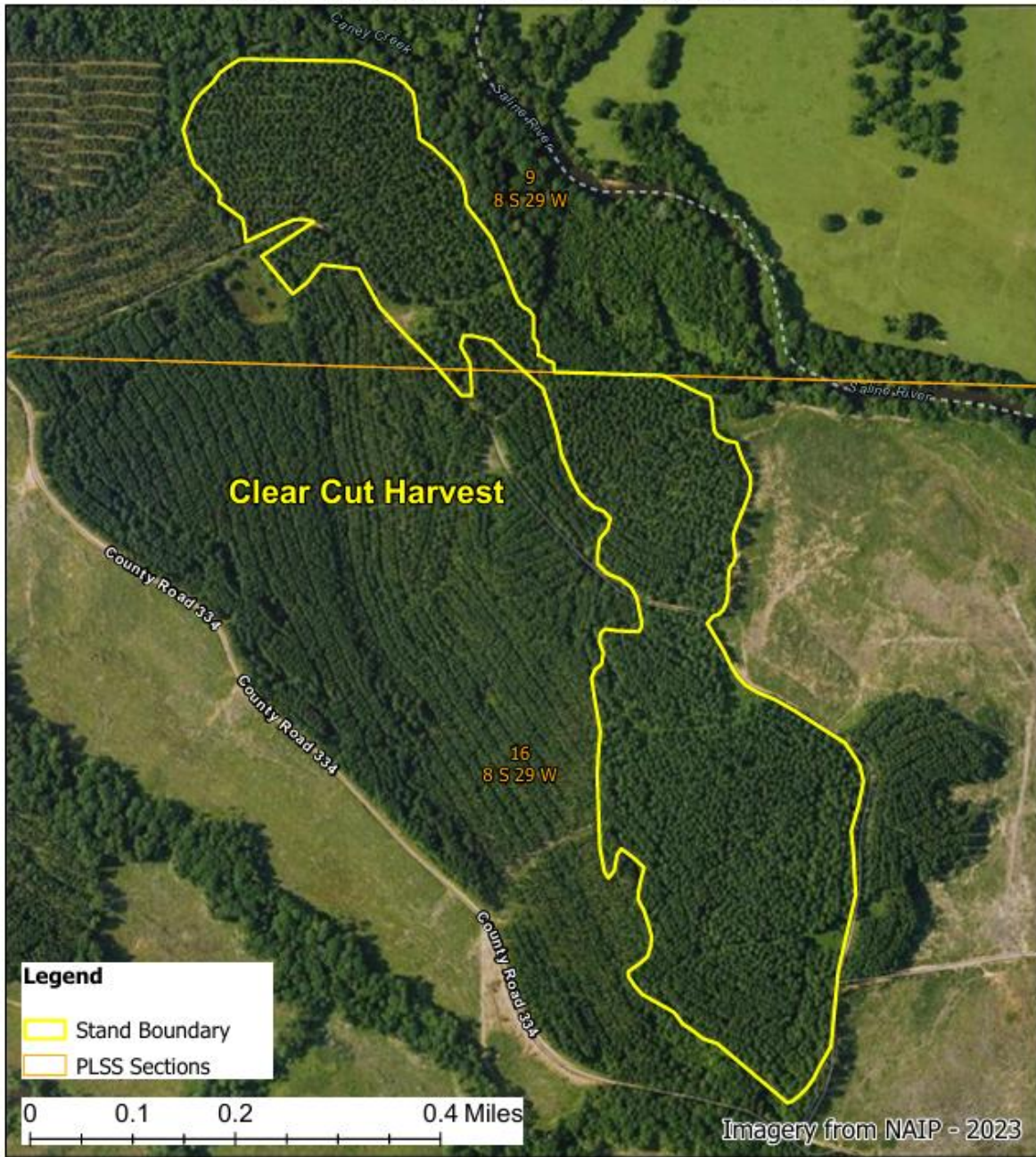


**Association
of Consulting
Foresters**
THE GOLD STANDARD OF
FORESTRY CONSULTANTS



Tract #011550-2 - Stand #27 - Aerial Map

Part of S 1/2 SW 1/4, Section 9, Township 8 South, Range 29 West & Part of N 1/2, Section 16,
Township 8 South, Range 29 West, Sevier County, AR, 76 acres +/-



N
www.forestryrealestate.com



This map and all information it contains is provided "AS IS," as a courtesy to potential buyers. Potential buyers should make their own determination regarding the accuracy of the information provided. Neither the seller, DDK Forestry & Real Estate (DDK), their subsidiaries, affiliates nor representatives warrant the accuracy, adequacy or completeness of any information contained herein regarding the property, its condition, boundaries, access, acreage, or timber stand information. DDK expressly disclaims liability for errors or omissions.

Map Created: 05/04/26