

Highway 79 South
Highway 79
Pine Bluff, AR 71603

\$65,600
16.800± Acres
Jefferson County



Highway 79 South Pine Bluff, AR / Jefferson County

SUMMARY

Address

Highway 79

City, State Zip

Pine Bluff, AR 71603

County

Jefferson County

Type

Hunting Land, Recreational Land, Timberland

Latitude / Longitude

34.100943 / -92.148136

Acreage

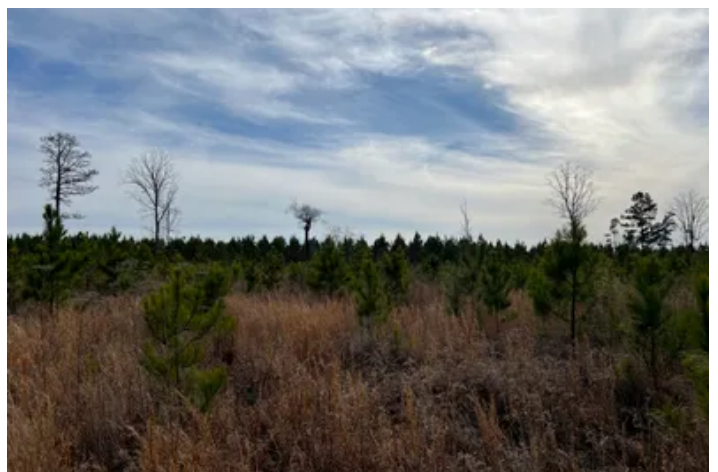
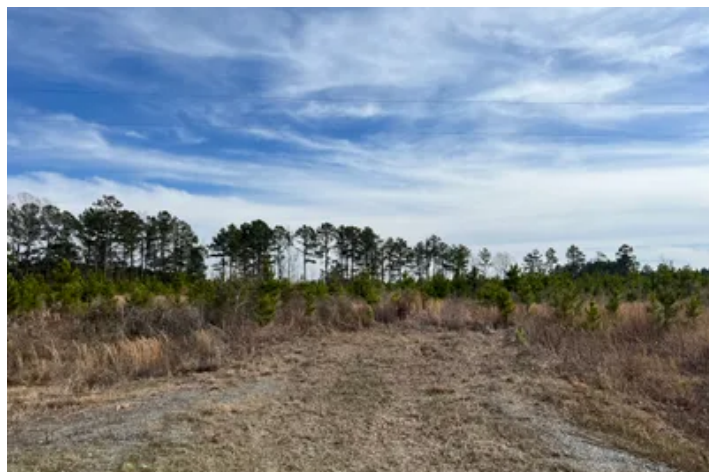
16.800

Price

\$65,600

Property Website

<https://www.forestryrealestate.com/property/highway-79-south-jefferson-arkansas/61432/>



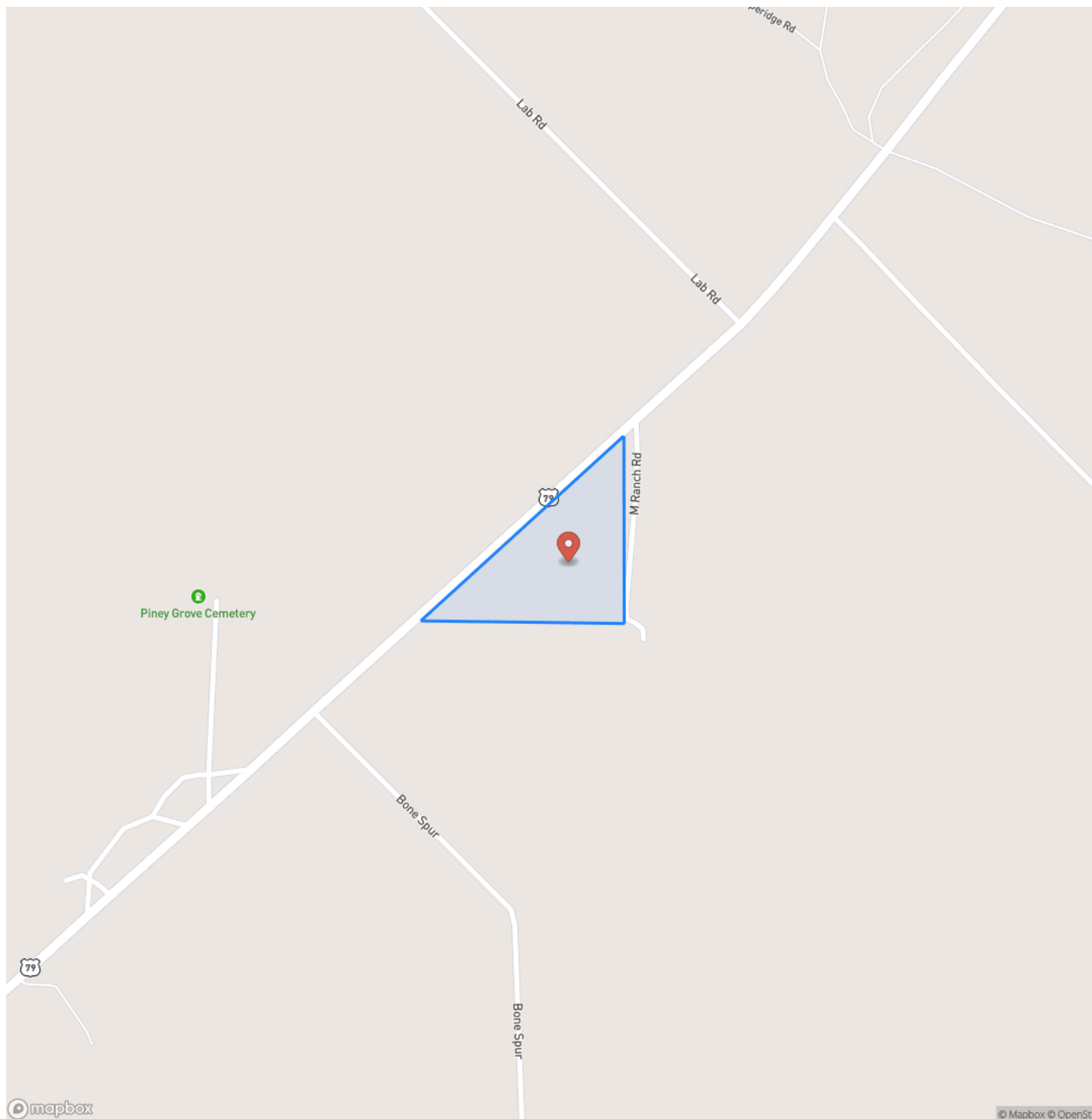
PROPERTY DESCRIPTION

This 16.8-acre property, located on the south side of Highway 79, offers an excellent opportunity for those looking to invest in timberland or seeking a place to get away. The tract was planted with pine in 2020, providing a young and promising timber resource for future harvest. Conveniently situated just 10 miles from Pine Bluff, this property combines the quietness of country living with the accessibility to town amenities. The south side of the property is equipped with essential utilities, including water in the area, making it an attractive option for future development or simply enjoying a more convenient outdoor experience. Whether you're looking to expand your land portfolio or find a spot to build your dream home, this property offers potential in a prime location.

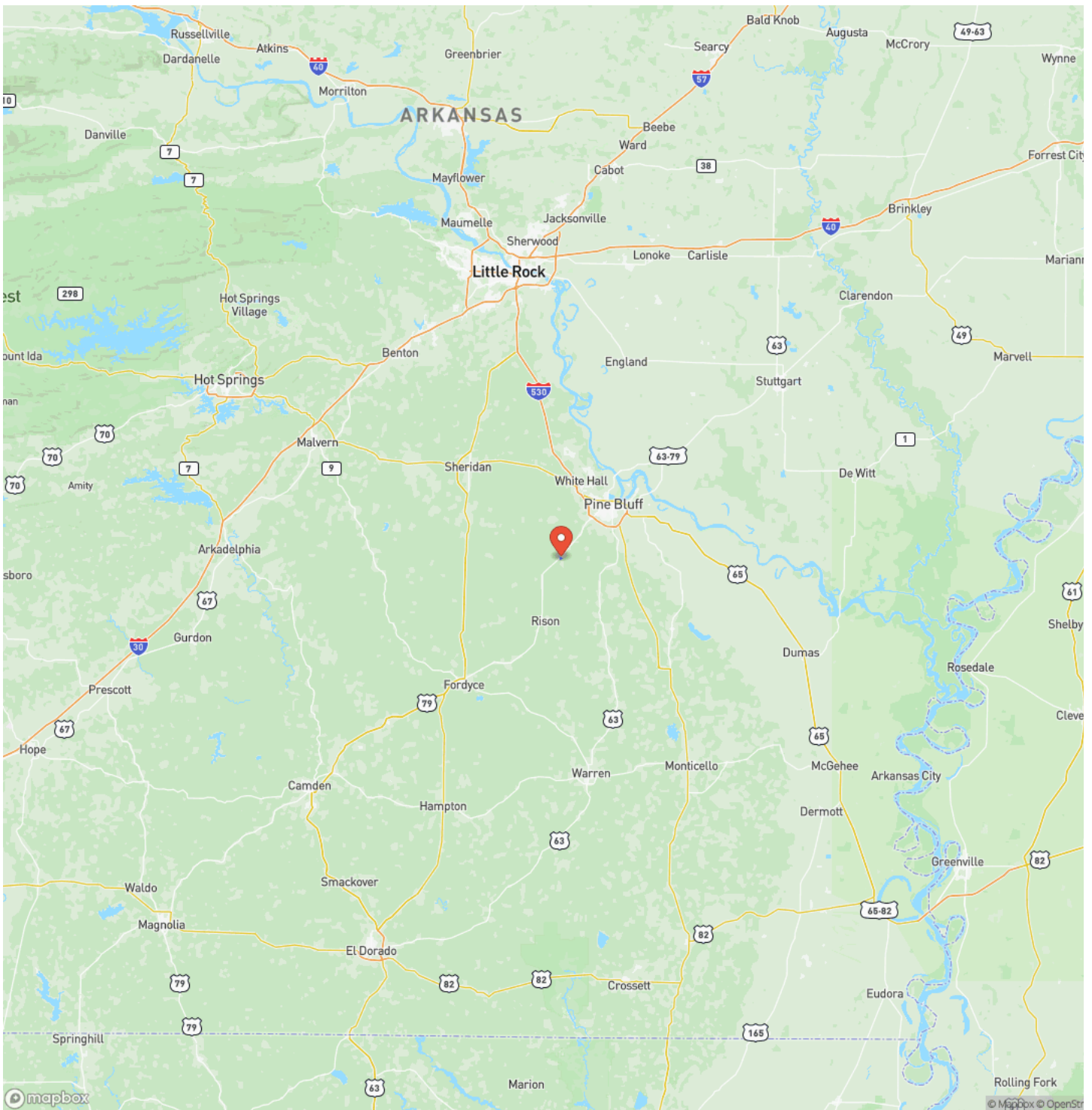
SELLER IS RETAINING MINERAL RIGHTS.



Locator Map



Locator Map



Satellite Map



Highway 79 South
Pine Bluff, AR / Jefferson County

LISTING REPRESENTATIVE

For more information contact:



Representative

Mark Knight

Mobile

(501) 231-8778

Office

(501) 219-8600

Email

mknight@davisforestry.com

Address

1100 Asbury Rd.

City / State / Zip

NOTES

This image shows a blank sheet of white paper with horizontal ruling lines. The lines are evenly spaced and run across the width of the page. There are no margins, text, or other markings on the paper.

[illegible]

MORE INFO ONLINE:
www.forestryrealestate.com

DISCLAIMERS

Information in this brochure is provided solely for information purposes and does not constitute an offer to sell or advertise real estate outside the states in which broker or agent licensed. The information presented has been obtained from sources deemed to be reliable, but is not guaranteed or warranted by the agent, broker, or the sellers of these properties. This offering is subject to errors, omissions, prior sale, price change, correction or withdrawal from the market without notice. All references to age, square footage, income, expenses, acreage, carrying capacity, and land classification, etc. are approximate. Prospective buyers are chargeable with and expected to conduct their own independent investigation of the information and the property and to rely only on those results. Sellers reserve the right to accept or reject any and all offers without liability to any buyer or cooperating broker.

Maps are provided for illustration purposes only, the accuracy is not warranted. Parcels on interactive maps are not adjusted to match aerial backgrounds. This information is for reference purposes only and is not a legal document. Data maps contain errors. The seller and seller's agent are making known to all potential buyers that there may be variations between the location of the existing fence lines and the legal description of the deeded property. Seller and seller's agent make no warranties with regard to the location of the fence lines in relationship to the deeded property lines, nor does the Seller make any warranties or representations with regard to the specific acreage contained within the fenced property lines. Seller is selling the property in an "as is" condition, which includes the location of the fences as they exist. Boundaries shown on the accompanying maps are approximate, based on county parcel data. The maps are not to scale. The accuracy of the maps is not guaranteed. Prospective buyers are encouraged to verify fence lines, deeded property lines and acreages using a licensed surveyor at their own expense.



Davis DuBose Knight Forestry & Real Estate
1100 Asbury Rd.
Little Rock, AR 72211
(501) 219-8600
www.forestryrealestate.com

