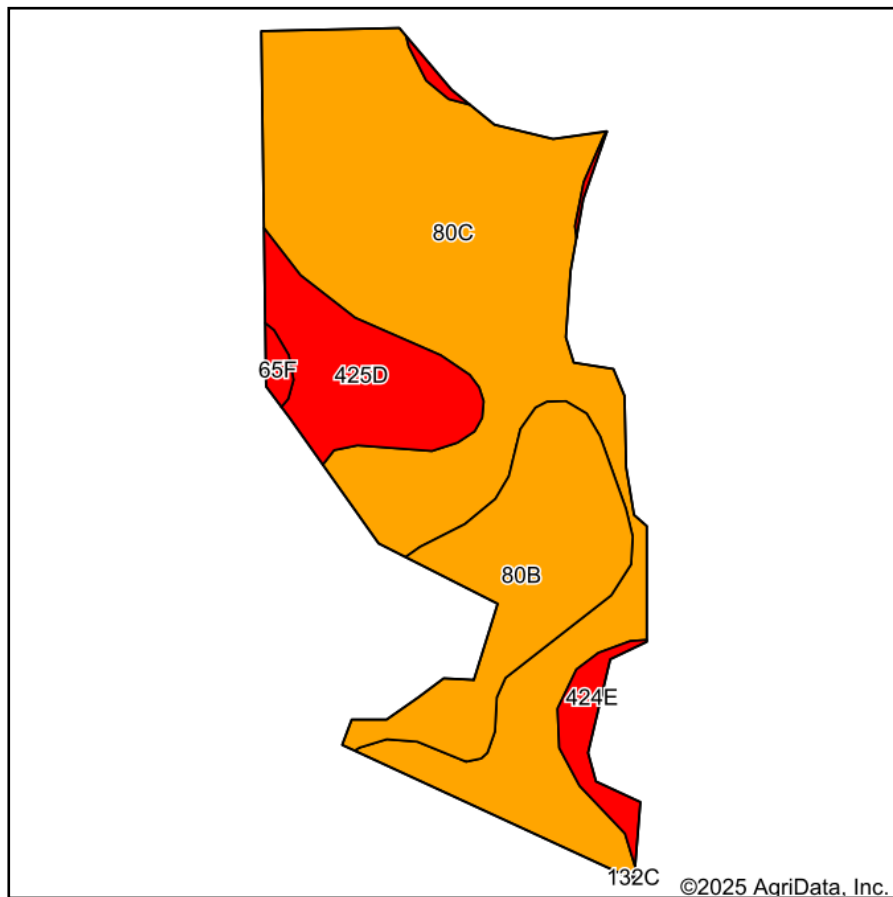
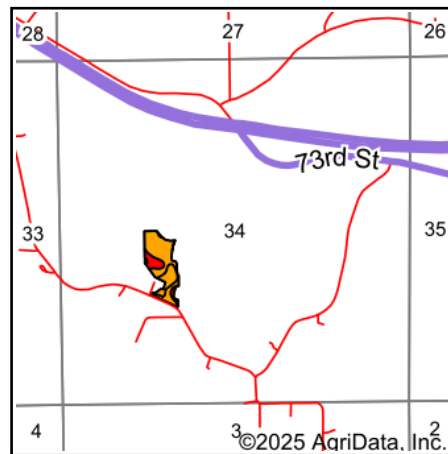


# Soils Map



Soils data provided by USDA and NRCS.



State: **Iowa**  
 County: **Wapello**  
 Location: **34-72N-13W**  
 Township: **Agency**  
 Acres: **8.54**  
 Date: **7/24/2025**



Area Symbol: IA179, Soil Area Version: 33

Code	Soil Description	Acres	Percent of field	CSR2 Legend	Restrictive Layer	Soil Drainage	Non-Irr Class *c	*i Corn Bu	*i Alfalfa Tons	*i Soybeans Bu	*i Bluegrass Tons	*i Tall Grasses Tons	*i Water-Holding Inch	CSR2**	CSR	*n NCC Over
80C	Clinton silt loam, 5 to 9 percent slopes	5.49	64.2%		> 6.5ft.	Moderately well drained	IIIe	192.0	5.4	55.7	3.5	5.8	11.5	72	65	
80B	Clinton silt loam, 2 to 5 percent slopes	1.64	19.2%		> 6.5ft.	Moderately well drained	IIe	208.0	5.8	60.3	3.7	6.2	11.5	80	80	
425D	Keswick loam, 9 to 14 percent slopes	1.04	12.2%		1.5ft. (Abrupt textural change)	Somewhat poorly drained	IVe	88.0	2.5	25.5	1.6	2.6	8.8	8	10	
424E	Lindley-Keswick loams, 14 to 18 percent slopes	0.27	3.2%		1.5ft. (Abrupt textural change)	Well drained	VIe	113.6	3.2	32.9	2.0	3.4	9.0	24	10	
65F	Lindley loam, 18 to 25 percent slopes	0.10	1.2%		> 6.5ft.	Well drained	VIIe	115.2	3.2	33.4	2.1	3.5	9.4	17	10	
Weighted Average							3.07	179	5	51.9	3.2	5.4	11.1	63.6	58.8	*n

\*\*IA has updated the CSR values for each county to CSR2.

\*i Yield data provided by the ISPAID Database version 8.1.1 developed by IA State University.

\*n: The aggregation method is "Weighted Average using all components"

\*c: Using Capabilities Class Dominant Condition Aggregation Method

Soils data provided by USDA and NRCS.