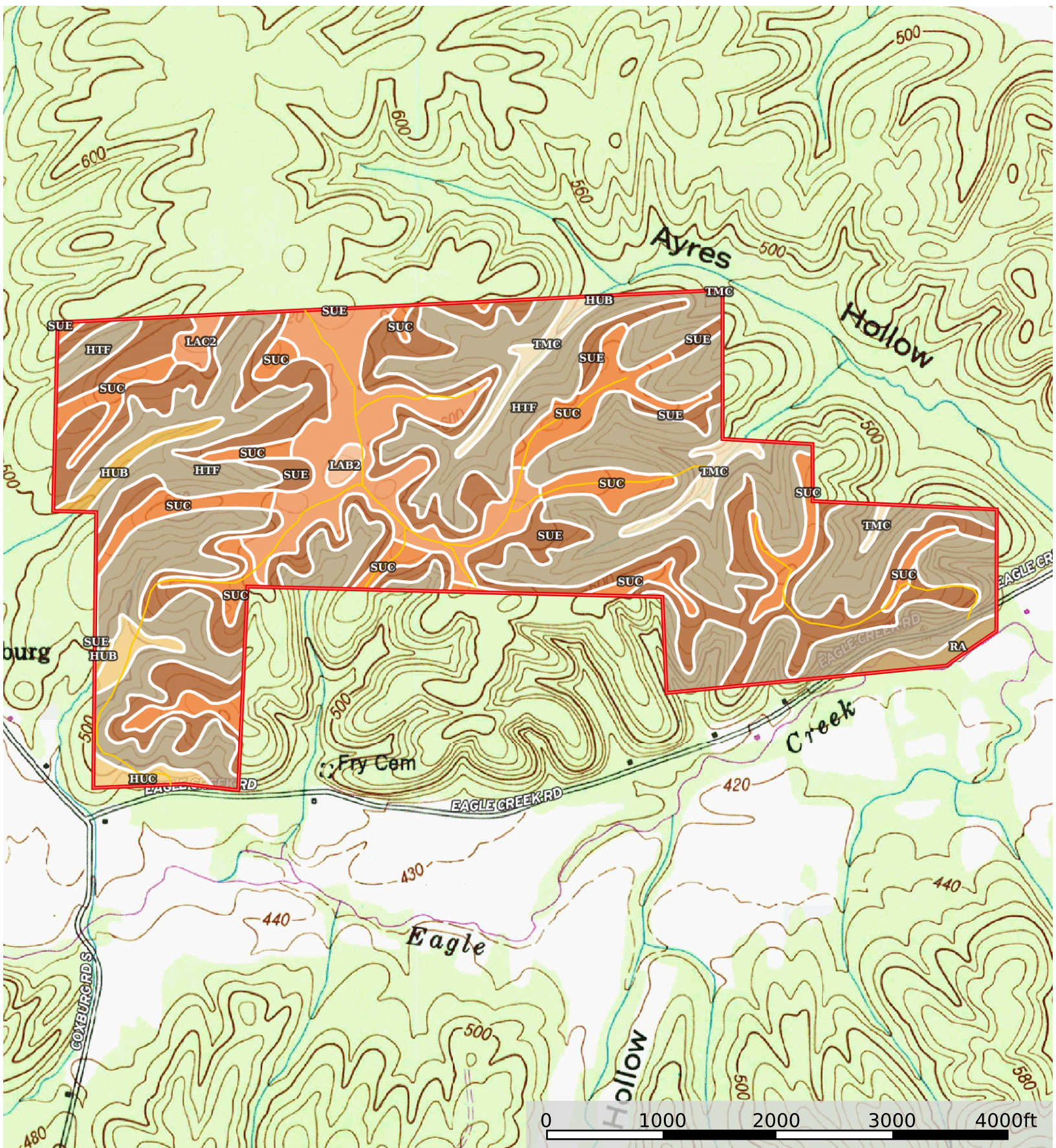


Benton 474
Tennessee, AC +/-



Interior Roads Boundary

|  Boundary 474.98 ac

SOIL CODE	SOIL DESCRIPTION	ACRES	%	CPI	NCCPI	CAP
HTF	Hawthorne, Sengtown, and Sugargrove soils, 25 to 70 percent slopes	224.4 7	47.26	0	11	7s
SuE	Sugargrove-Sengtown-Hawthorne complex, 12 to 25 percent slopes	124.8 6	26.29	0	43	6e
SuC	Sugargrove-Sengtown-Hawthorne complex, 5 to 12 percent slopes	53.22	11.2	0	50	4e
LaC2	Lax silt loam, 5 to 12 percent slopes, eroded	44.21	9.31	0	39	3e
TmC	Tarklin-Minvale complex, 5 to 12 percent slopes	9.88	2.08	0	46	3e
HuC	Humphreys gravelly silt loam, 5 to 12 percent slopes	7.42	1.56	0	59	3e
HuB	Humphreys gravelly silt loam, 2 to 5 percent slopes	4.8	1.01	0	60	2e
Ra	Riverby very gravelly loam, 0 to 3 percent slopes, frequently flooded	4.36	0.92	0	27	4s
LaB2	Lax silt loam, 2 to 5 percent slopes, eroded	1.76	0.37	0	40	2e
TOTALS		474.9 8(*)	100%	-	28.62	5.79

(*) Total acres may differ in the second decimal compared to the sum of each acreage soil. This is due to a round error because we only show the acres of each soil with two decimal.

Capability Legend

Increased Limitations and Hazards

Decreased Adaptability and Freedom of Choice Users

Land, Capability

								
	1	2	3	4	5	6	7	8
'Wild Life'	•	•	•	•	•	•	•	•
Forestry	•	•	•	•	•	•	•	
Limited	•	•	•	•	•	•	•	
Moderate	•	•	•	•	•	•		
Intense	•	•	•	•	•			
Limited	•	•	•	•				
Moderate	•	•	•					
Intense	•	•						
Very Intense	•							

Grazing Cultivation

(c) climatic limitations (e) susceptibility to erosion

(s) soil limitations within the rooting zone (w) excess of water