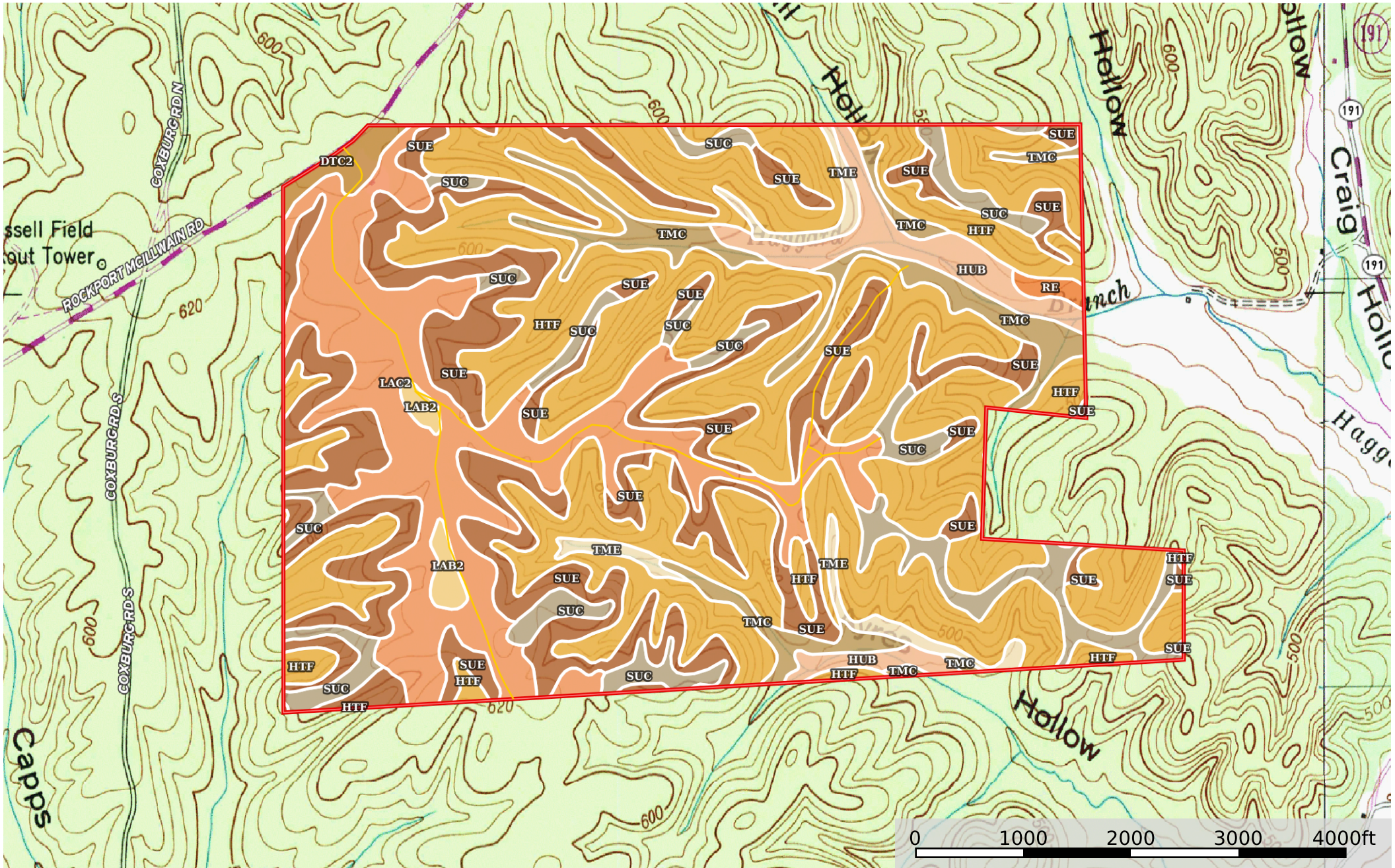


Benton 769
Tennessee, AC +/-



Primary Road Boundary

|  Boundary 769.72 ac

| SOIL CODE | SOIL DESCRIPTION | ACRES | % | CPI | NCCPI | CAP |
|-----------|--|---------------|-------|-----|-------|------|
| HTF | Hawthorne, Sengtown, and Sugargrove soils, 25 to 70 percent slopes | 341.6 | 44.38 | 0 | 11 | 7s |
| SuE | Sugargrove-Sengtown-Hawthorne complex, 12 to 25 percent slopes | 168.4 4 | 21.88 | 0 | 43 | 6e |
| LaC2 | Lax silt loam, 5 to 12 percent slopes, eroded | 116.8 8 | 15.18 | 0 | 39 | 3e |
| SuC | Sugargrove-Sengtown-Hawthorne complex, 5 to 12 percent slopes | 51.7 | 6.72 | 0 | 50 | 4e |
| TmC | Tarklin-Minvale complex, 5 to 12 percent slopes | 37.42 | 4.86 | 0 | 46 | 3e |
| HuB | Humphreys gravelly silt loam, 2 to 5 percent slopes | 26.54 | 3.45 | 0 | 60 | 2e |
| TmE | Tarklin-Minvale complex, 12 to 35 percent slopes | 12.99 | 1.69 | 0 | 41 | 6e |
| DtC2 | Dulac-Tippah complex, 5 to 8 percent slopes, eroded | 6.25 | 0.81 | 0 | 48 | 3e |
| LaB2 | Lax silt loam, 2 to 5 percent slopes, eroded | 5.37 | 0.7 | 0 | 40 | 2e |
| Re | Riverby-Ennis complex, 0 to 3 percent slopes, occasionally flooded | 2.53 | 0.33 | 0 | 40 | 4s |
| TOTALS | | 769.7 2(*) | 100% | - | 29.37 | 5.51 |

(*) Total acres may differ in the second decimal compared to the sum of each acreage soil. This is due to a round error because we only show the acres of each soil with two decimal.

Capability Legend

Increased Limitations and Hazards

Decreased Adaptability and Freedom of Choice Users

Land, Capability

| |  |  |  |  |  |  |  |  |
|--------------|---|---|---|---|--|---|---|---|
| | 1 | 2 | 3 | 4 | 5 | 6 | 7 | 8 |
| 'Wild Life' | • | • | • | • | • | • | • | • |
| Forestry | • | • | • | • | • | • | • | |
| Limited | • | • | • | • | • | • | • | |
| Moderate | • | • | • | • | • | • | | |
| Intense | • | • | • | • | • | | | |
| Limited | • | • | • | • | | | | |
| Moderate | • | • | • | | | | | |
| Intense | • | • | | | | | | |
| Very Intense | • | | | | | | | |

Grazing Cultivation

(c) climatic limitations (e) susceptibility to erosion

(s) soil limitations within the rooting zone (w) excess of water