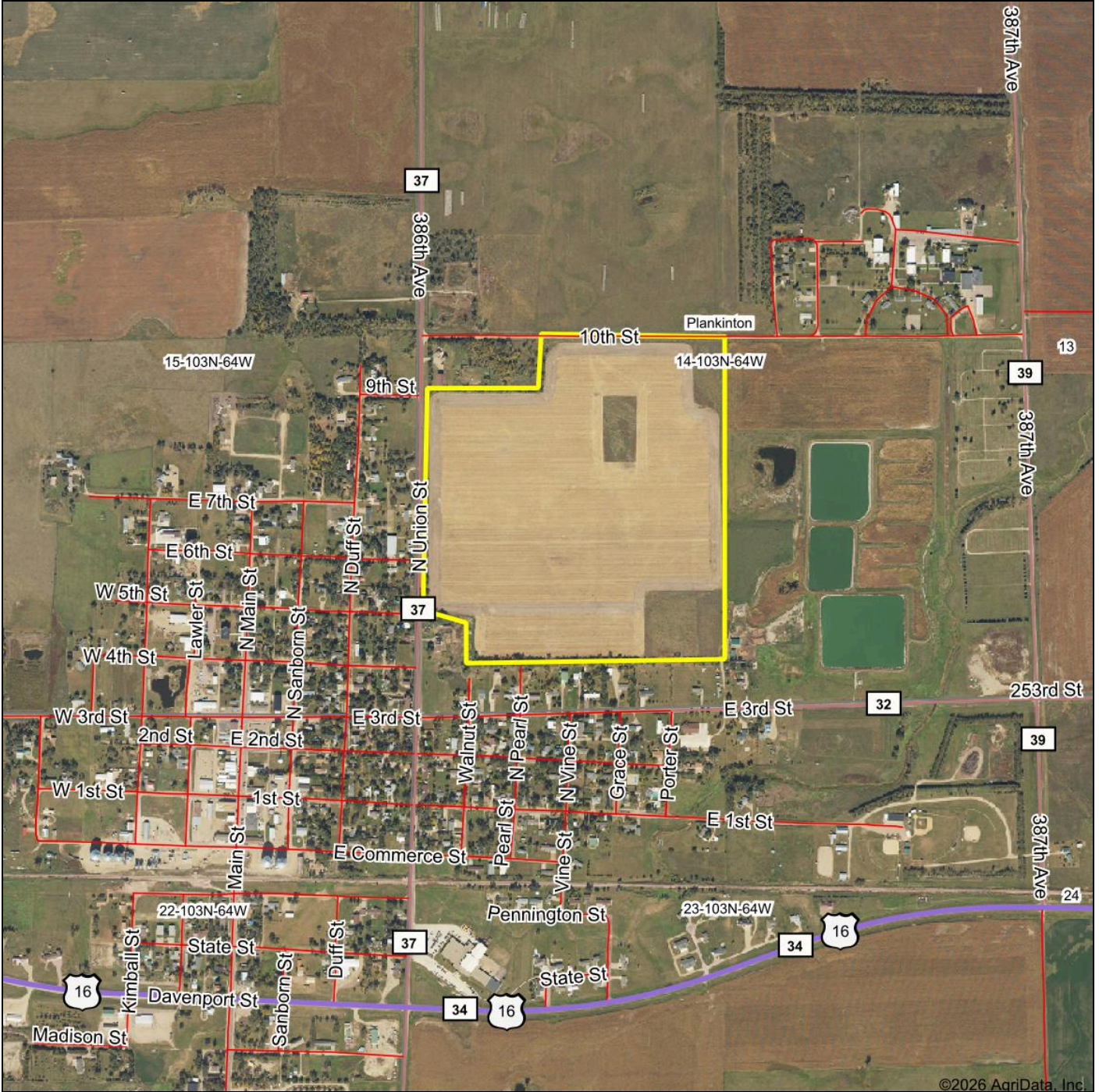


Aerial Map



©2026 AgriData, Inc.



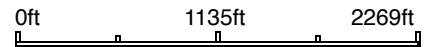
HIGH POINT
LAND COMPANY

Maps Provided By:



© AgriData, Inc. 2025 www.AgrIDataInc.com

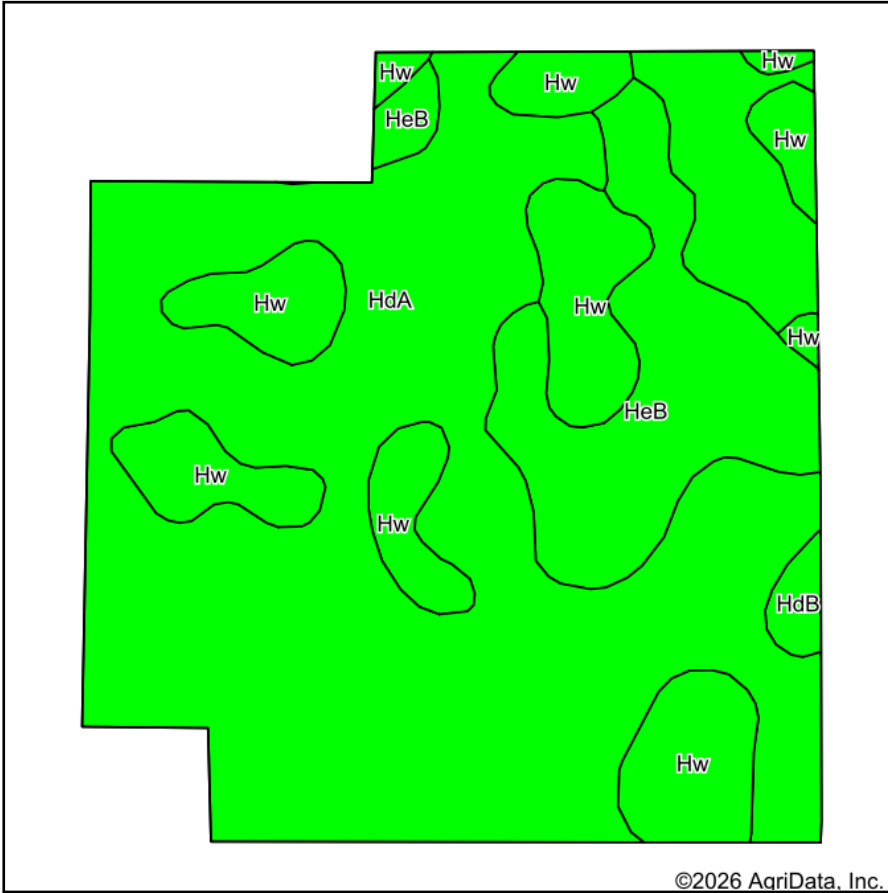
Boundary Center: 43° 43' 12.95, -98° 28' 33.47



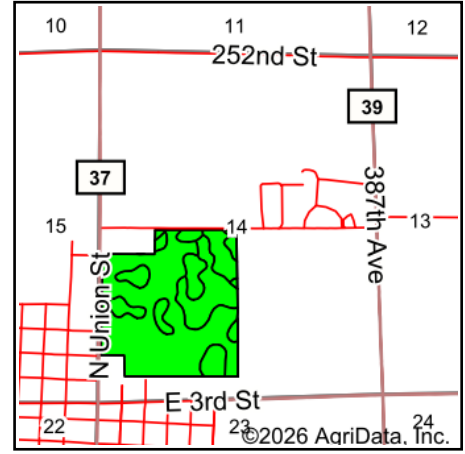
14-103N-64W
Aurora County
South Dakota

5/22/2026

Soils Map



Soils data provided by USDA and NRCS.



State: **South Dakota**
 County: **Aurora**
 Location: **14-103N-64W**
 Township: **Plankinton**
 Acres: **104.29**
 Date: **6/25/2026**



Maps Provided By:

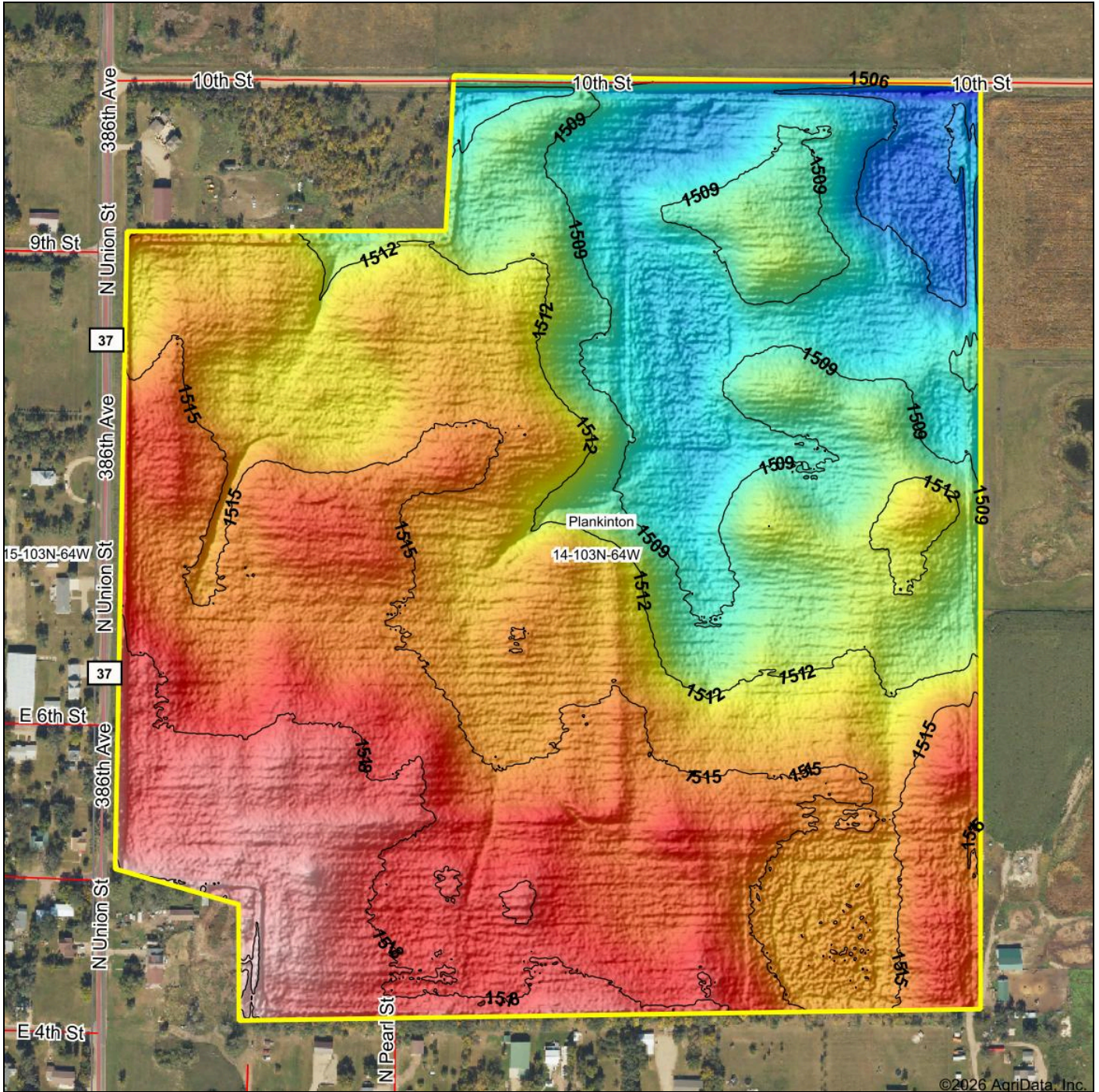


Area Symbol: SD003, Soil Area Version: 31

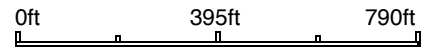
Code	Soil Description	Acres	Percent of field	PI Legend	Non-Irr Class *c	Productivity Index
HdA	Houdek-Dudley complex, 0 to 2 percent slopes	69.13	66.3%		IIc	61
Hw	Hoven-Plankinton silt loams	19.32	18.5%		VIIs	36
HeB	Houdek-Ethan loams, 2 to 6 percent slopes	14.87	14.3%		IIe	75
HdB	Houdek-Dudley complex, 2 to 6 percent slopes	0.97	0.9%		IIe	66
Weighted Average					2.74	58.4

*c: Using Capabilities Class Dominant Condition Aggregation Method

Topography Hillshade



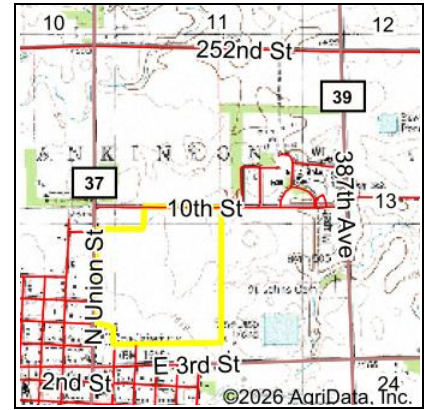
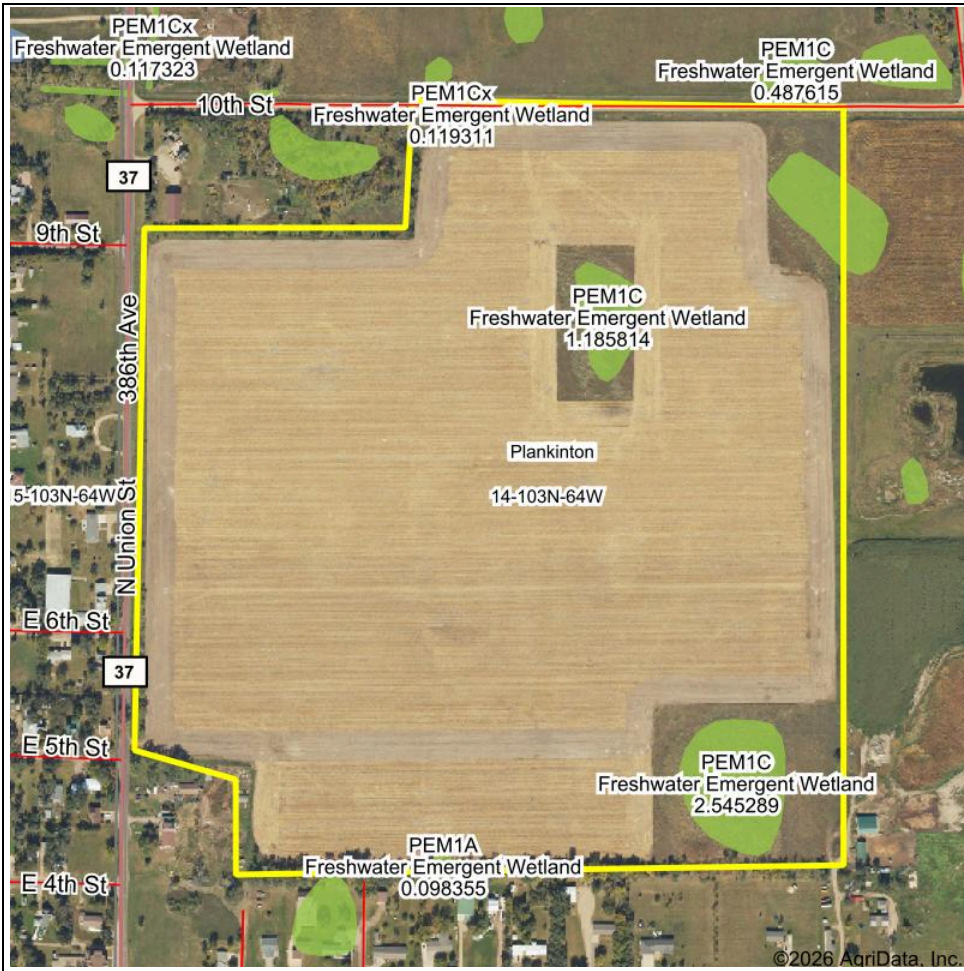
Source: USGS 1 meter dem
 Interval(ft): 3
 Min: 1,503.3
 Max: 1,522.0
 Range: 18.7
 Average: 1,513.4
 Standard Deviation: 3.77 ft



14-103N-64W
Aurora County
South Dakota

Boundary Center: 43° 43' 12.95, -98° 28' 33.47

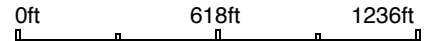
Wetlands Map



State: **South Dakota**
 Location: **14-103N-64W**
 County: **Aurora**
 Township: **Plankinton**
 Date: **5/22/2026**



© AgriData, Inc. 2025 www.AgriDataInc.com



Classification Code	Type	Acres
PEM1C	Freshwater Emergent Wetland	4.84
PEM1Cx	Freshwater Emergent Wetland	0.12
PEM1A	Freshwater Emergent Wetland	0.07
Total Acres		5.03

Data Source: National Wetlands Inventory website. U.S. DoI, Fish and Wildlife Service, Washington, D.C. <http://www.fws.gov/wetlands/>