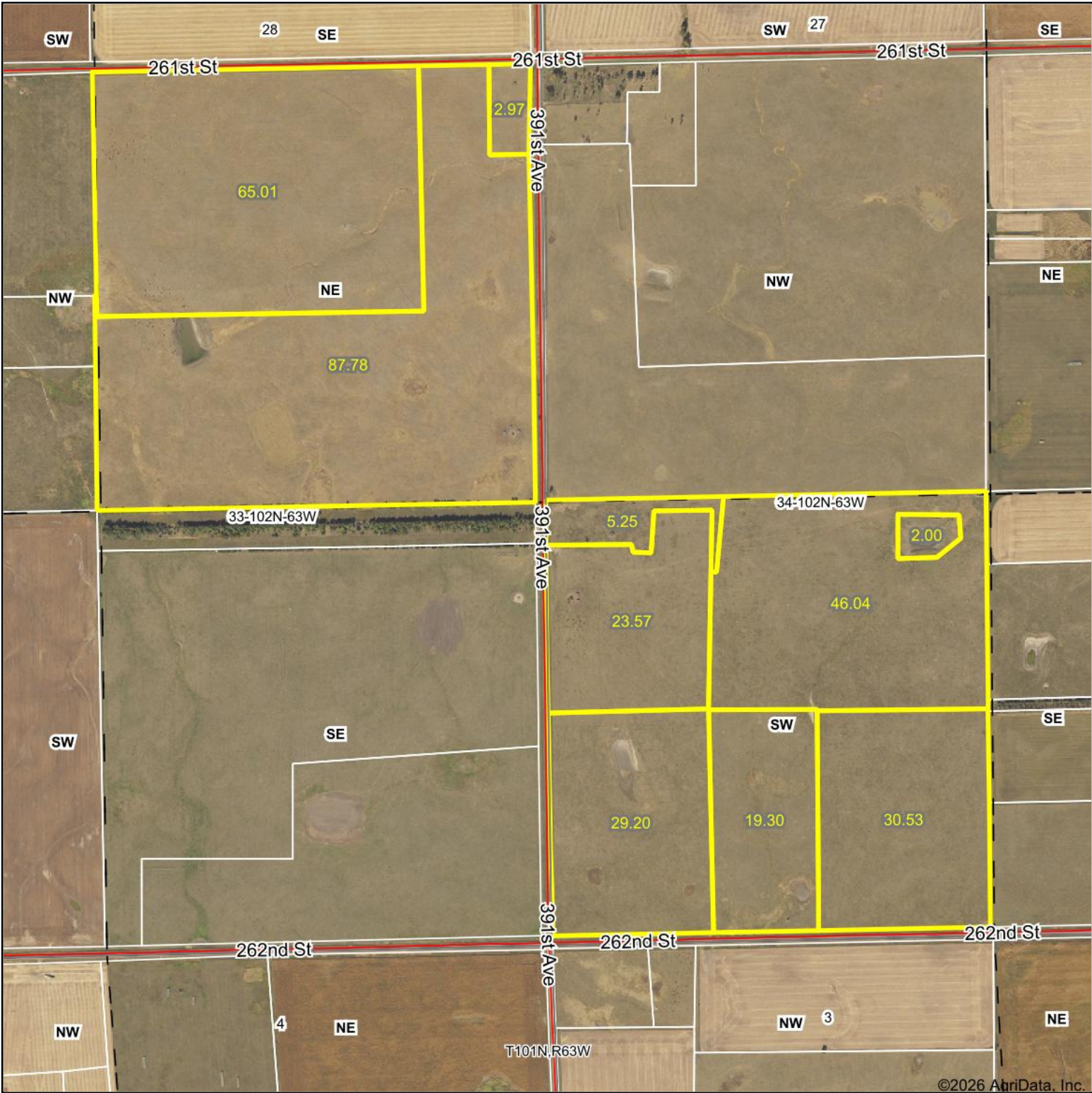
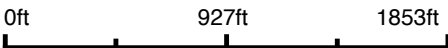


Aerial Map



©2026 AgriData, Inc.

Boundary Center: 43° 35' 36.33, -98° 23' 6.53



33-102N-63W
Aurora County
South Dakota

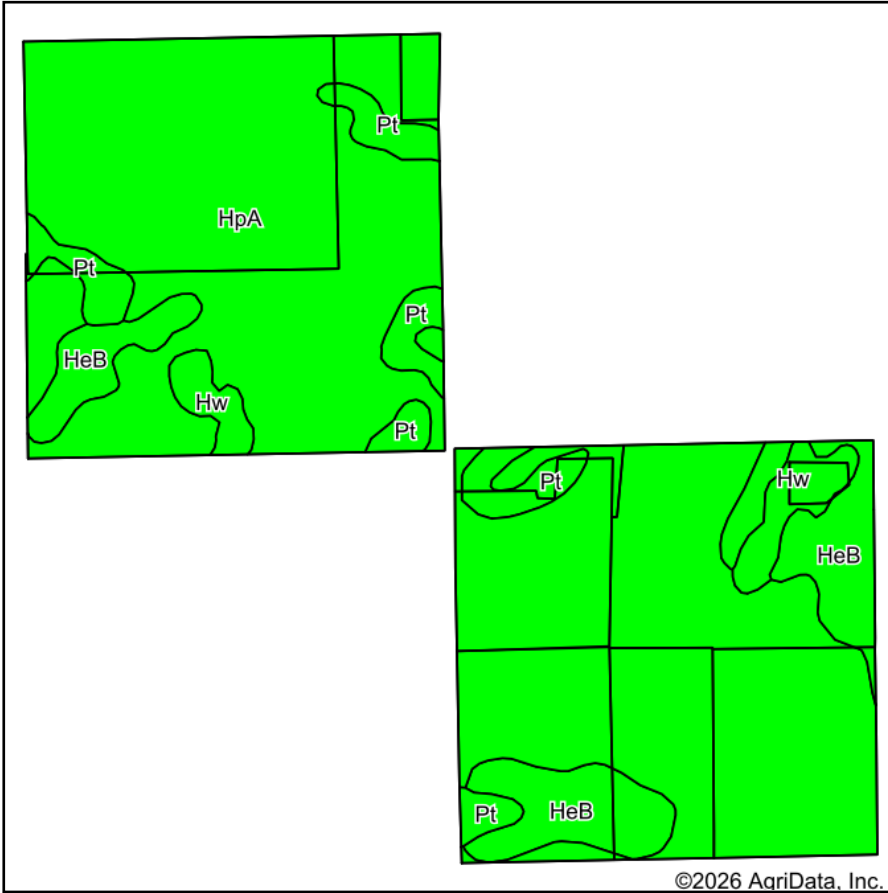


Maps Provided By:
surety
 CUSTOMIZED ONLINE MAPPING
 © AgriData, Inc. 2025 www.AgriDataInc.com

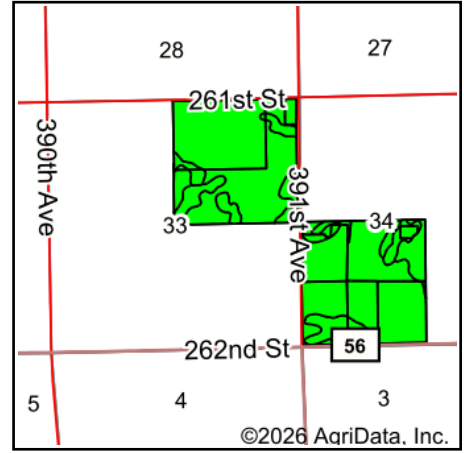
5/28/2026

Field borders provided by Farm Service Agency as of 5/21/2008.

Soils Map



Soils data provided by USDA and NRCS.



State: **South Dakota**
 County: **Aurora**
 Location: **33-102N-63W**
 Township: **Dudley**
 Acres: **311.65**
 Date: **6/25/2026**



Maps Provided By:

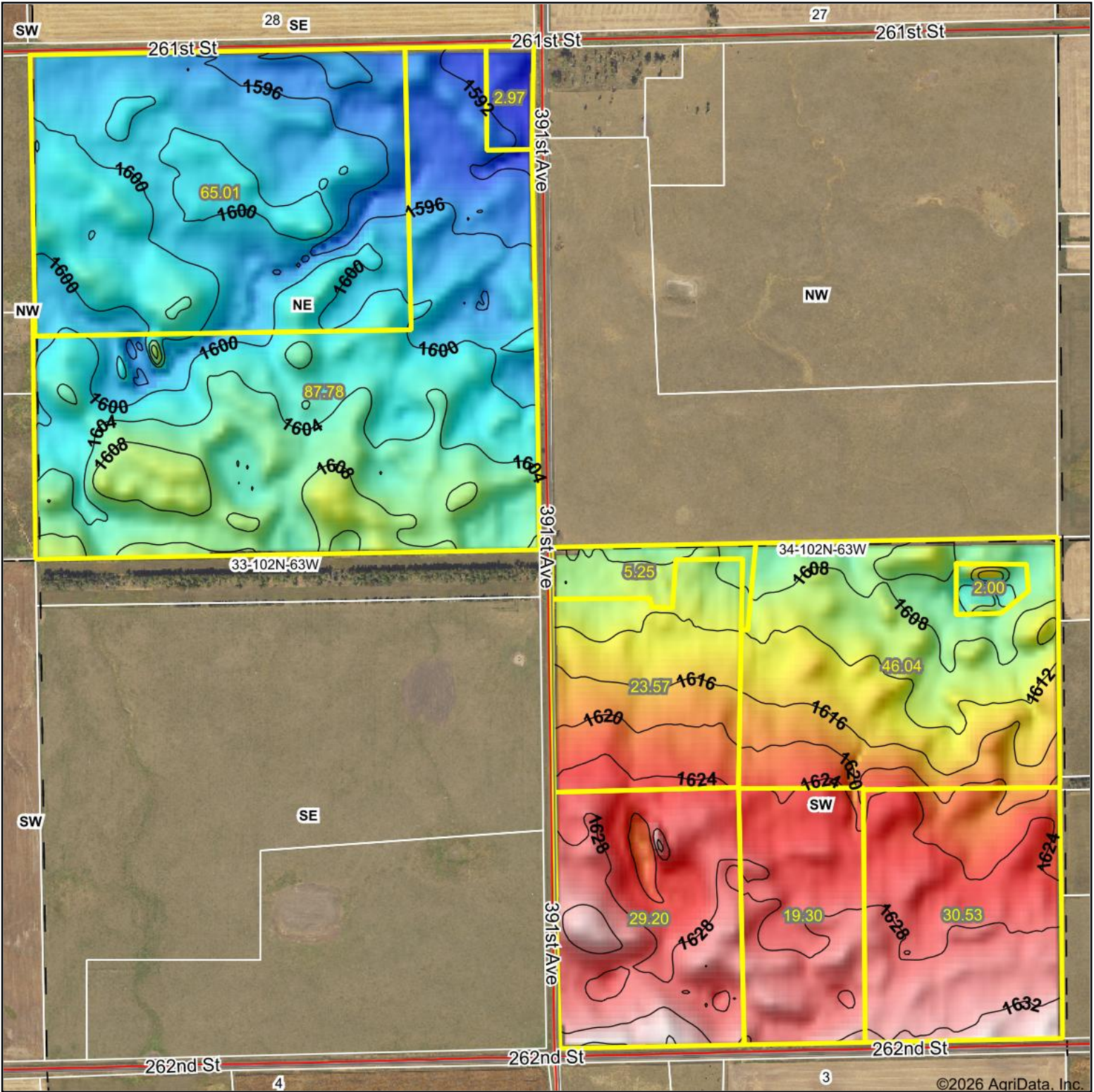


Area Symbol: SD003, Soil Area Version: 31

Code	Soil Description	Acres	Percent of field	PI Legend	Non-Irr Class *c	Productivity Index
HpA	Houdek-Prosper loams, 0 to 2 percent slopes	245.34	78.7%		IIc	88
HeB	Houdek-Ethan loams, 2 to 6 percent slopes	35.41	11.4%		IIe	75
Pt	Plankinton-Prosper complex	20.41	6.5%		IVw	67
Hw	Hoven-Plankinton silt loams	10.49	3.4%		VIIs	36
Weighted Average					2.27	83.4

*c: Using Capabilities Class Dominant Condition Aggregation Method

Topography Hillshade



Source: USGS 10 meter dem



Interval(ft): 4

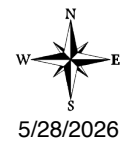
Min: 1,588.6

Max: 1,637.6

Range: 49.0

Average: 1,610.8

Standard Deviation: 12.14 ft



33-102N-63W
Aurora County
South Dakota

Boundary Center: 43° 35' 36.33, -98° 23' 6.53



Maps Provided By:

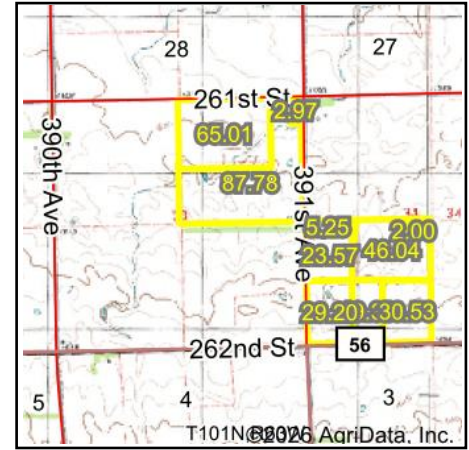
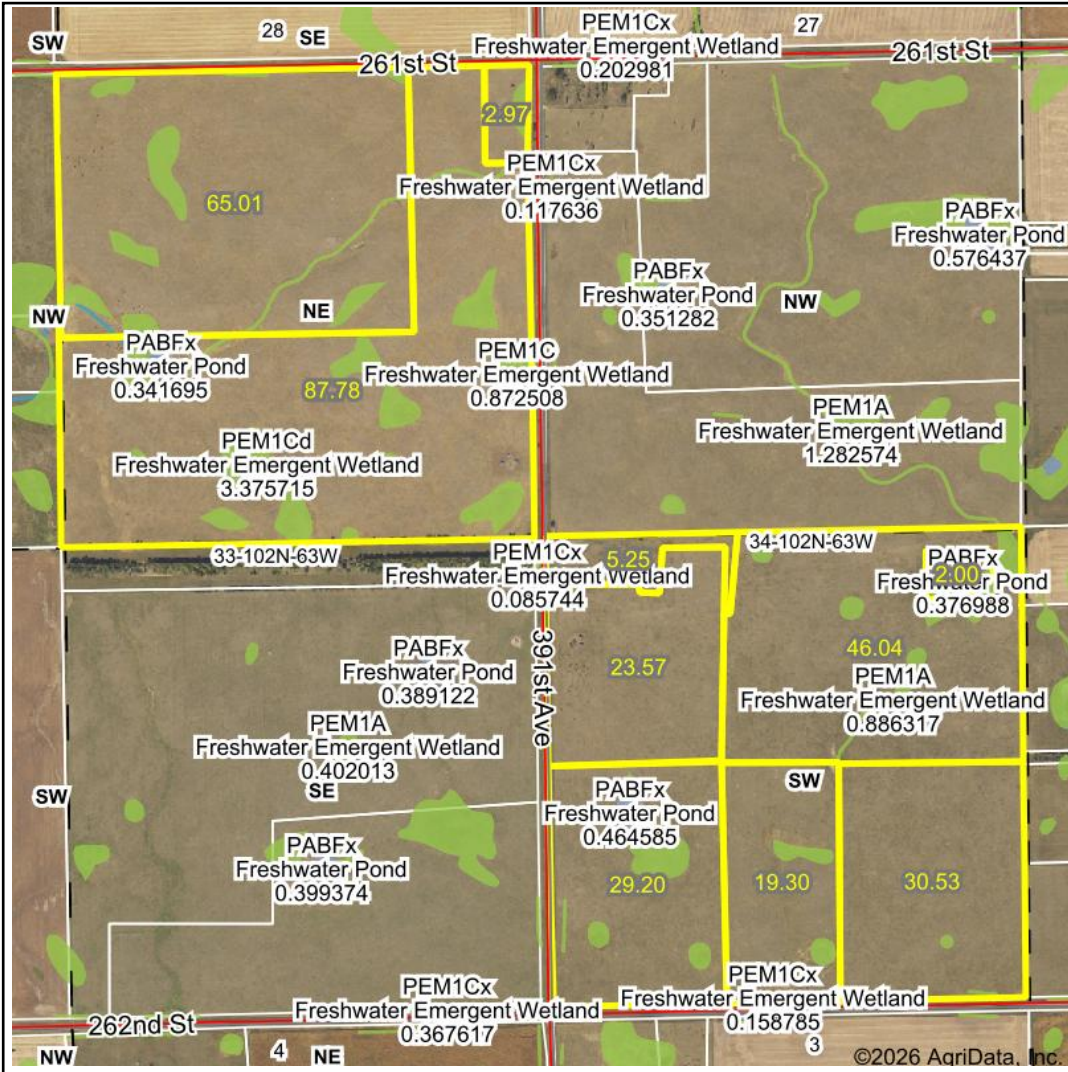


© AgriData, Inc. 2025 www.AgriDataInc.com

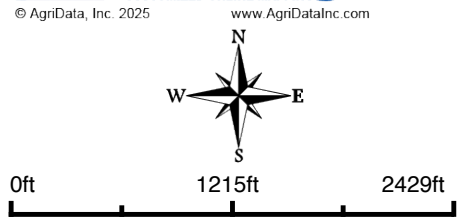
Field borders provided by Farm Service Agency as of 5/21/2008.

©2026 AgriData, Inc.

Wetlands Map



State: South Dakota
Location: 33-102N-63W
County: Aurora
Township: Dudley
Date: 5/28/2026



Classification Code	Type	Acres
PEM1A	Freshwater Emergent Wetland	9.24
PEM1C	Freshwater Emergent Wetland	7.08
PEM1Cd	Freshwater Emergent Wetland	4.90
PEM1Ad	Freshwater Emergent Wetland	3.09
PABFx	Freshwater Pond	1.18
PEM1Cx	Freshwater Emergent Wetland	0.55
R4SBC	Riverine	0.17
Total Acres		26.21

Data Source: National Wetlands Inventory website. U.S. DoI, Fish and Wildlife Service, Washington, D.C. <http://www.fws.gov/wetlands/>