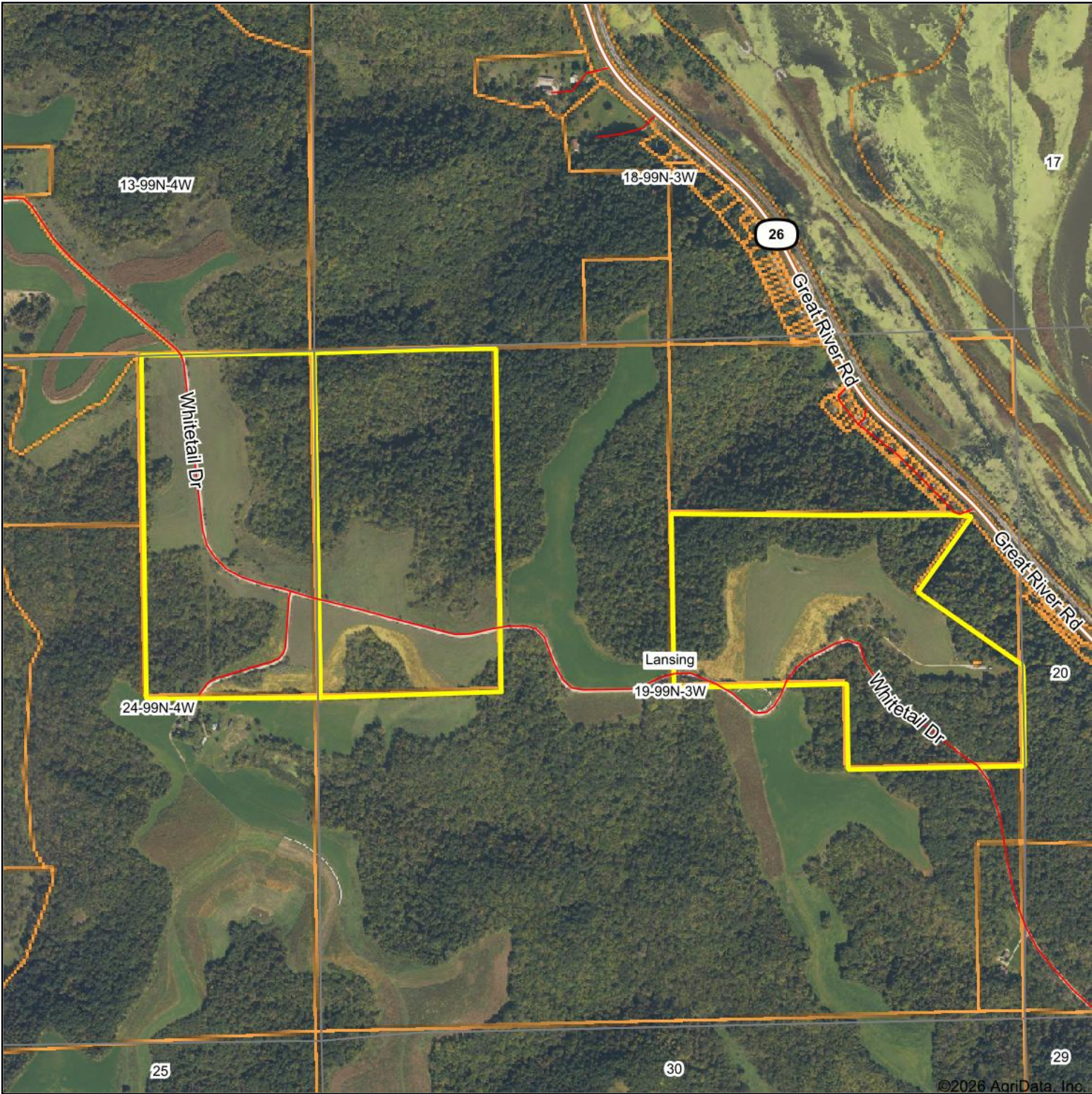
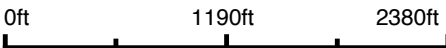


# Aerial Map



©2026 AgriData, Inc.

Boundary Center: 43° 22' 48.12, -91° 14' 41.69



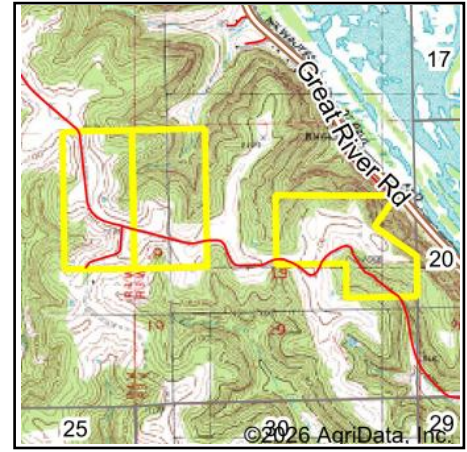
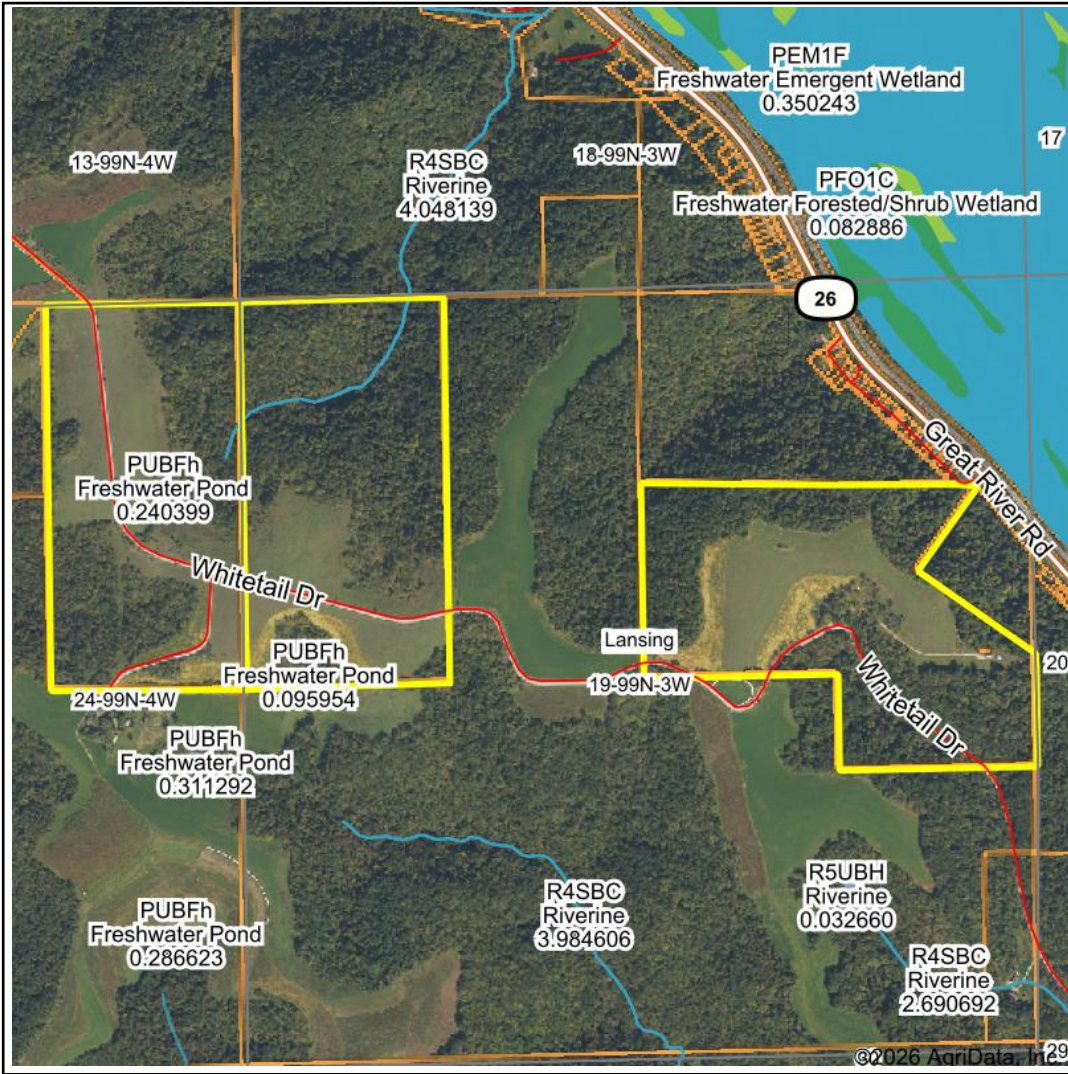
**19-99N-3W**  
**Allamakee County**  
**Iowa**



Maps Provided By:  
**surety**  
CUSTOMIZED ONLINE MAPPING  
© AgriData, Inc. 2025      www.AgriDataInc.com

4/17/2026

# Wetlands Map



**State:** Iowa  
**Location:** 19-99N-3W  
**County:** Allamakee  
**Township:** Lansing  
**Date:** 4/17/2026



© AgriData, Inc. 2025 www.AgriDataInc.com

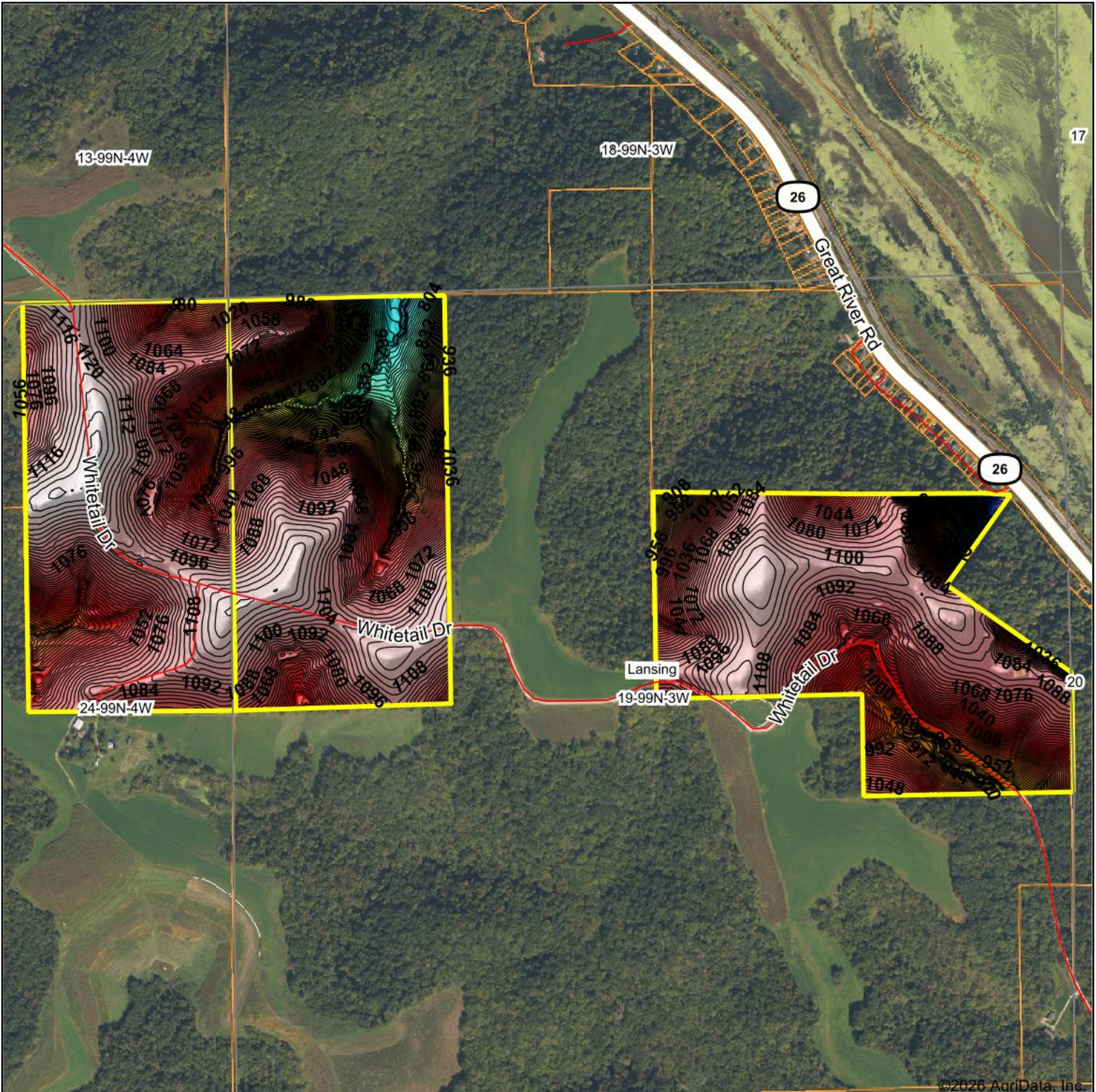


0ft 1498ft 2996ft

| Classification Code | Type            | Acres |
|---------------------|-----------------|-------|
| R4SBC               | Riverine        | 0.86  |
| PUBFh               | Freshwater Pond | 0.34  |
| Total Acres         |                 | 1.20  |

Data Source: National Wetlands Inventory website. U.S. Dol, Fish and Wildlife Service, Washington, D.C. <http://www.fws.gov/wetlands/>

# Topography Hillshade



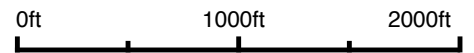
**HIGH POINT**  
LAND COMPANY

Maps Provided By:

**surety**  
CUSTOMIZED ONLINE MAPPING

© AgriData, Inc. 2025 [www.AgriDataInc.com](http://www.AgriDataInc.com)

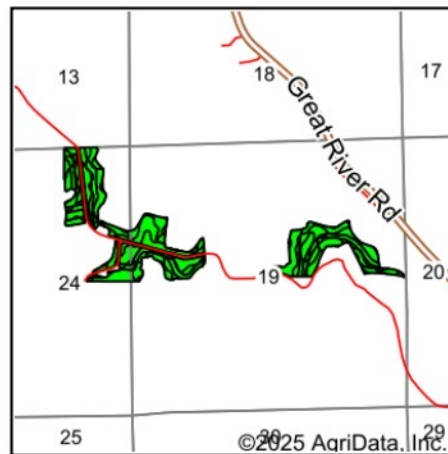
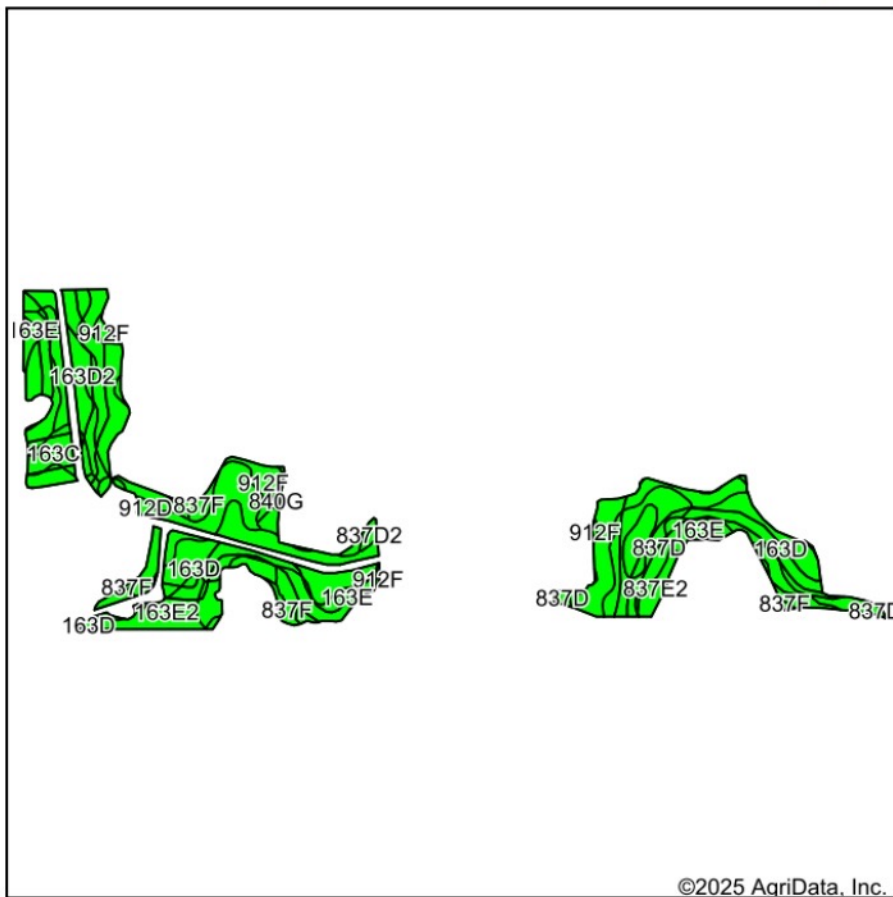
Source: USGS 3 meter dem  
Interval(ft): 4  
Min: 665.9  
Max: 1,136.7  
Range: 470.8  
Average: 1,044.7  
Standard Deviation: 76.44 ft



**19-99N-3W**  
**Allamakee County**  
**Iowa**

Boundary Center: 43° 22' 48.12, -91° 14' 41.69

# Soils Map



State: **Iowa**  
 County: **Allamakee**  
 Location: **19-99N-3W**  
 Township: **Lansing**  
 Acres: **78.96**  
 Date: **9/28/2025**



Maps Provided By:



Soils data provided by USDA and NRCS.

Area Symbol: IA005, Soil Area Version: 28

| Code  | Soil Description  | Acres | Percent of field | CSR2 Legend | Non-Irr Class *c | CSR2** | CSR | *n NCCPI Overall | *n NCCPI Corn | *n NCCPI Small Grains | *n NCCPI Soybeans |
|-------|---|-------|------------------|-------------|------------------|--------|-----|------------------|---------------|-----------------------|-------------------|
| 163D  | Fayette silt loam, 9 to 14 percent slopes                     | 15.85 | 20.1%            |             | IIIe             | 49     | 60  | 82               | 82            | 71                    | 70                |
| 837D  | Village silt loam, 9 to 14 percent slopes                     | 13.70 | 17.4%            |             | IIIs             | 43     | 33  | 66               | 66            | 65                    | 54                |
| 837E2 | Village silt loam, 14 to 18 percent slopes, moderately eroded | 11.72 | 14.8%            |             | IVe              | 27     | 13  | 58               | 58            | 53                    | 44                |
| 163E  | Fayette silt loam, 14 to 18 percent slopes                    | 8.44  | 10.7%            |             | IVe              | 38     | 50  | 78               | 78            | 66                    | 65                |
| 163D2 | Fayette silt loam, 9 to 14 percent slopes, moderately eroded  | 6.43  | 8.1%             |             | IIIe             | 46     | 58  | 78               | 78            | 66                    | 62                |
| 837E  | Village silt loam, 14 to 18 percent slopes                    | 6.26  | 7.9%             |             | IVe              | 30     | 18  | 61               | 61            | 60                    | 49                |
| 163C  | Fayette silt loam, 5 to 9 percent slopes                      | 4.34  | 5.5%             |             | IIIe             | 75     | 70  | 86               | 86            | 75                    | 74                |
| 163E2 | Fayette silt loam, 14 to 18 percent slopes, moderately eroded | 3.65  | 4.6%             |             | IVe              | 35     | 48  | 74               | 74            | 62                    | 58                |
| 912F  | Paintcreek silt loam, 18 to 30 percent slopes                 | 2.55  | 3.2%             |             | VIe              | 5      | 5   | 26               | 26            | 22                    | 19                |
| 912E  | Paintcreek silt loam, 14 to 18 percent slopes                 | 2.04  | 2.6%             |             | VIe              | 10     | 10  | 53               | 49            | 53                    | 45                |
| 837F  | Village silt loam, 18 to 25 percent slopes                    | 1.89  | 2.4%             |             | VIe              | 12     | 5   | 48               | 48            | 36                    | 35                |
| 912D  | Paintcreek silt loam, 9 to 14 percent slopes                  | 1.36  | 1.7%             |             | IVe              | 23     | 13  | 57               | 51            | 56                    | 48                |

Soils data provided by USDA and NRCS.



| Code                    | Soil Description   | Acres | Percent of field | CSR2 Legend | Non-Irr Class *c | CSR2**      | CSR         | *n NCCPI Overall | *n NCCPI Corn  | *n NCCPI Small Grains | *n NCCPI Soybeans |                |
|-------------------------|--|-------|------------------|-------------|------------------|-------------|-------------|------------------|----------------|-----------------------|-------------------|----------------|
| 837D2                   | Village silt loam, 9 to 14 percent slopes, moderately eroded | 0.45  | 0.6%             |             | IIIe             | 40          | 28          | 62               | 62             | 60                    | 47                |                |
| 840G                    | Lacrescent silt loam, 25 to 70 percent slopes                | 0.28  | 0.4%             |             | VIIe             | 5           | 5           | 12               | 12             | 11                    | 6                 |                |
| <b>Weighted Average</b> |  |       |                  |             |                  | <b>3.66</b> | <b>38.6</b> | <b>38.2</b>      | <b>*n 68.9</b> | <b>*n 68.7</b>        | <b>*n 61.9</b>    | <b>*n 56.3</b> |

\*\*IA has updated the CSR values for each county to CSR2.

\*n: The aggregation method is "Weighted Average using all components"

\*c: Using Capabilities Class Dominant Condition Aggregation Method