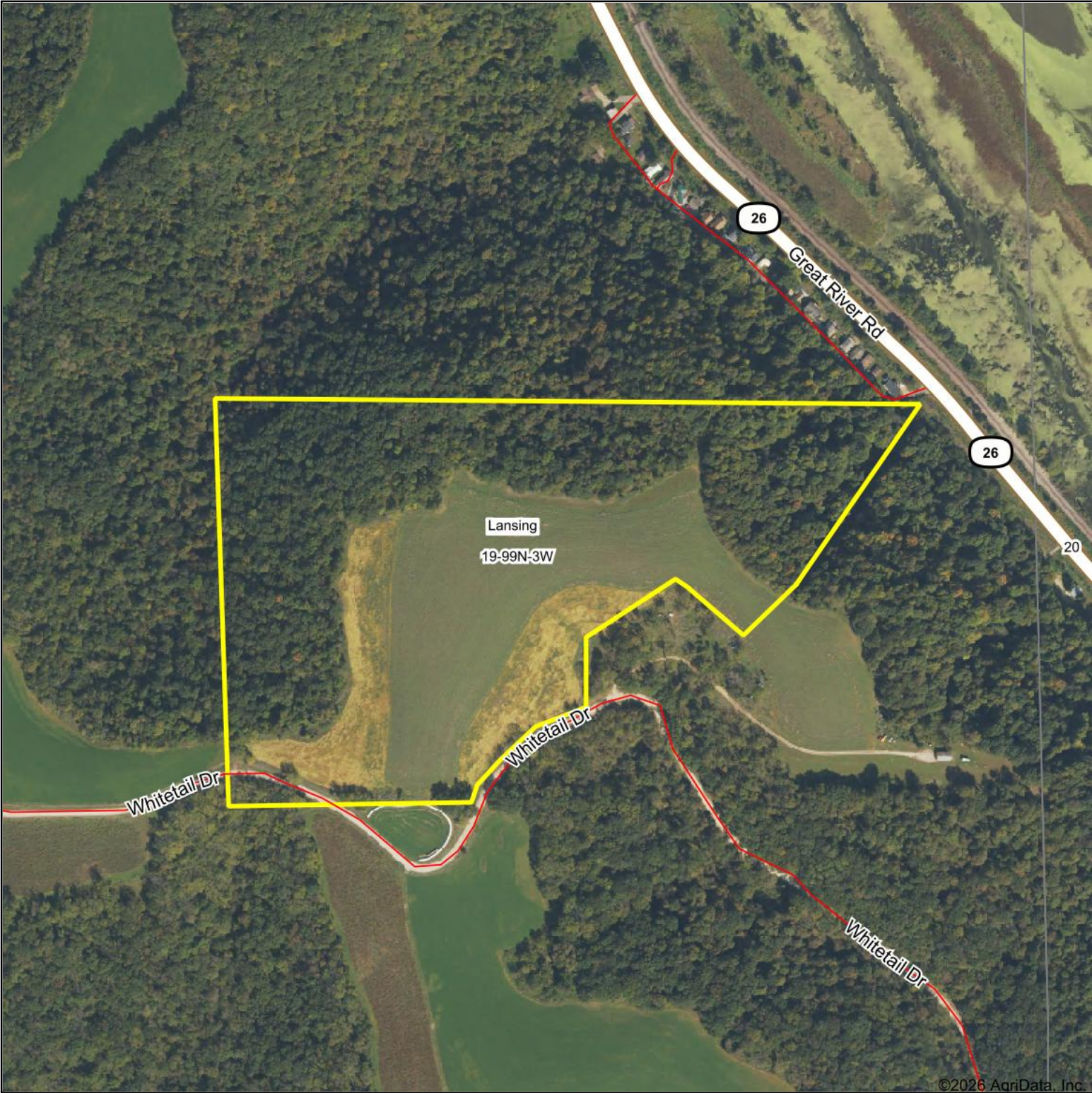


# Aerial Map



©2026 AgriData, Inc.

Boundary Center: 43° 22' 44.96, -91° 14' 16.96

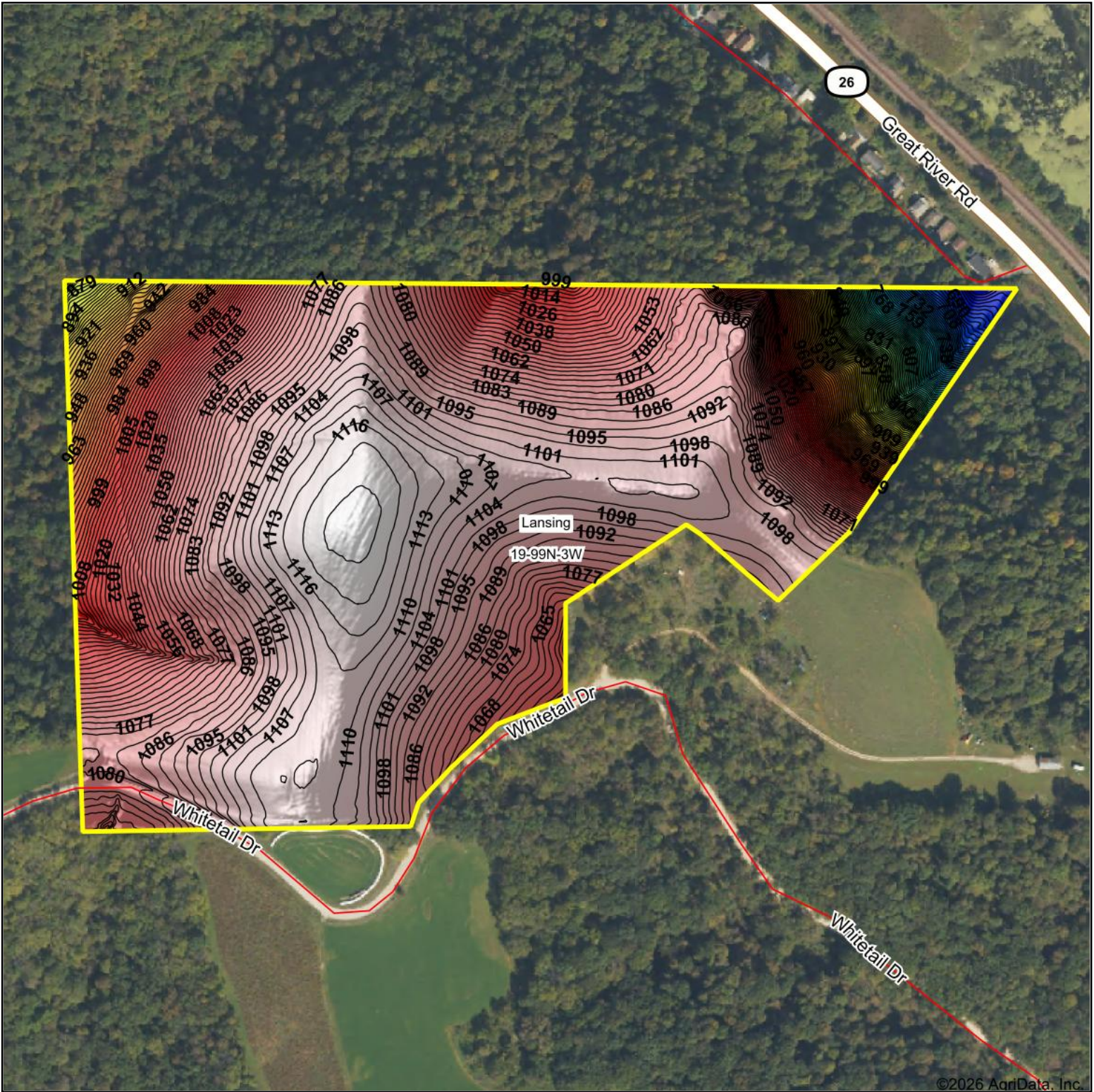


**19-99N-3W**  
**Allamakee County**  
**Iowa**



4/27/2026

# Topography Hillshade



©2026 AgriData, Inc.



Maps Provided By:



© AgriData, Inc. 2025 www.AgriDataInc.com

Source: USGS 1 meter dem

Interval(ft): 3

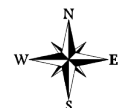
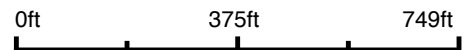
Min: 665.9

Max: 1,123.4

Range: 457.5

Average: 1,057.4

Standard Deviation: 76.61 ft

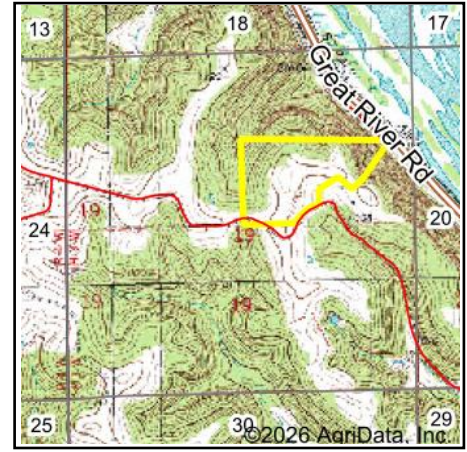


4/27/2026

**19-99N-3W**  
**Allamakee County**  
**Iowa**

Boundary Center: 43° 22' 44.96, -91° 14' 16.96

# Wetlands Map



State: **Iowa**  
 Location: **19-99N-3W**  
 County: **Allamakee**  
 Township: **Lansing**  
 Date: **4/27/2026**



Maps Provided By:



© AgriData, Inc. 2025 www.AgriDataInc.com

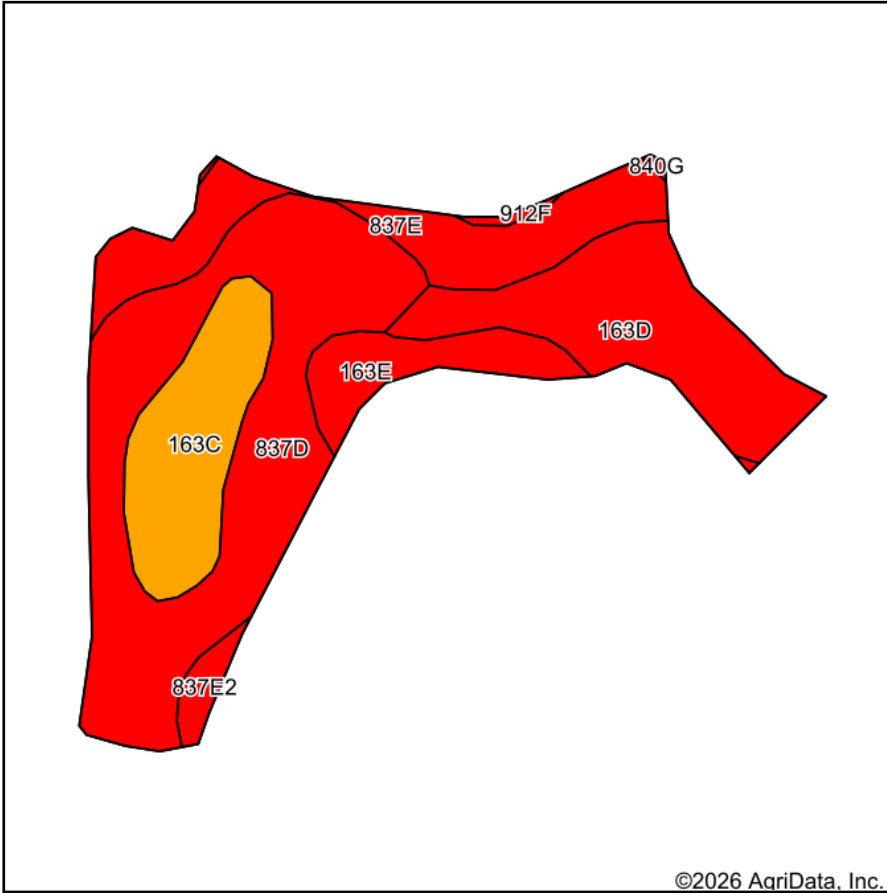


0ft 589ft 1178ft

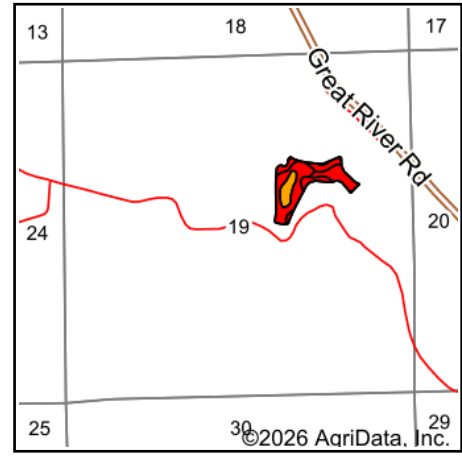
Classification Code	Type	Acres
	Total Acres	0.00

Data Source: National Wetlands Inventory website. U.S. DoI, Fish and Wildlife Service, Washington, D.C. <http://www.fws.gov/wetlands/>

# Soils Map



Soils data provided by USDA and NRCS.



State: **Iowa**  
 County: **Allamakee**  
 Location: **19-99N-3W**  
 Township: **Lansing**  
 Acres: **13.16**  
 Date: **4/27/2026**



Maps Provided By:



© AgriData, Inc. 2025

www.AgriDataInc.com



Area Symbol: IA005, Soil Area Version: 29

Code	Soil Description	Acres	Percent of field	CSR2 Legend	Restrictive Layer	Soil Drainage	Non-Irr Class *c	CSR2**	CSR	
837D	Village silt loam, 9 to 14 percent slopes	5.30	40.2%		> 6.5ft.	Well drained	IIIs	43	33	
163D	Fayette silt loam, 9 to 14 percent slopes	2.63	20.0%		> 6.5ft.	Well drained	IIIe	49	60	
837E	Village silt loam, 14 to 18 percent slopes	2.02	15.3%		> 6.5ft.	Well drained	IVe	30	18	
163C	Fayette silt loam, 5 to 9 percent slopes	1.93	14.7%		> 6.5ft.	Well drained	IIIe	75	70	
163E	Fayette silt loam, 14 to 18 percent slopes	0.97	7.4%		> 6.5ft.	Well drained	IVe	38	50	
837E2	Village silt loam, 14 to 18 percent slopes, moderately eroded	0.25	1.9%		> 6.5ft.	Well drained	IVe	27	13	
912F	Paintcreek silt loam, 18 to 30 percent slopes	0.06	0.5%		> 6.5ft.	Well drained	VIe	5	5	
<b>Weighted Average</b>								<b>3.26</b>	<b>46.1</b>	<b>42.3</b>

\*\*IA has updated the CSR values for each county to CSR2.

\*c: Using Capabilities Class Dominant Condition Aggregation Method

Soils data provided by USDA and NRCS.