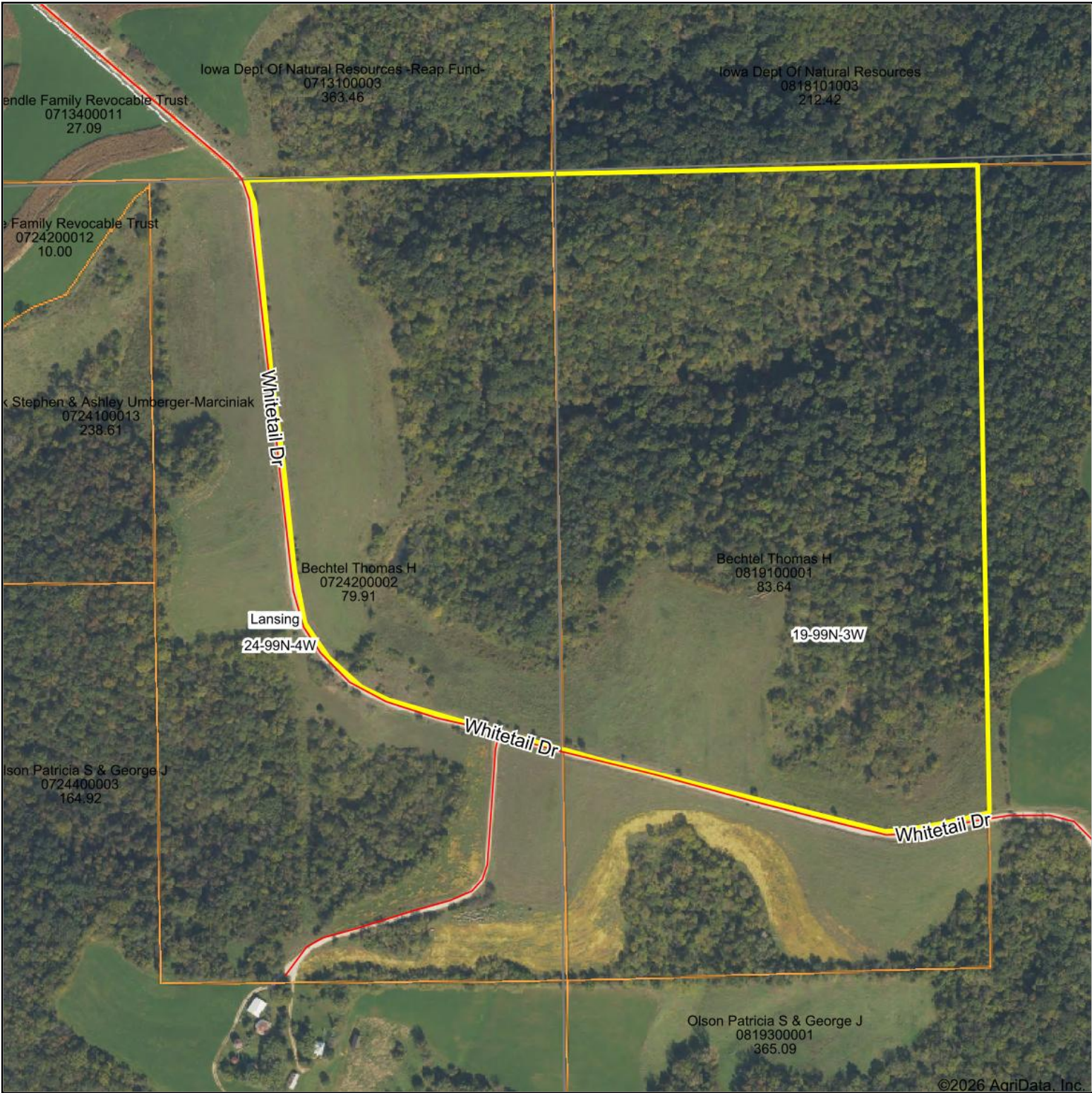
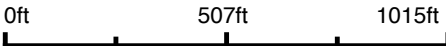


Aerial Map



©2026 AgriData, Inc.

Boundary Center: 43° 22' 53.57, -91° 15' 6.45



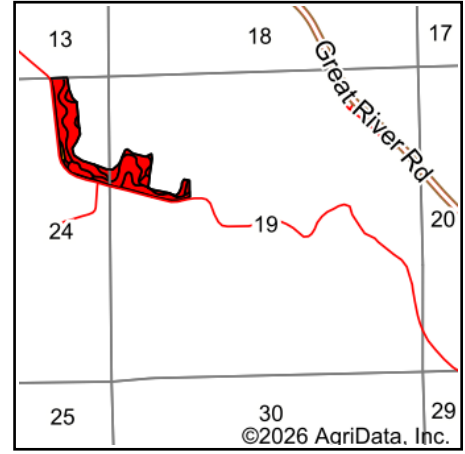
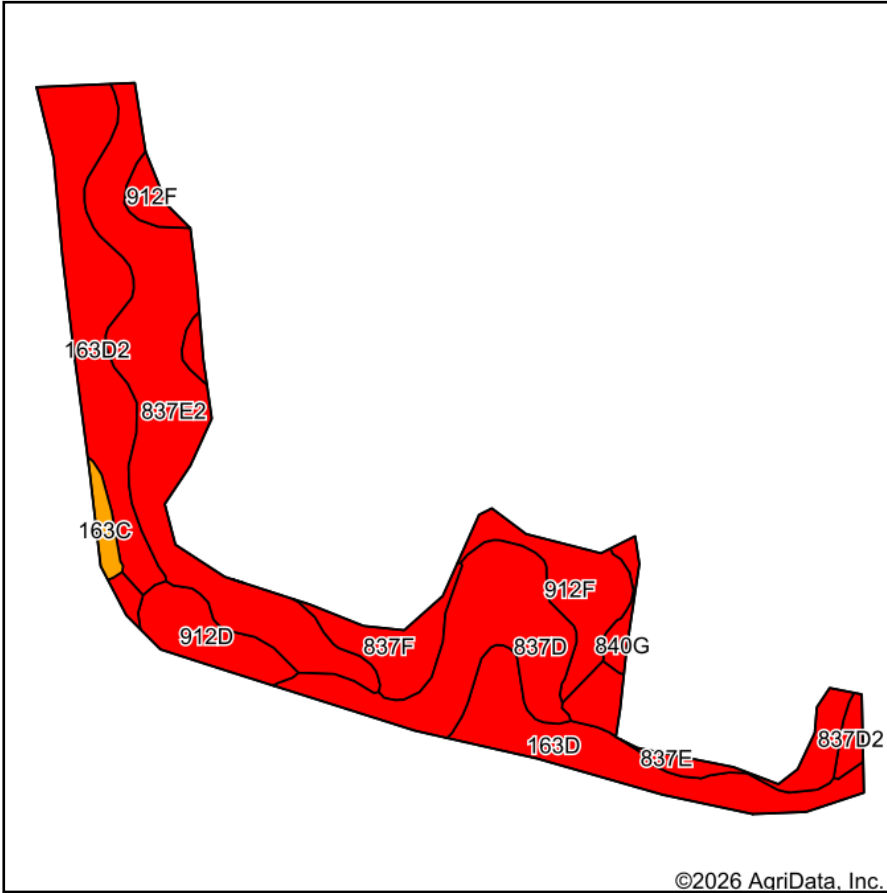
19-99N-3W
Allamakee County
Iowa



© AgriData, Inc. 2025 www.AgriDataInc.com

4/28/2026

Soils Map



State: **Iowa**
 County: **Allamakee**
 Location: **19-99N-3W**
 Township: **Lansing**
 Acres: **26.5**
 Date: **4/27/2026**



Maps Provided By:

 CUSTOMIZED ONLINE MAPPING
 © AgriData, Inc. 2025 www.AgriDataInc.com



Soils data provided by USDA and NRCS.

©2026 AgriData, Inc.

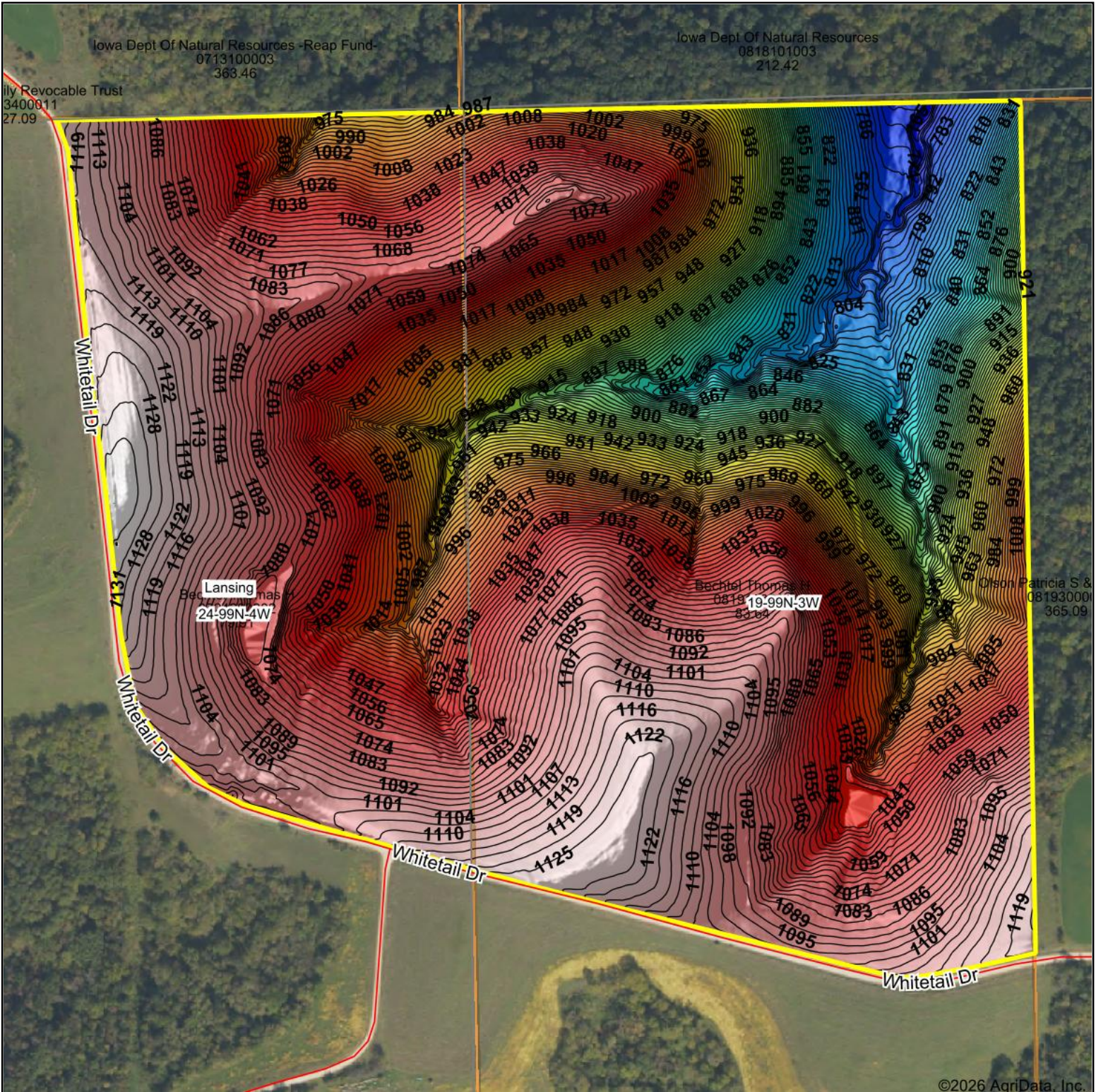
Area Symbol: IA005, Soil Area Version: 29

Code	Soil Description	Acres	Percent of field	CSR2 Legend	Restrictive Layer	Soil Drainage	Non-Irr Class *c	CSR2**	CSR	
837E2	Village silt loam, 14 to 18 percent slopes, moderately eroded	6.85	25.9%		> 6.5ft.	Well drained	IVe	27	13	
163D2	Fayette silt loam, 9 to 14 percent slopes, moderately eroded	4.37	16.5%		> 6.5ft.	Well drained	IIIe	46	58	
837D	Village silt loam, 9 to 14 percent slopes	4.28	16.2%		> 6.5ft.	Well drained	IIIs	43	33	
163D	Fayette silt loam, 9 to 14 percent slopes	3.19	12.0%		> 6.5ft.	Well drained	IIIe	49	60	
912F	Paintcreek silt loam, 18 to 30 percent slopes	2.47	9.3%		> 6.5ft.	Well drained	VIe	5	5	
837E	Village silt loam, 14 to 18 percent slopes	1.48	5.6%		> 6.5ft.	Well drained	IVe	30	18	
912D	Paintcreek silt loam, 9 to 14 percent slopes	1.47	5.5%		> 6.5ft.	Well drained	IVe	23	13	
837F	Village silt loam, 18 to 25 percent slopes	1.33	5.0%		> 6.5ft.	Well drained	VIe	12	5	
840G	Lacrescent silt loam, 25 to 70 percent slopes	0.38	1.4%		> 6.5ft.	Well drained	VIIe	5	5	
163C	Fayette silt loam, 5 to 9 percent slopes	0.37	1.4%		> 6.5ft.	Well drained	IIIe	75	70	
837D2	Village silt loam, 9 to 14 percent slopes, moderately eroded	0.31	1.2%		> 6.5ft.	Well drained	IIIe	40	28	
Weighted Average								3.86	33	29.3

**IA has updated the CSR values for each county to CSR2.

*c: Using Capabilities Class Dominant Condition Aggregation Method

Topography Hillshade



Source: USGS 1 meter dem

Interval(ft): 3

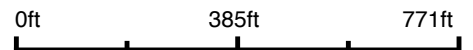
Min: 759.0

Max: 1,136.7

Range: 377.7

Average: 1,020.5

Standard Deviation: 91.31 ft



19-99N-3W
Allamakee County
Iowa

Boundary Center: 43° 22' 53.57, -91° 15' 6.45



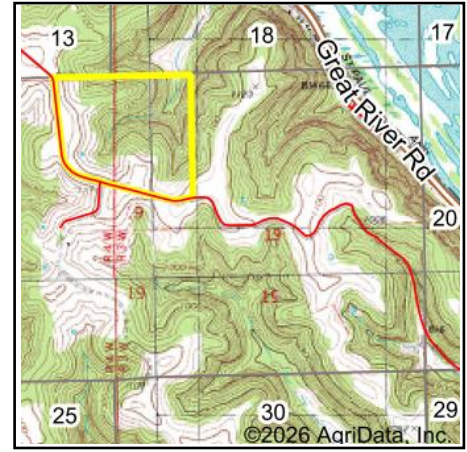
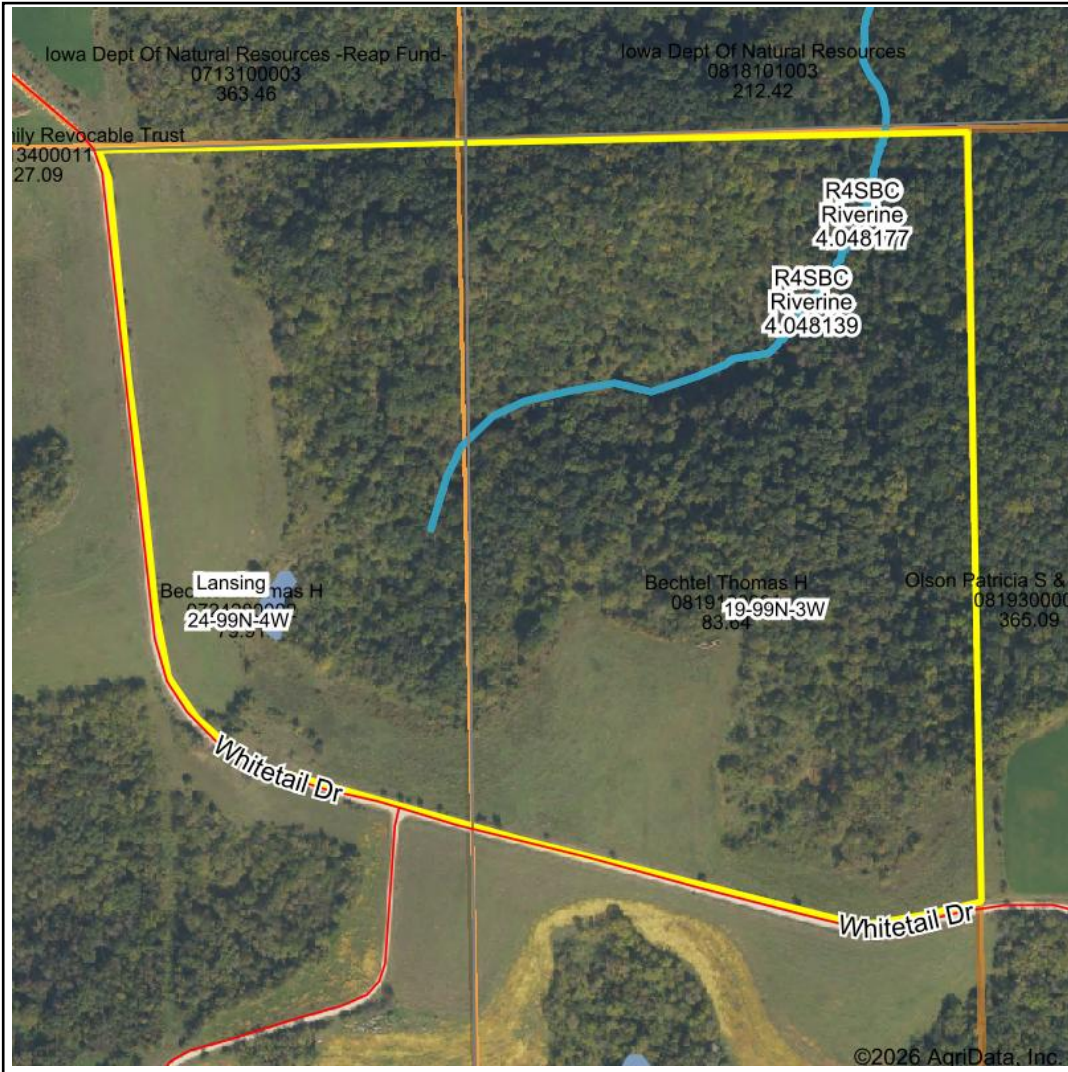
Maps Provided By:



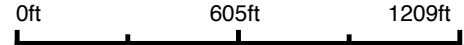
© AgriData, Inc. 2025

www.AgriDataInc.com

Wetlands Map



State: **Iowa**
 Location: **19-99N-3W**
 County: **Allamakee**
 Township: **Lansing**
 Date: **4/28/2026**



Classification Code	Type	Acres
R4SBC	Riverine	0.86
PUBFh	Freshwater Pond	0.24
Total Acres		1.10

Data Source: National Wetlands Inventory website. U.S. DoI, Fish and Wildlife Service, Washington, D.C. <http://www.fws.gov/wetlands/>