

Aerial Map



Boundary Center: 43° 22' 36.72, -91° 14' 11.14

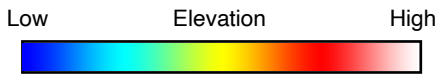
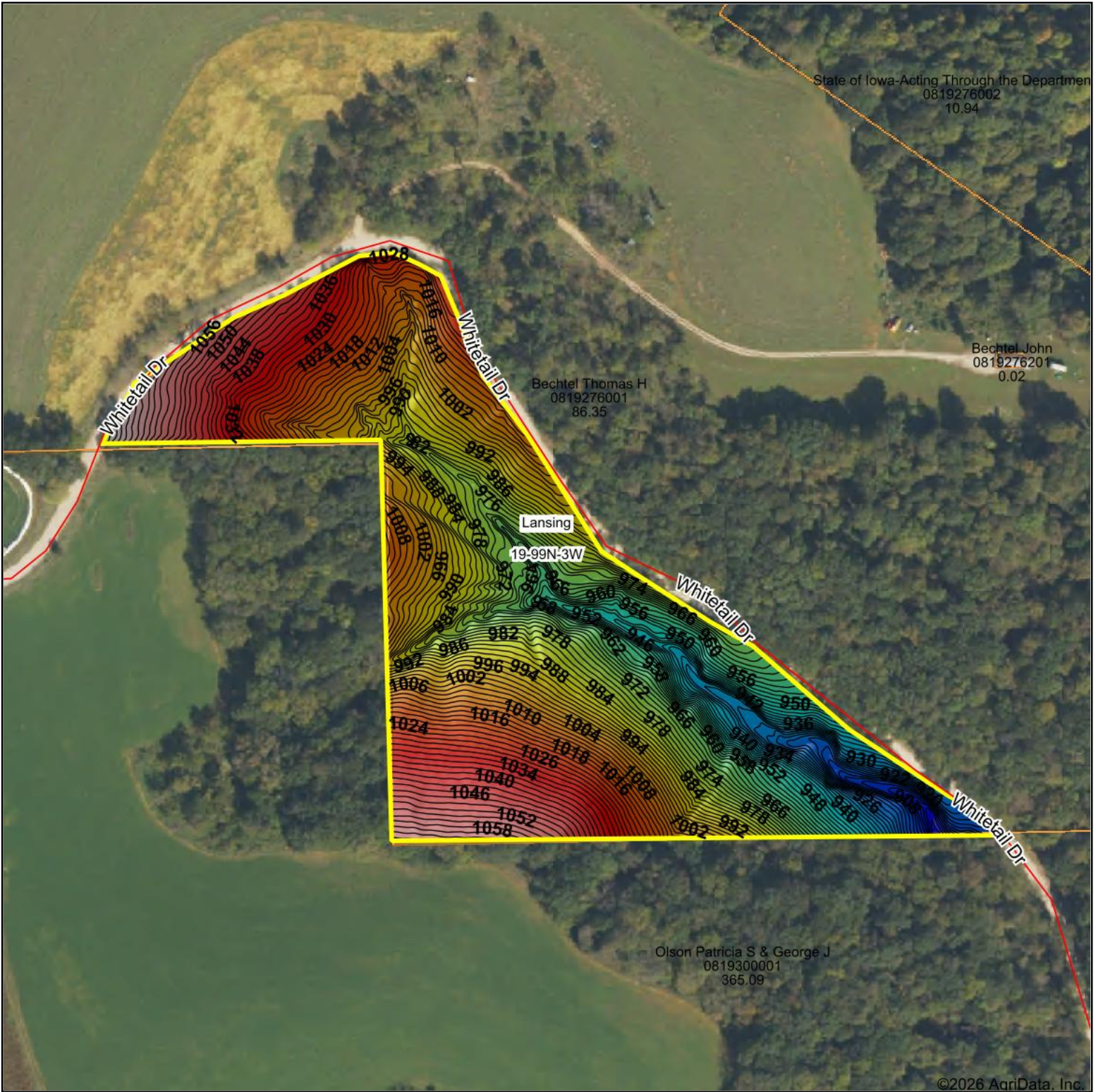


19-99N-3W
Allamakee County
Iowa



4/28/2026

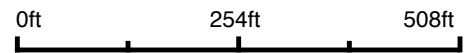
Topography Hillshade




HIGH POINT
 LAND COMPANY
 Maps Provided By:

surety
 CUSTOMIZED ONLINE MAPPING
 © AgriData, Inc. 2025 www.AgriDataInc.com

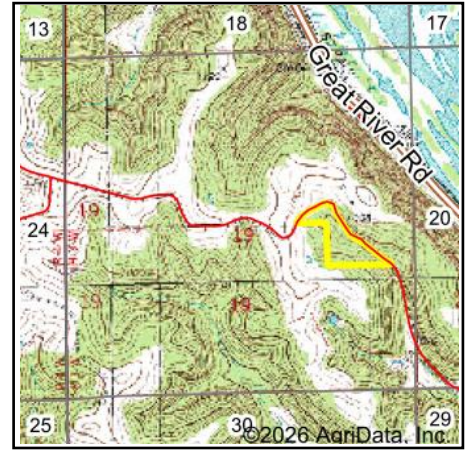
Source: USGS 1 meter dem
 Interval(ft): 2
 Min: 899.4
 Max: 1,078.1
 Range: 178.7
 Average: 995.2
 Standard Deviation: 36.02 ft



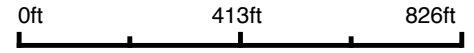
19-99N-3W
Allamakee County
Iowa

Boundary Center: 43° 22' 36.72, -91° 14' 11.14

Wetlands Map



State: **Iowa**
 Location: **19-99N-3W**
 County: **Allamakee**
 Township: **Lansing**
 Date: **4/28/2026**



Classification Code	Type	Acres
	Total Acres	0.00

Data Source: National Wetlands Inventory website. U.S. DoI, Fish and Wildlife Service, Washington, D.C. <http://www.fws.gov/wetlands/>