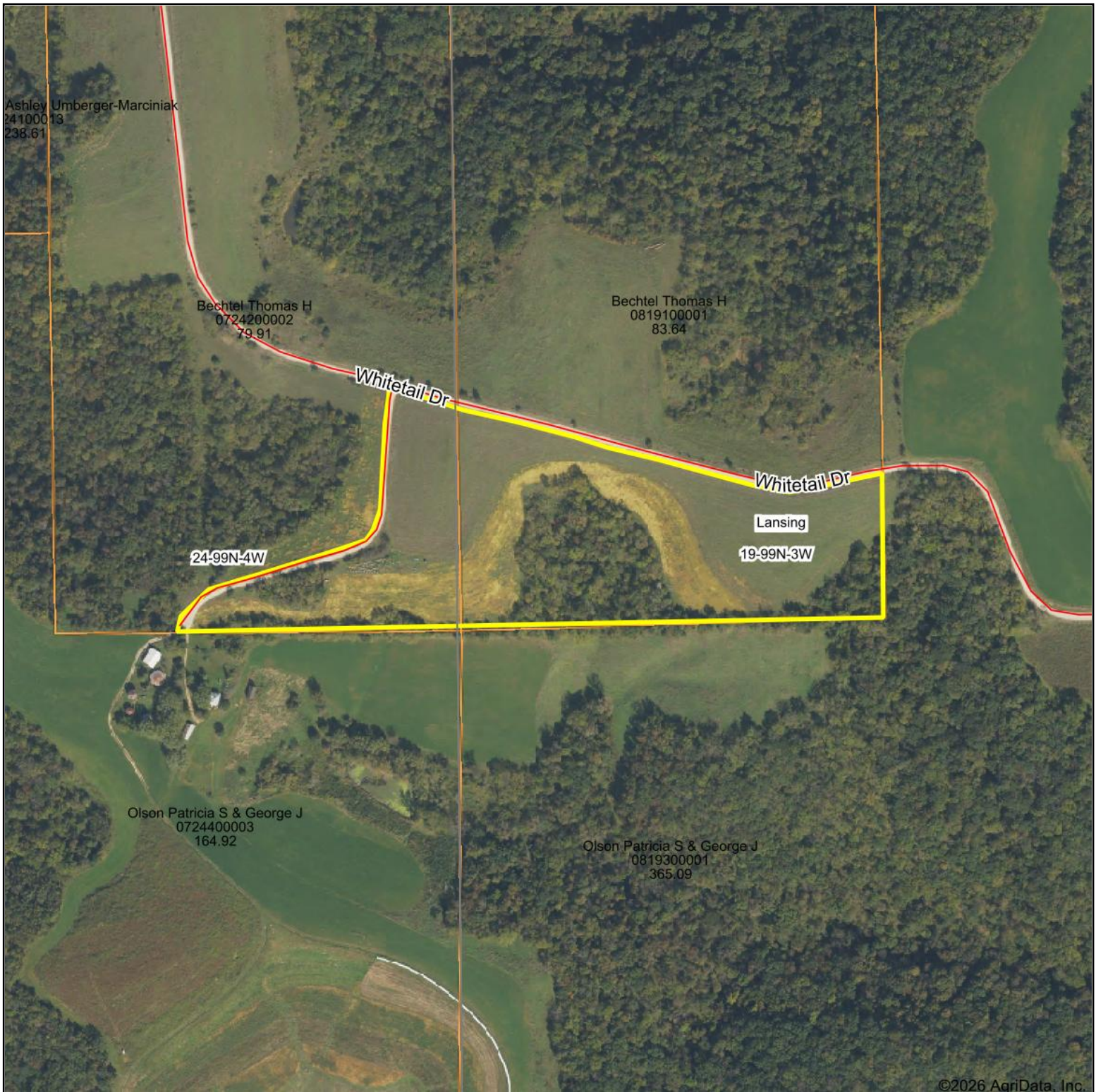
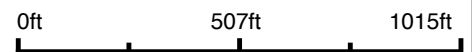


Aerial Map



©2026 AgriData, Inc.

Boundary Center: 43° 22' 42.27, -91° 15' 6.06



Maps Provided By:



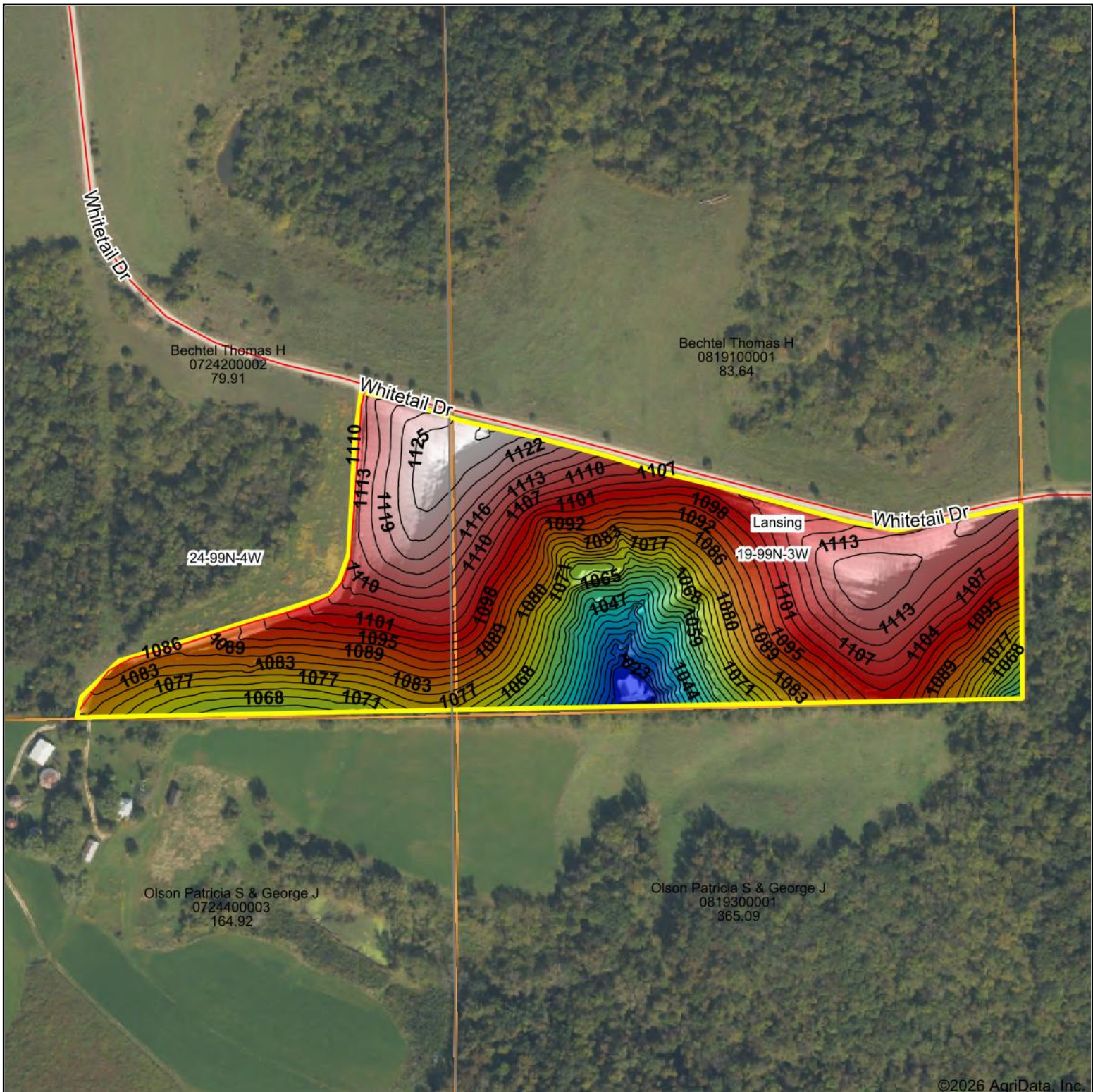
© AgriData, Inc. 2025 www.AgriDataInc.com

19-99N-3W
Allamakee County
Iowa



4/28/2026

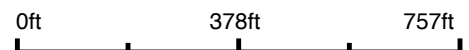
Topography Hillshade



©2026 AgriData, Inc.



Source: USGS 1 meter dem
 Interval(ft): 3
 Min: 1,014.7
 Max: 1,128.5
 Range: 113.8
 Average: 1,091.5
 Standard Deviation: 23.79 ft



19-99N-3W
Allamakee County
Iowa

Boundary Center: 43° 22' 42.27, -91° 15' 6.06



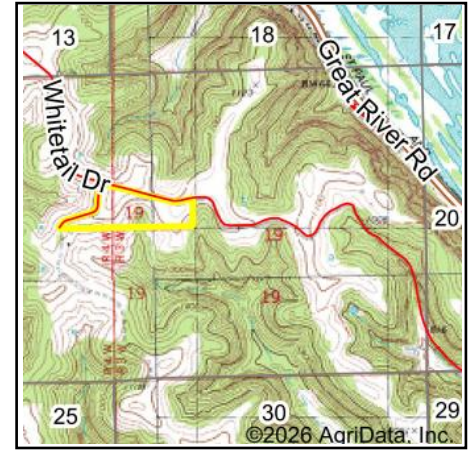
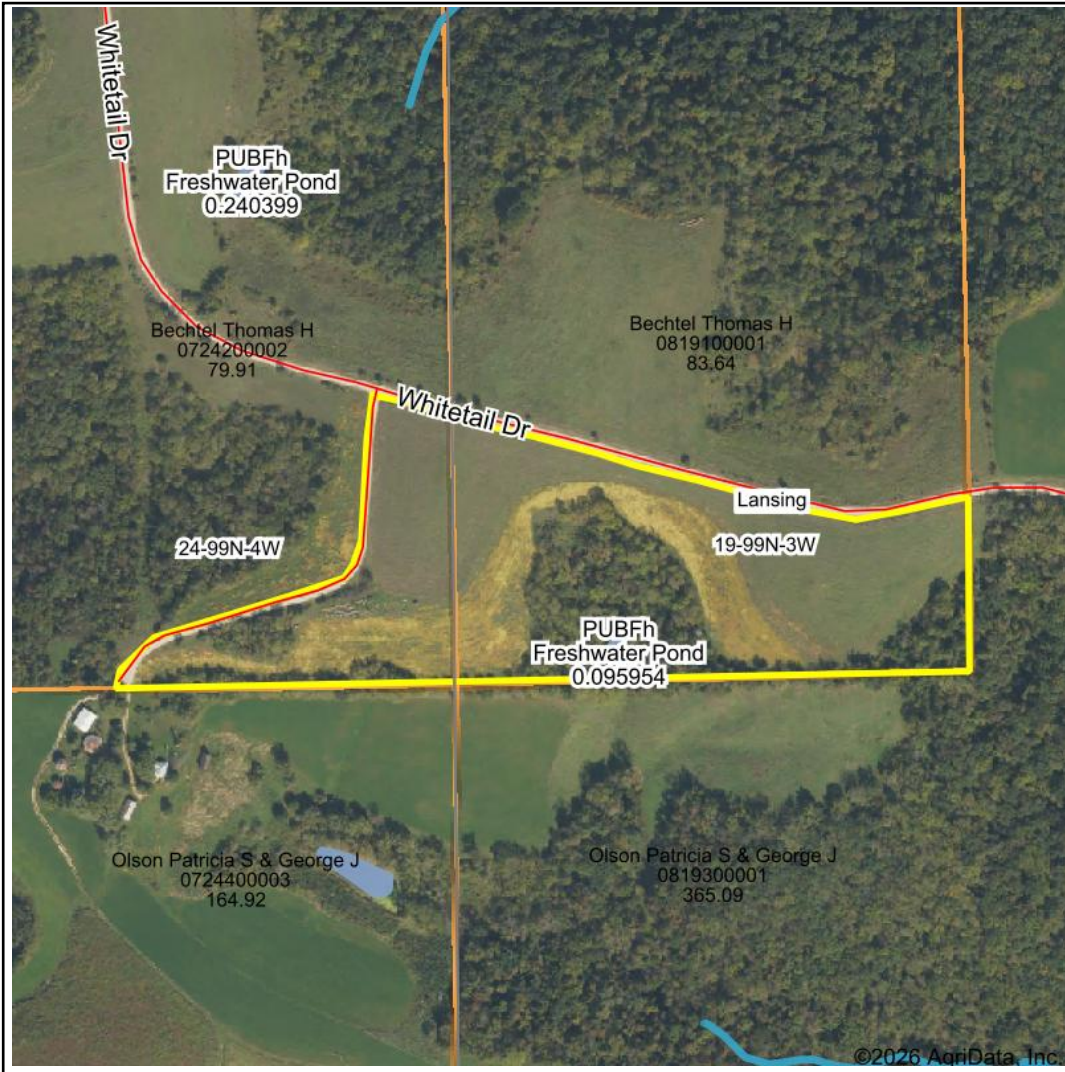
Maps Provided By:



© AgriData, Inc. 2025

www.AgriDataInc.com

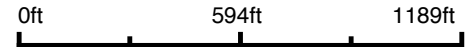
Wetlands Map



State: **Iowa**
 Location: **19-99N-3W**
 County: **Allamakee**
 Township: **Lansing**
 Date: **4/28/2026**



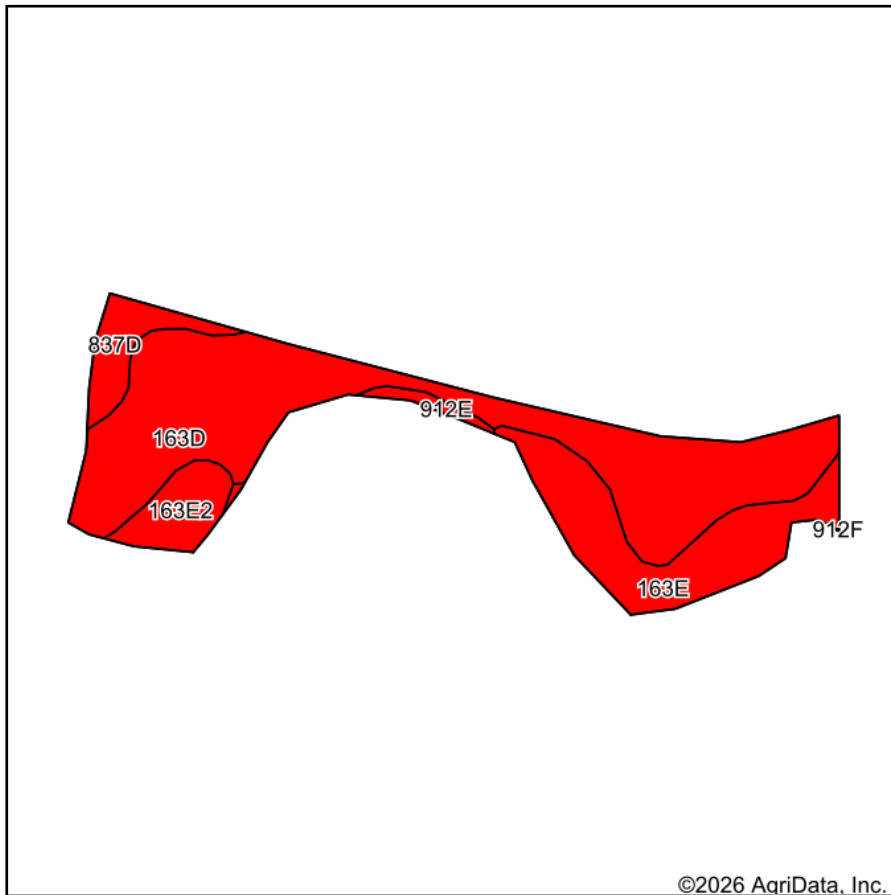
© AgriData, Inc. 2025 www.AgriDataInc.com



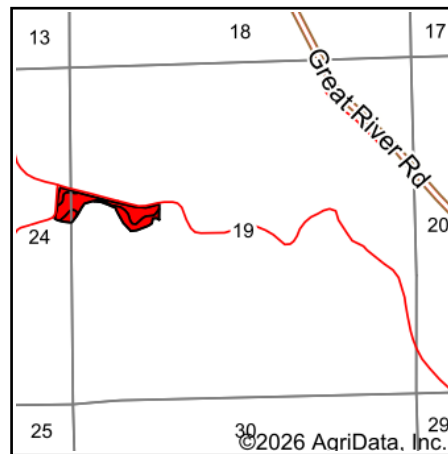
Classification Code	Type	Acres
PUBFh	Freshwater Pond	0.10
Total Acres		0.10

Data Source: National Wetlands Inventory website. U.S. DoI, Fish and Wildlife Service, Washington, D.C. <http://www.fws.gov/wetlands/>

Soils Map



Soils data provided by USDA and NRCS.



State: **Iowa**
 County: **Allamakee**
 Location: **19-99N-3W**
 Township: **Lansing**
 Acres: **9.62**
 Date: **4/27/2026**



Maps Provided By:



Area Symbol: IA005, Soil Area Version: 29

Code	Soil Description	Acres	Percent of field	CSR2 Legend	Restrictive Layer	Soil Drainage	Non-Irr Class *c	CSR2**	CSR	
163D	Fayette silt loam, 9 to 14 percent slopes	5.93	61.6%		> 6.5ft.	Well drained	IIIe	49	60	
163E	Fayette silt loam, 14 to 18 percent slopes	2.21	23.0%		> 6.5ft.	Well drained	IVe	38	50	
163E2	Fayette silt loam, 14 to 18 percent slopes, moderately eroded	0.68	7.1%		> 6.5ft.	Well drained	IVe	35	48	
837D	Village silt loam, 9 to 14 percent slopes	0.63	6.5%		> 6.5ft.	Well drained	IIIs	43	33	
912E	Paintcreek silt loam, 14 to 18 percent slopes	0.17	1.8%		> 6.5ft.	Well drained	VIe	10	10	
Weighted Average								3.35	44.4	54.2

**IA has updated the CSR values for each county to CSR2.

*c: Using Capabilities Class Dominant Condition Aggregation Method