

2024 Harvest: Soybeans

Field: hill

pat | northfield farm

Start: Oct 4, 2024 10:44 AM
End: Oct 4, 2024 4:07 PM

Operator Name: PATRICK WALSKE

Work Totals

Area Harvested: 52.8 ac
Total Yield: 2,666 bu
Wet Weight: 3,032.9 lb/ac
Elevation: 1,033.9 ft

Yield: 51 bu/ac
Moisture: 9.6 %
Total Wet Weight: 160,025 lb

Performance

Harvest Time: 3 hr 39 min
Productivity: 13.6 ac/hr
Throughput (Dry): 734 bu/hr
Fuel Efficiency: 42.1 bu/gal
Fuel Rate (Time): 17.4 gal/hr

Speed: 3.9 mi/hr
Total Fuel: 63.7 gal
Throughput (Wet): 44,079.2 lb/hr
Fuel Rate (Area): 1.2 gal/ac

Map: Yield



Equipment

Walske (6) S780 811259 1H0S780SHLT811259

Varieties

--- CP1522

2022 Harvest: Soybeans

Field: hill

pat | northfield farm

Start: Oct 9, 2022 2:42 PM
End: Oct 9, 2022 7:48 PM

Operator Name: PATRICK WALSKE

Work Totals

Area Harvested: 56.2 ac
Total Yield: 2,715 bu
Wet Weight: 2,916.9 lb/ac
Elevation: 1,033.1 ft

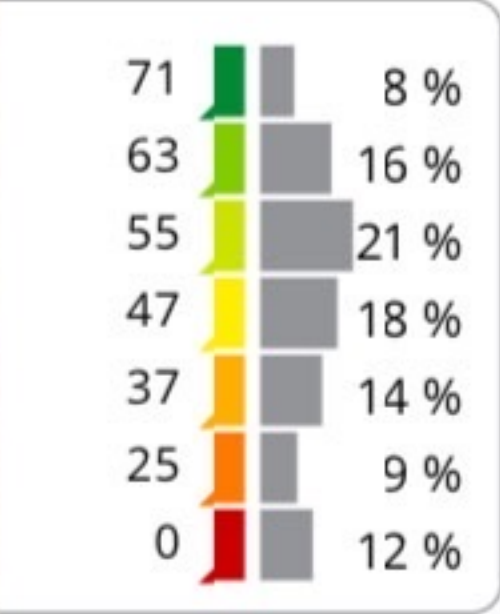
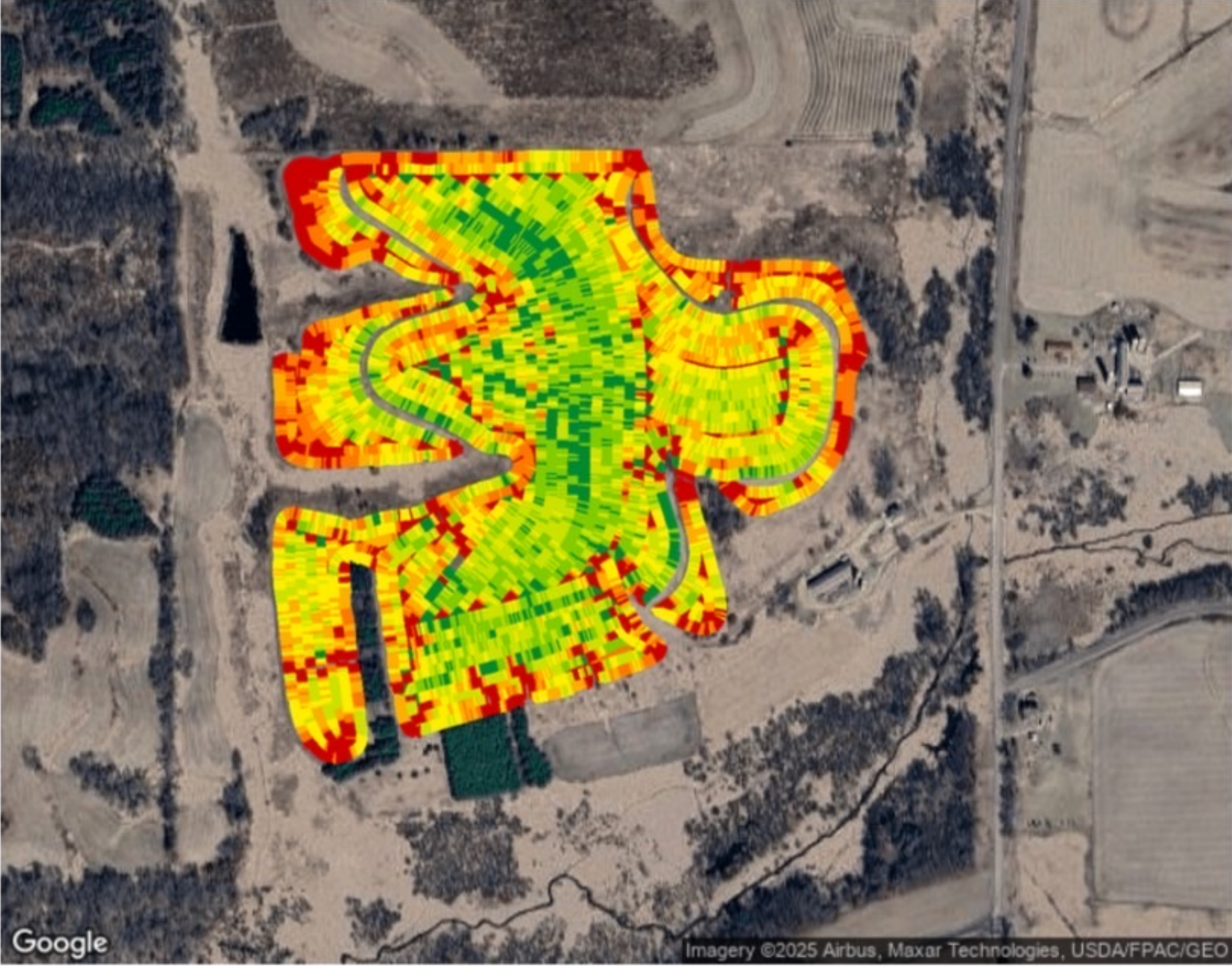
Yield: 48 bu/ac
Moisture: 13.1 %
Total Wet Weight: 163,835 lb

Performance

Harvest Time: 4 hr 18 min
Productivity: 13 ac/hr
Throughput (Dry): 630 bu/hr
Fuel Efficiency: 37.8 bu/gal
Fuel Rate (Time): 16.7 gal/hr

Speed: 3.7 mi/hr
Total Fuel: 71.7 gal
Throughput (Wet): 38,035.2 lb/hr
Fuel Rate (Area): 1.3 gal/ac

Map: Yield



Equipment

Walske (6) S680 0747786 1H0S680SCC0747786

Varieties

P12T94E
Brand Name: Pioneer

2021 Harvest: Corn

Field: hill

pat | northfield farm

Start: Nov 2, 2021 11:40 AM
End: Nov 2, 2021 5:55 PM

Operator Name: PATRICK WALSKE

Work Totals

Area Harvested: 52.1 ac
Total Yield: 10,563 bu
Wet Weight: 11,884.9 lb/ac
Elevation: 1,028.6 ft

Yield: 203 bu/ac
Moisture: 18.4 %
Total Wet Weight: 619,475 lb

Performance

Harvest Time: 5 hr 31 min
Productivity: 9.4 ac/hr
Throughput (Dry): 1,912 bu/hr
Fuel Efficiency: 111.4 bu/gal
Fuel Rate (Time): 17.2 gal/hr

Speed: 3.2 mi/hr
Total Fuel: 94.8 gal
Throughput (Wet): 112,148.1 lb/hr
Fuel Rate (Area): 1.8 gal/ac

Map: Yield



Equipment

Walske (6) S680 0747786 1H0S680SCC0747786

Varieties

DKC47-27RIB
Brand Name: Dekalb

2024 Harvest: Soybeans

Field: above road

pat | northfield farm

Start: Oct 3, 2024 7:03 PM
End: Oct 3, 2024 9:36 PM

Operator Name: PATRICK WALSKE

Work Totals

Area Harvested: 20.8 ac
Total Yield: 1,019 bu
Wet Weight: 2,944.8 lb/ac
Elevation: 1,009 ft

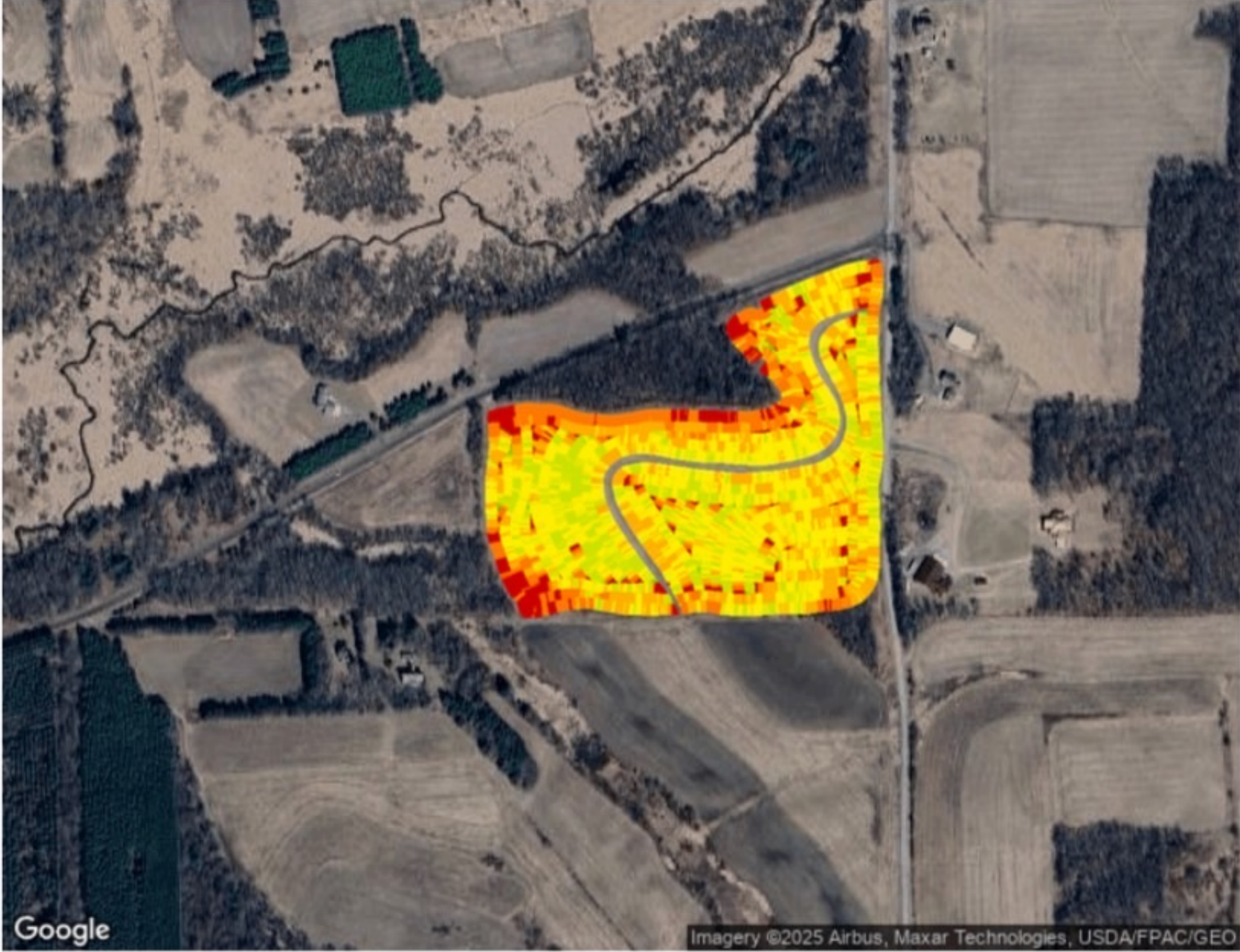
Yield: 49 bu/ac
Moisture: 9.6 %
Total Wet Weight: 61,154 lb

Performance

Harvest Time: 1 hr 35 min
Productivity: 13.4 ac/hr
Throughput (Dry): 643 bu/hr
Fuel Efficiency: 38.1 bu/gal
Fuel Rate (Time): 16.9 gal/hr

Speed: 3.6 mi/hr
Total Fuel: 26.9 gal
Throughput (Wet): 38,599.5 lb/hr
Fuel Rate (Area): 1.3 gal/ac

Map: Yield



Equipment

Walske (6) S780 811259 1H0S780SHLT811259

Varieties

--- CP1522
P11T36E

2021 Harvest: Corn

Field: above road

pat | northfield farm

Start: Nov 2, 2021 9:00 AM
End: Nov 2, 2021 11:17 AM

Operator Name: PATRICK WALSKE

Work Totals

Area Harvested: 20.5 ac
Total Yield: 3,899 bu
Wet Weight: 11,107.8 lb/ac
Elevation: 1,004.6 ft

Yield: 190 bu/ac
Moisture: 18.1 %
Total Wet Weight: 228,152 lb

Performance

Harvest Time: 2 hr 2 min
Productivity: 10.1 ac/hr
Throughput (Dry): 1,916 bu/hr
Fuel Efficiency: 107.5 bu/gal
Fuel Rate (Time): 17.8 gal/hr

Speed: 3.2 mi/hr
Total Fuel: 36.3 gal
Throughput (Wet): 112,134.1 lb/hr
Fuel Rate (Area): 1.8 gal/ac

Map: Yield



Equipment

Walske (6) S680 0747786 1H0S680SCC0747786

Varieties

DKC47-27RIB
Brand Name: Dekalb

2023 Harvest: Corn

Field: above road
pat | northfield farm
Start: Nov 1, 2023 4:29 PM
End: Nov 1, 2023 7:12 PM



Work Totals

Area Harvested: 20.1 ac
Total Yield: 3,913 bu
Wet Weight: 11,752.7 lb/ac
Elevation: 1,009 ft

Yield: 195 bu/ac
Moisture: 21.2 %
Total Wet Weight: 236,242 lb

Performance

Harvest Time: 1 hr 46 min
Productivity: 11.2 ac/hr
Throughput (Dry): 2,106 bu/hr
Fuel Efficiency: 105.8 bu/gal
Fuel Rate (Time): 19.9 gal/hr

Speed: 3.5 mi/hr
Total Fuel: 35.2 gal
Throughput (Wet): 127,169.6 lb/hr
Fuel Rate (Area): 1.8 gal/ac

Map: Yield



Equipment

Walske (6) S780 811259 1H0S780SHLT811259

Varieties

P9624AM

2022 Harvest: Soybeans

Field: above road

pat | northfield farm

Start: Oct 5, 2022 2:00 PM
End: Oct 5, 2022 4:09 PM



Operator Name: PATRICK WALSKE

Work Totals

Area Harvested: 20.7 ac
Total Yield: 916 bu
Wet Weight: 2,715.1 lb/ac
Elevation: 1,009.3 ft

Yield: 44 bu/ac
Moisture: 14.9 %
Total Wet Weight: 56,286 lb

Performance

Harvest Time: 1 hr 56 min
Productivity: 10.6 ac/hr
Throughput (Dry): 470 bu/hr
Fuel Efficiency: 27.9 bu/gal
Fuel Rate (Time): 16.8 gal/hr

Speed: 3.2 mi/hr
Total Fuel: 32.8 gal
Throughput (Wet): 28,901.8 lb/hr
Fuel Rate (Area): 1.6 gal/ac

Map: Yield



Equipment

Walske (6) S680 0747786 1H0S680SCC0747786

Varieties

P12T94E
Brand Name: Pioneer

P13T47E
Brand Name: Pioneer



Google



2023 Harvest: Corn

Field: hill
pat | northfield farm
Start: Nov 13, 2023 8:32 AM
End: Nov 13, 2023 6:00 PM



Work Totals

Area Harvested: 53.4 ac
Total Yield: 11,160 bu
Wet Weight: 12,487.6 lb/ac
Elevation: 1,032.5 ft

Yield: 209 bu/ac
Moisture: 20.3 %
Total Wet Weight: 666,636 lb

Performance

Harvest Time: 4 hr 41 min
Productivity: 11.8 ac/hr
Throughput (Dry): 2,291 bu/hr
Fuel Efficiency: 114.2 bu/gal
Fuel Rate (Time): 20.1 gal/hr

Speed: 3.5 mi/hr
Total Fuel: 94.3 gal
Throughput (Wet): 136,837.6 lb/hr
Fuel Rate (Area): 1.8 gal/ac

Map: Yield



Equipment

Walske (6) S780 811259 1H0S780SHLT811259

Varieties

CP3735VT2

P9624AM