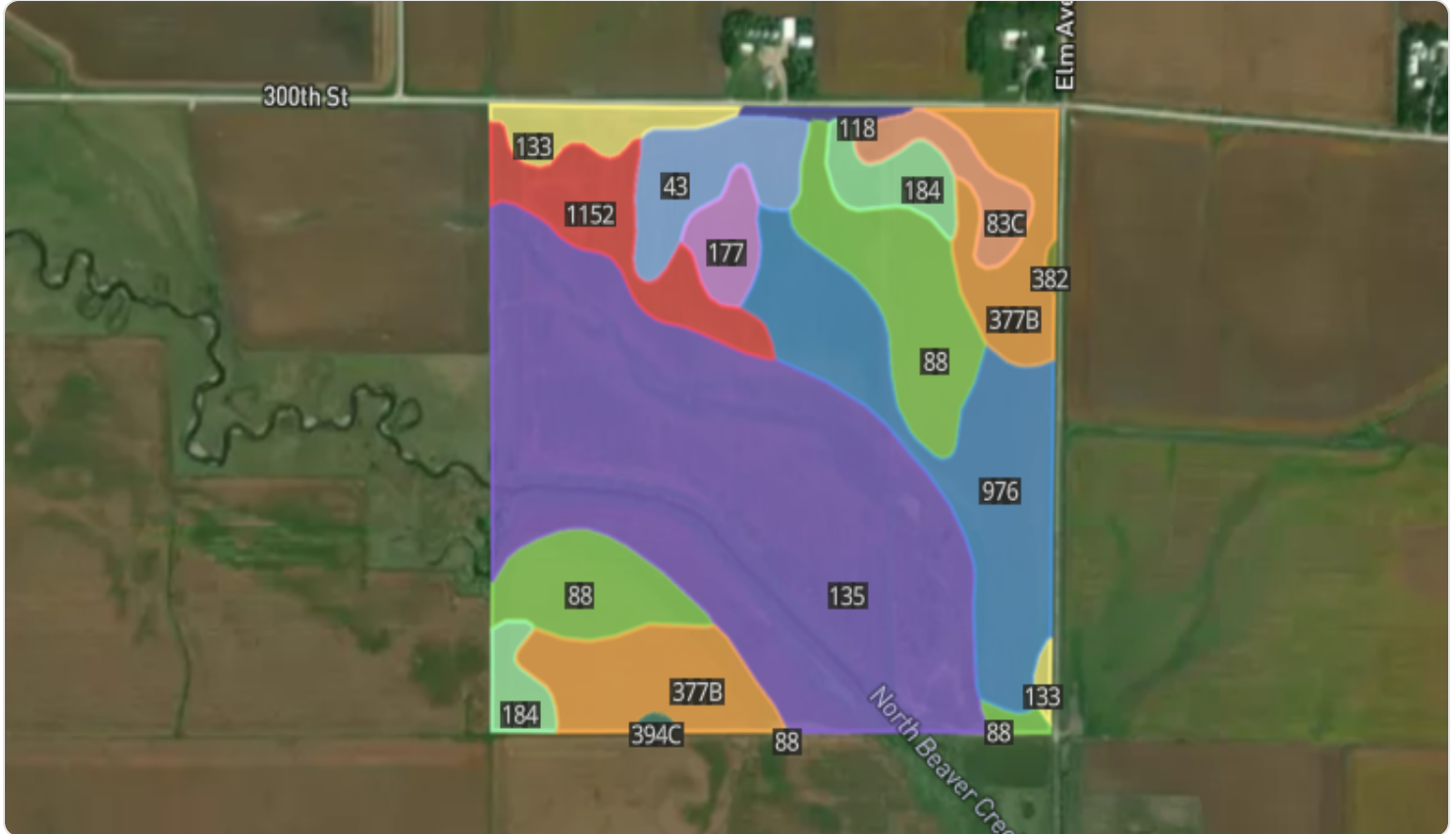


Soil Map



Soil Code	Soil Description	% of Map	Acres	CSR2
135	Coland clay loam, 0 to 2 percent slopes, occasionally flooded	41.31%	65.28	65
976	Raddle silt loam, 0 to 2 percent slopes	13.52%	21.36	97
88	Nevin silty clay loam, 0 to 2 percent slopes	12.30%	19.43	95
377B	Dinsdale silty clay loam, 2 to 5 percent slopes	11.16%	17.64	94
1152	Marshan clay loam, 0 to 2 percent slopes, rarely flooded	5.41%	8.55	54
43	Bremer silty clay loam, 0 to 2 percent slopes, rarely flooded	4.58%	7.24	79
184	Klinger silty clay loam, 1 to 4 percent slopes	3.77%	5.95	95
133	Colo silty clay loam, 0 to 2 percent slopes, occasionally flooded	2.68%	4.24	78
83C	Kenyon loam, 5 to 9 percent slopes	2.49%	3.93	85
	4 other soils	2.79%	4.40	87
Total			158.02	78.4

All data courtesy SSURGO database distributed by the U.S. NRCS.