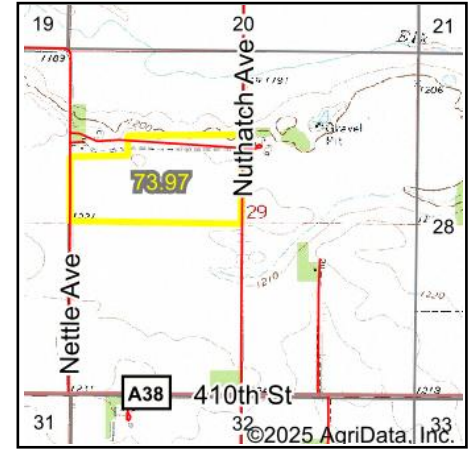


Wetlands Map



State: **Iowa**
 Location: **29-99N-20W**
 County: **Worth**
 Township: **Kensett**
 Date: **6/24/2025**

HIGH POINT
 LAND COMPANY
 Maps Provided By:
surety
 CUSTOMIZED ONLINE MAPPING
 © AgriData, Inc. 2023 www.AgriDataInc.com



0ft 666ft 1332ft

Classification Code	Type	Acres
	Total Acres	0.00

Data Source: National Wetlands Inventory website. U.S. DoI, Fish and Wildlife Service, Washington, D.C. <http://www.fws.gov/wetlands/>