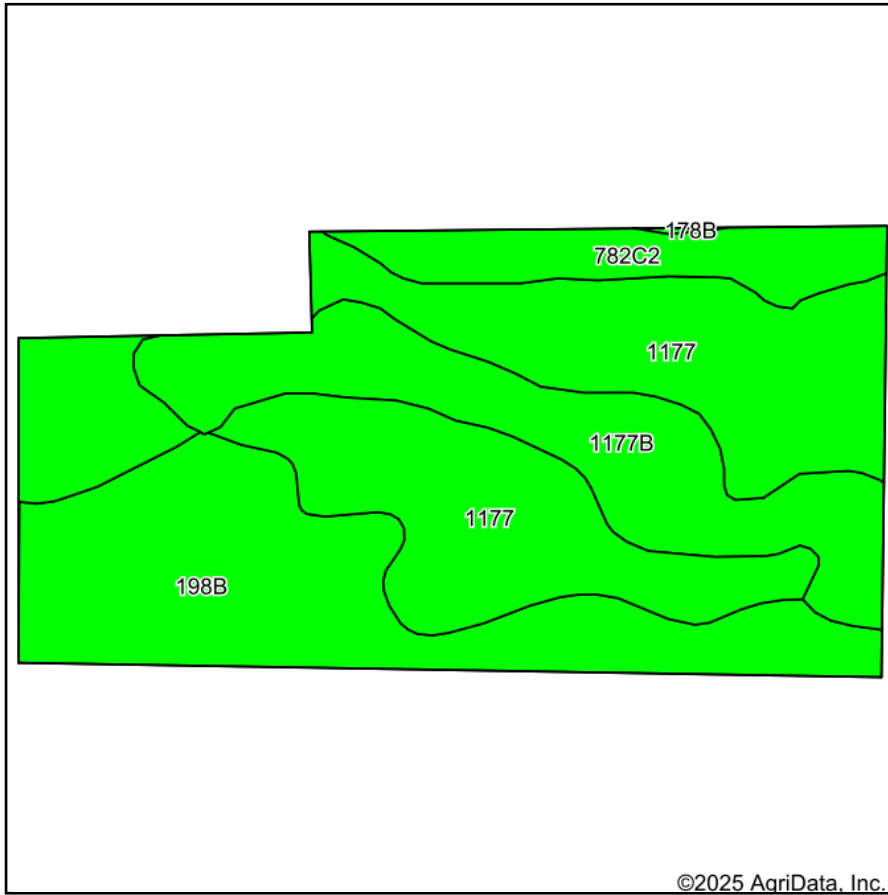
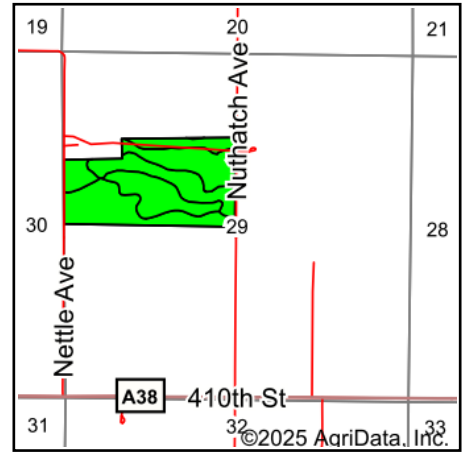


# Soils Map



Soils data provided by USDA and NRCS.



State: **Iowa**  
 County: **Worth**  
 Location: **29-99N-20W**  
 Township: **Kensett**  
 Acres: **73.97**  
 Date: **6/24/2025**



Maps Provided By:



© AgriData, Inc. 2023

www.AgriDataInc.com



Area Symbol: IA195, Soil Area Version: 28

Code	Soil Description	Acres	Percent of field	CSR2 Legend	Non-Irr Class *c	CSR2**	CSR	Bromegrass alfalfa AUM	Bromegrass alfalfa hay Tons	Corn Bu	Kentucky bluegrass AUM	Oats Bu	Smooth bromegrass AUM	Soybeans Bu	*n NCCPI Overall
1177	Saupe loam, 0 to 2 percent slopes	32.48	43.8%		lls	60									79
198B	Floyd loam, 1 to 4 percent slopes	20.92	28.3%		llw	89									88
1177B	Saupe loam, 2 to 5 percent slopes	14.54	19.7%		lls	55									77
782C2	Donnan silt loam, 5 to 9 percent slopes, moderately eroded	5.96	8.1%		llle	38	30	5.9	3.5	135	2.4	54	4.1	39	71
178B	Waukee loam, 2 to 5 percent slopes, rarely flooded	0.07	0.1%		lls	64	74								82
Weighted Average					2.08	65.5	*-	0.5	0.3	10.9	0.2	4.4	0.3	3.1	*n 80.5

\*\*IA has updated the CSR values for each county to CSR2.

\*- CSR weighted average cannot be calculated on the current soils data, use prior data version for csr values.

\*n: The aggregation method is "Weighted Average using all components"

\*c: Using Capabilities Class Dominant Condition Aggregation Method

Soils data provided by USDA and NRCS.