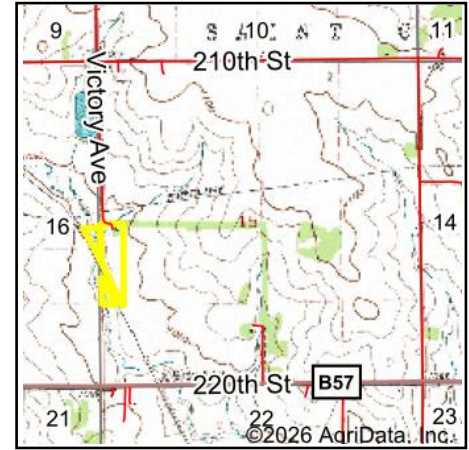
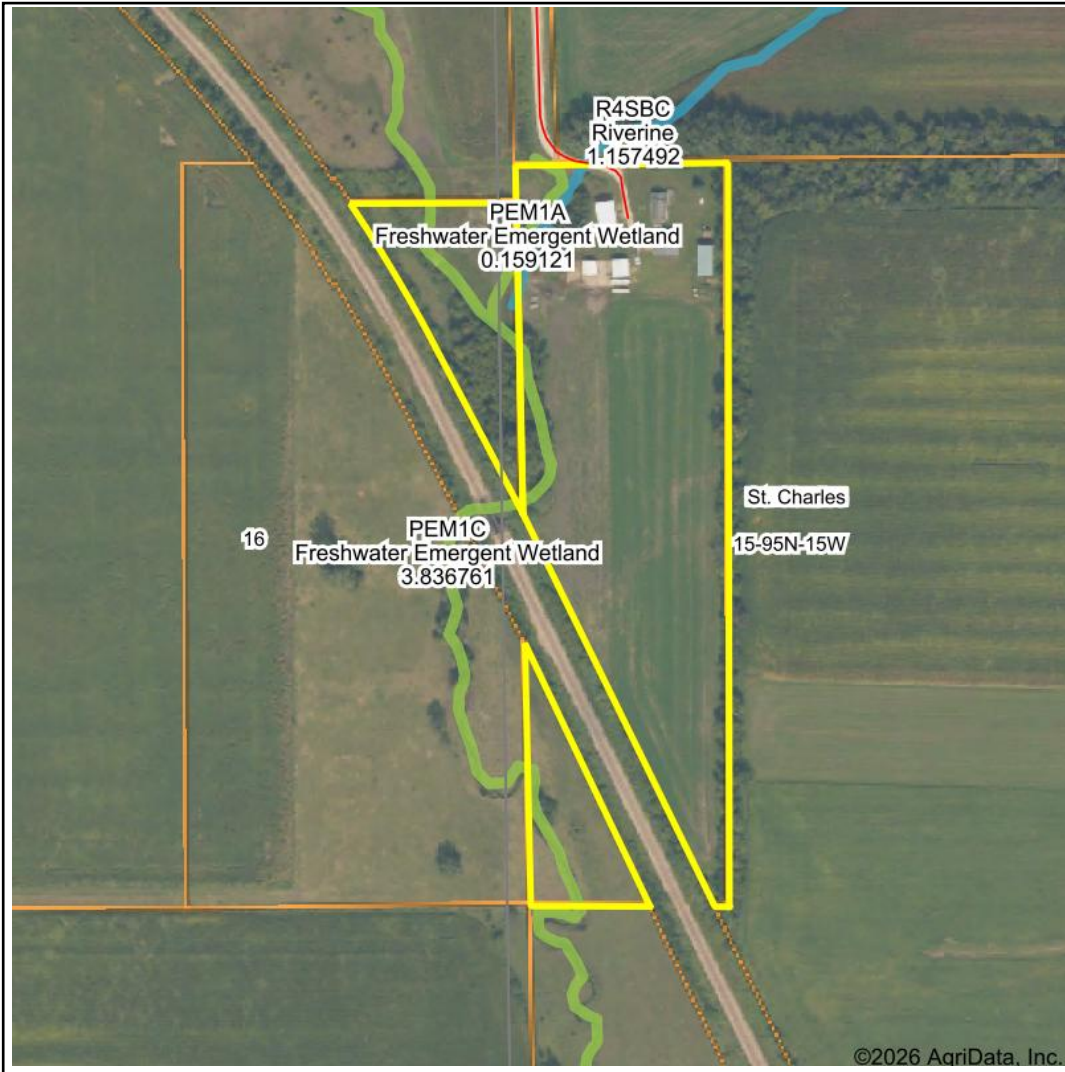


Wetlands Map



State: Iowa
Location: 15-95N-15W
County: Floyd
Township: St. Charles
Date: 5/20/2026



Maps Provided By:



© AgriData, Inc. 2025 www.AgriDataInc.com



0ft 396ft 792ft

Classification Code	Type	Acres
PEM1C	Freshwater Emergent Wetland	0.42
PEM1A	Freshwater Emergent Wetland	0.14
R4SBC	Riverine	0.13
Total Acres		0.69

Data Source: National Wetlands Inventory website. U.S. DoI, Fish and Wildlife Service, Washington, D.C. <http://www.fws.gov/wetlands/>