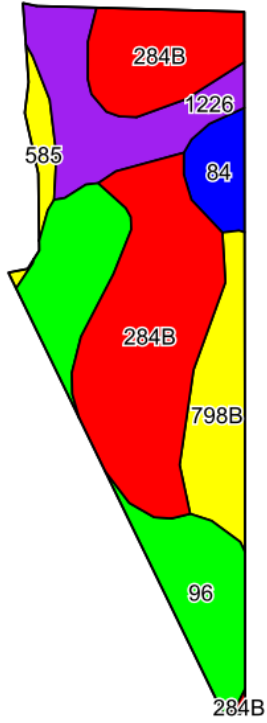
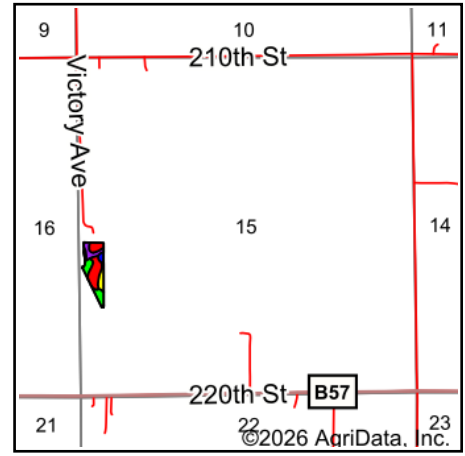


Soils Map



©2026 AgriData, Inc.

Soils data provided by USDA and NRCS.



State: **Iowa**
 County: **Floyd**
 Location: **15-95N-15W**
 Township: **St. Charles**
 Acres: **5.47**
 Date: **5/20/2026**



Maps Provided By:



© AgriData, Inc. 2025

www.AgriDataInc.com



Area Symbol: IA067, Soil Area Version: 31

Code	Soil Description	Acres	Percent of field	CSR2 Legend	Restrictive Layer	Soil Drainage	Non-Irr Class *c	CSR2**
284B	Flagler sandy loam, 2 to 5 percent slopes	2.33	42.6%	 	> 6.5ft.	Somewhat excessively drained	Ille	49
96	Turlin loam, 0 to 2 percent slopes	1.25	22.9%	 	> 6.5ft.	Somewhat poorly drained	Ilw	94
1226	Lawler loam, 0 to 2 percent slopes, rarely flooded	0.80	14.6%	 	> 6.5ft.	Somewhat poorly drained	Ils	59
798B	Protivin loam, 1 to 4 percent slopes	0.65	11.9%	 	> 6.5ft.	Somewhat poorly drained	Ile	61
84	Clyde silty clay loam, 0 to 3 percent slopes	0.28	5.1%	 	> 6.5ft.	Poorly drained	Ilw	88
585	Coland-Spillville complex, 0 to 2 percent slopes, occasionally flooded	0.16	2.9%	 	> 6.5ft.	Poorly drained	Ilw	70
Weighted Average							2.43	64.8

**IA has updated the CSR values for each county to CSR2.

*c: Using Capabilities Class Dominant Condition Aggregation Method

Soils data provided by USDA and NRCS.