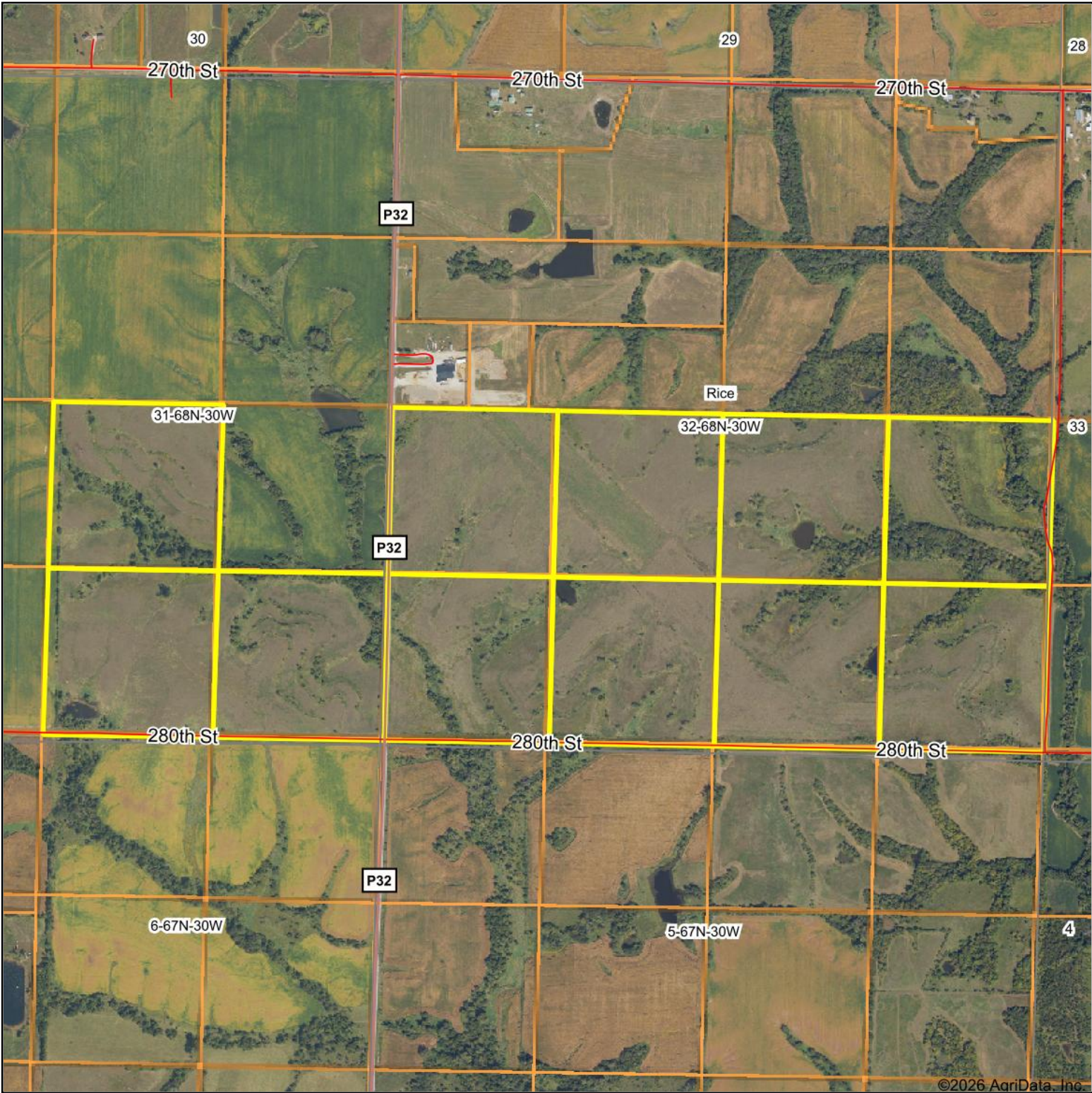
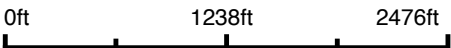


# Aerial Map



©2026 AgriData, Inc.

Boundary Center: 40° 38' 33.87, -94° 19' 58.89



**32-68N-30W**  
**Ringgold County**  
**Iowa**



Maps Provided By:  
**surety**  
CUSTOMIZED ONLINE MAPPING  
© AgriData, Inc. 2025      www.AgriDataInc.com

4/3/2026

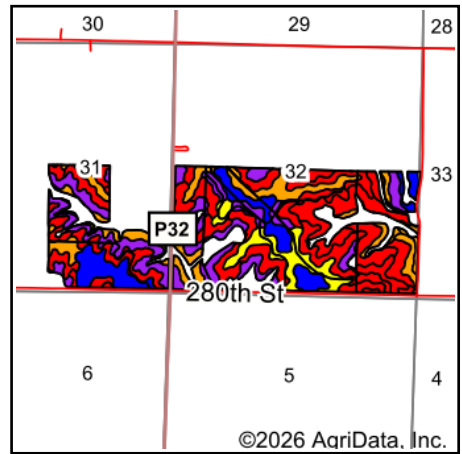
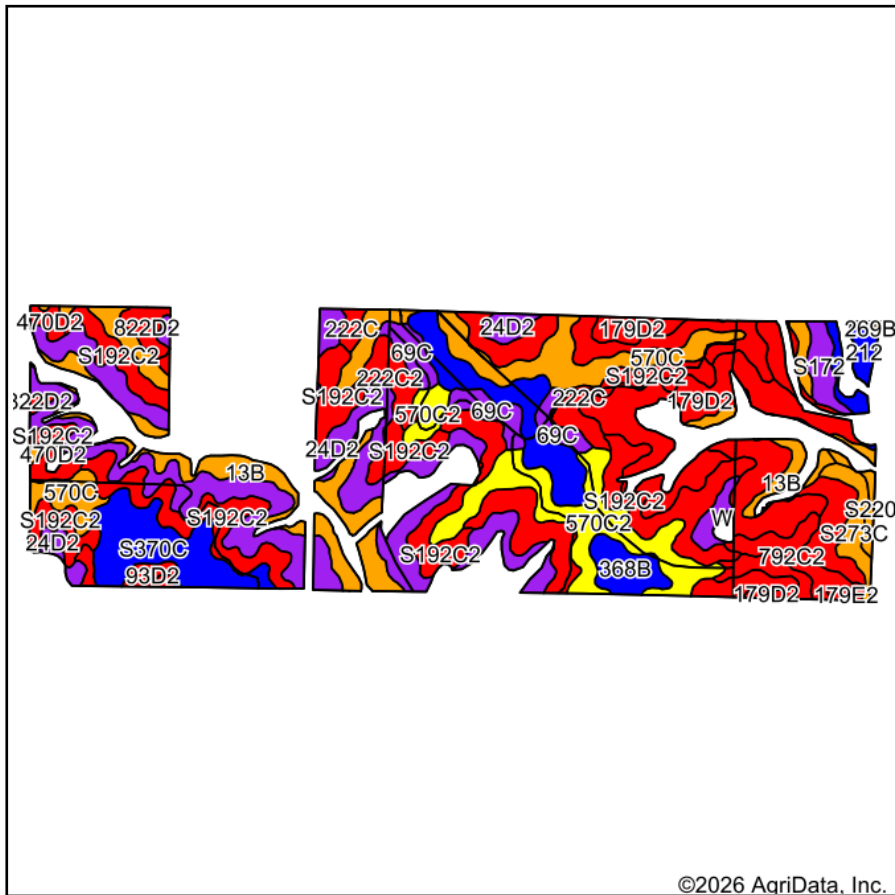
Maps Provided By:



© AgriData, Inc. 2025

[www.AgriDataInc.com](http://www.AgriDataInc.com)

# Soils Map



State: **Iowa**  
 County: **Ringgold**  
 Location: **32-68N-30W**  
 Township: **Rice**  
 Acres: **365.98**  
 Date: **4/27/2026**



Maps Provided By:



Soils data provided by USDA and NRCS.

Area Symbol: IA159, Soil Area Version: 31

Code	Soil Description	Acres	Percent of field	CSR2 Legend	Restrictive Layer	Soil Drainage	Non-Irr Class *c	CSR2**	CSR
24D2	Shelby clay loam, 9 to 14 percent slopes, moderately eroded	59.28	16.3%		> 6.5ft.	Well drained	IIIe	51	48
S192C2	Adair clay loam, heavy till, 5 to 9 percent slopes, moderately eroded	55.38	15.1%		> 6.5ft.	Somewhat poorly drained	IIIe	29	
570C	Nira silty clay loam, 5 to 9 percent slopes	28.15	7.7%		> 6.5ft.	Moderately well drained	IIIe	72	69
179D2	Gara loam, 9 to 14 percent slopes, moderately eroded	27.88	7.6%		> 6.5ft.	Well drained	IVe	38	43
570C2	Nira silty clay loam, 5 to 9 percent slopes, moderately eroded	25.36	6.9%		> 6.5ft.	Moderately well drained	IIIe	68	64
13B	Olmitz-Zook-Humeston complex, 0 to 5 percent slopes	22.32	6.1%		> 6.5ft.	Poorly drained	IIw	78	59
368B	Macksburg silty clay loam, 2 to 5 percent slopes	20.51	5.6%		> 6.5ft.	Somewhat poorly drained	Ile	89	90
S370C	Sharpsburg silty clay loam, loess hill, 5 to 9 percent slopes	17.55	4.8%		> 6.5ft.	Moderately well drained	IIIe	84	
179E2	Gara loam, 14 to 18 percent slopes, moderately eroded	11.25	3.1%		> 6.5ft.	Well drained	VIe	24	33
69C	Clearfield silty clay loam, dissected till plain, 5 to 9 percent slopes	10.31	2.8%		> 6.5ft.	Poorly drained	IIIw	59	50
S192D2	Adair clay loam, heavy till, 9 to 14 percent slopes, moderately eroded	9.92	2.7%		> 6.5ft.	Somewhat poorly drained	IVe	9	
792C2	Armstrong clay loam, 5 to 9 percent slopes, moderately eroded	9.41	2.6%		> 6.5ft.	Somewhat poorly drained	IIIe	24	27
222C	Clarinda silty clay loam, 5 to 9 percent slopes	8.88	2.4%		0.9ft. (Abrupt textural change)	Poorly drained	IVw	31	30

Soils data provided by USDA and NRCS.



Code	Soil Description	Acres	Percent of field	CSR2 Legend	Restrictive Layer	Soil Drainage	Non-Irr Class *c	CSR2**	CSR	
822C2	Lamoni silty clay loam, 5 to 9 percent slopes, moderately eroded	8.52	2.3%		> 6.5ft.	Somewhat poorly drained	IIIe	31	30	
179F2	Gara loam, 18 to 24 percent slopes, moderately eroded	6.99	1.9%		> 6.5ft.	Well drained	VIe	12	13	
S273C	Olmitz loam, heavy till, 5 to 9 percent slopes	6.55	1.8%		> 6.5ft.	Moderately well drained	IIIe	77		
222C2	Clarinda silty clay loam, 5 to 9 percent slopes, moderately eroded	5.33	1.5%		> 6.5ft.	Poorly drained	IVw	28	25	
822D	Lamoni silty clay loam, 9 to 14 percent slopes	5.04	1.4%		> 6.5ft.	Somewhat poorly drained	IVe	14	20	
212	Kennebec silt loam, 0 to 2 percent slopes	4.61	1.3%		> 6.5ft.	Moderately well drained	Iw	90	86	
S172	Wabash silty clay, 0 to 2 percent slopes, occasionally flooded	4.02	1.1%		> 6.5ft.	Very poorly drained	IIIw	57		
470D2	Lamoni-Shelby complex, 9 to 14 percent slopes, moderately eroded	3.83	1.0%		> 6.5ft.	Somewhat poorly drained	IVe	20	27	
822D2	Lamoni silty clay loam, 9 to 14 percent slopes, moderately eroded	3.61	1.0%		> 6.5ft.	Somewhat poorly drained	IVe	10	15	
452C	Lineville silt loam, 5 to 9 percent slopes	3.54	1.0%		> 6.5ft.	Somewhat poorly drained	IIIe	48	36	
S179F	Gara loam, 18 to 25 percent slopes	2.95	0.8%		> 6.5ft.	Well drained	VIe	19		
S220	Nodaway silt loam, heavy till, 0 to 2 percent slopes, occasionally flooded	2.36	0.6%		> 6.5ft.	Moderately well drained	IIw	77		
93D2	Shelby-Adair complex, 9 to 14 percent slopes, moderately eroded	2.30	0.6%		> 6.5ft.	Well drained	IVe	32	25	
269B+	Humeston silt loam, 2 to 5 percent slopes, overwash, rarely flooded	0.13	0.0%		> 6.5ft.	Poorly drained	IIIw	71	58	
<b>Weighted Average</b>								<b>3.21</b>	<b>49.9</b>	<b>*-</b>

\*\*IA has updated the CSR values for each county to CSR2.

\*- CSR weighted average cannot be calculated on the current soils data, use prior data version for csr values.

\*c: Using Capabilities Class Dominant Condition Aggregation Method