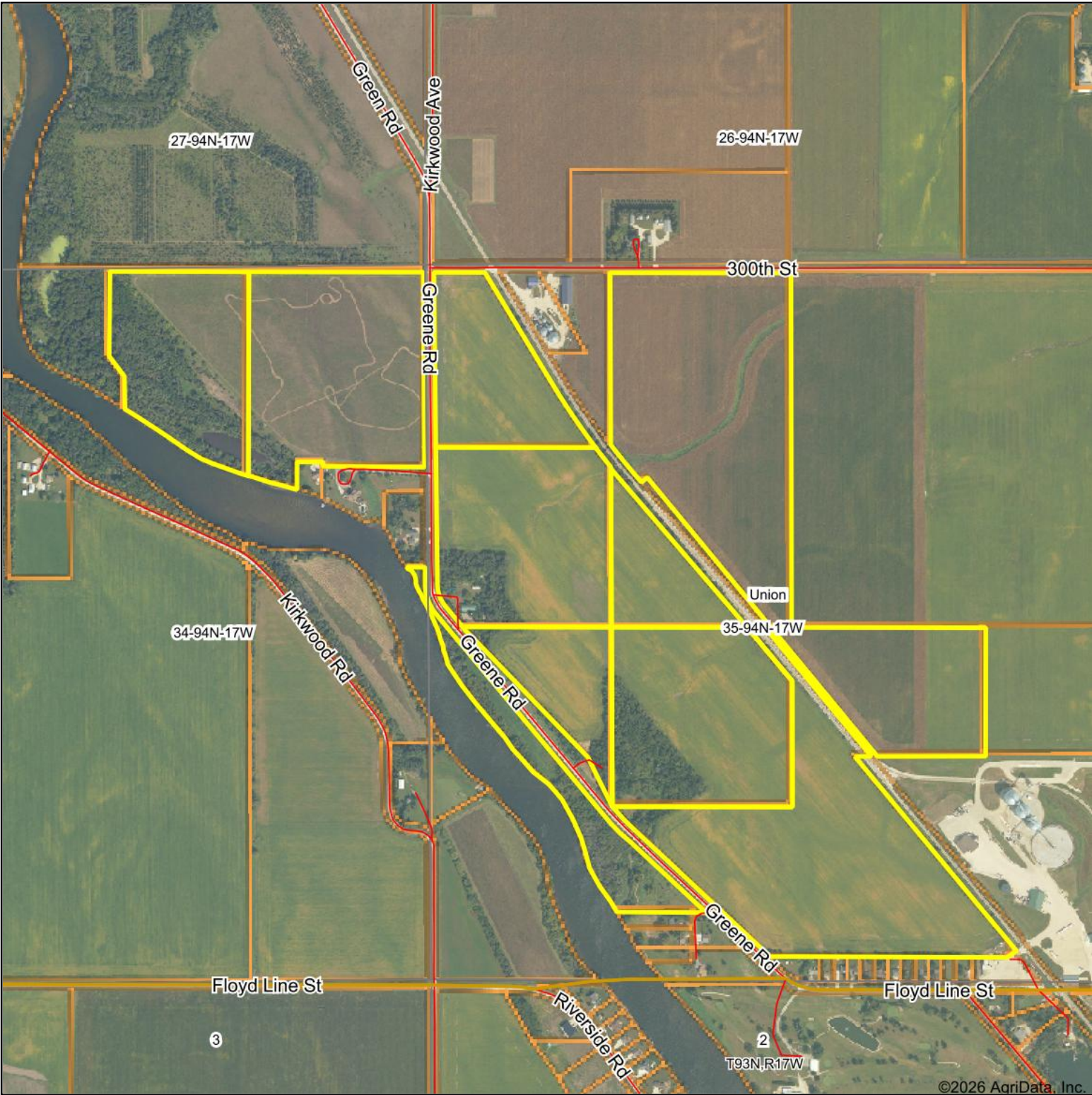
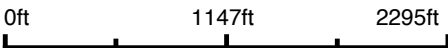


# Aerial Map



©2026 AgriData, Inc.

Boundary Center: 42° 54' 53.12, -92° 49' 34.33

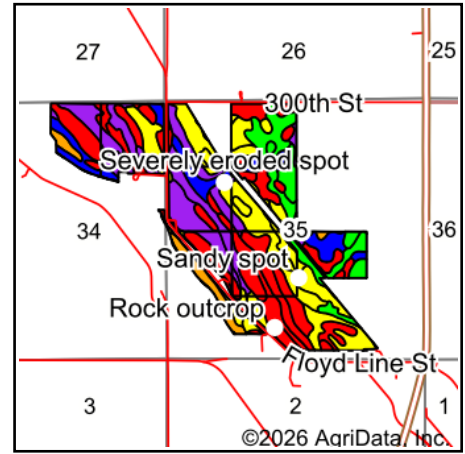
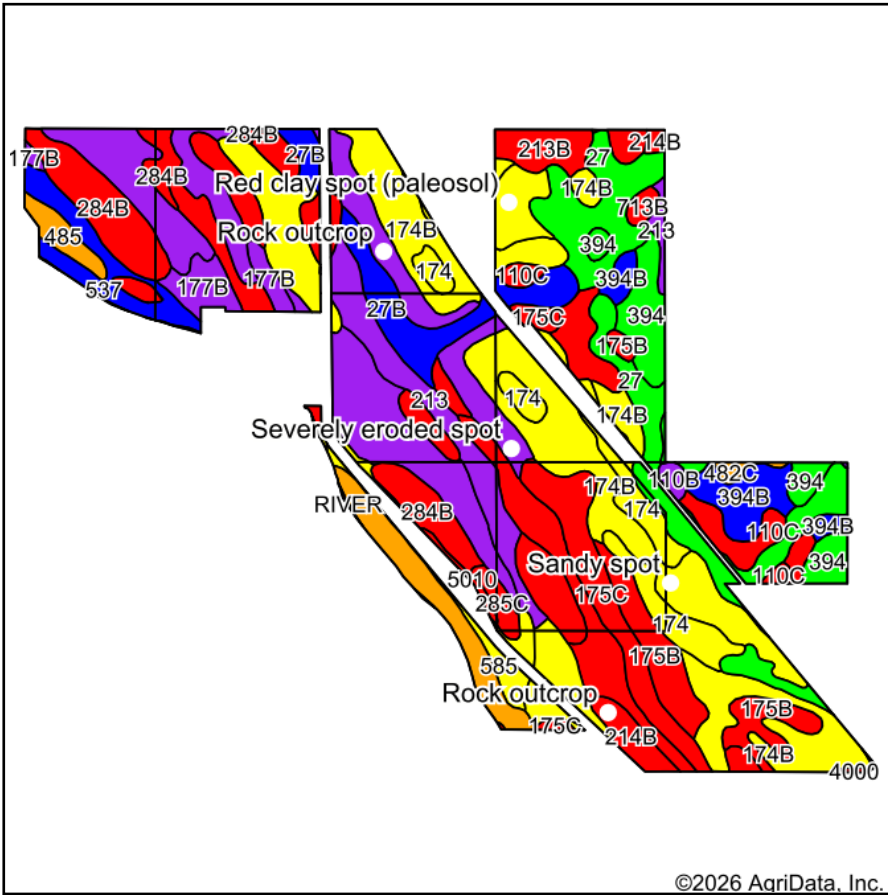


**35-94N-17W**  
**Floyd County**  
**Iowa**



6/12/2026

# Soils Map



State: **Iowa**  
 County: **Floyd**  
 Location: **35-94N-17W**  
 Township: **Union**  
 Acres: **362.92**  
 Date: **6/12/2026**



Maps Provided By:



Soils data provided by USDA and NRCS.

©2026 AgriData, Inc.

© AgriData, Inc. 2025

www.AgriDataInc.com

Area Symbol: IA067, Soil Area Version: 31

Code	Soil Description	Acres	Percent of field	CSR2 Legend	Restrictive Layer	Soil Drainage	Non-Irr Class *c	Irr Class *c	CSR2**	*n NCCPI Corn
174B	Bolan loam, 2 to 5 percent slopes	54.69	15.2%		> 6.5ft.	Well drained	IIs		64	81
177	Saude loam, 0 to 2 percent slopes	33.83	9.3%		2.3ft. (Strongly contrasting textural stratification)	Well drained	IIs		60	79
27	Terril loam, 0 to 2 percent slopes	30.52	8.4%		> 6.5ft.	Moderately well drained	I		95	97
284B	Flagler sandy loam, 2 to 5 percent slopes	22.74	6.3%		> 6.5ft.	Somewhat excessively drained	IIle		49	62
175B	Dickinson fine sandy loam, 2 to 5 percent slopes	19.68	5.4%		> 6.5ft.	Well drained	IIle		50	61
174	Bolan loam, 0 to 2 percent slopes	18.66	5.1%		> 6.5ft.	Well drained	IIs		70	84
213B	Rockton loam, 30 to 40 inches to limestone, till plain, 2 to 5 percent slopes	18.08	5.0%		2.9ft. (Lithic bedrock)	Well drained	Ile		49	58
175C	Dickinson fine sandy loam, 5 to 9 percent slopes	15.77	4.3%		> 6.5ft.	Well drained	IIle		45	61
213	Rockton loam, 30 to 40 inches to limestone, till plain, 0 to 2 percent slopes	14.75	4.1%		2.9ft. (Lithic bedrock)	Well drained	IIs		54	59
27B	Terril loam, 2 to 5 percent slopes	14.08	3.9%		> 6.5ft.	Moderately well drained	Ile		89	96
174C	Bolan loam, 5 to 9 percent slopes	13.27	3.7%		> 6.5ft.	Well drained	IIle		59	79

Soils data provided by USDA and NRCS.



Code	Soil Description	Acres	Percent of field	CSR2 Legend	Restrictive Layer	Soil Drainage	Non-Irr Class *c	Irr Class *c	CSR2**	*n NCCPI Corn	
214B	Rockton loam, 20 to 30 inches to limestone, till plain, 2 to 5 percent slopes	12.77	3.5%		2.1ft. (Lithic bedrock)	Well drained	Ile		47	52	
394	Ostrander loam, 0 to 2 percent slopes	12.37	3.4%		> 6.5ft.	Well drained	Is		94	78	
178	Waukee loam, 0 to 2 percent slopes	10.22	2.8%		2.7ft. (Strongly contrasting textural stratification)	Well drained	IIs		69	84	
394B	Ostrander loam, 2 to 5 percent slopes	9.79	2.7%		> 6.5ft.	Well drained	Ile		88	76	
733	Calco silty clay loam, 0 to 2 percent slopes	9.78	2.7%		> 6.5ft.	Poorly drained	IIw		78	49	
537	Du Page-Calco complex, 0 to 2 percent slopes	8.48	2.3%		> 6.5ft.	Moderately well drained	IIw		86	63	
285C	Burkhardt sandy loam, 5 to 9 percent slopes	8.47	2.3%		> 6.5ft.	Excessively drained	IIIs	IIle	13	57	
177B	Saude loam, 2 to 5 percent slopes	6.42	1.8%		2.3ft. (Strongly contrasting textural stratification)	Well drained	IIs		55	77	
110C	Lamont fine sandy loam, 5 to 9 percent slopes	5.89	1.6%		> 6.5ft.	Well drained	IIle		47	68	
178B	Waukee loam, 2 to 5 percent slopes	5.70	1.6%		2.7ft. (Strongly contrasting textural stratification)	Well drained	IIs		64	82	
585	Coland-Spillville complex, 0 to 2 percent slopes, occasionally flooded	4.64	1.3%		> 6.5ft.	Poorly drained	IIw		70	77	
485	Spillville loam, 0 to 2 percent slopes, occasionally flooded	3.21	0.9%		> 6.5ft.	Somewhat poorly drained	IIw		76	87	
285B	Burkhardt sandy loam, 2 to 5 percent slopes	2.11	0.6%		> 6.5ft.	Excessively drained	IIIs	IIle	17	58	
714B	Winneshiek silt loam, 20 to 30 inches to limestone, till plain, 2 to 5 percent slopes	1.51	0.4%		2ft. (Lithic bedrock)	Well drained	Ile		42	52	
713B	Winneshiek silt loam, 30 to 40 inches to limestone, till plain, 2 to 5 percent slopes	1.20	0.3%		2.8ft. (Lithic bedrock)	Well drained	Ile		44	59	
110B	Lamont fine sandy loam, 2 to 5 percent slopes	1.06	0.3%		> 6.5ft.	Well drained	IIle		52	68	
2153	Shandep clay loam, 0 to 2 percent slopes, ponded, occasionally flooded	1.02	0.3%		> 6.5ft.	Very poorly drained	Vw		21	5	
482C	Racine loam, 5 to 9 percent slopes	0.89	0.2%		> 6.5ft.	Well drained	IIle		77	91	
5010	Pits, sand and gravel	0.86	0.2%		> 6.5ft.	Excessively drained			0		
RIVER	Water, rivers and streams	0.30	0.1%		> 6.5ft.				0		
4000	Urban land	0.16	0.0%		> 6.5ft.				0		
<b>Weighted Average</b>								*-	*-	<b>63.5</b>	<b>*n 73.5</b>

\*\*IA has updated the CSR values for each county to CSR2.

\*n: The aggregation method is "Weighted Average using all components"

\*c: Using Capabilities Class Dominant Condition Aggregation Method

\*- Non Irr Class weighted average cannot be calculated on the current soils data due to missing data.

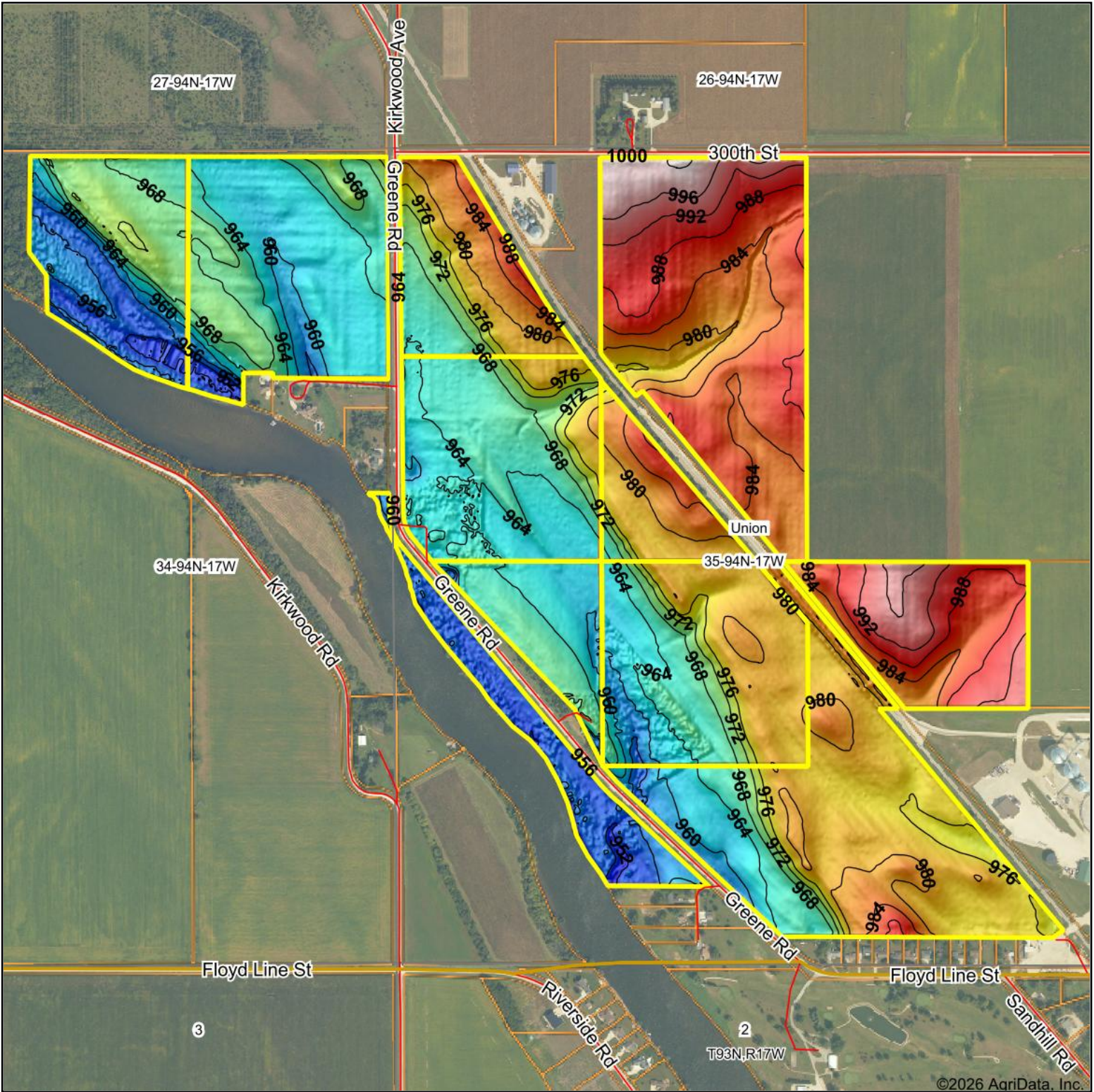
\*- Irr Class weighted average cannot be calculated on the current soils data due to missing data.

Symbol	Name	Description
--------	------	-------------

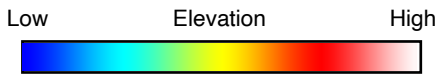


	Symbol	Name	Description
	CLR	Red clay spot (paleosol)	An exposure of clay that formed in red paleosol weathered from glacial till, surrounded by soils that are not clayey. Textures included would be clay and silty clay which have clay contents greater than 40 percent. Typically .5 to 2 acres.
	ROC	Rock outcrop	An exposure of bedrock at the surface of the earth. Not used where the named soils of the surrounding map unit are shallow overbedrock or where Rock outcrop is a named component of the map unit. Typically .5 to 2 acres.
	SAN	Sandy spot	A spot where the surface layer is loamy fine sand or coarser in areas where the surface layer of the named soils in the surrounding map unit is very fine sandy loam or finer. Typically .5 to 2 acres.
	ERO	Severely eroded spot	An area where on the average 75 percent or more of the original surface layer has been lost because of accelerated erosion. Not used in map units that are named severely eroded, very severely eroded, or gullied. Typically .5 to 2 acres.

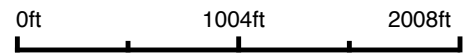
# Topography Hillshade



©2026 AgriData, Inc.



Source: USGS 3 meter dem  
 Interval(ft): 4  
 Min: 949.5  
 Max: 1,000.9  
 Range: 51.4  
 Average: 972.8  
 Standard Deviation: 11.42 ft



**35-94N-17W**  
**Floyd County**  
**Iowa**

6/12/2026

Boundary Center: 42° 54' 53.12, -92° 49' 34.33



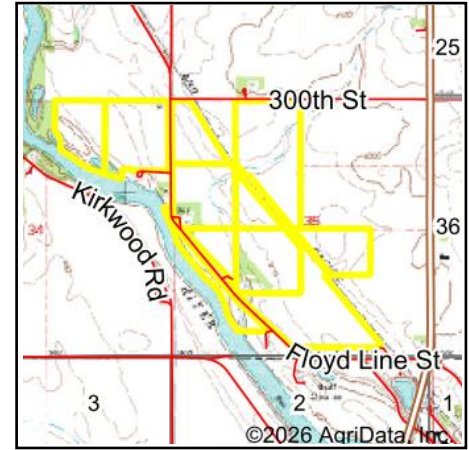
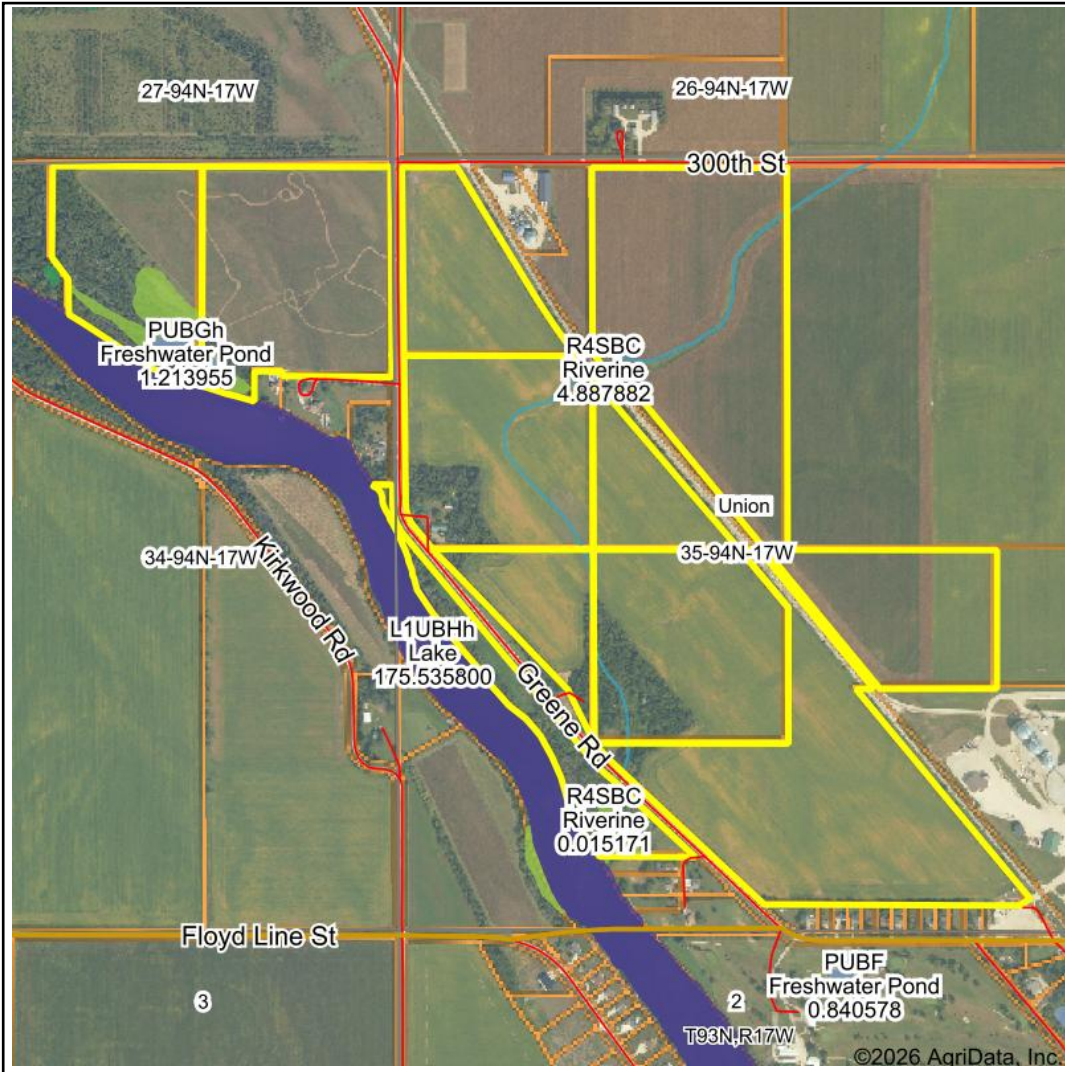
Maps Provided By:



© AgriData, Inc. 2025

www.AgriDataInc.com

# Wetlands Map



**State:** Iowa  
**Location:** 35-94N-17W  
**County:** Floyd  
**Township:** Union  
**Date:** 6/12/2026



© AgriData, Inc. 2025 www.AgriDataInc.com



0ft 1504ft 3008ft

Classification Code	Type	Acres
PEM1Ch	Freshwater Emergent Wetland	5.57
R4SBC	Riverine	2.36
PEM1Fh	Freshwater Emergent Wetland	1.89
L1UBHh	Lake	1.35
PUBGh	Freshwater Pond	1.21
Total Acres		12.38

Data Source: National Wetlands Inventory website. U.S. DoI, Fish and Wildlife Service, Washington, D.C. <http://www.fws.gov/wetlands/>