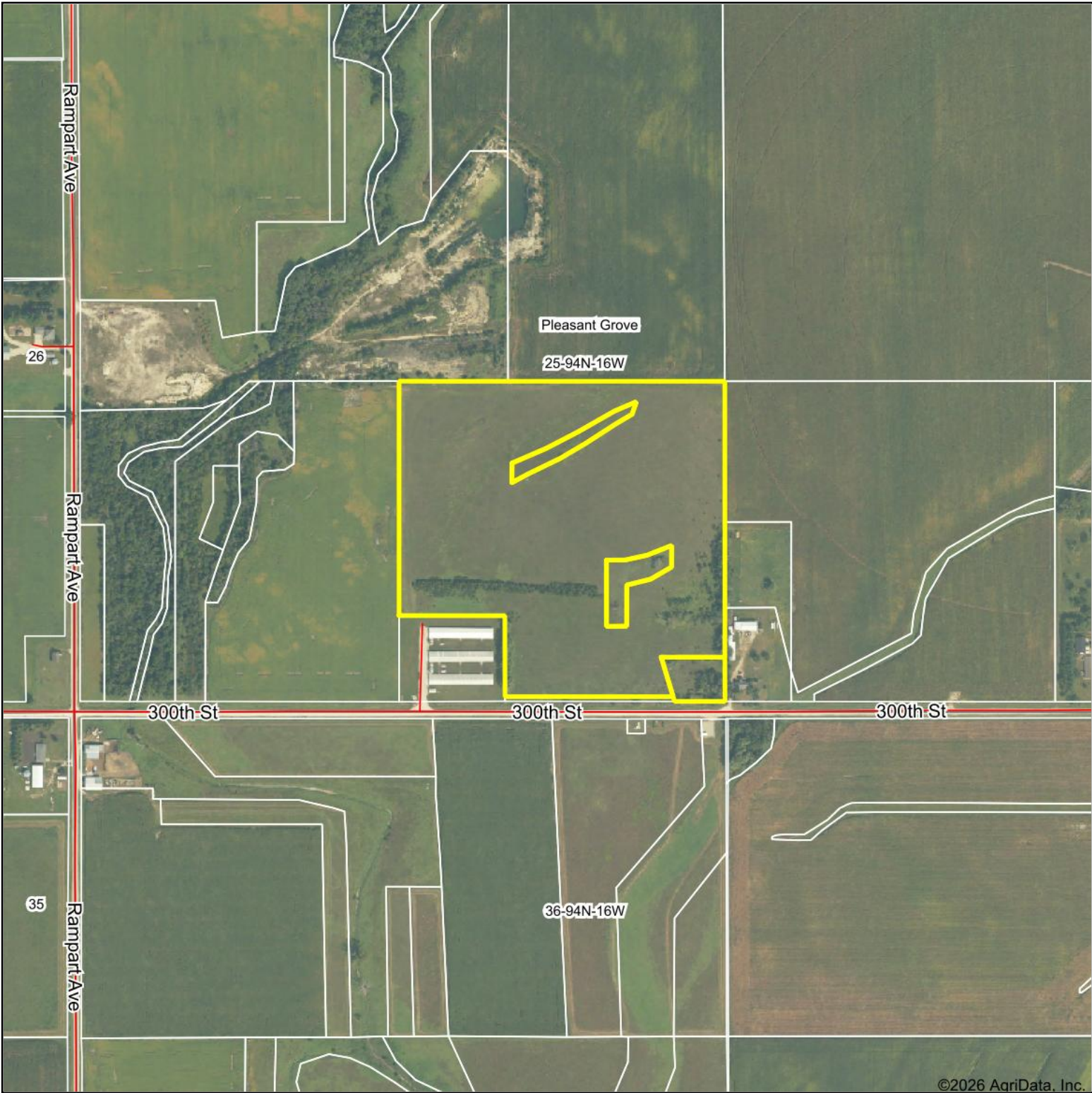
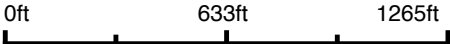


Aerial Map



©2026 AgriData, Inc.

Boundary Center: 42° 55' 24.79, -92° 41' 7.1



25-94N-16W
Floyd County
Iowa



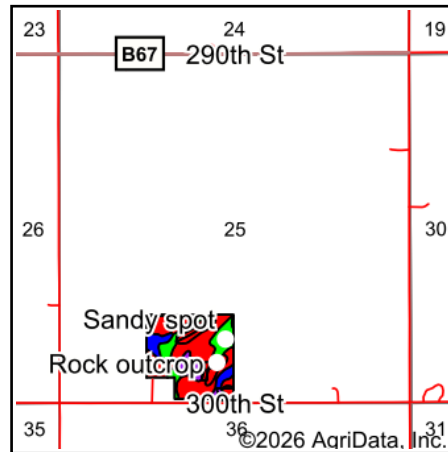
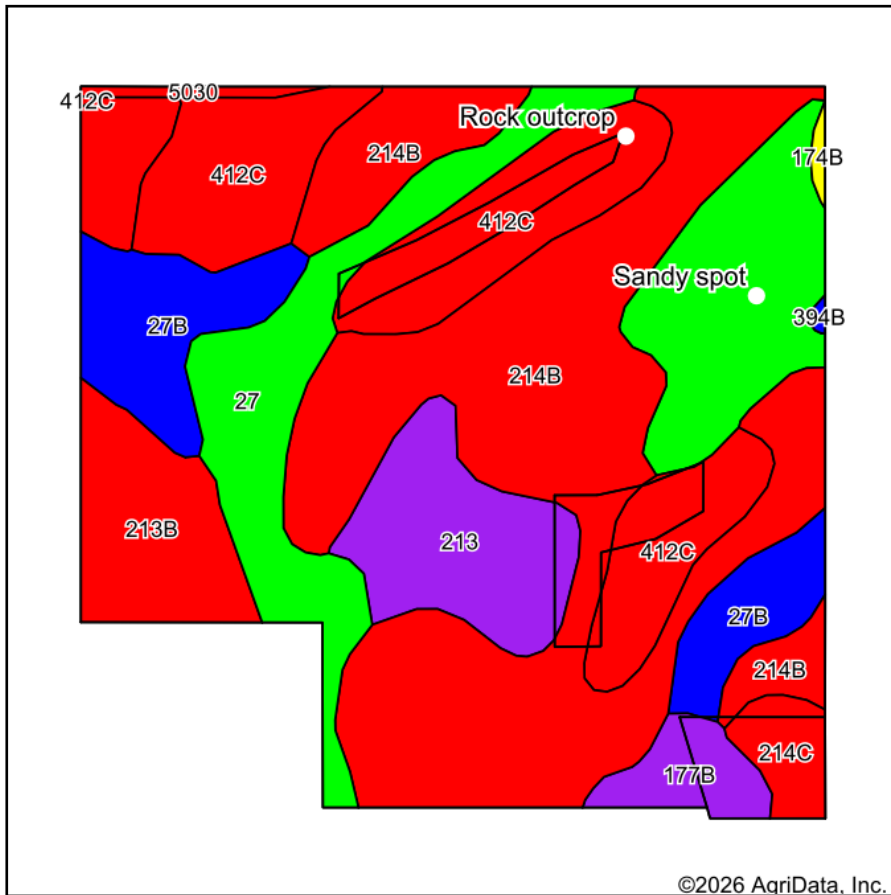
6/16/2026



Maps Provided By:
surety
CUSTOMIZED ONLINE MAPPING
© AgriData, Inc. 2025 www.AgriDataInc.com

Field borders provided by Farm Service Agency as of 5/21/2008.

Soils Map



State: **Iowa**
 County: **Floyd**
 Location: **25-94N-16W**
 Township: **Pleasant Grove**
 Acres: **35.81**
 Date: **6/16/2026**



Maps Provided By:
surety
 CUSTOMIZED ONLINE MAPPING
 © AgriData, Inc. 2025 www.AgriDataInc.com



Soils data provided by USDA and NRCS.

Area Symbol: IA067, Soil Area Version: 31

Code	Soil Description	Acres	Percent of field	CSR2 Legend	Restrictive Layer	Soil Drainage	Non-Irr Class *c	CSR2**	
214B	Rockton loam, 20 to 30 inches to limestone, till plain, 2 to 5 percent slopes	12.99	36.2%		2.1ft. (Lithic bedrock)	Well drained	Ile	47	
412C	Emeline loam, 2 to 9 percent slopes	5.85	16.3%		0.7ft. (Lithic bedrock)	Somewhat excessively drained	IVs	7	
27	Terril loam, 0 to 2 percent slopes	3.57	10.0%		> 6.5ft.	Moderately well drained	I	95	
394	Ostrander loam, 0 to 2 percent slopes	3.17	8.9%		> 6.5ft.	Well drained	Is	94	
27B	Terril loam, 2 to 5 percent slopes	2.97	8.3%		> 6.5ft.	Moderately well drained	Ile	89	
213B	Rockton loam, 30 to 40 inches to limestone, till plain, 2 to 5 percent slopes	2.89	8.1%		2.9ft. (Lithic bedrock)	Well drained	Ile	49	
213	Rockton loam, 30 to 40 inches to limestone, till plain, 0 to 2 percent slopes	2.62	7.3%		2.9ft. (Lithic bedrock)	Well drained	IIs	54	
177B	Saude loam, 2 to 5 percent slopes	0.85	2.4%		2.3ft. (Strongly contrasting textural stratification)	Well drained	IIs	55	
214C	Rockton loam, 20 to 30 inches to limestone, till plain, 5 to 9 percent slopes	0.64	1.8%		2.1ft. (Lithic bedrock)	Well drained	IIIe	40	
5030	Pits, limestone quarry	0.18	0.5%		> 6.5ft.			0	
174B	Bolan loam, 2 to 5 percent slopes	0.08	0.2%		> 6.5ft.	Well drained	IIs	64	
Weighted Average								*-	53.4

Soils data provided by USDA and NRCS.



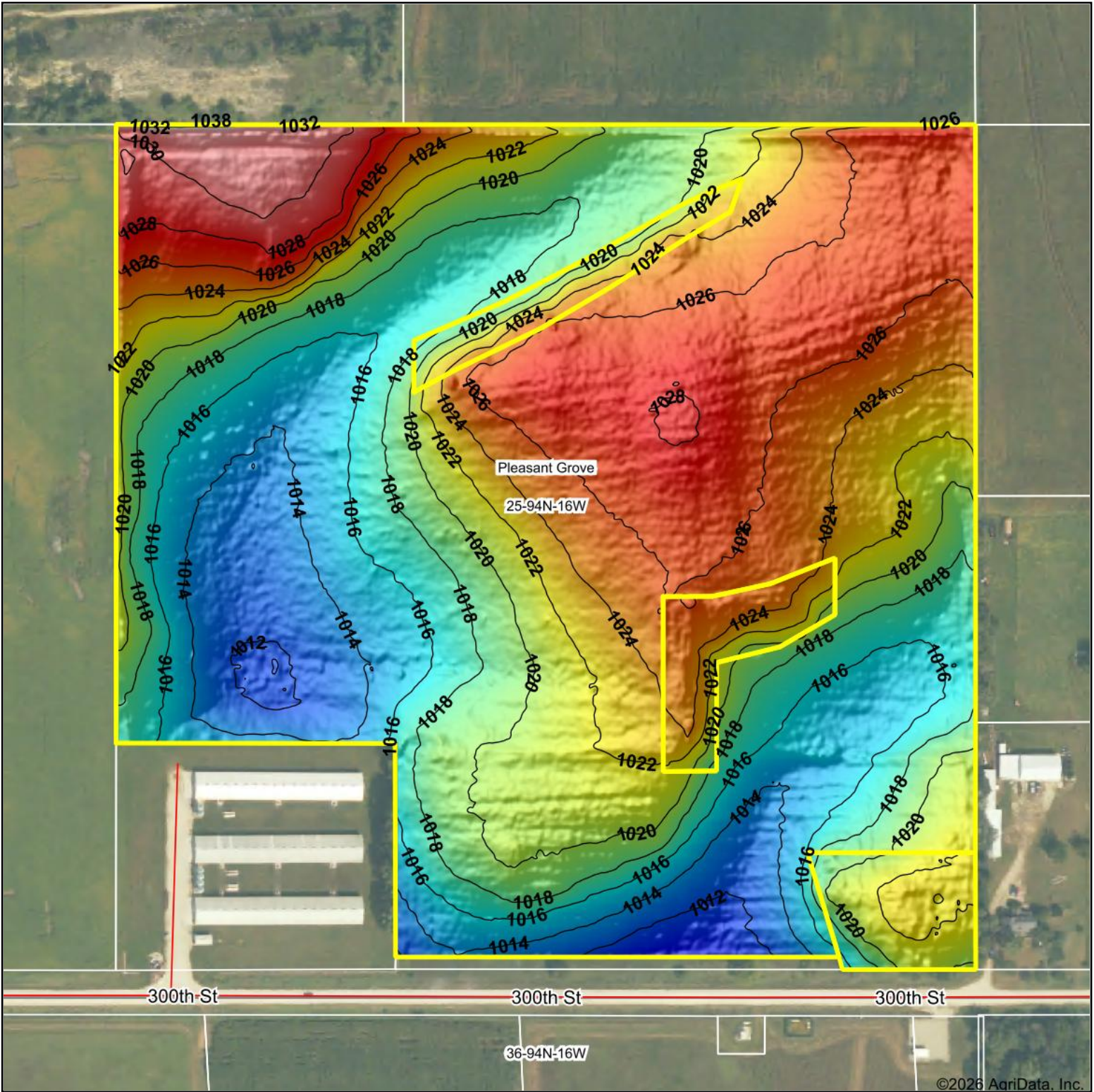
**IA has updated the CSR values for each county to CSR2.

*c: Using Capabilities Class Dominant Condition Aggregation Method

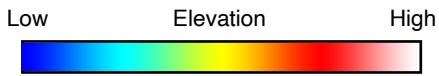
*- Non Irr Class weighted average cannot be calculated on the current soils data due to missing data.

	Symbol	Name	Description
	ROC	Rock outcrop	An exposure of bedrock at the surface of the earth. Not used where the named soils of the surrounding map unit are shallow overbedrock or where Rock outcrop is a named component of the map unit. Typically .5 to 2 acres.
	SAN	Sandy spot	A spot where the surface layer is loamy fine sand or coarser in areas where the surface layer of the named soils in the surrounding map unit is very fine sandy loam or finer. Typically .5 to 2 acres.

Topography Hillshade



©2026 AgriData, Inc.



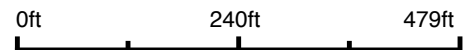
Maps Provided By:



© AgriData, Inc. 2025 www.AgriDataInc.com

Field borders provided by Farm Service Agency as of 5/21/2008.

Source: USGS 1 meter dem
 Interval(ft): 2
 Min: 1,010.3
 Max: 1,033.5
 Range: 23.2
 Average: 1,020.7
 Standard Deviation: 4.86 ft

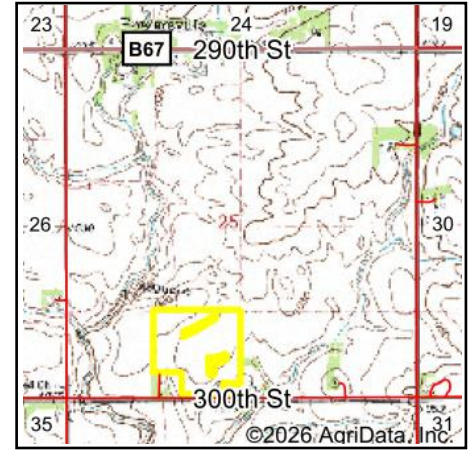
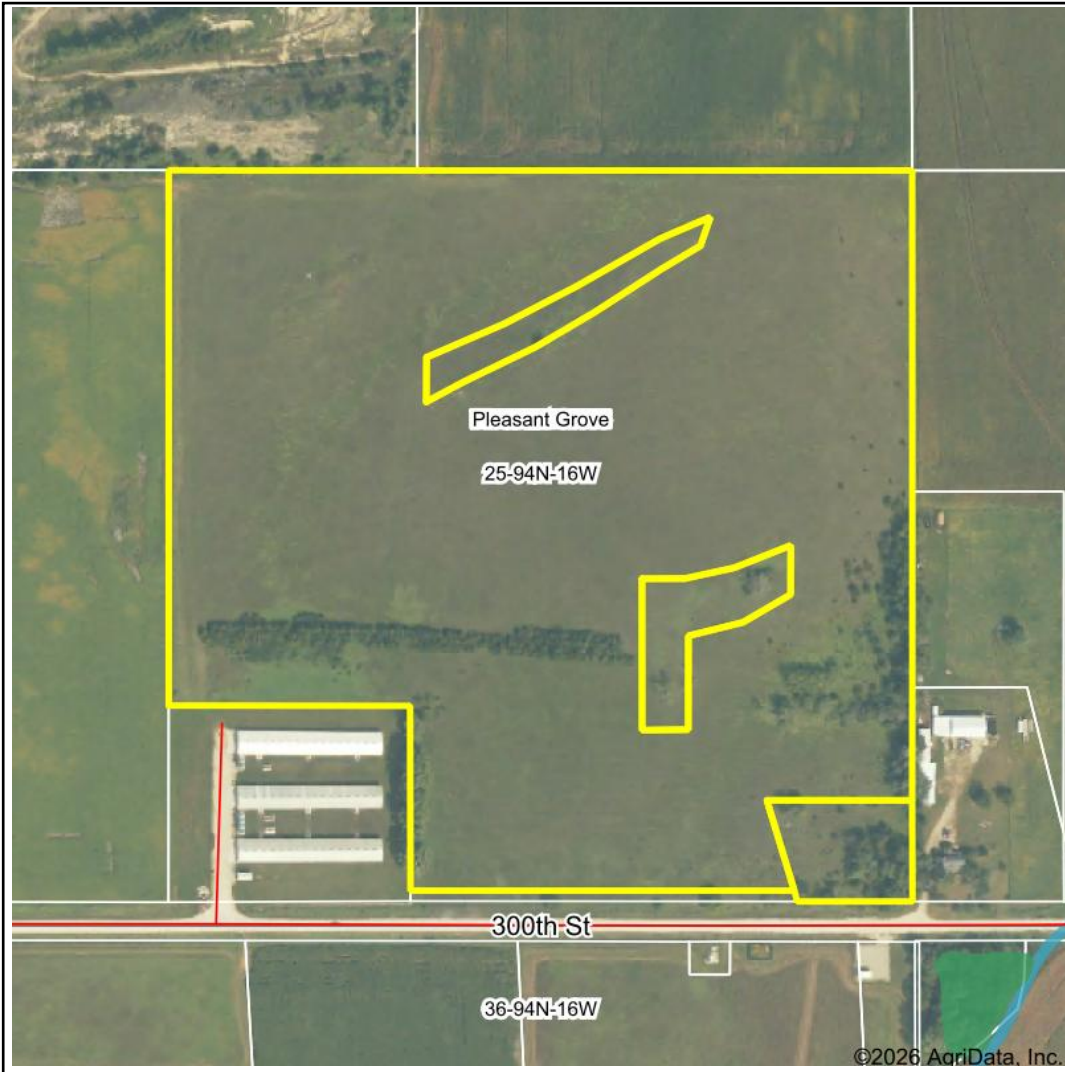


6/16/2026

25-94N-16W
Floyd County
Iowa

Boundary Center: 42° 55' 24.79, -92° 41' 7.1

Wetlands Map



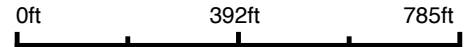
State: Iowa
Location: 25-94N-16W
County: Floyd
Township: Pleasant Grove
Date: 6/16/2026



Maps Provided By:



© AgriData, Inc. 2025 www.AgriDataInc.com



Classification Code	Type	Acres
	Total Acres	0.00

Data Source: National Wetlands Inventory website. U.S. DoI, Fish and Wildlife Service, Washington, D.C. <http://www.fws.gov/wetlands/>