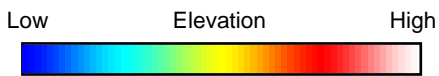
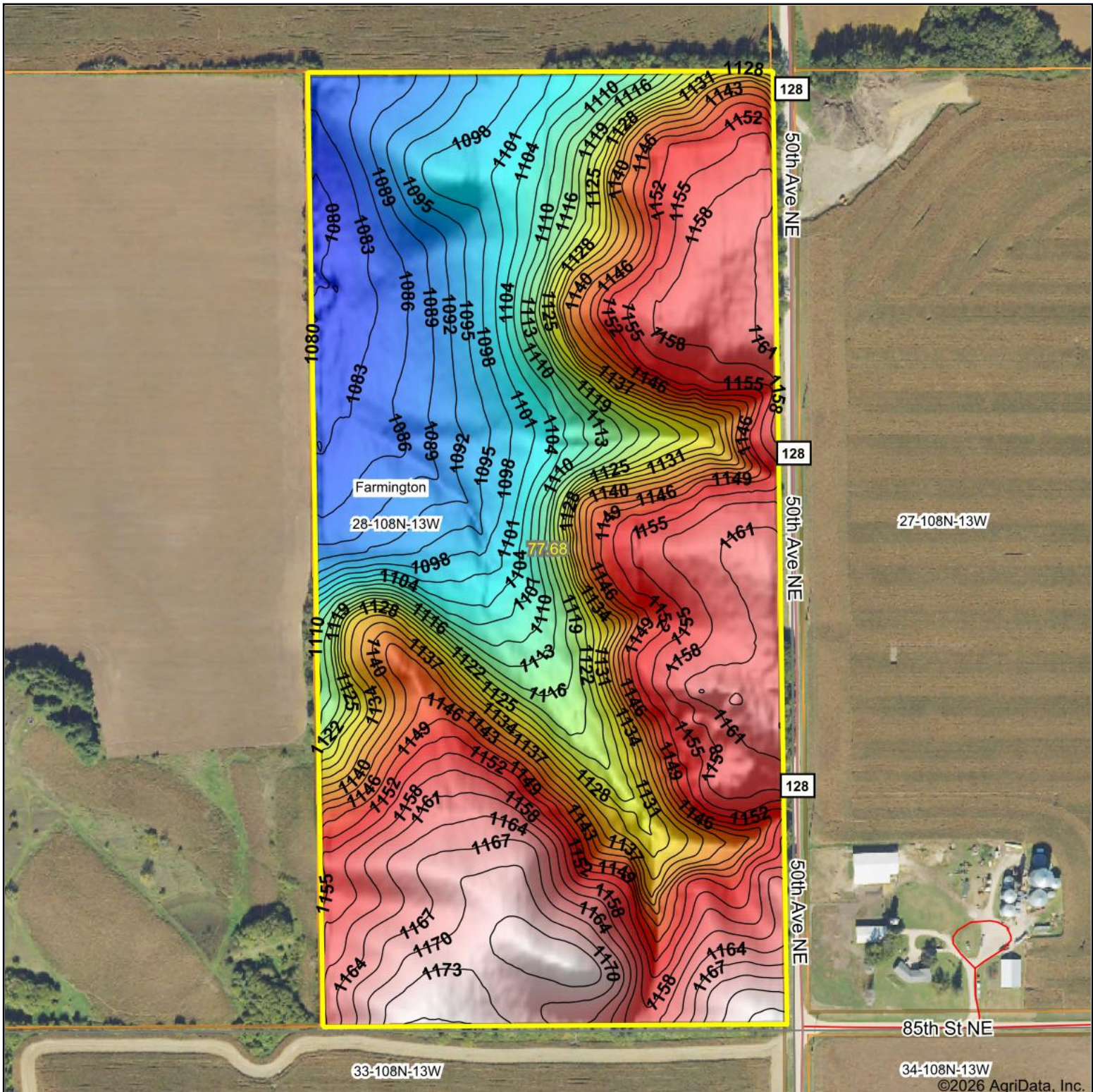
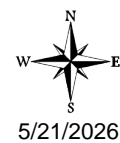


Searles Topography Hillshade



Source: USGS 3 meter dem
 Interval(ft): 3
 Min: 1,077.6
 Max: 1,176.5
 Range: 98.9
 Average: 1,132.2
 Standard Deviation: 29.13 ft



28-108N-13W
Olmsted County
Minnesota

Boundary Center: 44° 7' 33.67, -92° 22' 53.94