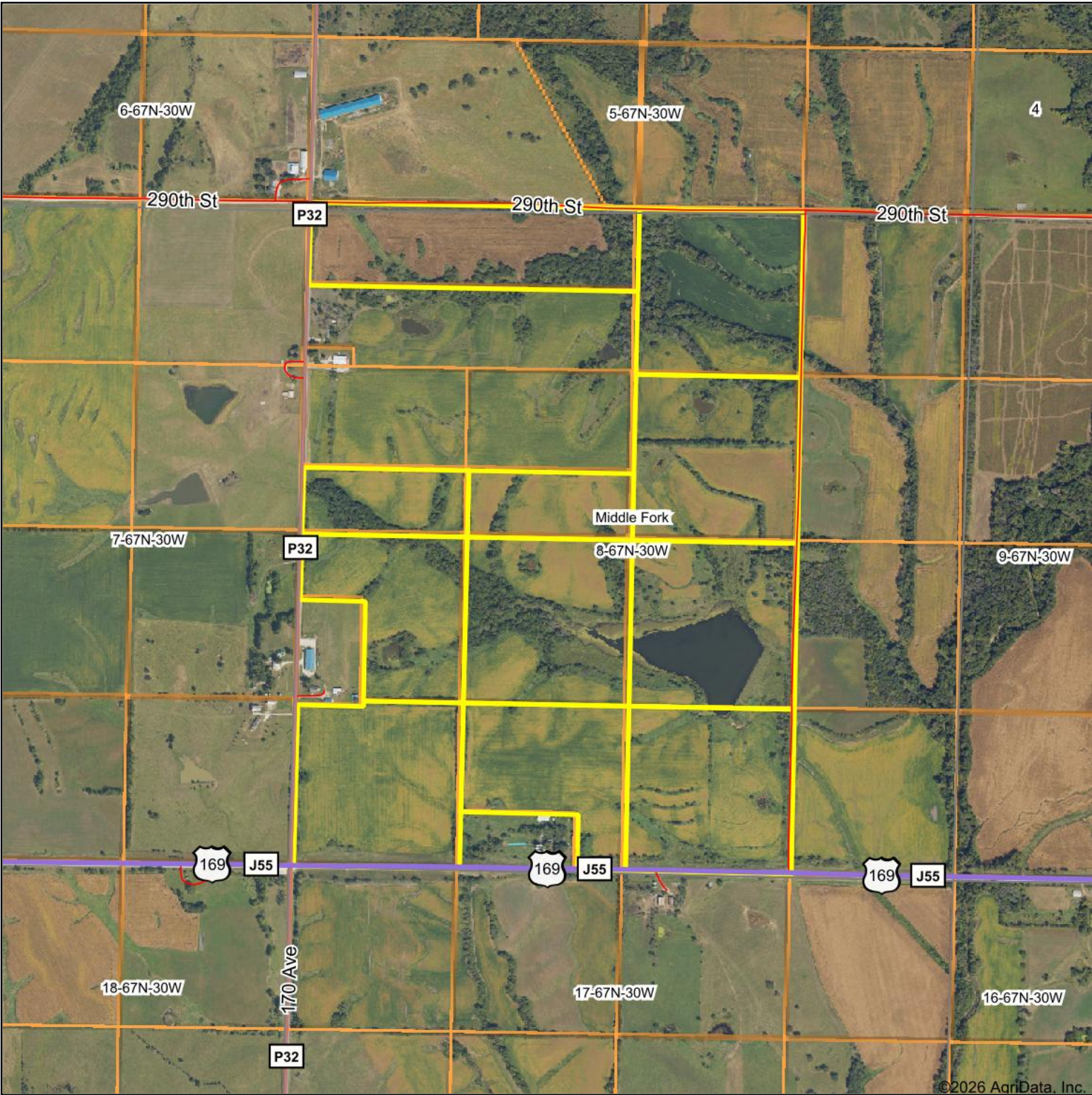
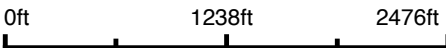


Aerial Map



Boundary Center: 40° 37' 2.69, -94° 19' 51.91



8-67N-30W
Ringgold County
Iowa



4/3/2026



© AgriData, Inc. 2025 www.AgriDataInc.com

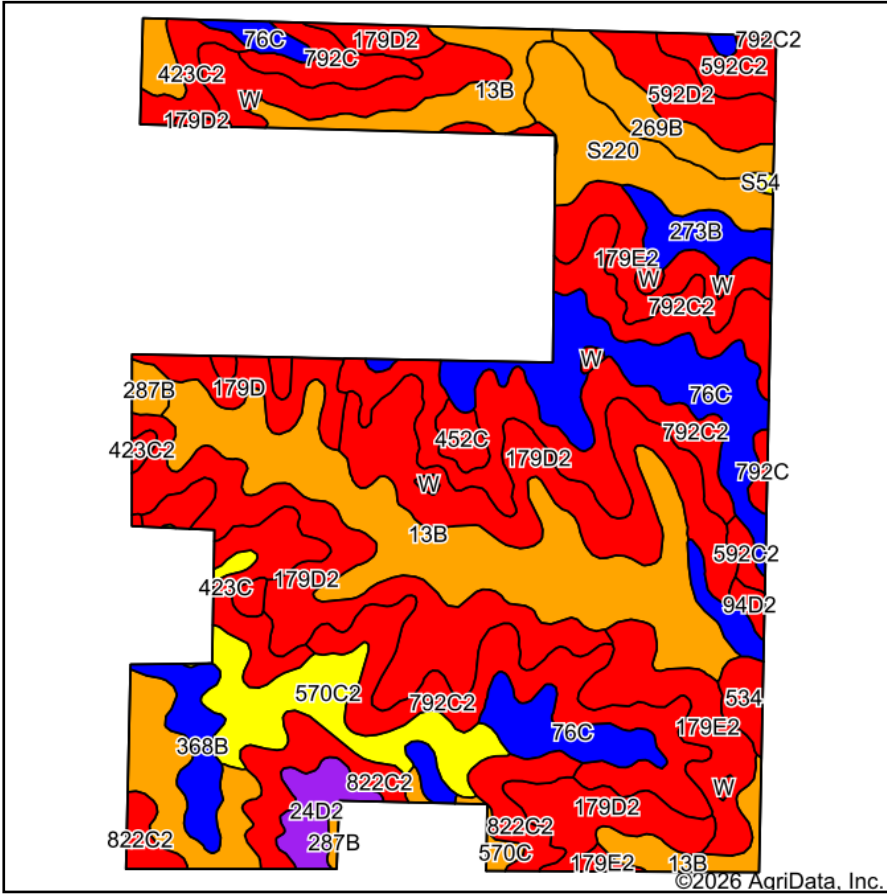
Maps Provided By:



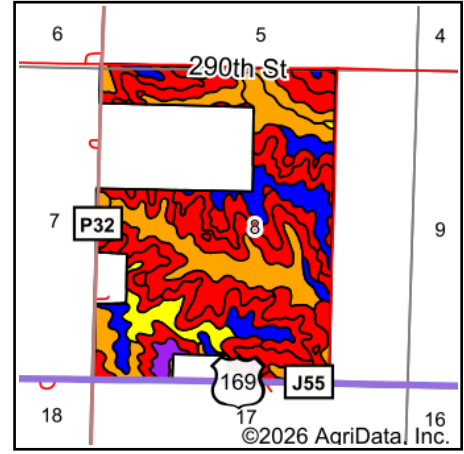
© AgriData, Inc. 2025

www.AgriDataInc.com

Soils Map



Soils data provided by USDA and NRCS.



State: **Iowa**
 County: **Ringgold**
 Location: **8-67N-30W**
 Township: **Middle Fork**
 Acres: **369.39**
 Date: **4/6/2026**



Maps Provided By:



© AgriData, Inc. 2025

www.AgriDataInc.com



Area Symbol: IA159, Soil Area Version: 31

Code	Soil Description	Acres	Percent of field	CSR2 Legend	Restrictive Layer	Soil Drainage	Non-Irr Class *c	*i Corn Bu	*i Alfalfa Tons	*i Soybeans Bu	*i Bluegrass Tons	*i Tall Grasses Tons	*i Water-Holding Inch	CSR2**	CSR
179D2	Gara loam, 9 to 14 percent slopes, moderately eroded	63.27	17.0%		> 6.5ft.	Well drained	IVe	163.2	4.6	47.3	2.9	4.9	10.7	38	43
13B	Olmitz-Zook-Humeston complex, 0 to 5 percent slopes	54.61	14.8%		> 6.5ft.	Poorly drained	IIw	80.0	1.7	23.2	1.4	2.4	11.7	78	59
792C2	Armstrong clay loam, 5 to 9 percent slopes, moderately eroded	49.77	13.5%		> 6.5ft.	Somewhat poorly drained	IIle	123.2	3.4	35.7	2.2	3.7	9.2	24	27
76C	Ladoga silt loam, 5 to 9 percent slopes	28.72	7.8%		> 6.5ft.	Moderately well drained	IIle	196.8	5.5	57.1	3.5	5.9	11.8	81	67
179E2	Gara loam, 14 to 18 percent slopes, moderately eroded	22.62	6.1%		> 6.5ft.	Well drained	VIe	139.2	3.9	40.4	2.5	4.2	10.7	24	33

Soils data provided by USDA and NRCS.

Code	Soil Description	Acres	Percent of field	CSR2 Legend	Restrictive Layer	Soil Drainage	Non-Irr Class *c	*j Corn Bu	*j Alfalfa Tons	*j Soybeans Bu	*j Bluegrass Tons	*j Tall Grasses Tons	*j Water-Holding Inch	CSR2**	CSR
179D	Gara loam, 9 to 14 percent slopes	17.09	4.6%		> 6.5ft.	Well drained	IVe	168.0	4.7	48.7	3.0	5.0	10.7	42	45
570C2	Nira silty clay loam, 5 to 9 percent slopes, moderately eroded	16.24	4.4%		> 6.5ft.	Moderately well drained	IIle	187.2	5.2	54.3	3.4	5.6	11.7	68	64
822C2	Lamoni silty clay loam, 5 to 9 percent slopes, moderately eroded	15.21	4.1%		> 6.5ft.	Somewhat poorly drained	IIle	129.6	3.4	37.6	2.3	3.9	9.5	31	30
S220	Nodaway silt loam, heavy till, 0 to 2 percent slopes, occasionally flooded	14.64	4.0%		> 6.5ft.	Moderately well drained	IIlw	0.0	0.0	0.0	0.0	0.0	0.0	77	
570C	Nira silty clay loam, 5 to 9 percent slopes	14.34	3.9%		> 6.5ft.	Moderately well drained	IIle	192.0	5.4	55.7	3.5	5.8	11.7	72	69
423C	Bucknell silty clay loam, 5 to 9 percent slopes	9.44	2.6%		0.9ft. (Abrupt textural change)	Somewhat poorly drained	IIle	131.2	3.4	38.0	2.4	3.9	9.4	36	31
273B	Olmitz loam, heavy till, 2 to 5 percent slopes	8.02	2.2%		> 6.5ft.	Moderately well drained	Ile	224.0	6.3	65.0	4.0	6.7	10.8	81	72
592D2	Mystic clay loam, 9 to 14 percent slopes, moderately eroded	7.94	2.1%		> 6.5ft.	Somewhat poorly drained	IVe	88.0	2.3	25.5	1.6	2.6	10.5	10	5
368B	Macksburg silty clay loam, 2 to 5 percent slopes	7.58	2.1%		> 6.5ft.	Somewhat poorly drained	Ile	222.4	5.8	64.5	4.0	6.7	11.9	89	90
269B	Humeston silty clay loam, 2 to 5 percent slopes, rarely flooded	7.16	1.9%		> 6.5ft.	Poorly drained	IIlw	80.0	1.7	23.2	1.4	2.4	10.1	71	53
792C	Armstrong loam, 5 to 9 percent slopes	5.94	1.6%		1.5ft. (Abrupt textural change)	Somewhat poorly drained	IIle	128.0	3.6	37.1	2.3	3.8	9.2	35	31

Code	Soil Description	Acres	Percent of field	CSR2 Legend	Restrictive Layer	Soil Drainage	Non-Irr Class *c	*i Corn Bu	*i Alfalfa Tons	*i Soybeans Bu	*i Bluegrass Tons	*i Tall Grasses Tons	*i Water-Holding Inch	CSR2**	CSR
592C2	Mystic clay loam, 5 to 9 percent slopes, moderately eroded	5.81	1.6%		> 6.5ft.	Somewhat poorly drained	Ille	115.2	3.0	33.4	2.1	3.5	10.5	31	20
24D2	Shelby clay loam, 9 to 14 percent slopes, moderately eroded	5.14	1.4%		> 6.5ft.	Well drained	Ille	168.0	4.7	48.7	3.0	5.0	10.2	51	48
423C2	Bucknell silty clay loam, 5 to 9 percent slopes, moderately eroded	4.66	1.3%		0.9ft. (Abrupt textural change)	Somewhat poorly drained	Ille	126.4	3.3	36.7	2.3	3.8	9.4	34	29
W	Water	2.85	0.8%		> 6.5ft.			0.0	0.0	0.0	0.0	0.0	0.0	0	0
534	Carlow silty clay, 0 to 2 percent slopes	2.73	0.7%		> 6.5ft.	Poorly drained	Illw	171.2	3.6	49.6	3.1	5.1	6.6	43	43
452C	Lineville silt loam, 5 to 9 percent slopes	2.21	0.6%		> 6.5ft.	Somewhat poorly drained	Ille	80.0	2.1	23.2	1.4	2.4	10.8	48	36
287B	Zook-Ely silty clay loams, 0 to 5 percent slopes	1.97	0.5%		> 6.5ft.	Poorly drained	Ilw	184.0	3.9	53.4	3.3	5.5	10.8	75	60
94D2	Mystic-Caleb complex, 9 to 14 percent slopes, moderately eroded	1.01	0.3%		> 6.5ft.	Somewhat poorly drained	IVe	120.0	3.1	34.8	2.2	3.6	9.7	20	13
S54	Zook silty clay loam, heavy till, 0 to 2 percent slopes, occasionally flooded	0.42	0.1%		> 6.5ft.	Poorly drained	Ilw	0.0	0.0	0.0	0.0	0.0	0.0	68	
Weighted Average							*-	136.1	3.7	39.5	2.4	4.1	10.1	50.5	*-

**IA has updated the CSR values for each county to CSR2.

*- CSR weighted average cannot be calculated on the current soils data, use prior data version for csr values.*i Yield data provided by the ISPAID Database version 8.1.1 developed by IA State University.

*c: Using Capabilities Class Dominant Condition Aggregation Method

*- Non Irr Class weighted average cannot be calculated on the current soils data due to missing data.