

Aerial Map



©2026 AgriData, Inc.

Boundary Center: 43° 17' 39.08, -91° 21' 32.08



19-98N-4W
Allamakee County
Iowa

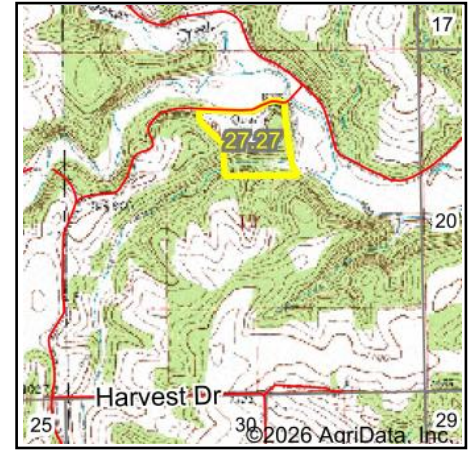
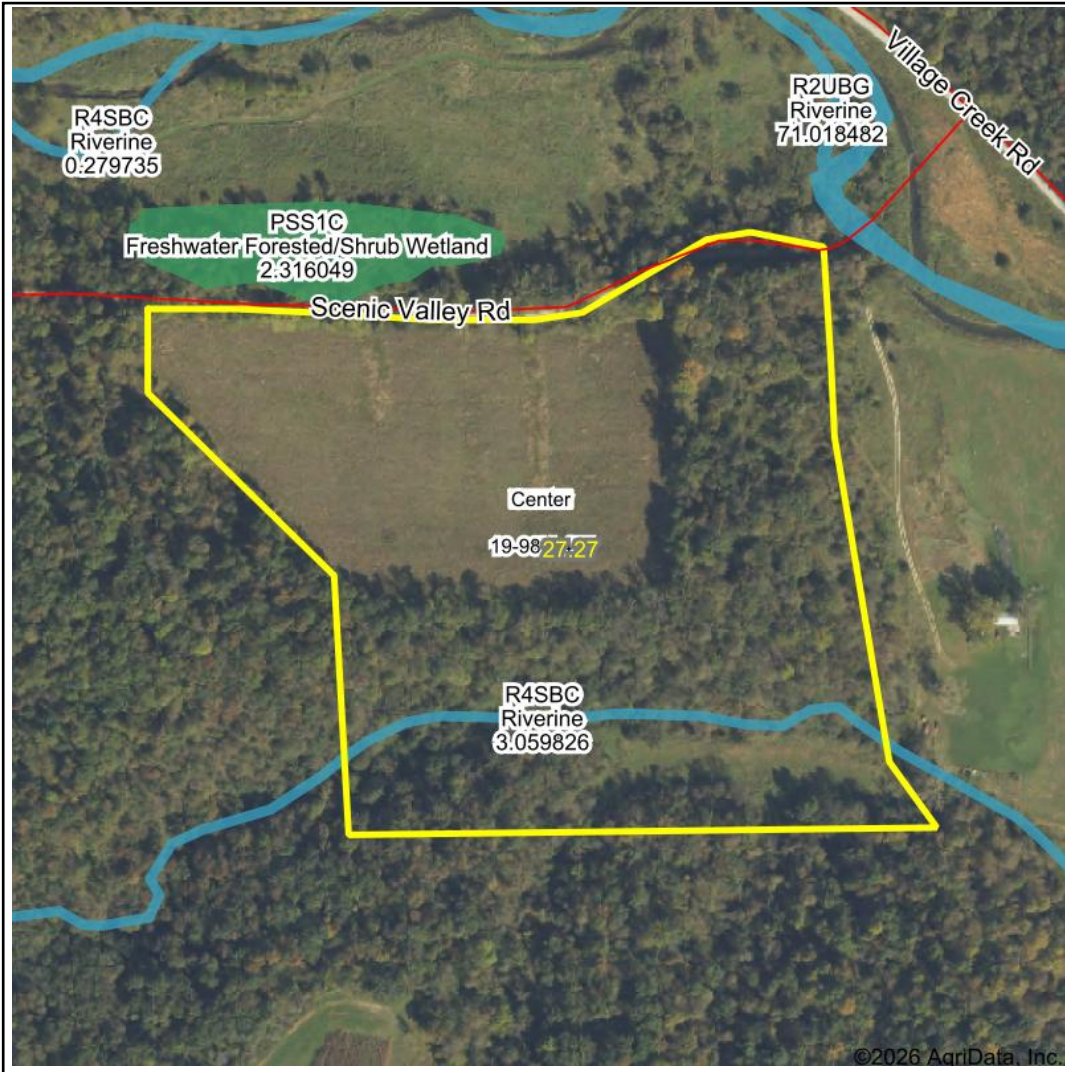


6/8/2026

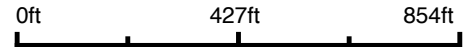


© AgriData, Inc. 2025 www.AgriDataInc.com

Wetlands Map



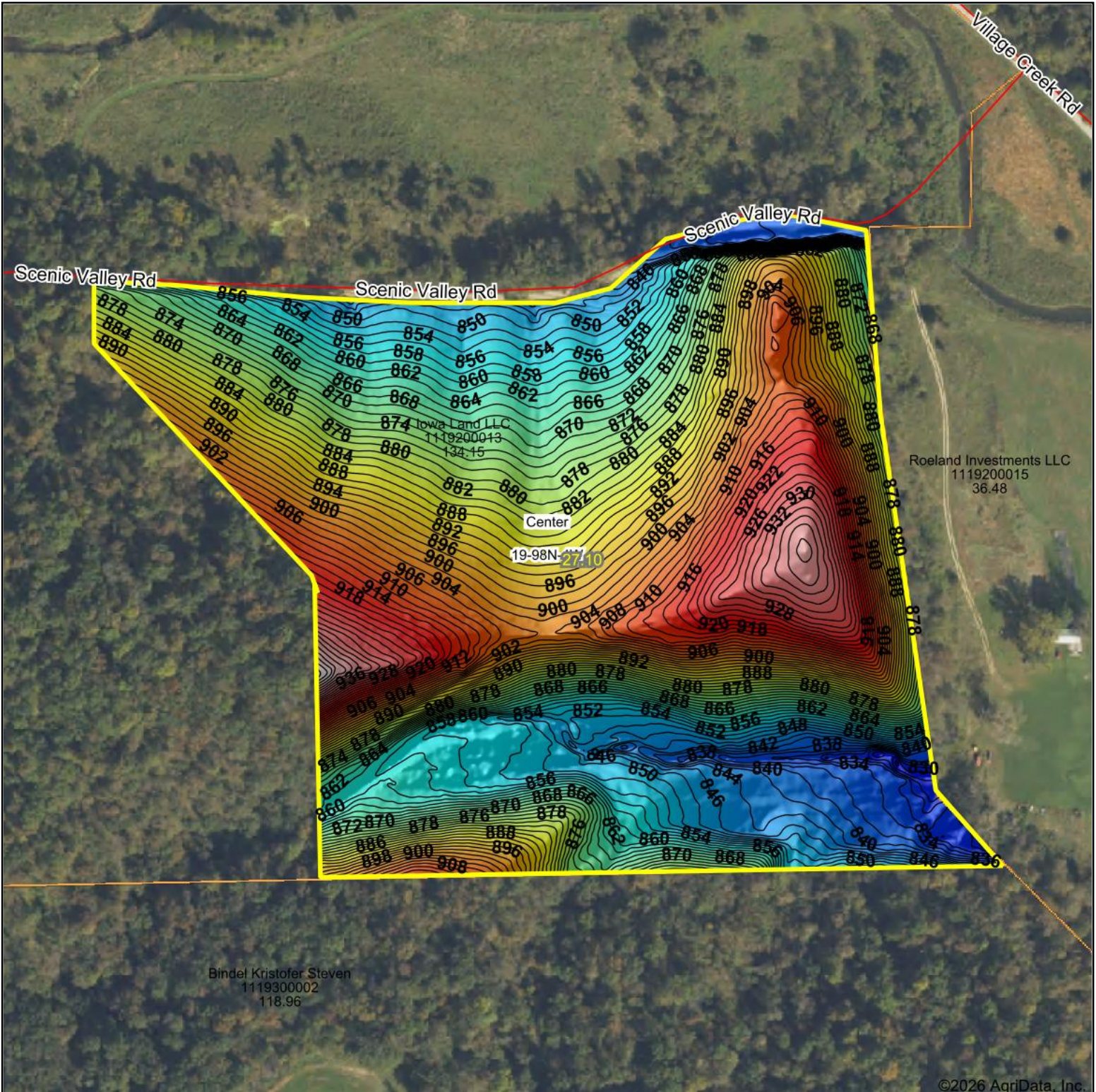
State: **Iowa**
 Location: **19-98N-4W**
 County: **Allamakee**
 Township: **Center**
 Date: **6/8/2026**



Classification Code	Type	Acres
R4SBC	Riverine	0.50
Total Acres		0.50

Data Source: National Wetlands Inventory website. U.S. DoI, Fish and Wildlife Service, Washington, D.C. <http://www.fws.gov/wetlands/>

Topography Hillshade



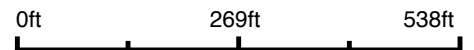
HIGH POINT
LAND COMPANY

Maps Provided By:

surety
CUSTOMIZED ONLINE MAPPING

© AgriData, Inc. 2025 www.AgriDataInc.com

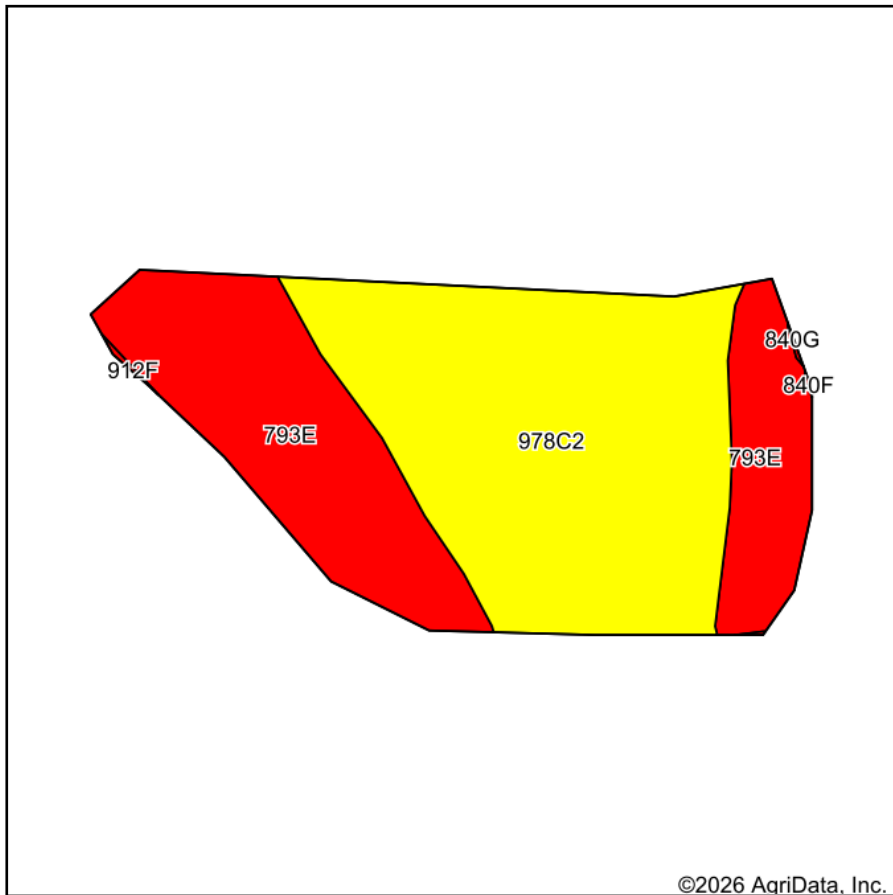
Source: USGS 1 meter dem
Interval(ft): 2
Min: 825.4
Max: 951.0
Range: 125.6
Average: 881.3
Standard Deviation: 26.08 ft



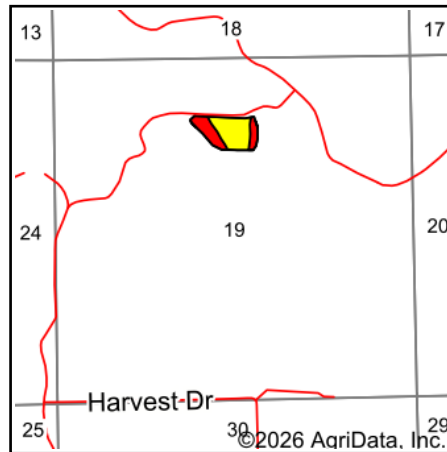
19-98N-4W
Allamakee County
Iowa

Boundary Center: 43° 17' 39.08, -91° 21' 32.34

Soils Map



Soils data provided by USDA and NRCS.



State: **Iowa**
 County: **Allamakee**
 Location: **19-98N-4W**
 Township: **Center**
 Acres: **9.67**
 Date: **6/9/2026**



Maps Provided By:



Area Symbol: IA005, Soil Area Version: 29

Code	Soil Description	Acres	Percent of field	CSR2 Legend	Restrictive Layer	Soil Drainage	Non-Irr Class *c	CSR2**
978C2	Festina silt loam, 6 to 12 percent slopes, moderately eroded	5.65	58.4%		> 6.5ft.	Well drained	IIIe	63
793E	Plumcreek silt loam, 20 to 45 percent slopes	4.02	41.6%		> 6.5ft.	Well drained	VIIe	11
Weighted Average							4.66	41.4

**IA has updated the CSR values for each county to CSR2.

*c: Using Capabilities Class Dominant Condition Aggregation Method