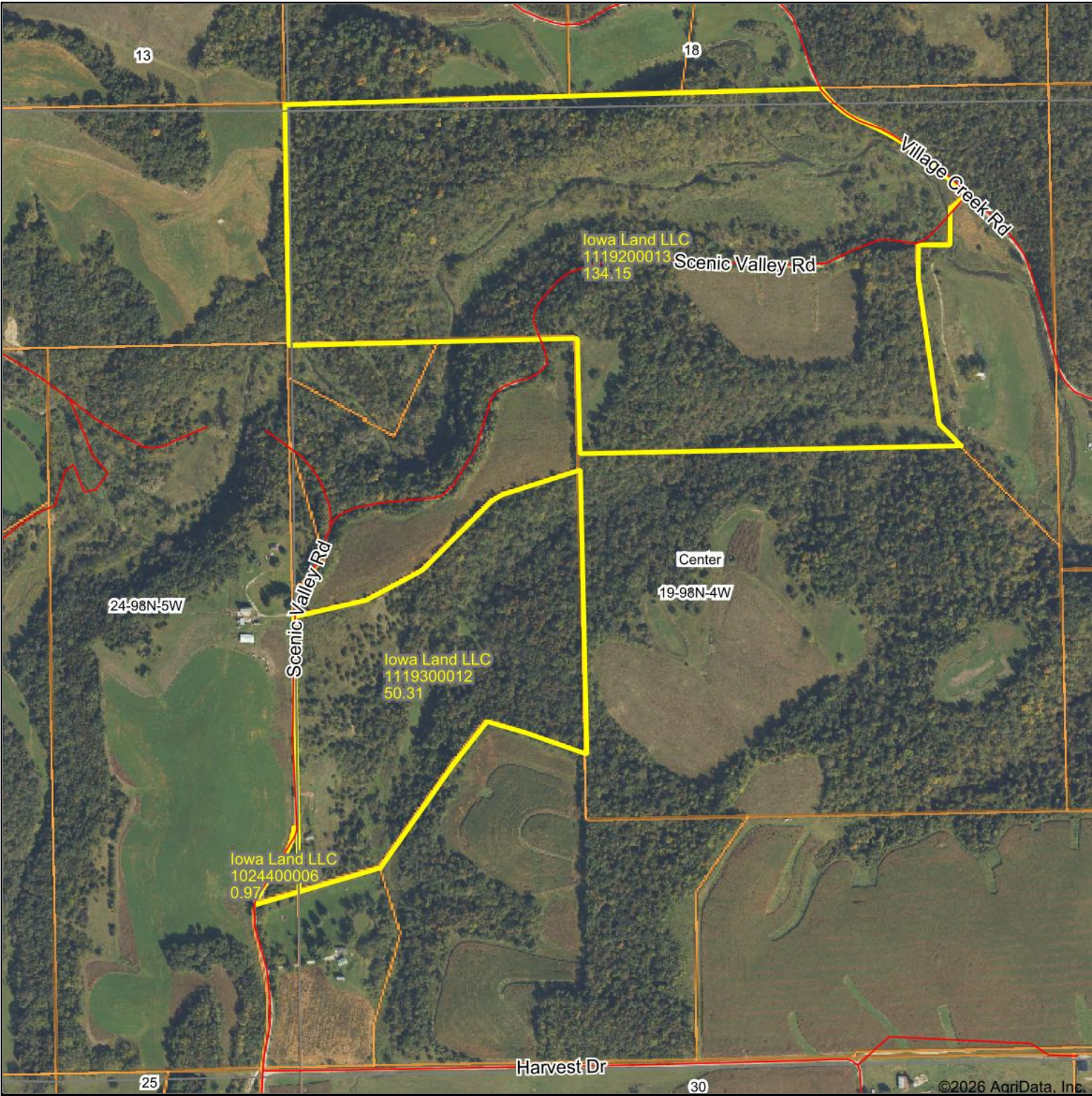


Aerial Map



Boundary Center: 43° 17' 31.18, -91° 21' 47.84



19-98N-4W
Allamakee County
Iowa



6/4/2026



Maps Provided By:
surety
CUSTOMIZED ONLINE MAPPING
© AgriData, Inc. 2025 www.AgriDataInc.com



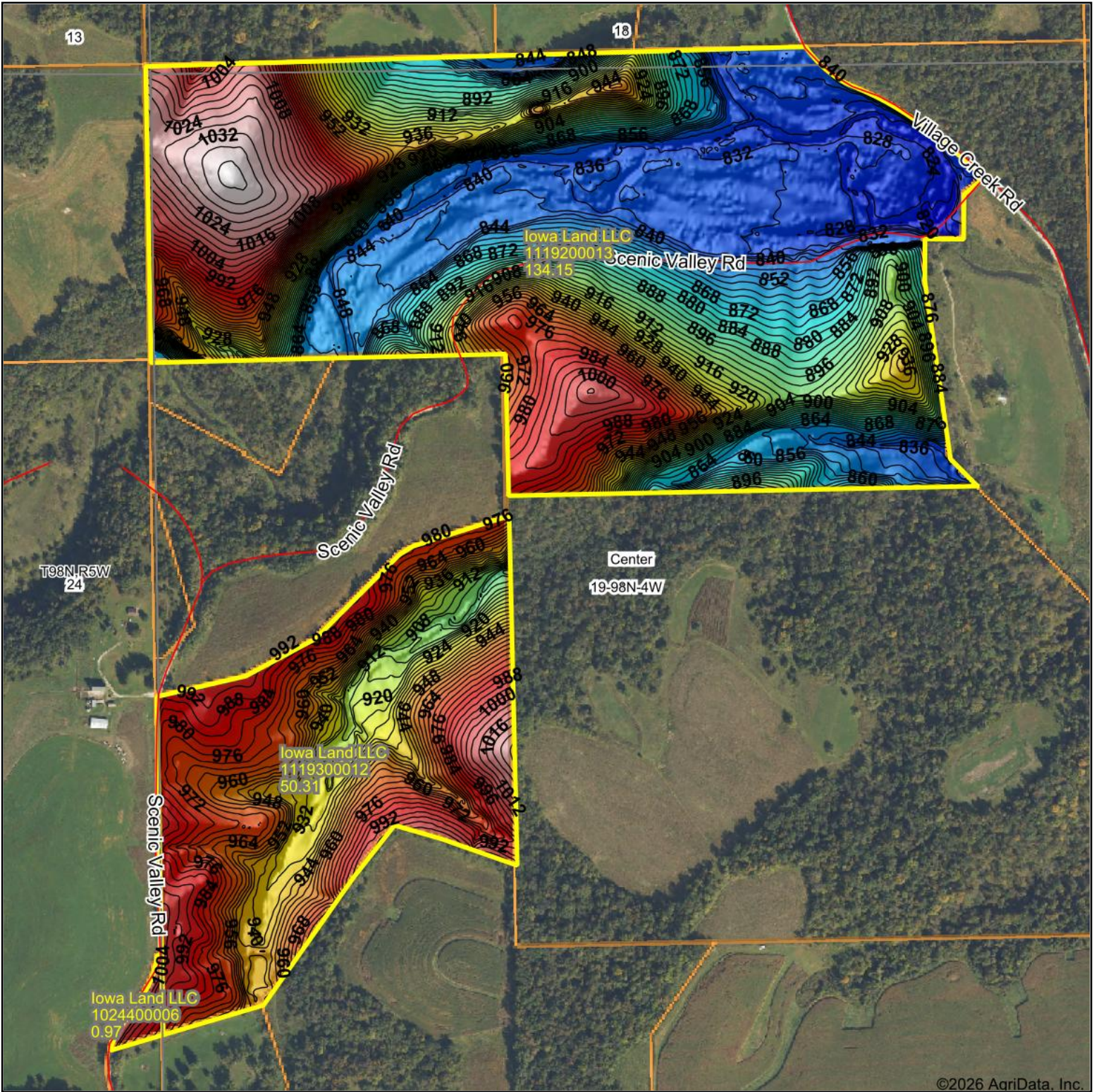
Code	Soil Description	Acres	Percent of field	Non-Irr Class Legend	Restrictive Layer	Soil Drainage	Non-Irr Class *c
162C2	Downs silt loam, 5 to 9 percent slopes, moderately eroded	2.35	1.3%		> 6.5ft.	Well drained	IIIe
129B	Arenzville-Chaseburg complex, 1 to 5 percent slopes	2.26	1.2%		> 6.5ft.	Moderately well drained	IIw
912D	Paintcreek silt loam, 9 to 14 percent slopes	1.54	0.8%		> 6.5ft.	Well drained	IVe
1793G	Bertrand-Chelsea complex, 18 to 35 percent slopes	1.22	0.7%		> 6.5ft.	Well drained	VIIe
142	Chaseburg silt loam, 0 to 2 percent slopes	1.00	0.5%		> 6.5ft.	Well drained	IIw
163C2	Fayette silt loam, 5 to 9 percent slopes, moderately eroded	0.22	0.1%		> 6.5ft.	Well drained	IIIe
912D2	Paintcreek silt loam, 9 to 14 percent slopes, moderately eroded	0.16	0.1%		> 6.5ft.	Well drained	IVe
861E	Yellowriver silt loam, 14 to 18 percent slopes	0.10	0.1%		> 6.5ft.	Well drained	IVe
Weighted Average							4.80

**IA has updated the CSR values for each county to CSR2.

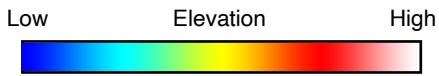
*c: Using Capabilities Class Dominant Condition Aggregation Method

Symbol	Name	Description
MPI	Mine or quarry	An open excavation from which soil and underlying material have been removed and in which bedrock is exposed. Also denotes surface openings to underground mines. Typically 0.5 to 2 acres.
SAN	Sandy spot	A spot where the surface layer is loamy fine sand or coarser in areas where the surface layer of the named soils in the surrounding map unit is very fine sandy loam or finer. Typically 0.5 to 2 acres.

Topography Hillshade



©2026 AgriData, Inc.



Maps Provided By:



© AgriData, Inc. 2025

www.AgriDataInc.com

Source: USGS 3 meter dem

Interval(ft): 4

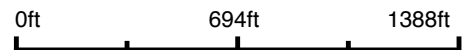
Min: 817.0

Max: 1,041.2

Range: 224.2

Average: 918.1

Standard Deviation: 62.07 ft

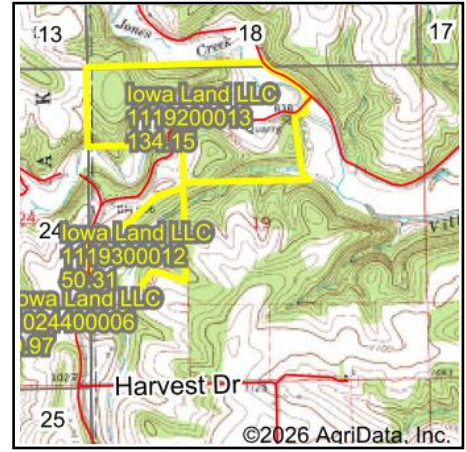
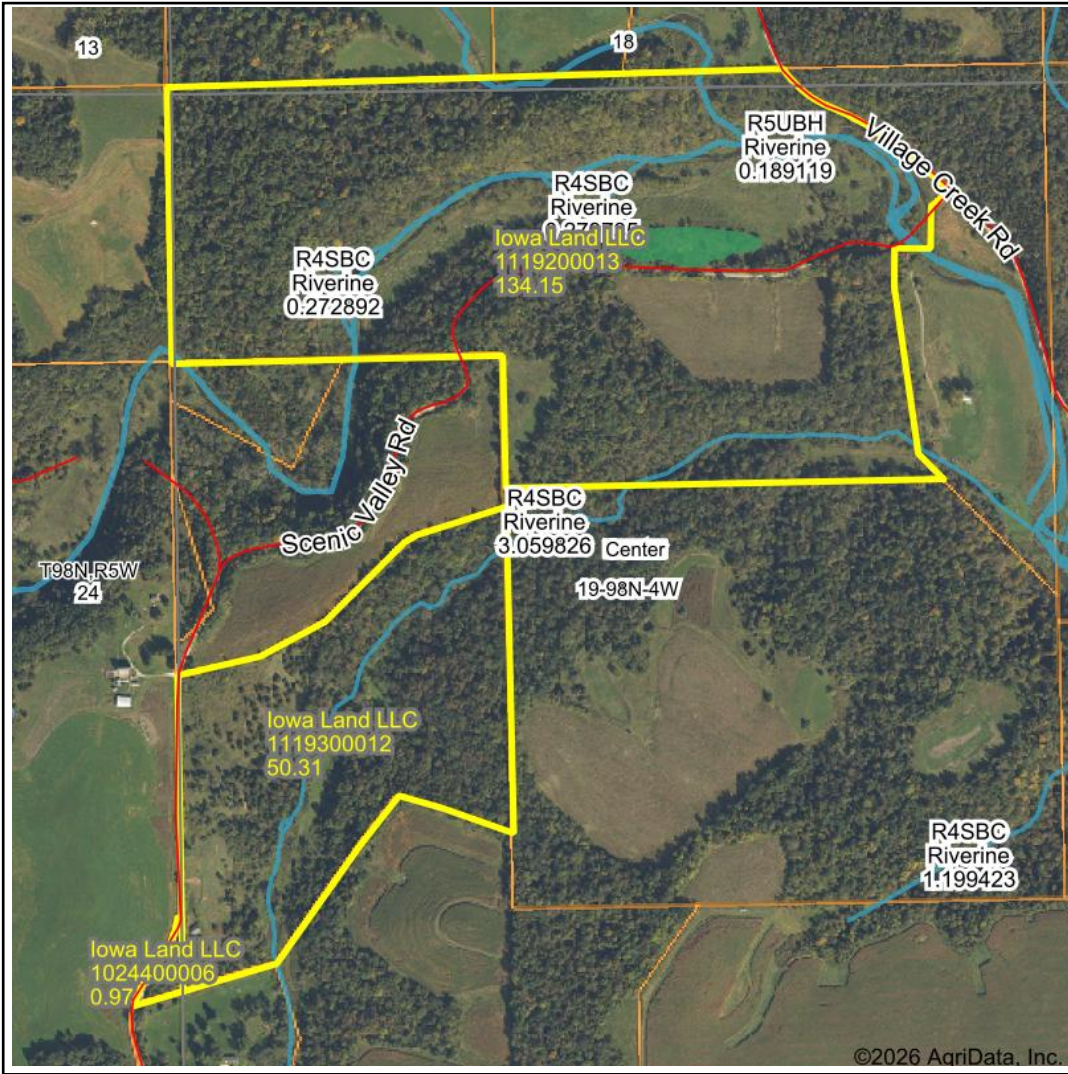


6/4/2026

19-98N-4W
Allamakee County
Iowa

Boundary Center: 43° 17' 31.18, -91° 21' 47.84

Wetlands Map



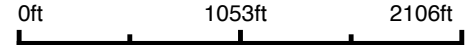
State: **Iowa**
 Location: **19-98N-4W**
 County: **Allamakee**
 Township: **Center**
 Date: **6/4/2026**



Maps Provided By:



© AgriData, Inc. 2025 www.AgriDataInc.com



Classification Code	Type	Acres
R4SBC	Riverine	2.39
PSS1C	Freshwater Forested/Shrub Wetland	2.32
R2UBF	Riverine	2.03
R2UBG	Riverine	1.26
R5UBH	Riverine	0.19
Total Acres		8.19

Data Source: National Wetlands Inventory website. U.S. DoI, Fish and Wildlife Service, Washington, D.C. <http://www.fws.gov/wetlands/>