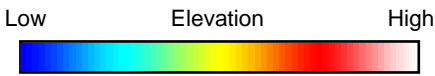
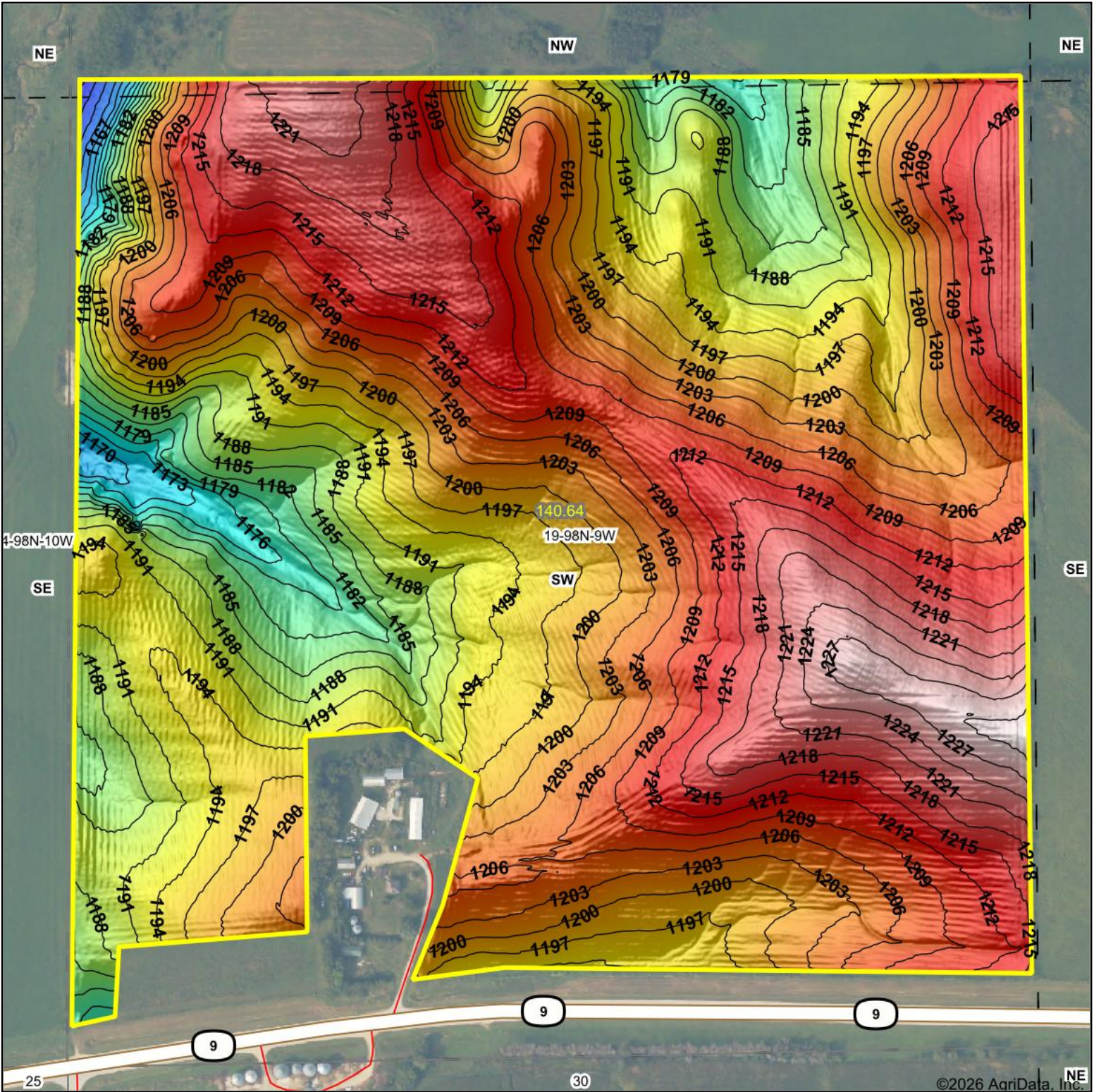


Topography Hillshade



Source: USGS 1 meter dem

Interval(ft): 3

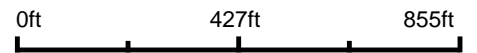
Min: 1,154.3

Max: 1,231.9

Range: 77.6

Average: 1,201.7

Standard Deviation: 12.34 ft



19-98N-9W
Winneshiek County
Iowa

Boundary Center: 43° 17' 17.03, -91° 57' 28.47



Maps Provided By:



© AgriData, Inc. 2025

www.AgriDataInc.com

©2026 AgriData, Inc.