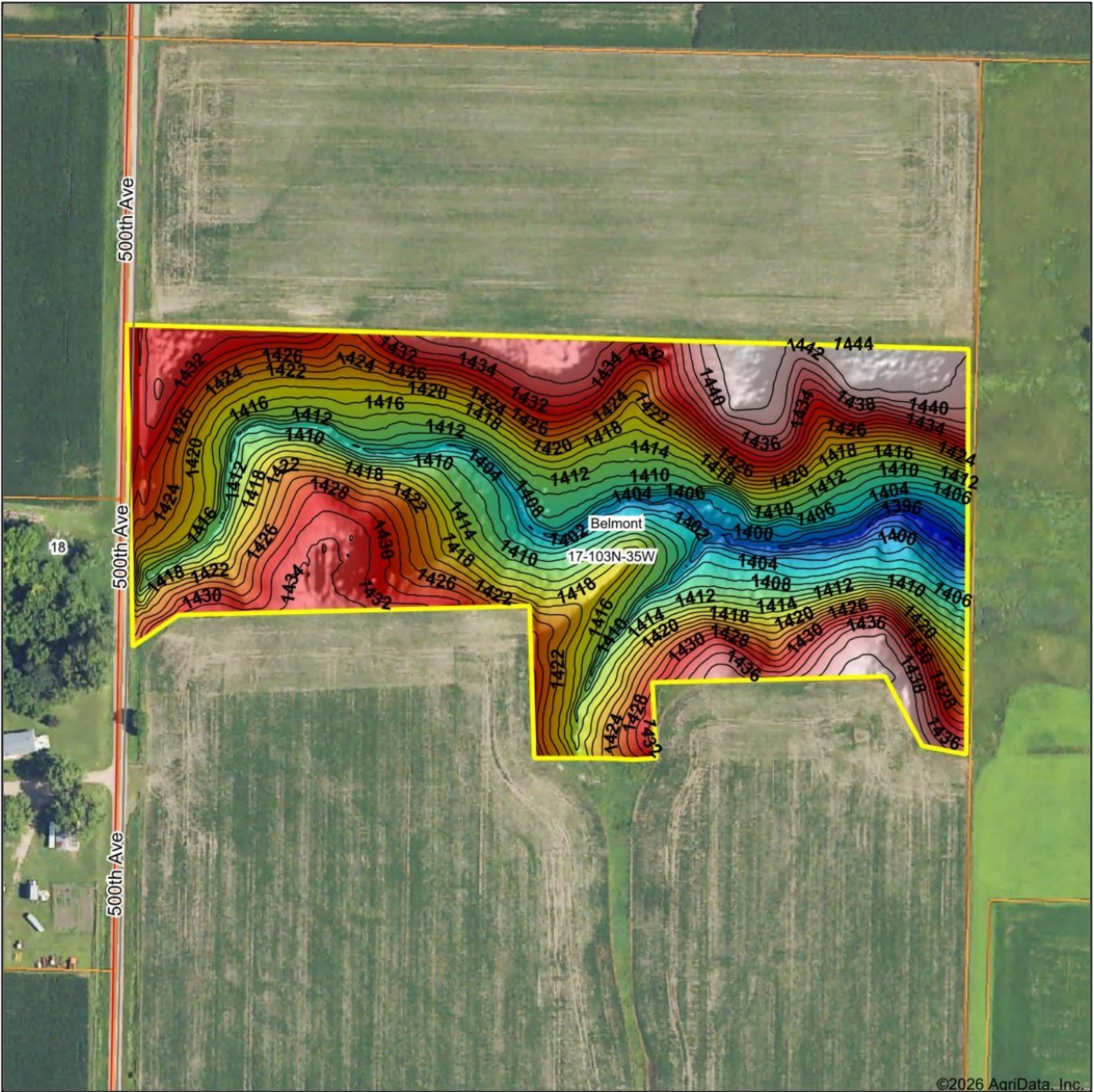
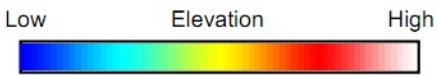


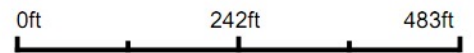
Topography Hillshade



©2026 AgriData, Inc.



Source: USGS 1 meter dem
 Interval(ft): 2
 Min: 1,391.2
 Max: 1,444.0
 Range: 52.8
 Average: 1,421.5
 Standard Deviation: 11.81 ft



17-103N-35W
Jackson County
Minnesota

Boundary Center: 43° 43' 22.05, -95° 4' 19.87