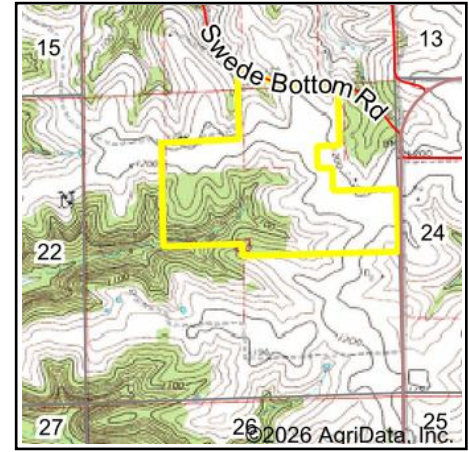
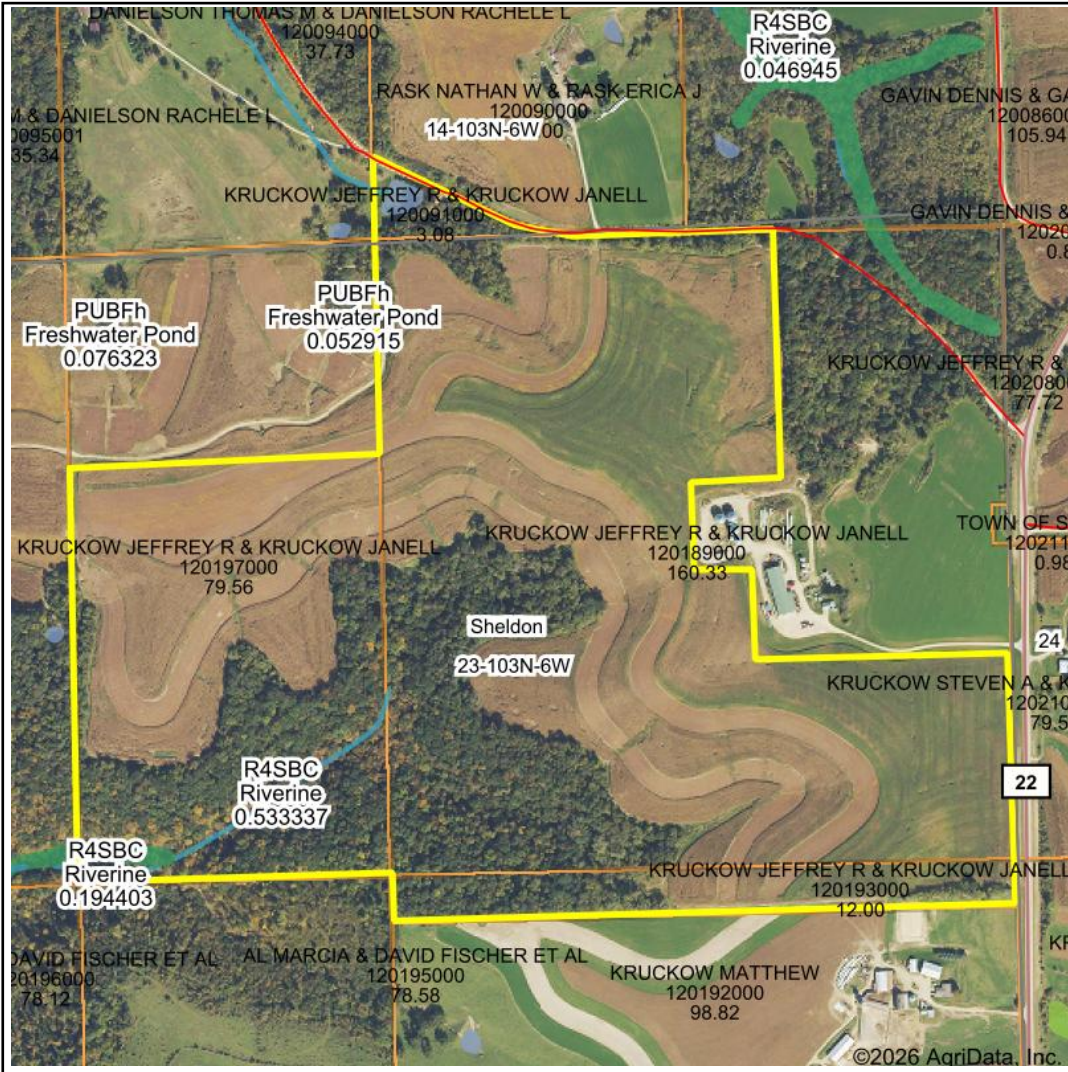


Wetlands Map



State: Minnesota
Location: 23-103N-6W
County: Houston
Township: Sheldon
Date: 4/20/2026


HIGH POINT
 LAND COMPANY
 Maps Provided By:

surety
 CUSTOMIZED ONLINE MAPPING
© AgriData, Inc. 2025 www.AgriDataInc.com



Classification Code	Type	Acres
R4SBC	Riverine	0.71
PFO1B	Freshwater Forested/Shrub Wetland	0.69
PUBFh	Freshwater Pond	0.41
Total Acres		1.81

Data Source: National Wetlands Inventory website. U.S. DoI, Fish and Wildlife Service, Washington, D.C. <http://www.fws.gov/wetlands/>