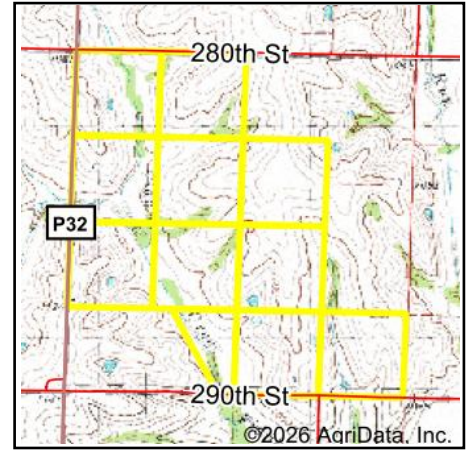
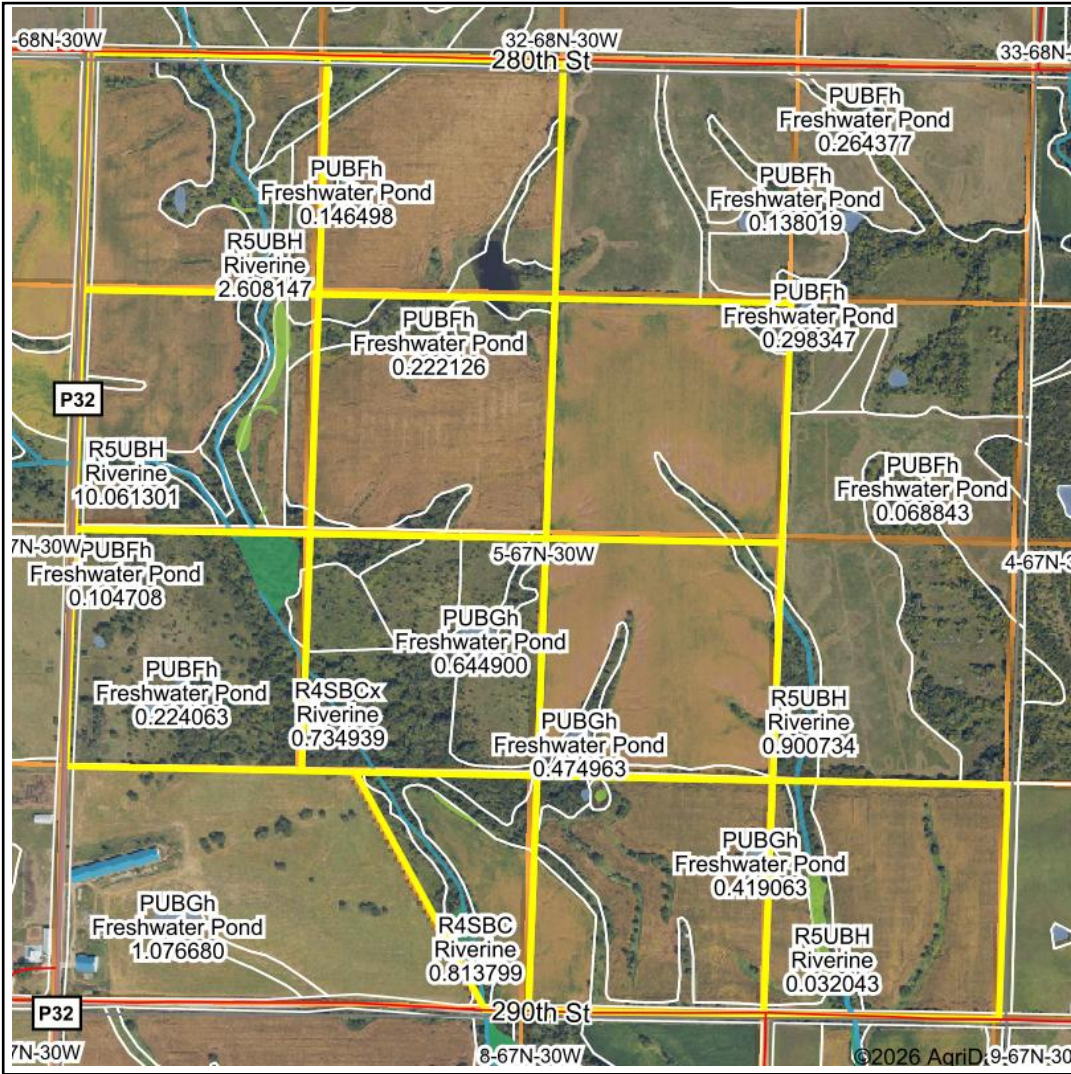


# Wetlands Map



**State:** Iowa  
**Location:** 5-67N-30W  
**County:** Ringgold  
**Township:** Middle Fork  
**Date:** 6/24/2026



Maps Provided By:



© AgriData, Inc. 2025 www.AgriDataInc.com



0ft 1222ft 2443ft

Classification Code	Type	Acres
R5UBH	Riverine	2.90
PFO1A	Freshwater Forested/Shrub Wetland	2.80
PUBGh	Freshwater Pond	1.54
PEM1C	Freshwater Emergent Wetland	1.38
PEM1B	Freshwater Emergent Wetland	1.23
PUBFh	Freshwater Pond	1.15
R4SBCx	Riverine	0.73
R4SBC	Riverine	0.48
PEM1Ch	Freshwater Emergent Wetland	0.07
Total Acres		12.28

Data Source: National Wetlands Inventory website. U.S. DoI, Fish and Wildlife Service, Washington, D.C. <http://www.fws.gov/wetlands/>