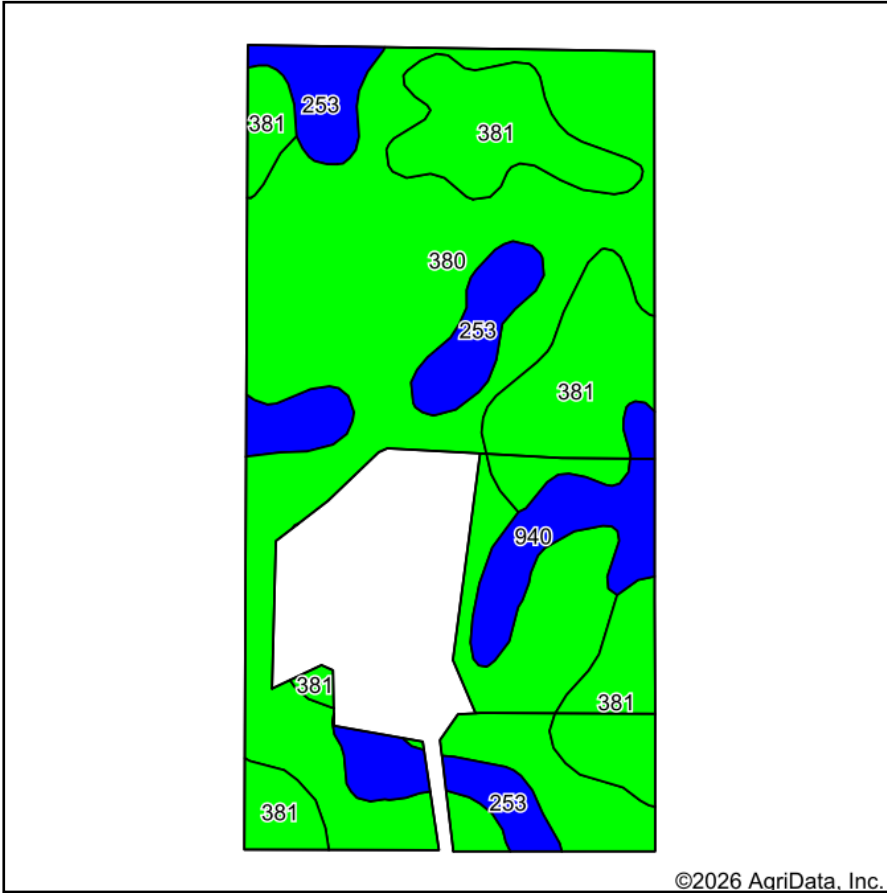
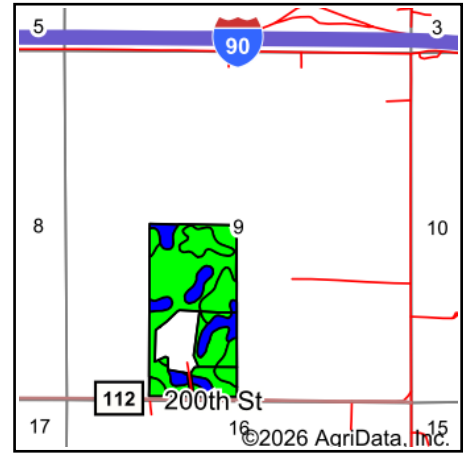


Soils Map



Soils data provided by USDA and NRCS.



State: **Minnesota**
 County: **Freeborn**
 Location: **9-102N-19W**
 Township: **Oakland**
 Acres: **67.82**
 Date: **5/4/2026**

Maps Provided By:

 CUSTOMIZED ONLINE MAPPING
 © AgriData, Inc. 2025 www.AgriDataInc.com



Area Symbol: MN047, Soil Area Version: 21

Code	Soil Description	Acres	Percent of field	PI Legend	Restrictive Layer	Soil Drainage	Non-Irr Class *c	Productivity Index	*n NCCPI Overall
380	Havana silt loam	37.71	55.6%		> 6.5ft.	Poorly drained	IIw	94	91
381	Newry silt loam, 1 to 3 percent slopes	17.53	25.8%		> 6.5ft.	Moderately well drained	Iw	95	88
253	Maxcreek silty clay loam	8.53	12.6%		> 6.5ft.	Poorly drained	IIw	88	77
940	Maxcreek-Barbert complex	4.05	6.0%		> 6.5ft.	Poorly drained	IIw	85	82
Weighted Average							1.74	93	*n 87.9

*n: The aggregation method is "Weighted Average using all components"

*c: Using Capabilities Class Dominant Condition Aggregation Method