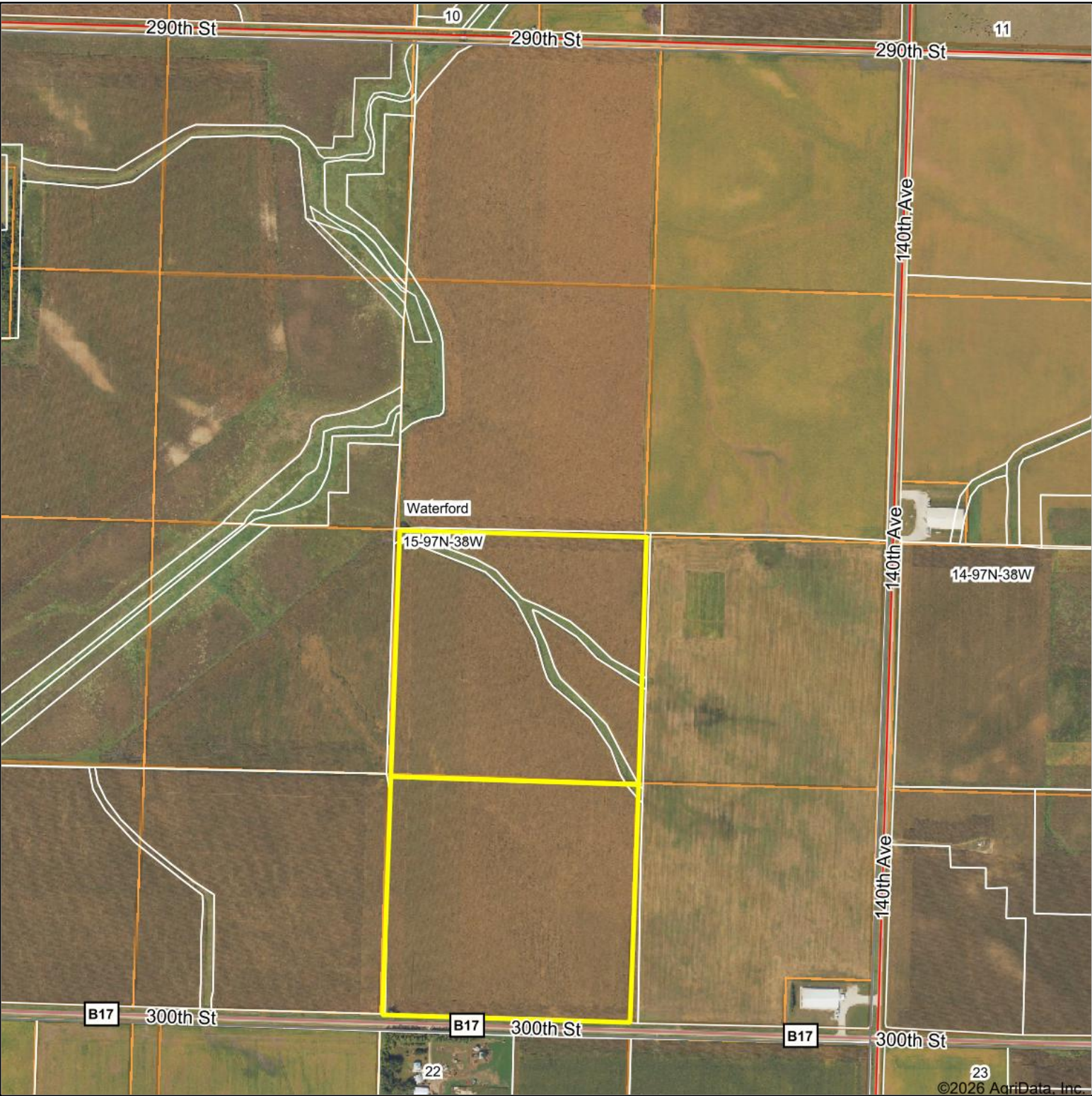
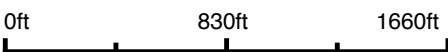


Aerial Map



Boundary Center: 43° 12' 58.41, -95° 18' 58.49



15-97N-38W
Clay County
Iowa



Maps Provided By:



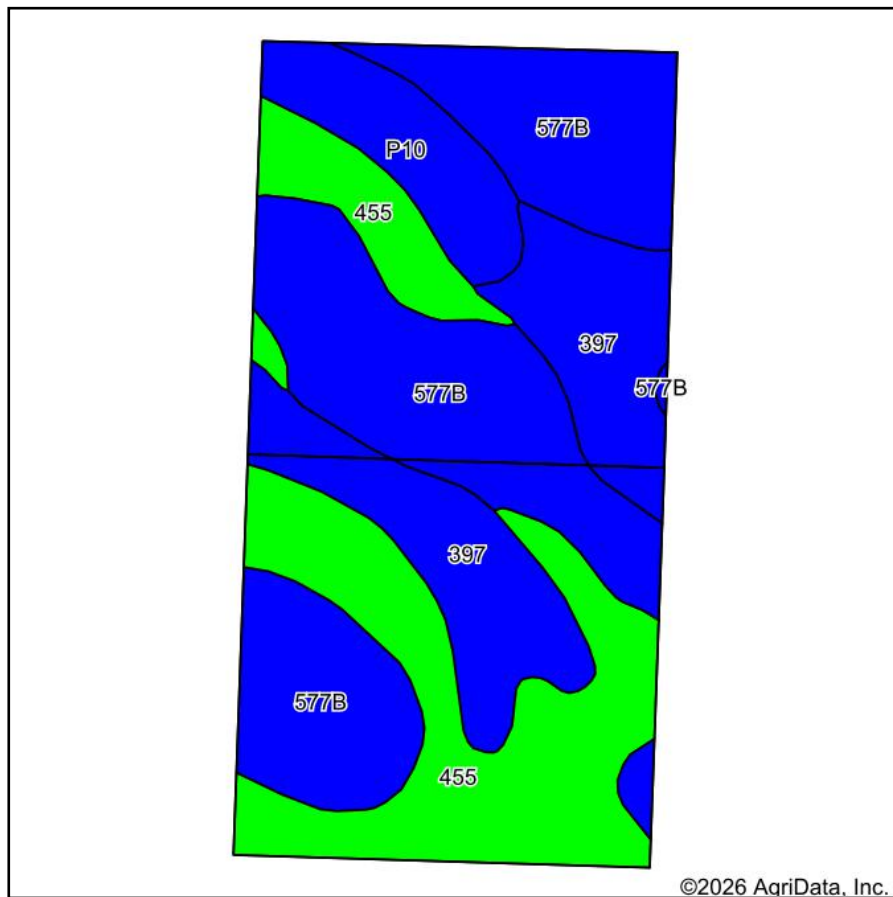
surety
CUSTOMIZED ONLINE MAPPING

© AgriData, Inc. 2025 www.AgriDataInc.com

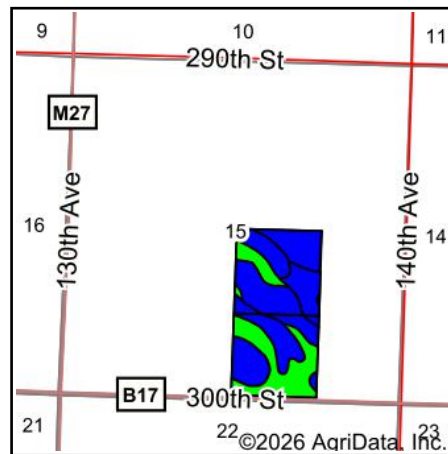
2/18/2026

Field borders provided by Farm Service Agency as of 5/21/2008.

Soils Map



Soils data provided by USDA and NRCS.



State: **Iowa**
 County: **Clay**
 Location: **15-97N-38W**
 Township: **Waterford**
 Acres: **77.97**
 Date: **1/20/2026**

Maps Provided By:

 CUSTOMIZED ONLINE MAPPING
 © AgriData, Inc. 2025 www.AgriDataInc.com



Area Symbol: IA041, Soil Area Version: 35

Code	Soil Description	Acres	Percent of field	CSR2 Legend	Restrictive Layer	Soil Drainage	Non-Irr Class *c	*i Corn Bu	*i Alfalfa Tons	*i Soybeans Bu	*i Bluegrass Tons	*i Tall Grasses Tons	*i Water-Holding Inch	CSR2**	CSR	*n NC Over
577B	Everly clay loam, 2 to 5 percent slopes	32.14	41.2%		> 6.5ft.	Moderately well drained	Ile	225.6	6.3	65.4	4.1	6.8	10.5	88	68	
455	Wilmington clay loam, 1 to 3 percent slopes	23.02	29.5%		> 6.5ft.	Somewhat poorly drained	Ie	233.6	6.1	67.7	4.2	7.0	11.2	91	74	
397	Letri clay loam, 0 to 2 percent slopes	16.66	21.4%		> 6.5ft.	Poorly drained	Ilw	224.0	4.7	65.0	4.0	6.7	11.1	90	72	
P10	Afton silty clay loam, Sheldon creek formation, 0 to 2 percent slopes, occasionally flooded	6.15	7.9%		> 6.5ft.	Poorly drained	Ilw	80.0	1.7	23.2	1.4	2.4	0.0	82		
Weighted Average							1.70	216.1	5.5	62.7	3.9	6.5	10	88.8	*-	*n

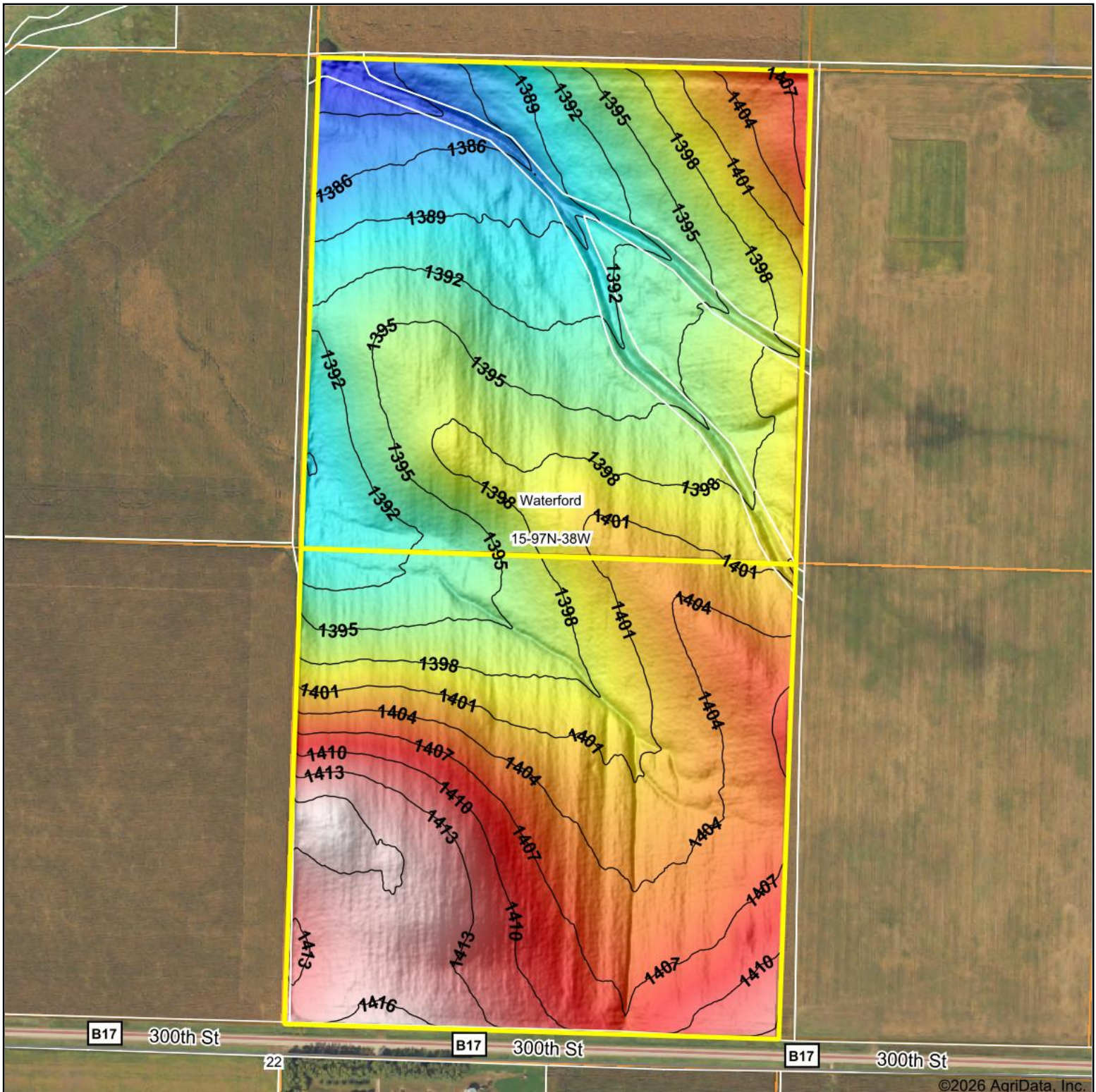
**IA has updated the CSR values for each county to CSR2.

*- CSR weighted average cannot be calculated on the current soils data, use prior data version for csr values.*i Yield data provided by the ISPAID Database version 8.1.1 developed by IA State University.

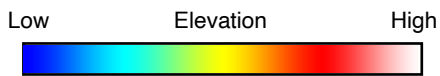
*n: The aggregation method is "Weighted Average using all components"

*c: Using Capabilities Class Dominant Condition Aggregation Method

Topography Hillshade



©2026 AgriData, Inc.



Source: USGS 1 meter dem

Interval(ft): 3

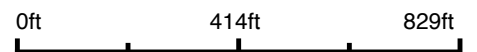
Min: 1,380.6

Max: 1,417.7

Range: 37.1

Average: 1,399.7

Standard Deviation: 8.14 ft



2/18/2026

15-97N-38W
Clay County
Iowa

Boundary Center: 43° 12' 58.41, -95° 18' 58.49

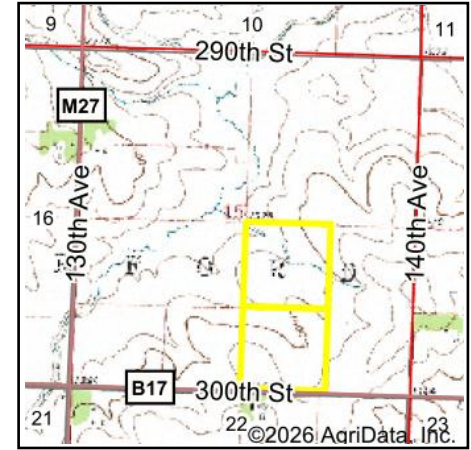
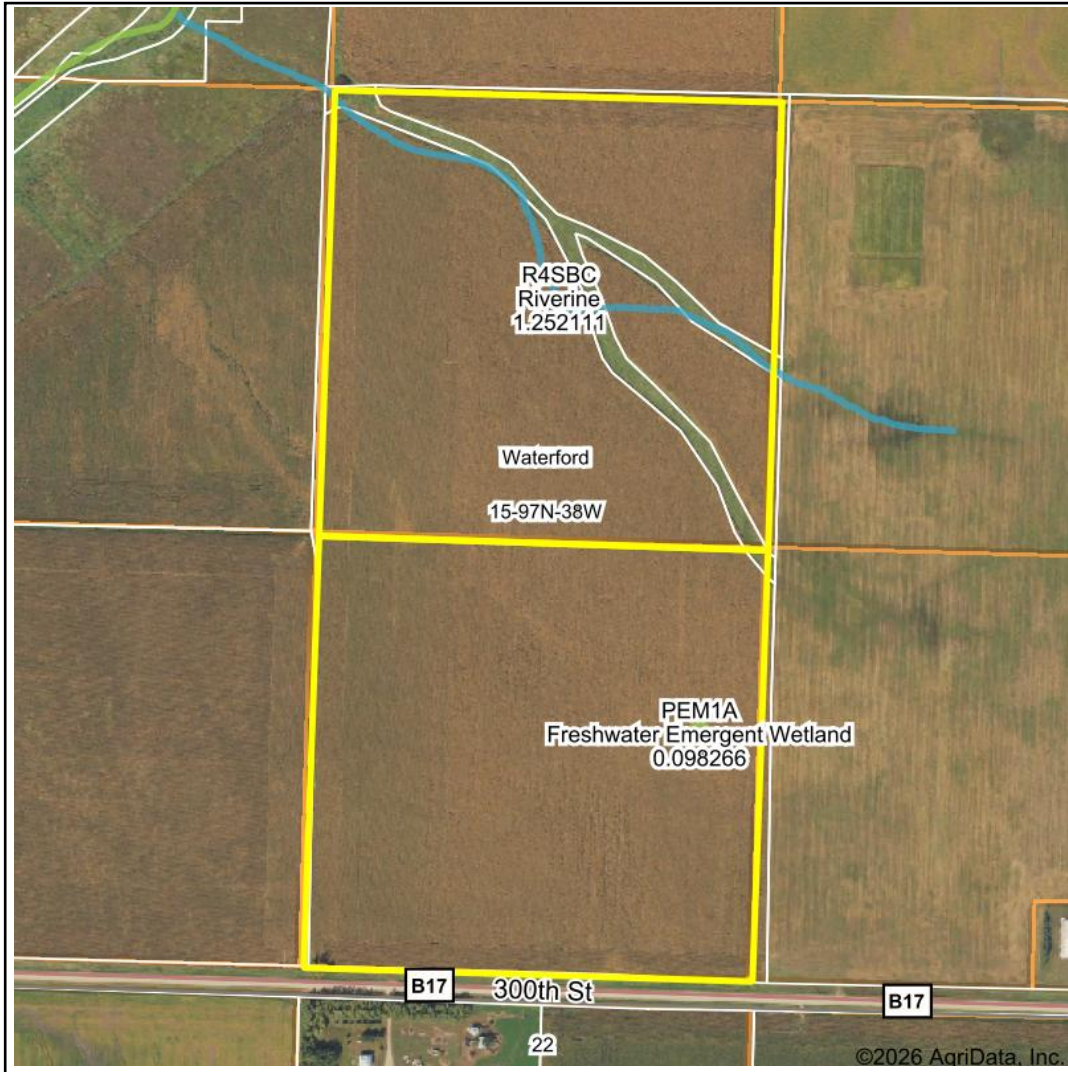
Maps Provided By:



© AgriData, Inc. 2025 www.AgriDataInc.com

Field borders provided by Farm Service Agency as of 5/21/2008.

Wetlands Map



State: **Iowa**
 Location: **15-97N-38W**
 County: **Clay**
 Township: **Waterford**
 Date: **2/18/2026**

Maps Provided By:



0ft 647ft 1293ft

	Classification Code	Type	Acres
	R4SBC	Riverine	0.75
	PEM1A	Freshwater Emergent Wetland	0.10
	Total Acres		0.85

Data Source: National Wetlands Inventory website. U.S. DoI, Fish and Wildlife Service, Washington, D.C. <http://www.fws.gov/wetlands/>