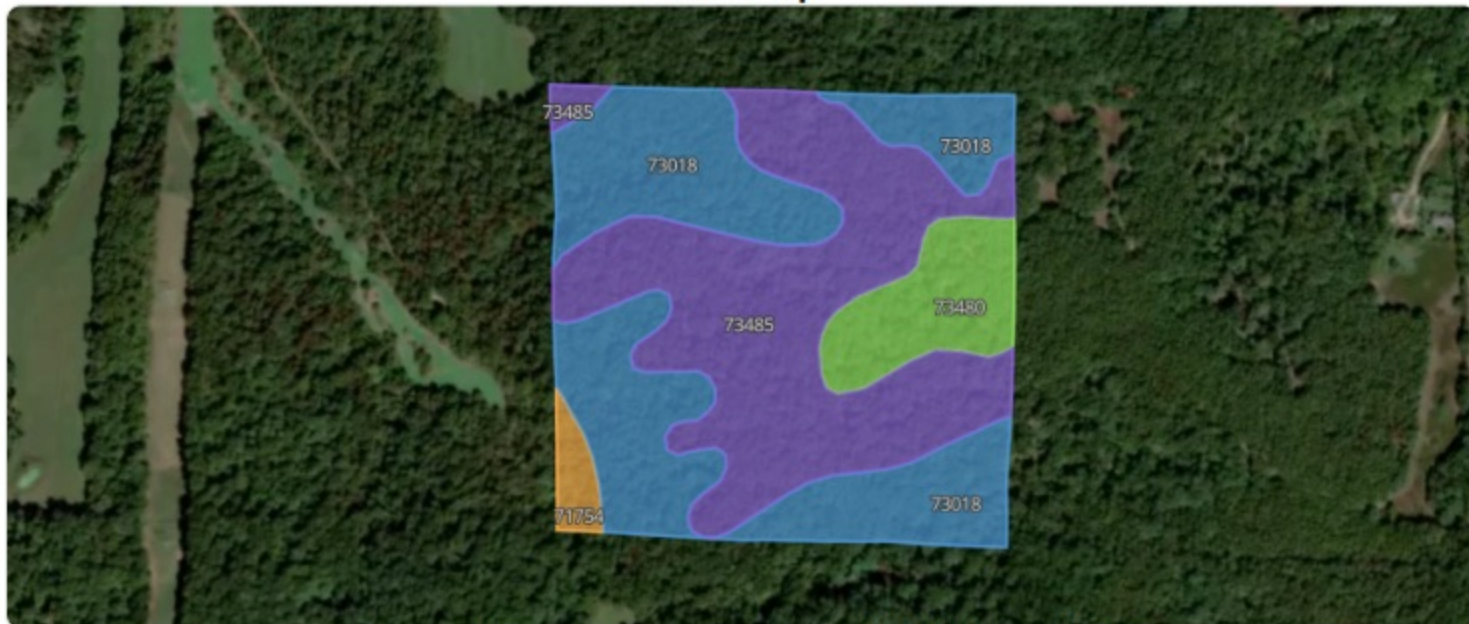






Soil Map



Acreage types displayed on map: Dryland, CRP, Irrigated

Soil Code	Soil Description	% of Map	Acres	NCCPI
 73485	Nixa-Clarksville complex, 3 to 20 percent slopes	44.67%	18.39	37
 73018	Clarksville very gravelly silt loam, 15 to 35 percent slopes	43.09%	17.74	12
 73480	Nixa very gravelly silt loam, 3 to 8 percent slopes	9.89%	4.07	30
 71754	Waben-Cedargap, occasionally flooded complex, 2 to 5 percent slopes	2.36%	0.97	43
Total			41.17	26.2

All data courtesy SSURGO database distributed by the U.S. NRCS.