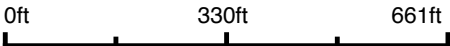


Aerial Map



Boundary Center: 43° 18' 14.83, -91° 40' 34.17



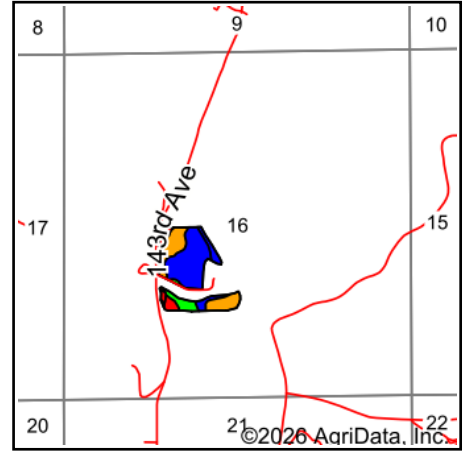
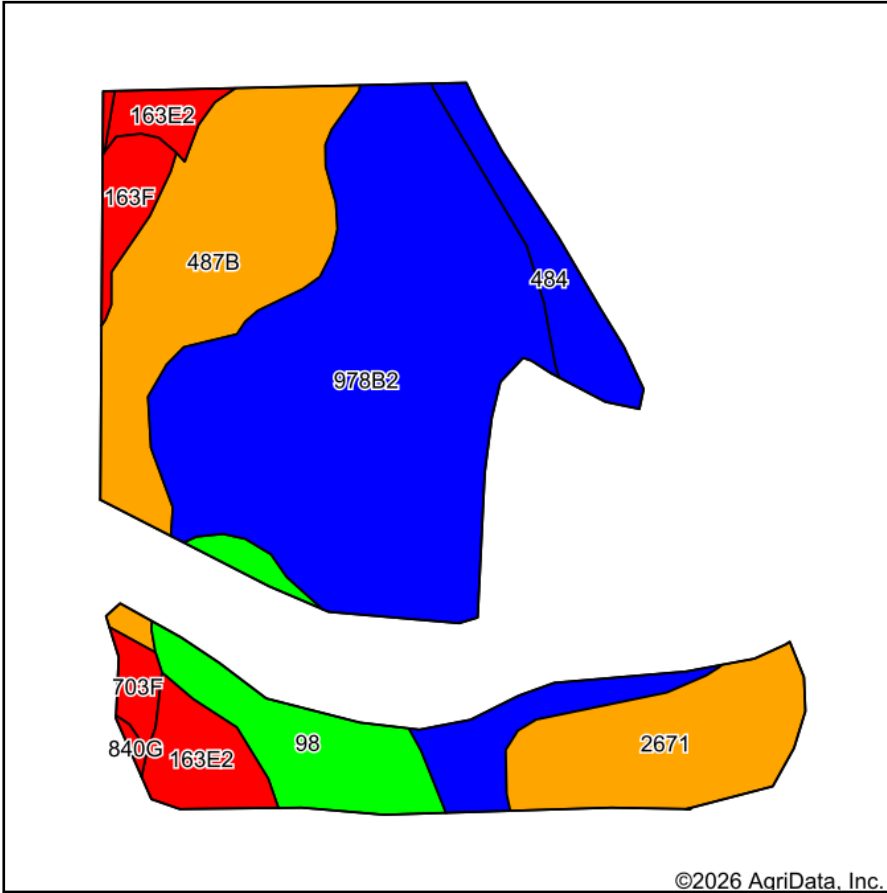
16-98N-7W
Winneshiek County
Iowa



© AgriData, Inc. 2025 www.AgriDataInc.com

4/20/2026

Soils Map



State: **Iowa**
 County: **Winneshiek**
 Location: **16-98N-7W**
 Township: **Glenwood**
 Acres: **20.81**
 Date: **4/20/2026**



Maps Provided By:



© AgriData, Inc. 2025

www.AgriDataInc.com



Soils data provided by USDA and NRCS.

©2026 AgriData, Inc.

Area Symbol: IA191, Soil Area Version: 34

Code	Soil Description	Acres	Percent of field	CSR2 Legend	Restrictive Layer	Soil Drainage	Non-Irr Class *c	*i Corn Bu	*i Alfalfa Tons	*i Soybeans Bu	*i Bluegrass Tons	*i Tall Grasses Tons	*i Water-Holding Inch	CSR2**
978B2	Festina silt loam, 1 to 6 percent slopes, moderately eroded	9.97	47.9%		> 6.5ft.	Well drained	Ile							84
487B	Otter-Worthen complex, 1 to 4 percent slopes	3.81	18.3%		> 6.5ft.	Poorly drained	Ilw	201.6	4.2	58.5	3.6	6.0	12.5	79
2671	Ion-Eitzen complex, 0 to 2 percent slopes, occasionally flooded	2.31	11.1%		> 6.5ft.	Moderately well drained	Ilw	211.2	5.9	61.2	3.8	6.3	12.8	76
98	Huntsville silt loam, 0 to 2 percent slopes, occasionally flooded	1.70	8.2%		> 6.5ft.	Well drained	Ilw	228.8	6.4	66.4	4.1	6.9	13.0	93
163E2	Fayette silt loam, 14 to 18 percent slopes, moderately eroded	1.14	5.5%		> 6.5ft.	Well drained	Ive	140.8	3.9	40.8	2.5	4.2	11.6	35

Soils data provided by USDA and NRCS.



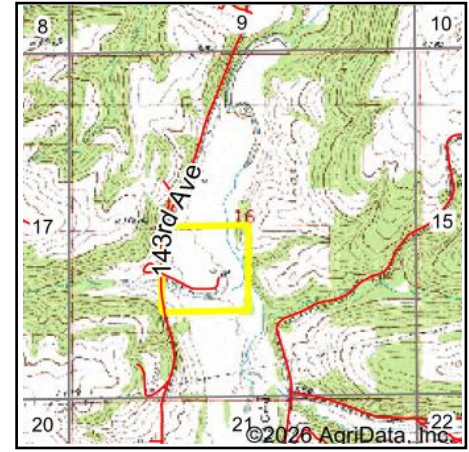
Code	Soil Description	Acres	Percent of field	CSR2 Legend	Restrictive Layer	Soil Drainage	Non-Irr Class *c	*i Corn Bu	*i Alfalfa Tons	*i Soybeans Bu	*i Bluegrass Tons	*i Tall Grasses Tons	*i Water-Holding Inch	CSR2**	
484	Lawson silt loam, 1 to 3 percent slopes, occasionally flooded	1.05	5.0%		> 6.5ft.	Somewhat poorly drained	Ilw	219.2	5.7	63.6	3.9	6.6	12.2	83	
163F	Fayette silt loam, 18 to 25 percent slopes	0.49	2.4%		> 6.5ft.	Well drained	Vle	121.6	3.4	35.3	2.2	3.6	11.6	21	
703F	Dubuque silt loam, 18 to 25 percent slopes	0.27	1.3%		2.3ft. (Lithic bedrock)	Well drained	Vle							6	
840G	Lacrescent cobbly silty clay loam, 18 to 45 percent slopes	0.07	0.3%		> 6.5ft.	Well drained	Vlle	88.0	2.5	25.5	1.6	2.6	6.0	5	
Weighted Average								2.27	101	2.5	29.3	1.8	3	6.3	77.4

**IA has updated the CSR values for each county to CSR2.

*i Yield data provided by the ISPAID Database version 8.1.1 developed by IA State University.

*c: Using Capabilities Class Dominant Condition Aggregation Method

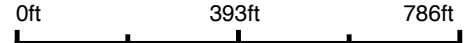
Wetlands Map



State: Iowa
Location: 16-98N-7W
County: Winneshiek
Township: Glenwood
Date: 4/20/2026


HIGH POINT
 LAND COMPANY
 Maps Provided By:

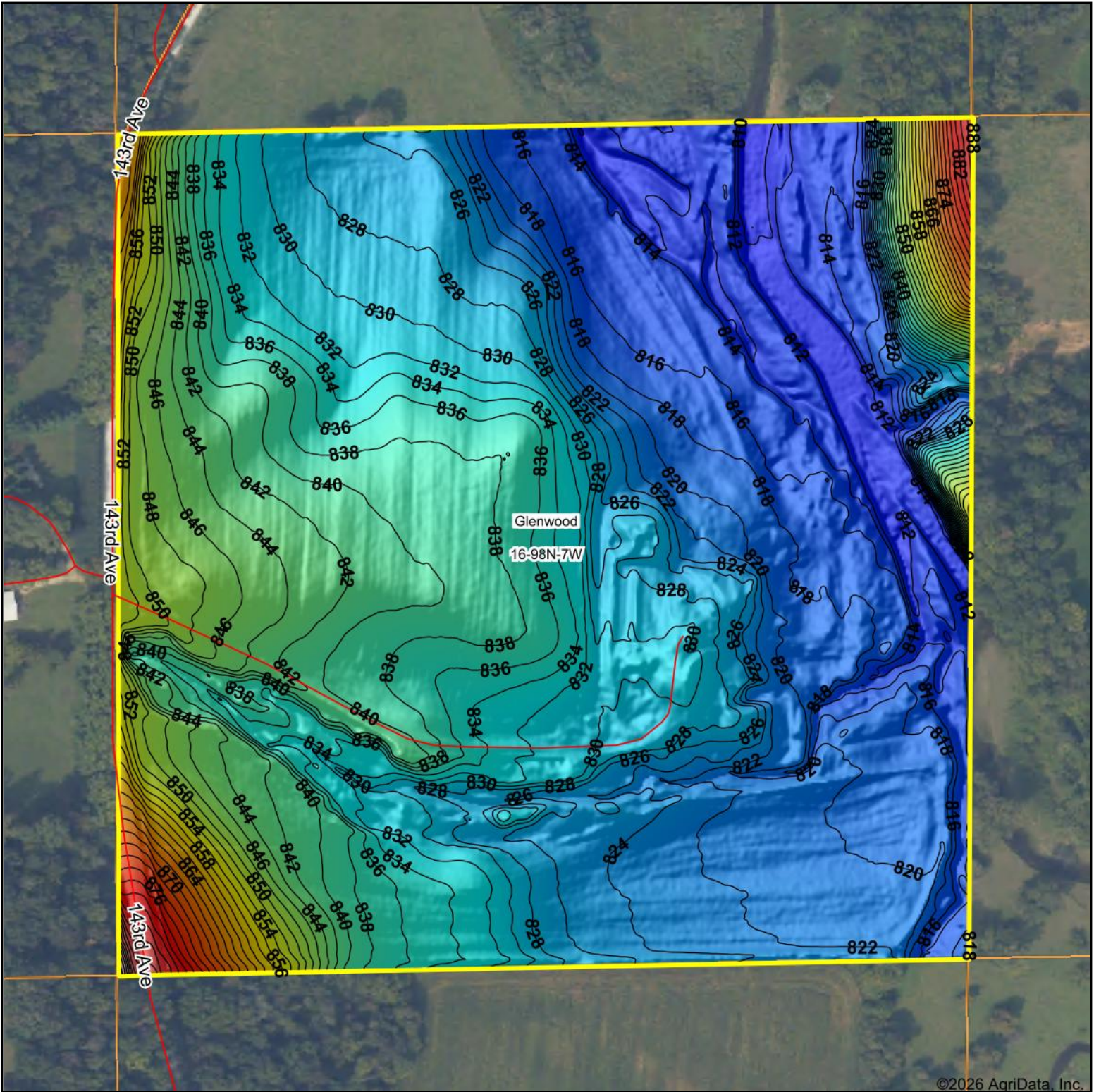
surety
 CUSTOMIZED ONLINE MAPPING
© AgriData, Inc. 2025 www.AgriDataInc.com



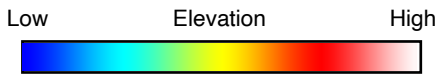
Classification Code	Type	Acres
PEM1C	Freshwater Emergent Wetland	0.64
R2UBG	Riverine	0.55
Total Acres		1.19

Data Source: National Wetlands Inventory website. U.S. DoI, Fish and Wildlife Service, Washington, D.C. <http://www.fws.gov/wetlands/>

Topography Hillshade



©2026 AgriData, Inc.



Maps Provided By:



© AgriData, Inc. 2025 www.AgriDataInc.com

Source: USGS 1 meter dem

Interval(ft): 2

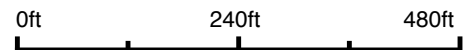
Min: 809.1

Max: 904.4

Range: 95.3

Average: 830.7

Standard Deviation: 14.11 ft



4/20/2026

16-98N-7W
Winneshiek County
Iowa

Boundary Center: 43° 18' 14.83, -91° 40' 34.17