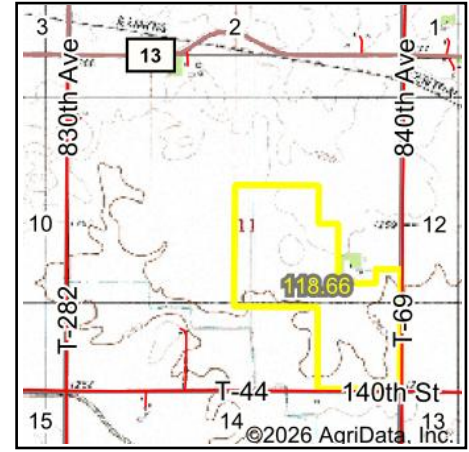
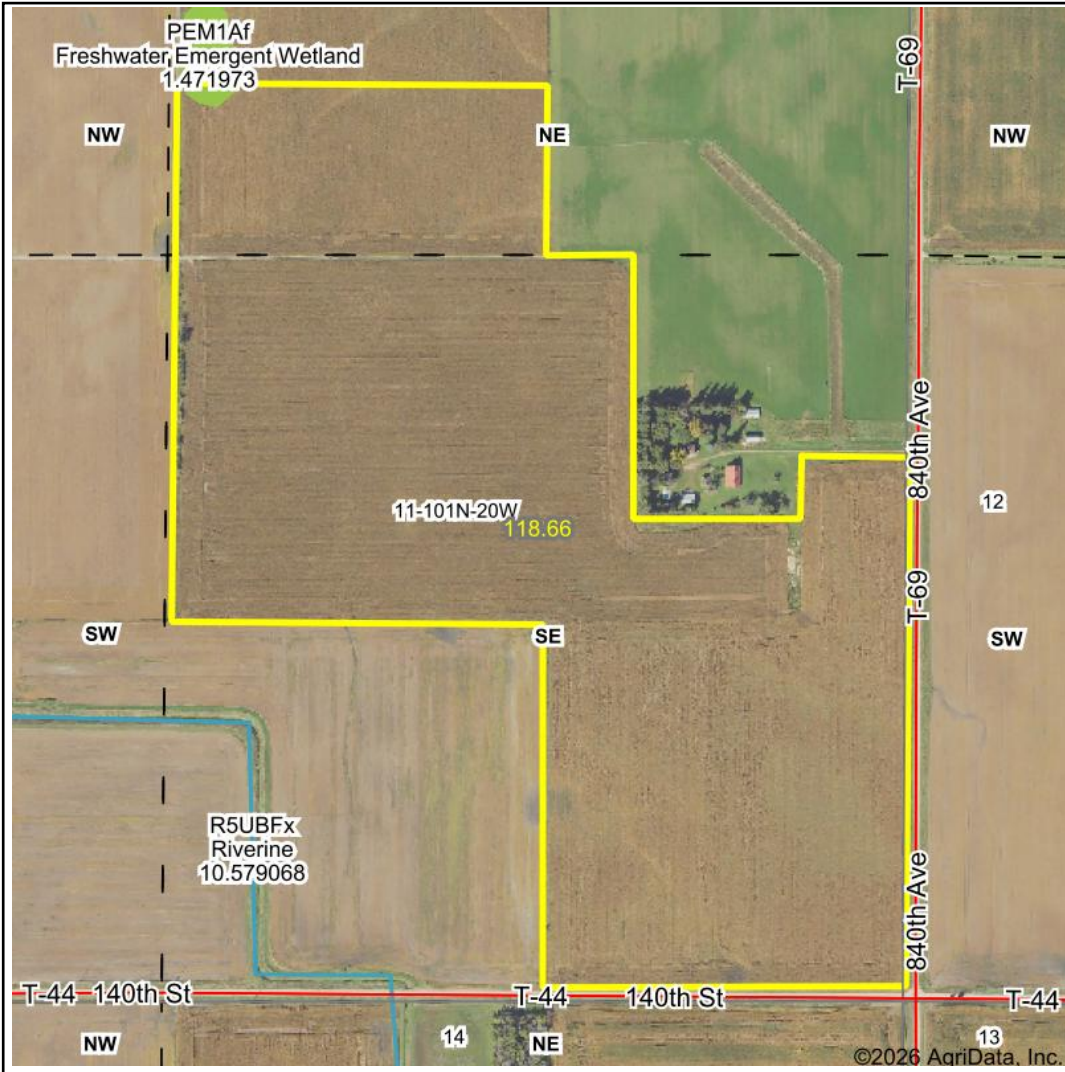
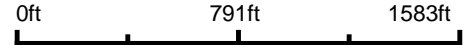


# Wetlands Map



State: **Minnesota**  
 Location: **11-101N-20W**  
 County: **Freeborn**  
 Township: **Shell Rock**  
 Date: **3/25/2026**



Classification Code	Type	Acres
PEM1Af	Freshwater Emergent Wetland	0.27
Total Acres		0.27

Data Source: National Wetlands Inventory website. U.S. DoI, Fish and Wildlife Service, Washington, D.C. <http://www.fws.gov/wetlands/>