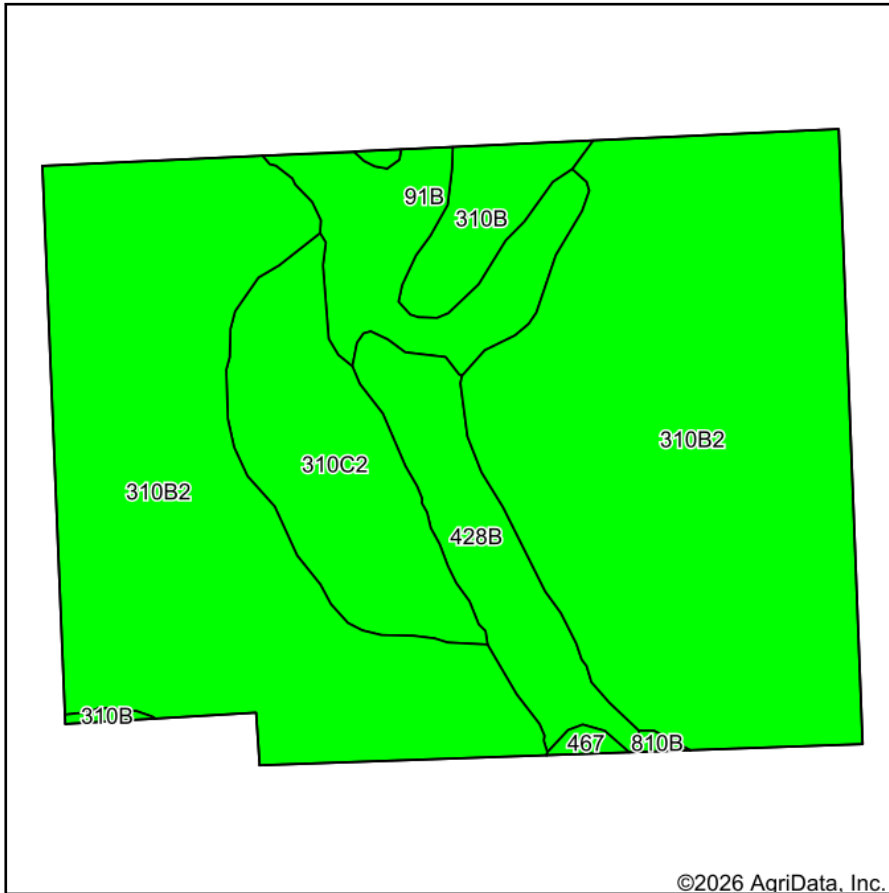
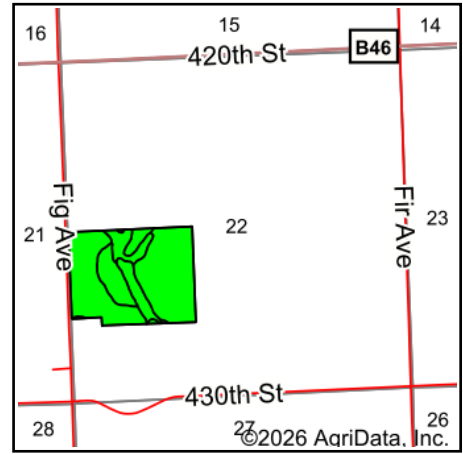


# Soils Map



Soils data provided by USDA and NRCS.



State: **Iowa**  
 County: **Sioux**  
 Location: **22-95N-46W**  
 Township: **Center**  
 Acres: **65**  
 Date: **3/24/2026**



Maps Provided By:



© AgriData, Inc. 2025

www.AgriDataInc.com



Area Symbol: IA167, Soil Area Version: 35

Code	Soil Description	Acres	Percent of field	CSR2 Legend	Non-Irr Class *c	CSR2**	CSR	*n NCCPI Overall	*n NCCPI Corn	*n NCCPI Small Grains	*n NCCPI Soybeans	
310B2	Galva silty clay loam, 2 to 5 percent slopes, eroded	46.63	71.9%		Ile	90	65	70	70	65	67	
310C2	Galva silty clay loam, 5 to 9 percent slopes, eroded	6.77	10.4%		IIle	84	51	67	67	64	65	
91B	Primghar silty clay loam, 2 to 5 percent slopes	4.58	7.0%		Ile	95	75	78	74	74	78	
428B	Ely silty clay loam, shallow loess, 2 to 5 percent slopes	4.51	6.9%		Ile	88	70	90	90	71	74	
310B	Galva silty clay loam, 2 to 5 percent slopes	2.21	3.4%		Ile	95	67	75	74	72	75	
467	Radford silt loam, 0 to 2 percent slopes	0.21	0.3%		IIw	79	73	83	76	51	83	
810B	Galva silty clay loam, terrace, 2 to 5 percent slopes	0.09	0.1%		Ile	95	65	76	75	75	76	
<b>Weighted Average</b>						<b>2.10</b>	<b>89.7</b>	<b>64.7</b>	<b>*n 71.9</b>	<b>*n 71.5</b>	<b>*n 66.2</b>	<b>*n 68.4</b>

\*\*IA has updated the CSR values for each county to CSR2.

\*n: The aggregation method is "Weighted Average using all components"

\*c: Using Capabilities Class Dominant Condition Aggregation Method

Soils data provided by USDA and NRCS.