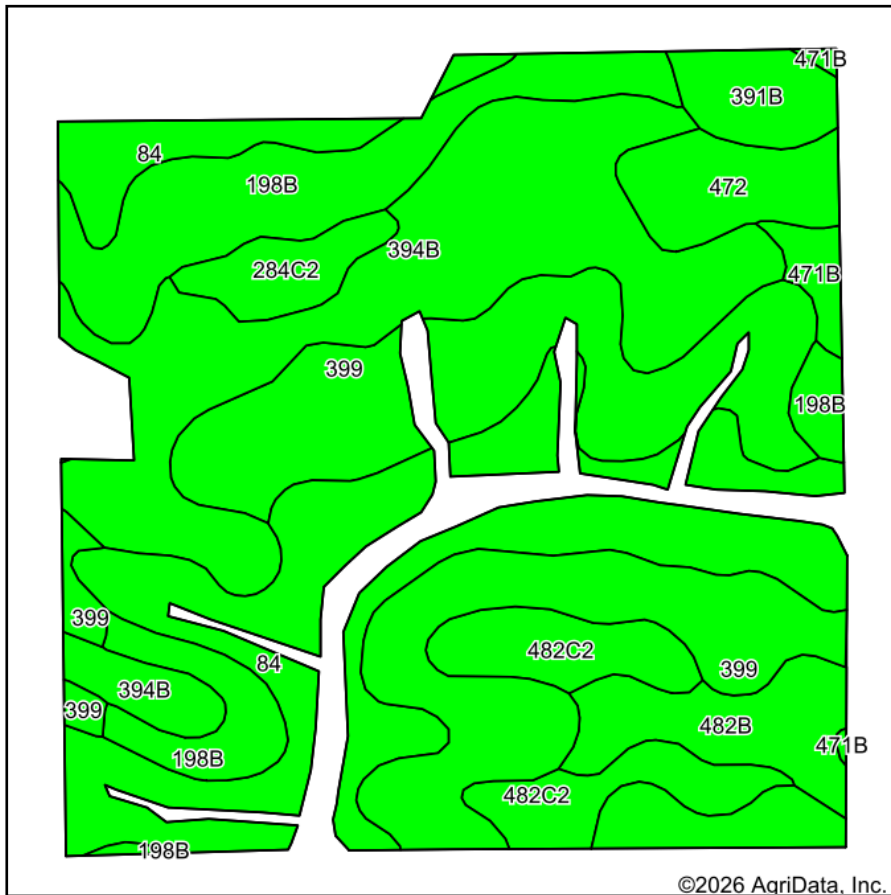
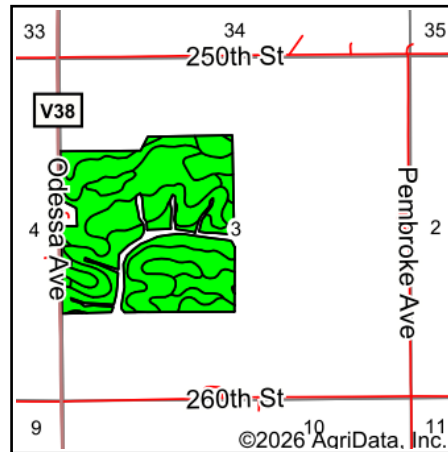


# Soils Map



Soils data provided by USDA and NRCS.



State: **Iowa**  
 County: **Chickasaw**  
 Location: **3-94N-12W**  
 Township: **Dresden**  
 Acres: **143.14**  
 Date: **6/1/2026**



Maps Provided By:



© AgriData, Inc. 2025

www.AgriDataInc.com



Area Symbol: IA037, Soil Area Version: 31

Code	Soil Description	Acres	Percent of field	CSR2 Legend	Non-Irr Class *c	CSR2**	CSR	
399	Readlyn silt loam, 1 to 3 percent slopes	38.79	27.1%		Iw	91	89	
84	Clyde clay loam, 0 to 3 percent slopes	31.09	21.7%		IIw	88	74	
394B	Ostrander loam, 2 to 5 percent slopes	28.34	19.8%		Ile	88	84	
198B	Floyd loam, 1 to 4 percent slopes	17.04	11.9%		IIw	89	74	
482C2	Racine loam, 5 to 9 percent slopes, moderately eroded	8.38	5.9%		IIIle	76	62	
482B	Racine loam, 2 to 5 percent slopes	6.16	4.3%		Ile	76	79	
472	Havana loam, 0 to 2 percent slopes	5.02	3.5%		IIw	76	74	
391B	Clyde-Floyd complex, 1 to 4 percent slopes	3.48	2.4%		IIw	87	72	
284C2	Flagler sandy loam, 5 to 9 percent slopes, moderately eroded	3.18	2.2%		IIIle	41	25	
471B	Oran loam, 2 to 5 percent slopes	1.66	1.2%		Iw	74	79	
<b>Weighted Average</b>						<b>1.80</b>	<b>86.1</b>	<b>78.5</b>

\*\*IA has updated the CSR values for each county to CSR2.

\*c: Using Capabilities Class Dominant Condition Aggregation Method

Soils data provided by USDA and NRCS.