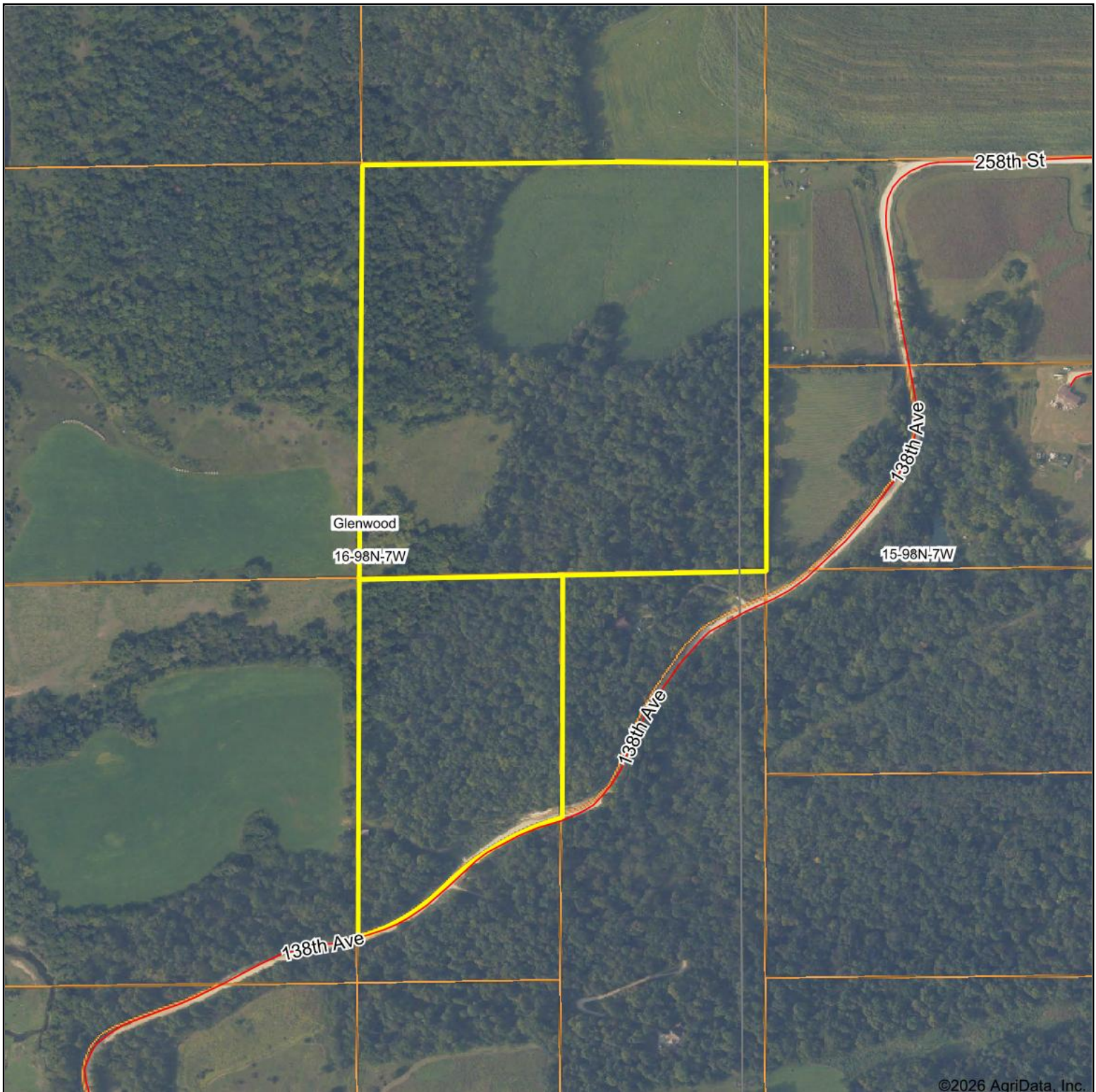


Aerial Map



©2026 AgriData, Inc.

Boundary Center: 43° 18' 22.23, -91° 39' 58.41



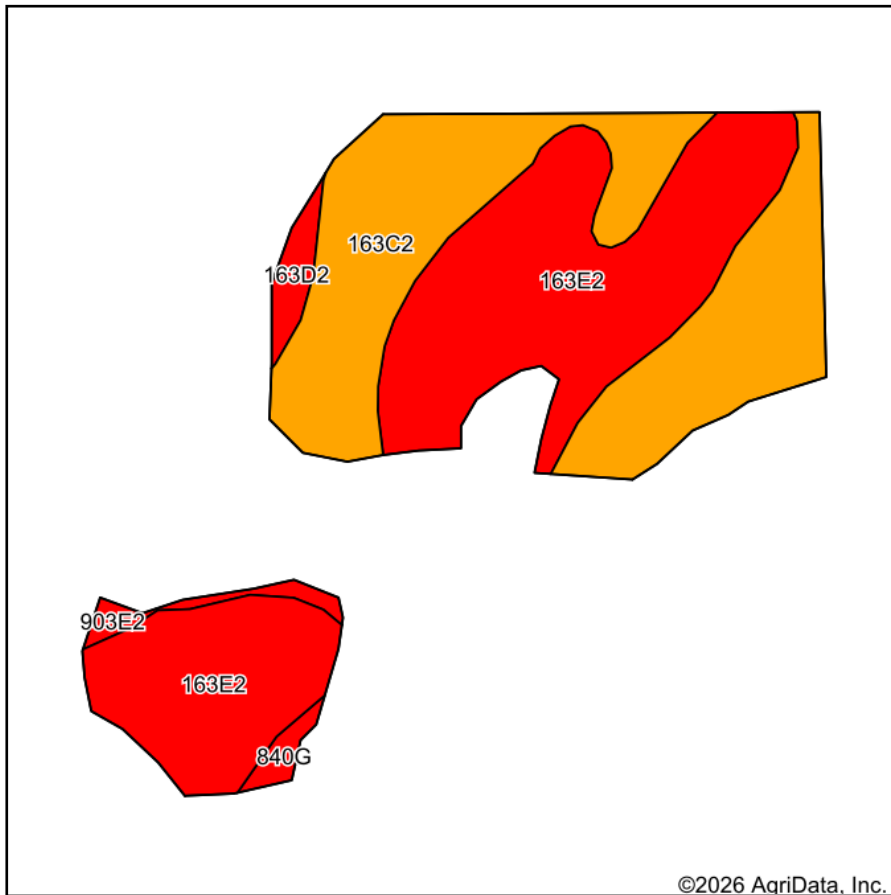
16-98N-7W
Winneshiek County
Iowa



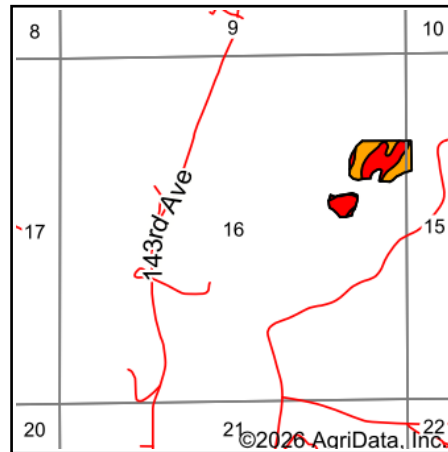
Maps Provided By:
surety
CUSTOMIZED ONLINE MAPPING
© AgriData, Inc. 2025 www.AgriDataInc.com

4/20/2026

Soils Map



Soils data provided by USDA and NRCS.



State: **Iowa**
 County: **Winneshiek**
 Location: **16-98N-7W**
 Township: **Glenwood**
 Acres: **13.99**
 Date: **4/20/2026**



Maps Provided By:



© AgriData, Inc. 2025

www.AgriDataInc.com



Area Symbol: IA191, Soil Area Version: 34

Code	Soil Description	Acres	Percent of field	CSR2 Legend	Restrictive Layer	Soil Drainage	Non-Irr Class *c	*i Corn Bu	*i Alfalfa Tons	*i Soybeans Bu	*i Bluegrass Tons	*i Tall Grasses Tons	*i Water-Holding Inch	CSR2**
163E2	Fayette silt loam, 14 to 18 percent slopes, moderately eroded	7.22	51.7%		> 6.5ft.	Well drained	IVe	140.8	3.9	40.8	2.5	4.2	11.6	35
163C2	Fayette silt loam, 5 to 9 percent slopes, moderately eroded	6.06	43.3%		> 6.5ft.	Well drained	IIIe	193.6	5.4	56.1	3.5	5.8	11.6	72
840G	Lacrescent cobbly silty clay loam, 18 to 45 percent slopes	0.31	2.2%		> 6.5ft.	Well drained	VIIe	88.0	2.5	25.5	1.6	2.6	6.0	5
163D2	Fayette silt loam, 9 to 14 percent slopes, moderately eroded	0.30	2.1%		> 6.5ft.	Well drained	IIIe	164.8	4.6	47.8	3.0	4.9	11.6	46

Soils data provided by USDA and NRCS.



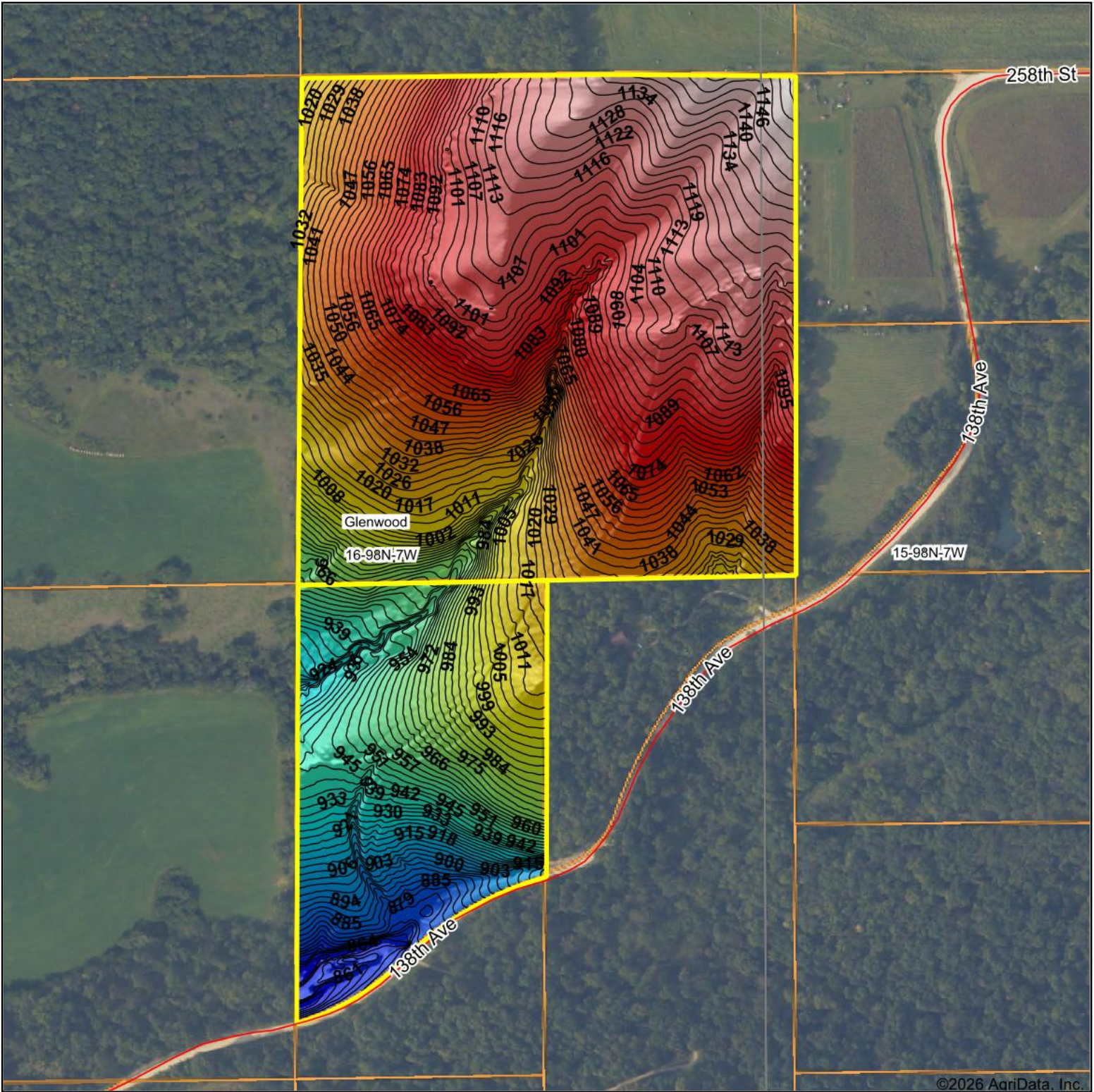
Code	Soil Description	Acres	Percent of field	CSR2 Legend	Restrictive Layer	Soil Drainage	Non-Irr Class *c	*i Corn Bu	*i Alfalfa Tons	*i Soybeans Bu	*i Bluegrass Tons	*i Tall Grasses Tons	*i Water-Holding Inch	CSR2**	
903E2	Frankville silt loam, 14 to 18 percent slopes, moderately eroded	0.10	0.7%		2.5ft. (Lithic bedrock)	Well drained	IVe	88.0	2.5	25.5	1.6	2.6	5.2	11	
Weighted Average								3.61	162.6	4.5	47.1	2.9	4.9	11.4	50.4

**IA has updated the CSR values for each county to CSR2.

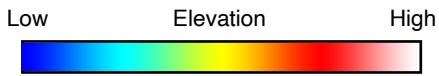
*i Yield data provided by the ISPAID Database version 8.1.1 developed by IA State University.

*c: Using Capabilities Class Dominant Condition Aggregation Method

Topography Hillshade



©2026 AgriData, Inc.



Maps Provided By:



© AgriData, Inc. 2025 www.AgriDataInc.com

Source: USGS 1 meter dem

Interval(ft): 3

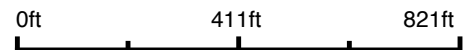
Min: 849.7

Max: 1,156.0

Range: 306.3

Average: 1,038.4

Standard Deviation: 72.54 ft

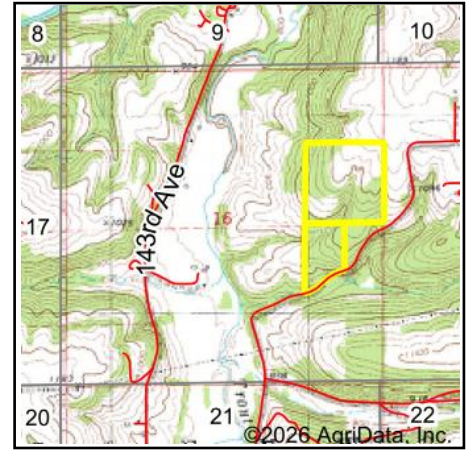
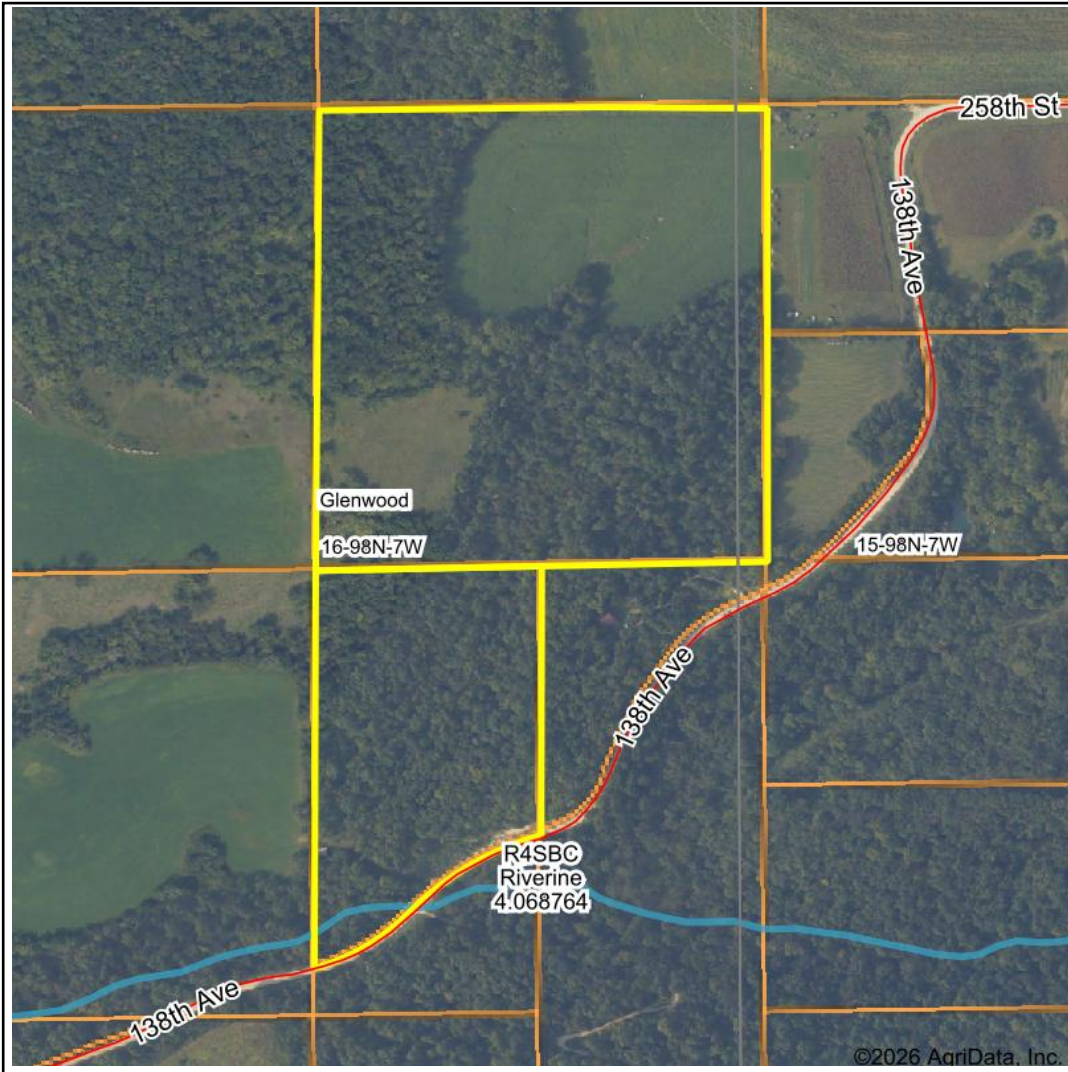


4/20/2026

16-98N-7W
Winneshiek County
Iowa

Boundary Center: 43° 18' 22.23, -91° 39' 58.41

Wetlands Map



State: Iowa
Location: 16-98N-7W
County: Winneshiek
Township: Glenwood
Date: 4/20/2026



Maps Provided By:



© AgriData, Inc. 2025 www.AgriDataInc.com



Classification Code	Type	Acres
R4SBC	Riverine	0.14
Total Acres		0.14

Data Source: National Wetlands Inventory website. U.S. DoI, Fish and Wildlife Service, Washington, D.C. <http://www.fws.gov/wetlands/>