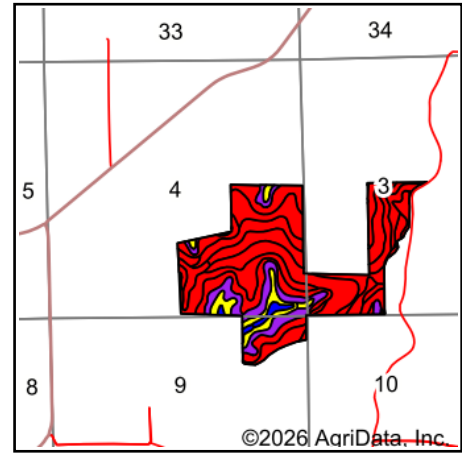
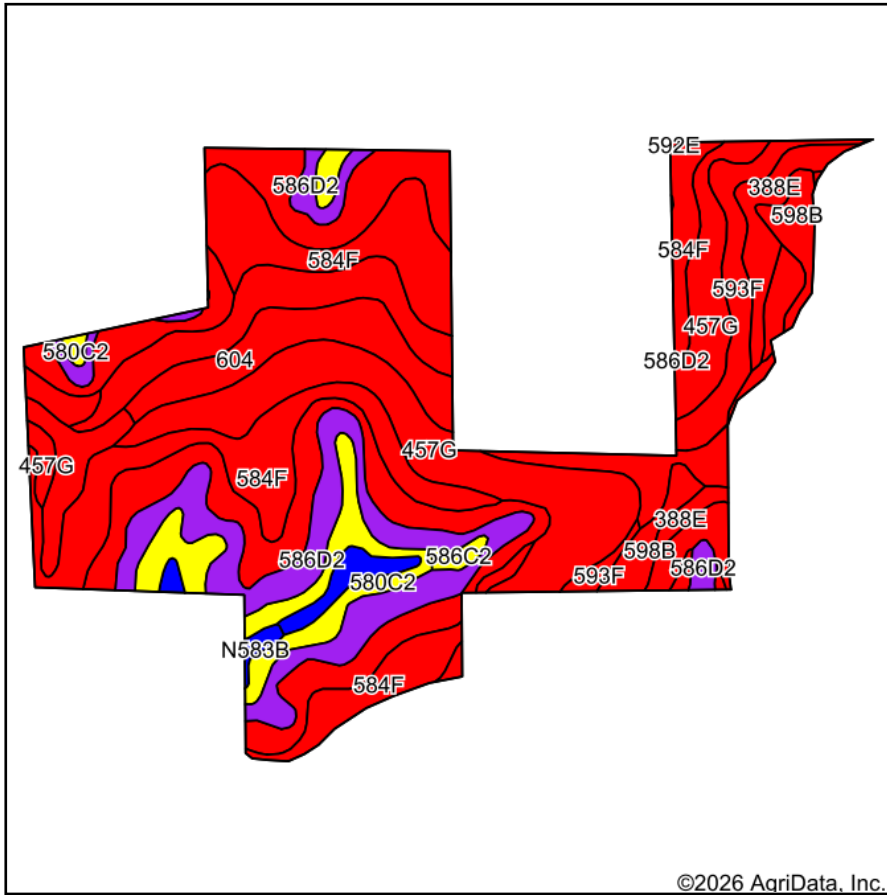


# Tolo Farms LLC Soils Map



State: **Minnesota**  
 County: **Houston**  
 Location: **4-102N-4W**  
 Township: **Brownsville**  
 Acres: **216.87**  
 Date: **4/6/2026**

©2026 AgriData, Inc.

Maps Provided By:  
  
 CUSTOMIZED ONLINE MAPPING  
 © AgriData, Inc. 2025 www.AgriDataInc.com



Soils data provided by USDA and NRCS.

Area Symbol: MN055, Soil Area Version: 20									
Code	Soil Description	Acres	Percent of field	PI Legend	Restrictive Layer	Soil Drainage	Non-Irr Class *c	Productivity Index	*n NCCPI Overall
457G	Lacrescent cobbly silty clay loam, 45 to 70 percent slopes	48.60	22.4%		> 6.5ft.	Well drained	Vllc	1	13
584F	Lamoille-Dorerton silt loams, 30 to 45 percent slopes	42.95	19.8%		> 6.5ft.	Well drained	Vllc	4	15
592E	Lamoille-Elbaville silt loams, 20 to 30 percent slopes	38.26	17.6%		> 6.5ft.	Well drained	Vlc	13	17
586D2	Nodine-Rollingstone silt loams, 12 to 20 percent slopes, eroded	24.73	11.4%		> 6.5ft.	Well drained	IVc	52	61
604	Huntsville-Beavercreek silt loams, channeled	16.31	7.5%		> 6.5ft.	Well drained	IIw	20	57
580C2	Blackhammer-Southridge complex, 6 to 12 percent slopes, moderately eroded	11.66	5.4%		2.7ft. (Abrupt textural change)	Well drained	IIIc	70	72
598B	Beavercreek-Arenzville complex, 1 to 12 percent slopes	11.61	5.4%		> 6.5ft.	Well drained	VIc	20	58
593F	Elbaville silt loam, 30 to 45 percent slopes	8.55	3.9%		> 6.5ft.	Well drained	Vllc	5	16
388E	Churchtown silt loam, 20 to 30 percent slopes, moderately eroded	6.29	2.9%		> 6.5ft.	Well drained	Vlc	30	20
580B	Blackhammer-Southridge complex, 2 to 6 percent slopes	2.60	1.2%		2.7ft. (Abrupt textural change)	Well drained	IIc	87	79
N621B	Volney channery silt loam, 2 to 12 percent slopes, occasionally flooded	2.09	1.0%		> 6.5ft.	Well drained	IVc	20	51
586C2	Nodine-Rollingstone silt loams, 4 to 12 percent slopes, eroded	1.99	0.9%		> 6.5ft.	Well drained	IIIc	67	67

Soils data provided by USDA and NRCS.



Code	Soil Description	Acres	Percent of field	PI Legend	Restrictive Layer	Soil Drainage	Non-Irr Class *c	Productivity Index	*n NCCPI Overall
N583B	Fayette silt loam, 2 to 6 percent slopes	1.23	0.6%		> 6.5ft.	Well drained	Ile	85	88
<b>Weighted Average</b>							<b>5.65</b>	<b>19</b>	<b>*n 30.9</b>

\*n: The aggregation method is "Weighted Average using all components"

\*c: Using Capabilities Class Dominant Condition Aggregation Method