

Aerial Map

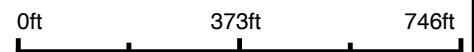


Glenwood
16-98N-7W

138th Ave

©2026 AgriData, Inc.

Boundary Center: 43° 18' 14.87, -91° 40' 16.38

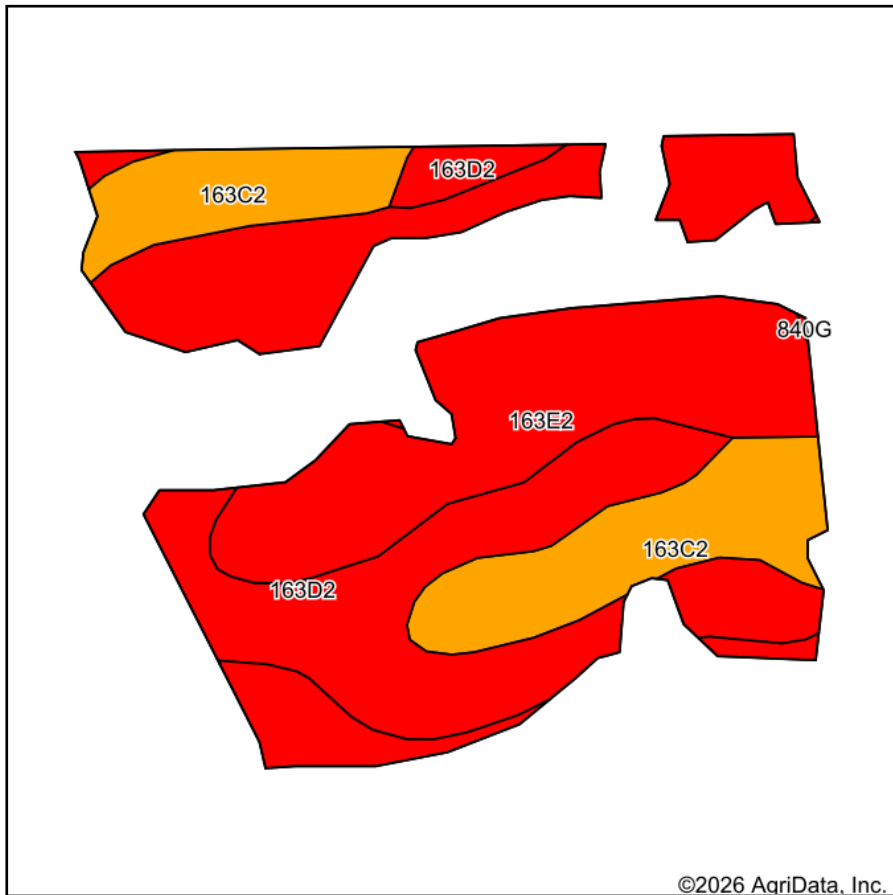


16-98N-7W
Winneshiek County
Iowa

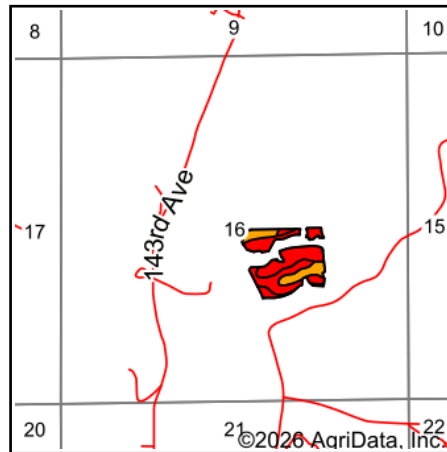


4/20/2026

Soils Map



Soils data provided by USDA and NRCS.



State: **Iowa**
 County: **Winneshiek**
 Location: **16-98N-7W**
 Township: **Glenwood**
 Acres: **19**
 Date: **4/20/2026**



Maps Provided By:



© AgriData, Inc. 2025

www.AgriDataInc.com



©2026 AgriData, Inc.

Area Symbol: IA191, Soil Area Version: 34

Code	Soil Description	Acres	Percent of field	CSR2 Legend	Restrictive Layer	Soil Drainage	Non-Irr Class *c	*i Corn Bu	*i Alfalfa Tons	*i Soybeans Bu	*i Bluegrass Tons	*i Tall Grasses Tons	*i Water-Holding Inch	CSR2**	
163E2	Fayette silt loam, 14 to 18 percent slopes, moderately eroded	9.21	48.5%		> 6.5ft.	Well drained	IVe	140.8	3.9	40.8	2.5	4.2	11.6	35	
163D2	Fayette silt loam, 9 to 14 percent slopes, moderately eroded	5.57	29.3%		> 6.5ft.	Well drained	IIIe	164.8	4.6	47.8	3.0	4.9	11.6	46	
163C2	Fayette silt loam, 5 to 9 percent slopes, moderately eroded	4.22	22.2%		> 6.5ft.	Well drained	IIIe	193.6	5.4	56.1	3.5	5.8	11.6	72	
Weighted Average								3.48	159.6	4.4	46.3	2.9	4.8	11.6	46.4

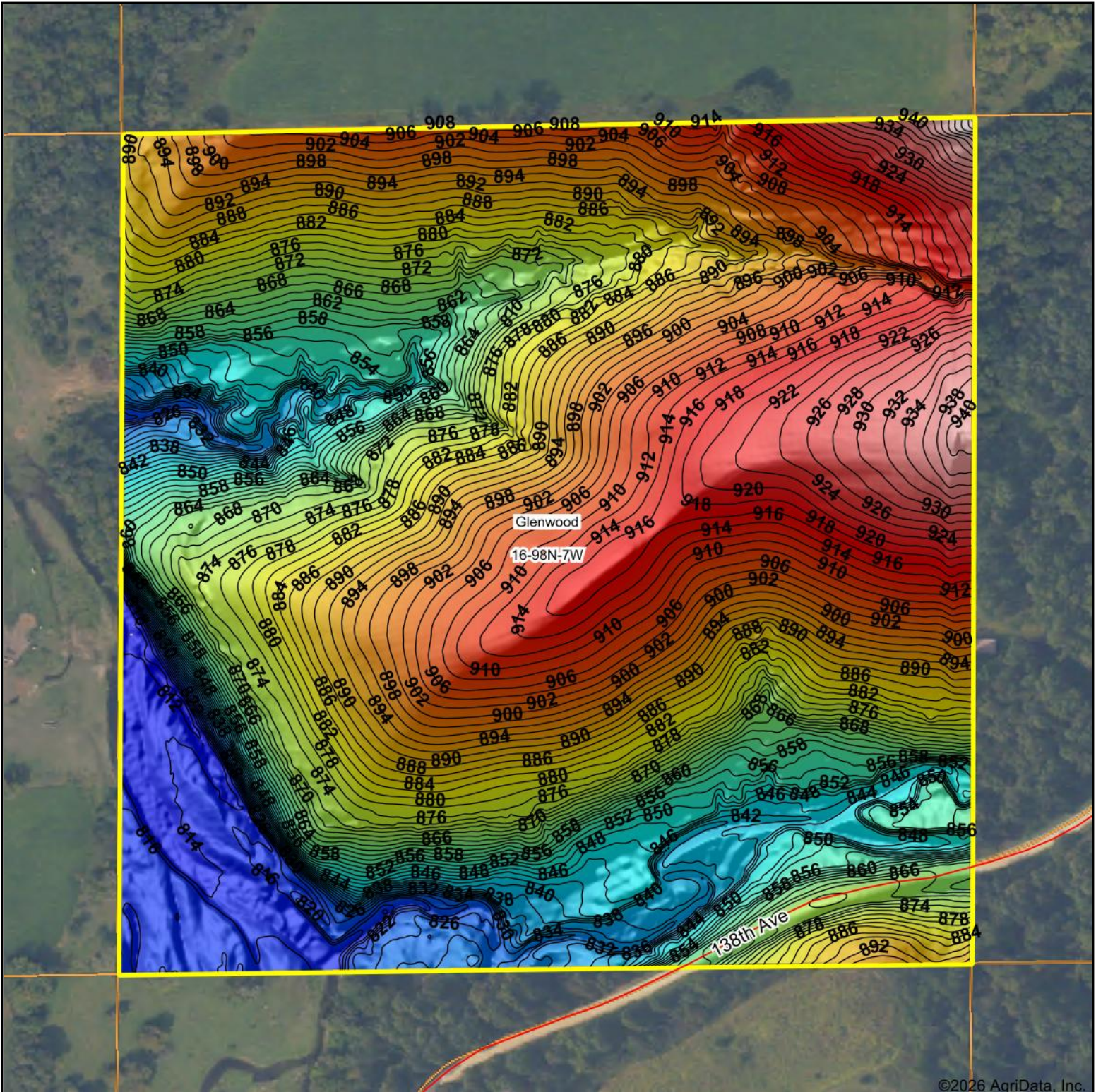
**IA has updated the CSR values for each county to CSR2.

*i Yield data provided by the ISPAID Database version 8.1.1 developed by IA State University.

*c: Using Capabilities Class Dominant Condition Aggregation Method

Soils data provided by USDA and NRCS.

Topography Hillshade



©2026 AgriData, Inc.



Maps Provided By:



© AgriData, Inc. 2025

www.AgriDataInc.com

Source: USGS 1 meter dem

Interval(ft): 2

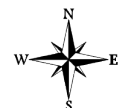
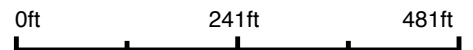
Min: 811.4

Max: 952.3

Range: 140.9

Average: 879.4

Standard Deviation: 31.2 ft

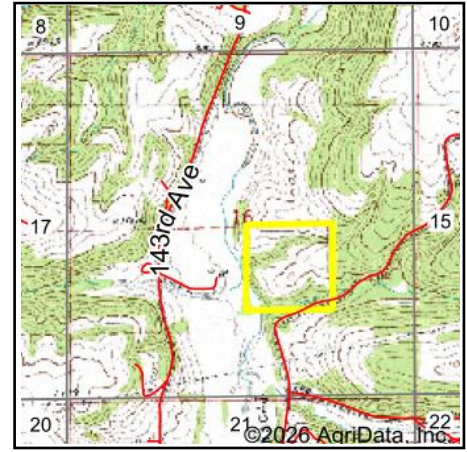


4/20/2026

16-98N-7W
Winneshiek County
Iowa

Boundary Center: 43° 18' 14.87, -91° 40' 16.38

Wetlands Map



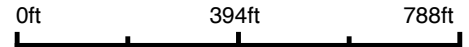
State: Iowa
Location: 16-98N-7W
County: Winneshiek
Township: Glenwood
Date: 4/20/2026



Maps Provided By:



© AgriData, Inc. 2025 www.AgriDataInc.com



Classification Code	Type	Acres
R4SBC	Riverine	0.49
R2UBG	Riverine	0.34
Total Acres		0.83

Data Source: National Wetlands Inventory website. U.S. DoI, Fish and Wildlife Service, Washington, D.C. <http://www.fws.gov/wetlands/>