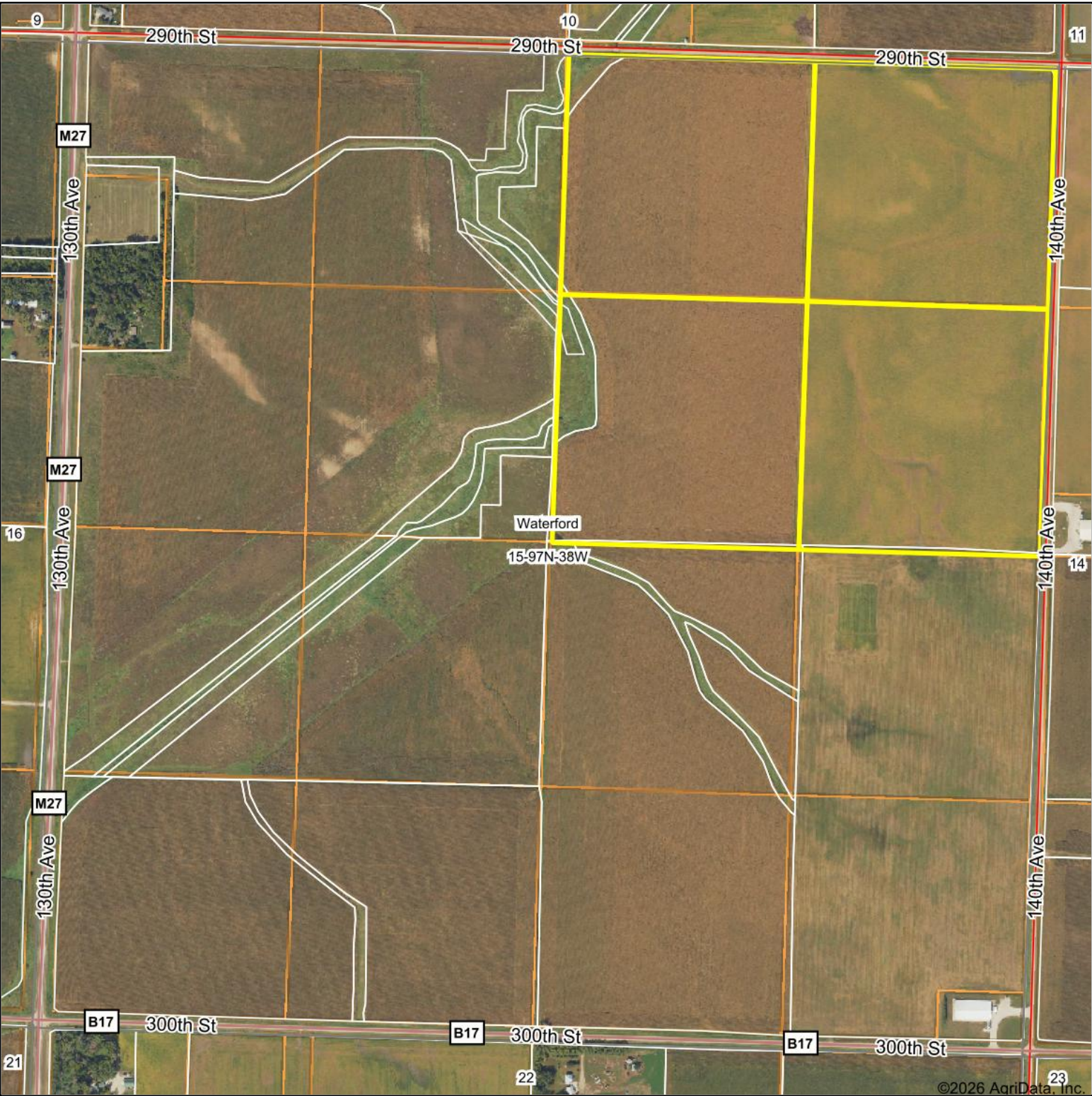
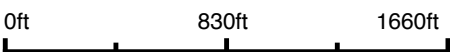


Aerial Map



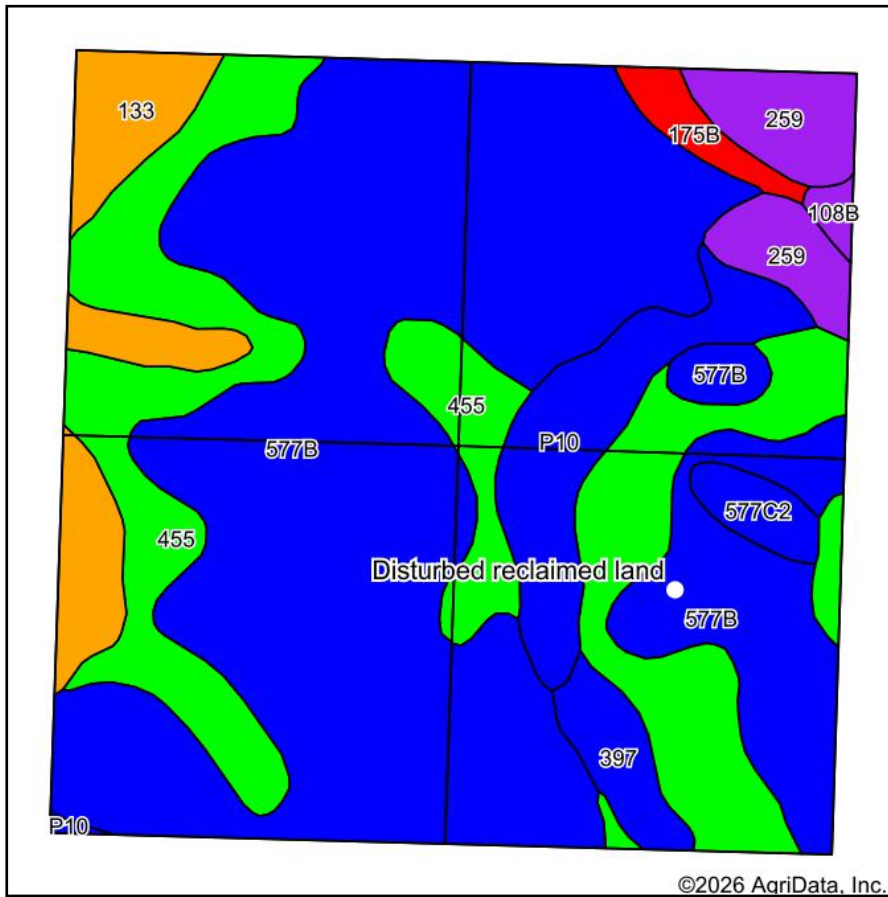
Boundary Center: 43° 13' 23.99, -95° 18' 49.6



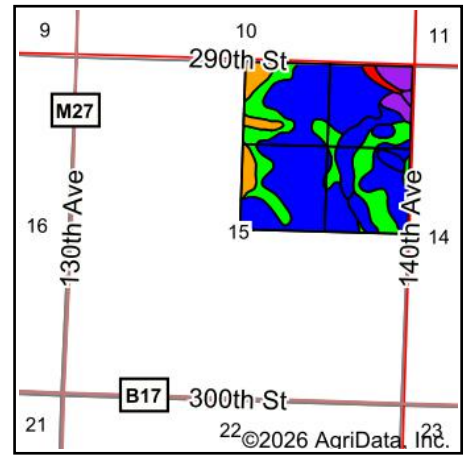
15-97N-38W
Clay County
Iowa



Soils Map



Soils data provided by USDA and NRCS.



State: **Iowa**
 County: **Clay**
 Location: **15-97N-38W**
 Township: **Waterford**
 Acres: **154.58**
 Date: **2/18/2026**

Maps Provided By:



Area Symbol: IA041, Soil Area Version: 35

Code	Soil Description	Acres	Percent of field	CSR2 Legend	Restrictive Layer	Soil Drainage	Non-Irr Class *c	*j Corn Bu	*j Alfalfa Tons	*j Soybeans Bu	*j Bluegrass Tons	*j Tall Grasses Tons	*j Water-Holding Inch	CSR2**	CSR	*N O
577B	Everly clay loam, 2 to 5 percent slopes	86.56	56.0%		> 6.5ft.	Moderately well drained	Ile	225.6	6.3	65.4	4.1	6.8	10.5	88	68	
455	Wilmington clay loam, 1 to 3 percent slopes	35.20	22.8%		> 6.5ft.	Somewhat poorly drained	Ile	233.6	6.1	67.7	4.2	7.0	11.2	91	74	
P10	Afton silty clay loam, Sheldon creek formation, 0 to 2 percent slopes, occasionally flooded	9.41	6.1%		> 6.5ft.	Poorly drained	Ilw	80.0	1.7	23.2	1.4	2.4	0.0	82		
133	Colo silty clay loam, deep loess, 0 to 2 percent slopes, occasionally flooded	9.19	5.9%		> 6.5ft.	Poorly drained	Ilw	204.8	4.3	59.4	3.7	6.1	11.8	78	73	
259	Biscay clay loam, 0 to 2 percent slopes	6.59	4.3%		> 6.5ft.	Poorly drained	Ilw	80.0	1.7	23.2	1.4	2.4	7.5	52	70	

Soils data provided by USDA and NRCS.

Code	Soil Description	Acres	Percent of field	CSR2 Legend	Restrictive Layer	Soil Drainage	Non-Irr Class *c	*j Corn Bu	*i Alfalfa Tons	*i Soybeans Bu	*j Bluegrass Tons	*i Tall Grasses Tons	*i Water-Holding Inch	CSR2**	CSR	*n O
397	Letri clay loam, 0 to 2 percent slopes	3.12	2.0%		> 6.5ft.	Poorly drained	Ilw	224.0	4.7	65.0	4.0	6.7	11.1	90	72	
577C2	Everly clay loam, 5 to 9 percent slopes, moderately eroded	1.95	1.3%		> 6.5ft.	Moderately well drained	Ille	204.8	5.7	59.4	3.7	6.1	10.5	83	51	
175B	Dickinson fine sandy loam, 2 to 5 percent slopes	1.93	1.2%		> 6.5ft.	Somewhat excessively drained	Ille	80.0	2.2	23.2	1.4	2.4	5.3	47	36	
108B	Wadena loam, 2 to 6 percent slopes	0.63	0.4%		> 6.5ft.	Well drained	Ile	80.0	2.2	23.2	1.4	2.4	5.6	52	47	
Weighted Average							1.80	208.4	5.6	60.4	3.8	6.3	9.9	85.5	*-	

**IA has updated the CSR values for each county to CSR2.

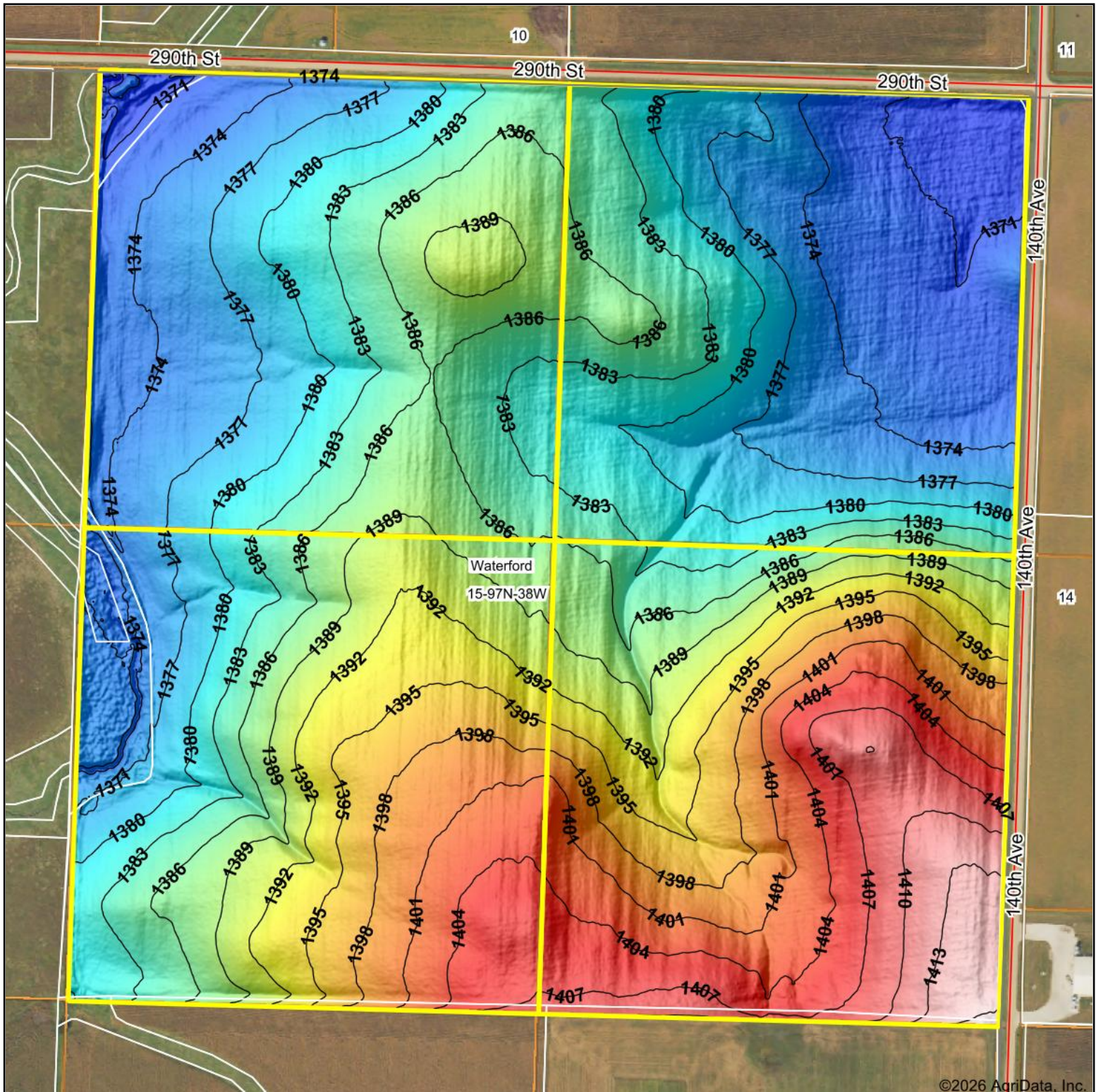
*- CSR weighted average cannot be calculated on the current soils data, use prior data version for csr values.*i Yield data provided by the ISPAID Database version 8.1.1 developed by IA State University.

*n: The aggregation method is "Weighted Average using all components"

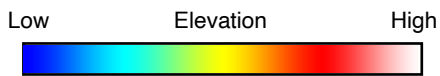
*c: Using Capabilities Class Dominant Condition Aggregation Method

	Symbol	Name	Description
	DRL	Disturbed reclaimed land	An area where the soil profile is disturbed but little or no soil material has been removed. Typically .25 to 2 acres.

Topography Hillshade



©2026 AgriData, Inc.



Source: USGS 1 meter dem

Interval(ft): 3

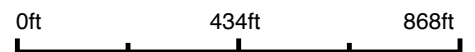
Min: 1,368.6

Max: 1,417.4

Range: 48.8

Average: 1,387.1

Standard Deviation: 11.19 ft



2/18/2026

15-97N-38W
Clay County
Iowa

Boundary Center: 43° 13' 23.99, -95° 18' 49.6

Maps Provided By:

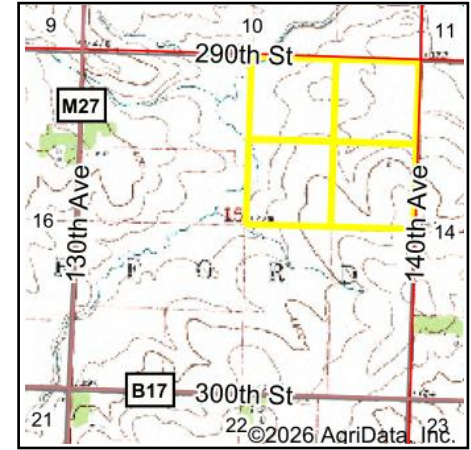
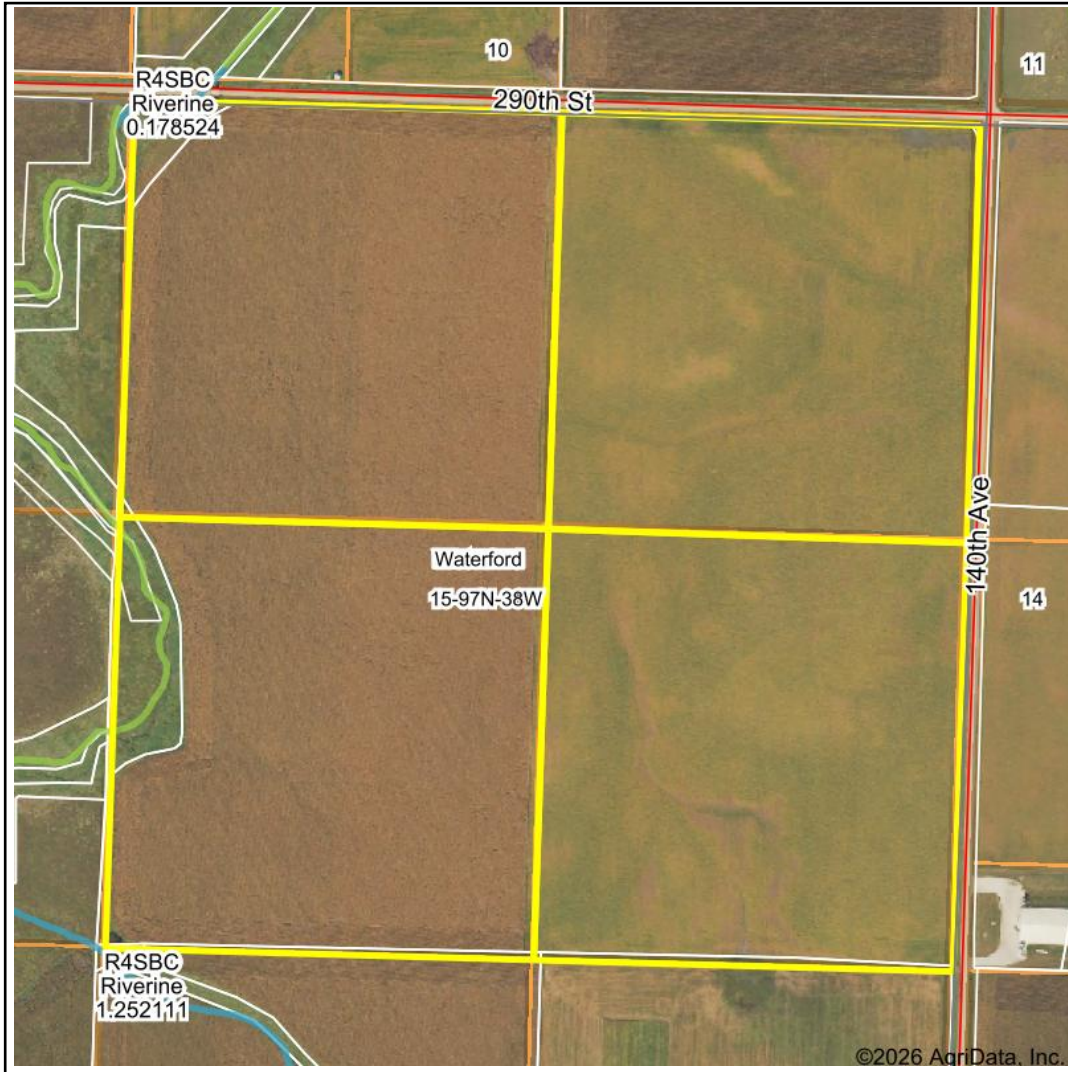


© AgriData, Inc. 2025

www.AgriDataInc.com

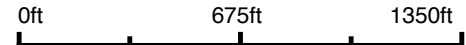
Field borders provided by Farm Service Agency as of 5/21/2008.

Wetlands Map



State: **Iowa**
 Location: **15-97N-38W**
 County: **Clay**
 Township: **Waterford**
 Date: **2/18/2026**

Maps Provided By:



	Classification Code	Type	Acres
	PEM1C	Freshwater Emergent Wetland	0.34
	R4SBC	Riverine	0.07
	Total Acres		0.41

Data Source: National Wetlands Inventory website. U.S. DoI, Fish and Wildlife Service, Washington, D.C. <http://www.fws.gov/wetlands/>