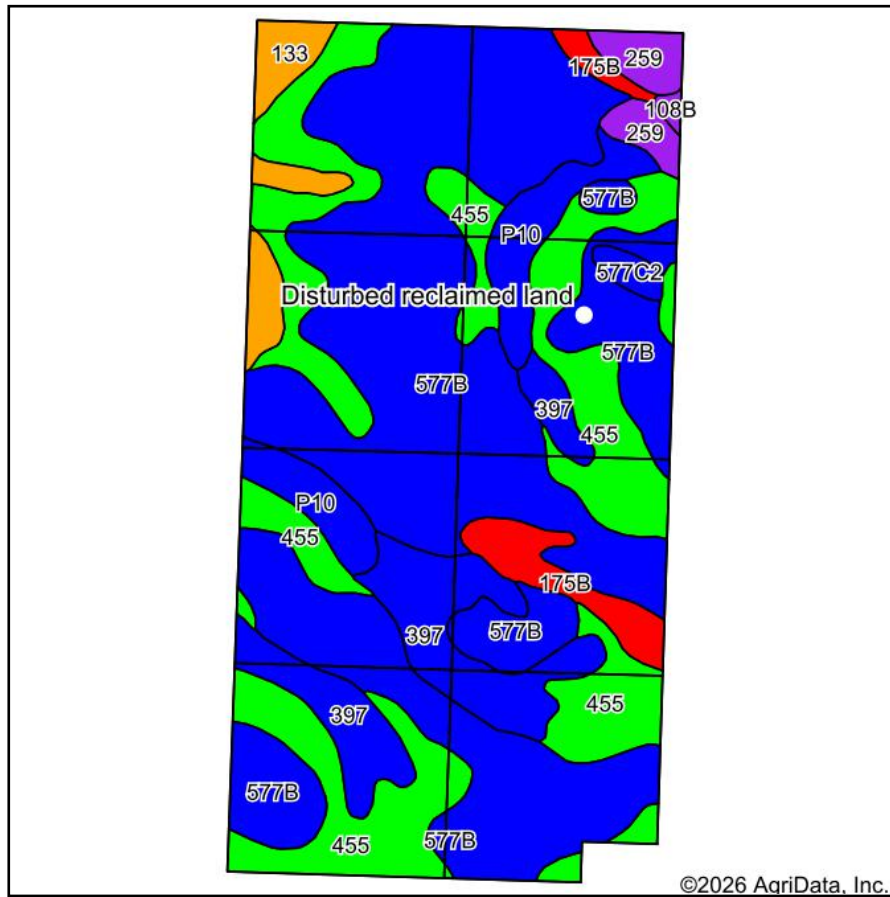




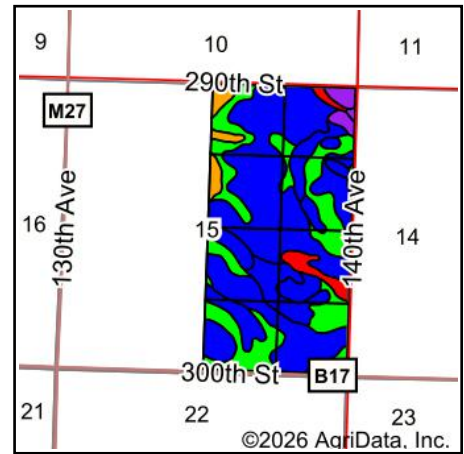
Boundary 1



# Soils Map



Soils data provided by USDA and NRCS.



State: **Iowa**  
 County: **Clay**  
 Location: **15-97N-38W**  
 Township: **Waterford**  
 Acres: **306.1**  
 Date: **1/20/2026**

Maps Provided By:  
  
 CUSTOMIZED ONLINE MAPPING  
 © AgriData, Inc. 2025 www.AgriDataInc.com



Area Symbol: IA041, Soil Area Version: 35

Code	Soil Description	Acres	Percent of field	CSR2 Legend	Restrictive Layer	Soil Drainage	Non-Irr Class *c	*i Corn Bu	*i Alfalfa Tons	*i Soybeans Bu	*i Bluegrass Tons	*i Tall Grasses Tons	*i Water-Holding Inch	CSR2**	CSR
577B	Everly clay loam, 2 to 5 percent slopes	157.43	51.5%		> 6.5ft.	Moderately well drained	Ile	225.6	6.3	65.4	4.1	6.8	10.5	88	68
455	Wilmington clay loam, 1 to 3 percent slopes	75.97	24.8%		> 6.5ft.	Somewhat poorly drained	Ie	233.6	6.1	67.7	4.2	7.0	11.2	91	74
397	Letri clay loam, 0 to 2 percent slopes	29.18	9.5%		> 6.5ft.	Poorly drained	Ilw	224.0	4.7	65.0	4.0	6.7	11.1	90	72
P10	Afton silty clay loam, Sheldon creek formation, 0 to 2 percent slopes, occasionally flooded	15.56	5.1%		> 6.5ft.	Poorly drained	Ilw	80.0	1.7	23.2	1.4	2.4	0.0	82	
175B	Dickinson fine sandy loam, 2 to 5 percent slopes	9.60	3.1%		> 6.5ft.	Somewhat excessively drained	Ille	80.0	2.2	23.2	1.4	2.4	5.3	47	36

Soils data provided by USDA and NRCS.

Code	Soil Description	Acres	Percent of field	CSR2 Legend	Restrictive Layer	Soil Drainage	Non-Irr Class *c	*i Corn Bu	*i Alfalfa Tons	*i Soybeans Bu	*i Bluegrass Tons	*i Tall Grasses Tons	*i Water-Holding Inch	CSR2**	CSR
133	Colo silty clay loam, deep loess, 0 to 2 percent slopes, occasionally flooded	9.19	3.0%		> 6.5ft.	Poorly drained	Ilw	204.8	4.3	59.4	3.7	6.1	11.8	78	73
259	Biscay clay loam, 0 to 2 percent slopes	6.59	2.2%		> 6.5ft.	Poorly drained	Ilw	80.0	1.7	23.2	1.4	2.4	7.5	52	70
577C2	Everly clay loam, 5 to 9 percent slopes, moderately eroded	1.95	0.6%		> 6.5ft.	Moderately well drained	Ille	204.8	5.7	59.4	3.7	6.1	10.5	83	51
108B	Wadena loam, 2 to 6 percent slopes	0.63	0.2%		> 6.5ft.	Well drained	Ile	80.0	2.2	23.2	1.4	2.4	5.6	52	47
Weighted Average							1.79	211.3	5.6	61.3	3.8	6.3	10	86.2	*-

\*\*IA has updated the CSR values for each county to CSR2.

\*- CSR weighted average cannot be calculated on the current soils data, use prior data version for csr values.\*i Yield data provided by the ISPAID Database version 8.1.1 developed by IA State University.

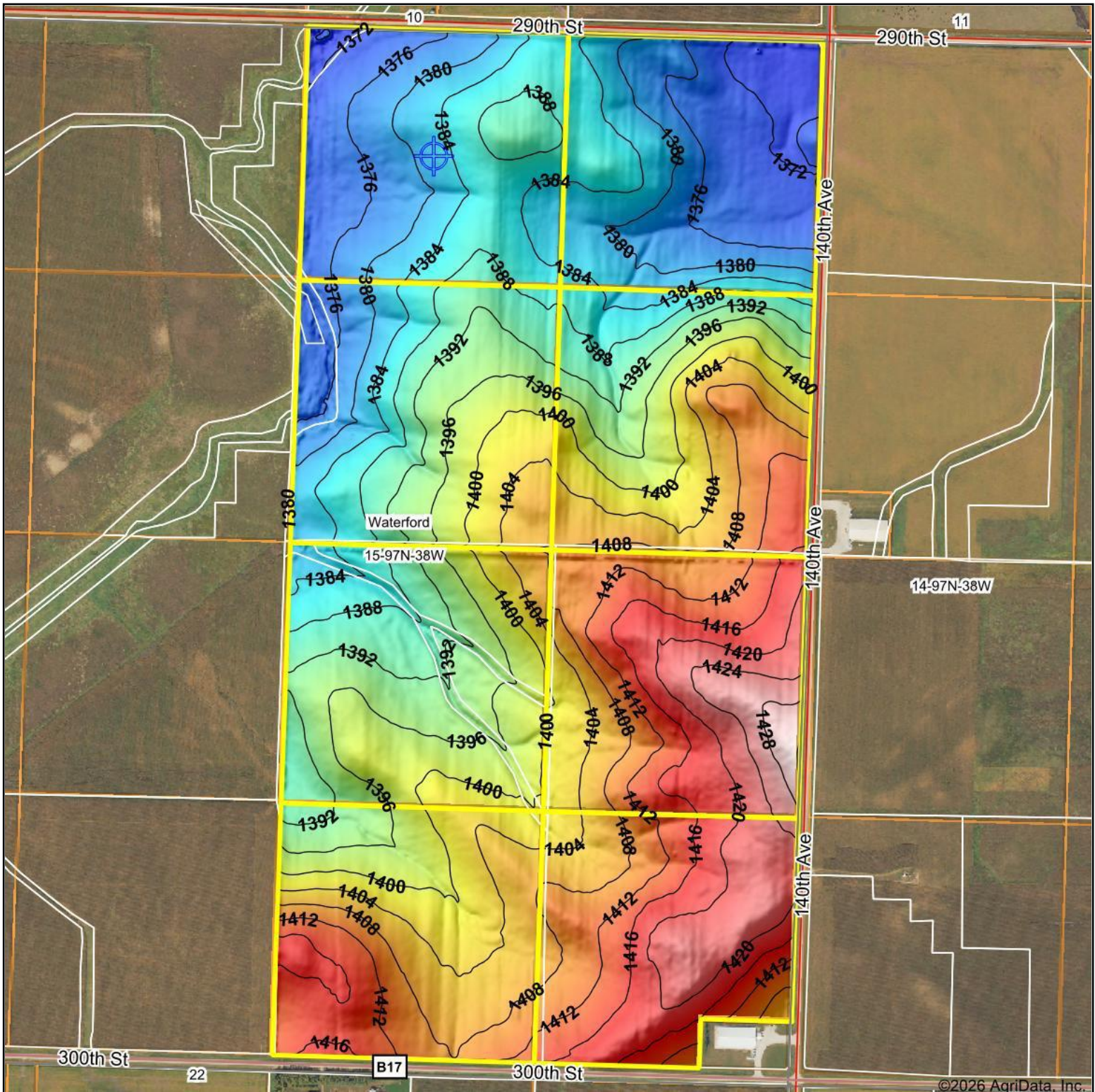
\*n: The aggregation method is "Weighted Average using all components"

\*c: Using Capabilities Class Dominant Condition Aggregation Method

	Symbol	Name	Description
	DRL	Disturbed reclaimed land	An area where the soil profile is disturbed but little or no soil material has been removed. Typically .25 to 2 acres.



# Topography Hillshade



Source: USGS 3 meter dem

Interval(ft): 4

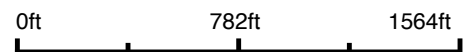
Min: 1,368.6

Max: 1,433.1

Range: 64.5

Average: 1,397.0

Standard Deviation: 14.73 ft



**15-97N-38W**  
**Clay County**  
**Iowa**

Boundary Center: 43° 13' 11.23, -95° 18' 49.74

Maps Provided By:



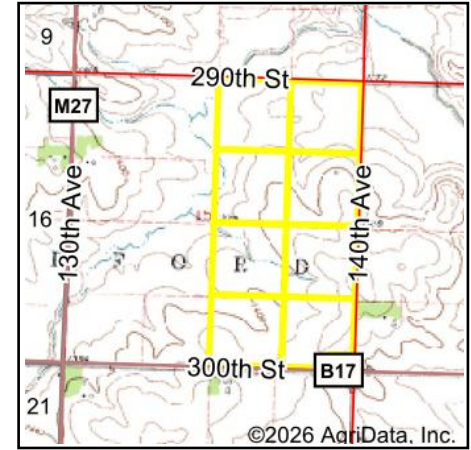
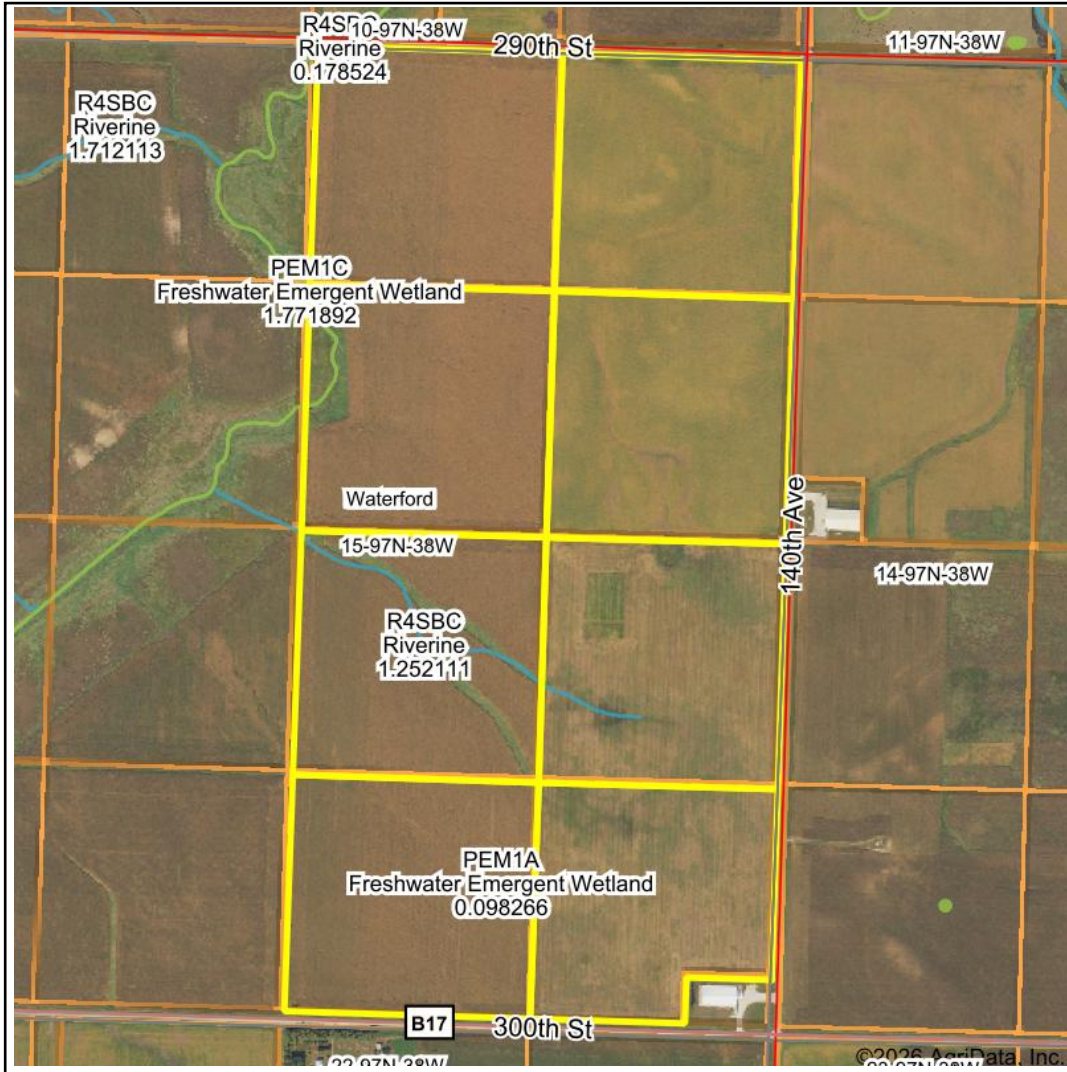
© AgriData, Inc. 2025

www.AgriDataInc.com

Field borders provided by Farm Service Agency as of 5/21/2008.



# Wetlands Map



State: **Iowa**  
 Location: **15-97N-38W**  
 County: **Clay**  
 Township: **Waterford**  
 Date: **1/20/2026**

Maps Provided By:  
  
 CUSTOMIZED ONLINE MAPPING  
 © AgriData, Inc. 2025 www.AgriDataInc.com



0ft 1181ft 2362ft

Classification Code	Type	Acres
R4SBC	Riverine	1.08
PEM1C	Freshwater Emergent Wetland	0.34
PEM1A	Freshwater Emergent Wetland	0.10
Total Acres		1.52

Data Source: National Wetlands Inventory website. U.S. DoI, Fish and Wildlife Service, Washington, D.C. <http://www.fws.gov/wetlands/>