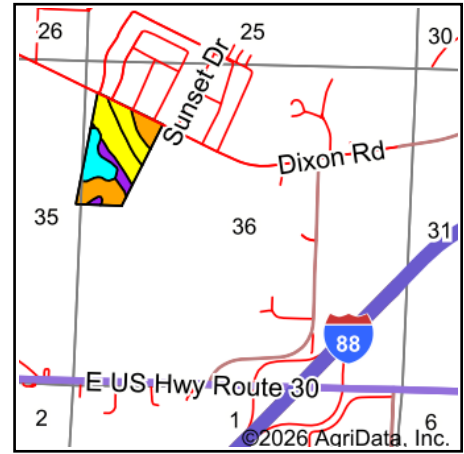
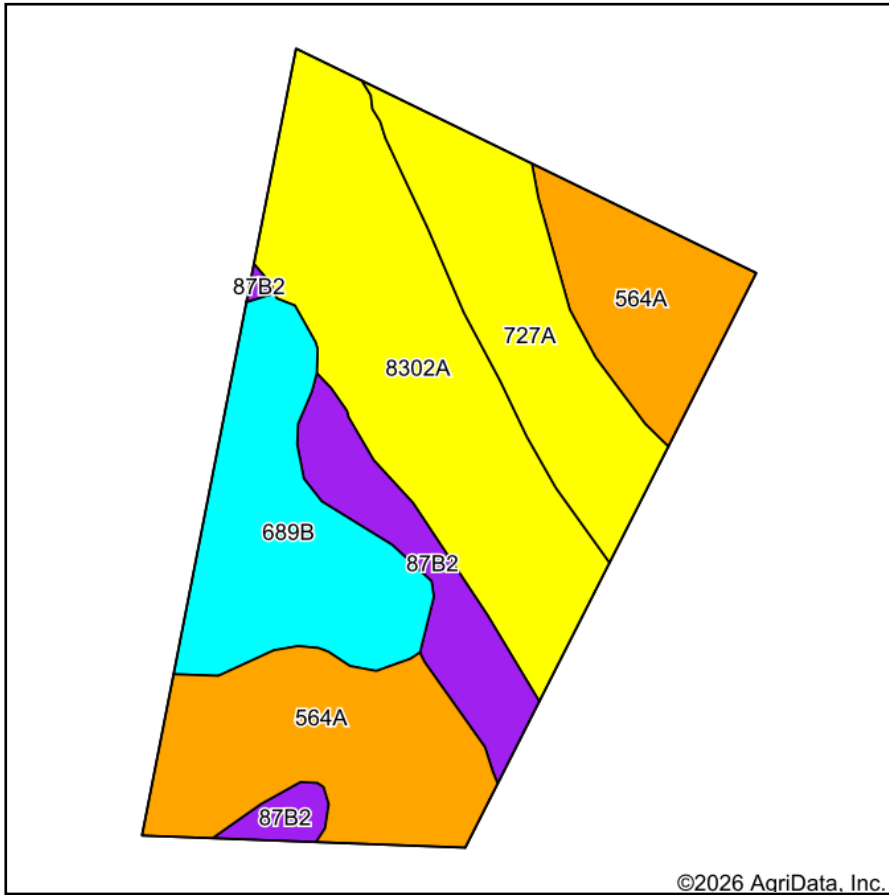


Soils Map



State: **Illinois**
 County: **Whiteside**
 Location: **36-21N-7E**
 Township: **Coloma**
 Acres: **35.67**
 Date: **3/31/2026**



Soils data provided by USDA and NRCS.

Area Symbol: IL195, Soil Area Version: 24

Code	Soil Description	Acres	Percent of field	Il. State Productivity Index Legend	Restrictive Layer	Soil Drainage	*Subsoil rooting a	*Corn Bu/A	*Soybeans Bu/A	*Wheat Bu/A	*Oats Bu/A b	*Grass-legume hay, T/A	*Crop productivity index for optimum management	*n NC Over
**8302A	Ambraw loam, 0 to 2 percent slopes, occasionally flooded	10.41	29.1%		> 6.5ft.	Poorly drained	FAV	**159	**51	**63	**77	**5.00	**117	
564A	Waukegan silt loam, 0 to 2 percent slopes	9.97	28.0%		> 6.5ft.	Well drained	FAV	162	53	63	82	4.00	119	
**689B	Coloma sand, 1 to 7 percent slopes	6.12	17.2%		> 6.5ft.	Excessively drained	FAV	**99	**31	**45	**51	**3.00	**74	
**727A	Waukee loam, 0 to 2 percent slopes	5.70	16.0%		2.8ft. (Strongly contrasting textural stratification)	Well drained	FAV	**148	**49	**60	**75	**4.00	**110	
**87B2	Dickinson sandy loam, 2 to 7 percent slopes, eroded	3.47	9.7%		> 6.5ft.	Well drained	FAV	**134	**44	**53	**70	**3.00	**98	
Weighted Average								145.4	47.1	58.5	72.9	4	107.2	*n

Soils data provided by USDA and NRCS. Soils data provided by University of Illinois at Champaign-Urbana.



Table: Optimum Crop Productivity Ratings for Illinois Soil EFOTG are sourced from Bulletin 811 calculated Map Unit Base Yield Indices, and adjusted (Adj) for slope, erosion, and surface texture. Publication Date: 02-08-2023

Crop yields and productivity (B811 EFOTG) are maintained at the following USDA web site: 2023 Illinois Soil Productivity and Yield Indices:
<https://efotg.sc.egov.usda.gov/#/state/IL/documents/section=2&folder=52809>

* The flood/pond factor has been removed for B811 indexes and yields.

** Base indexes from Bulletin 811 adjusted for slope, erosion, and surface texture according to the II. Soils EFOTG

b Soils in the southern region were not rated for oats and are shown with a zero "0".

e Soils in the well drained group were not rated for grass-legume and are shown with a zero "0".

*n: The aggregation method is "Weighted Average using all components"