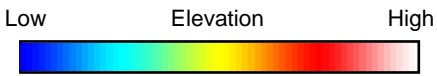
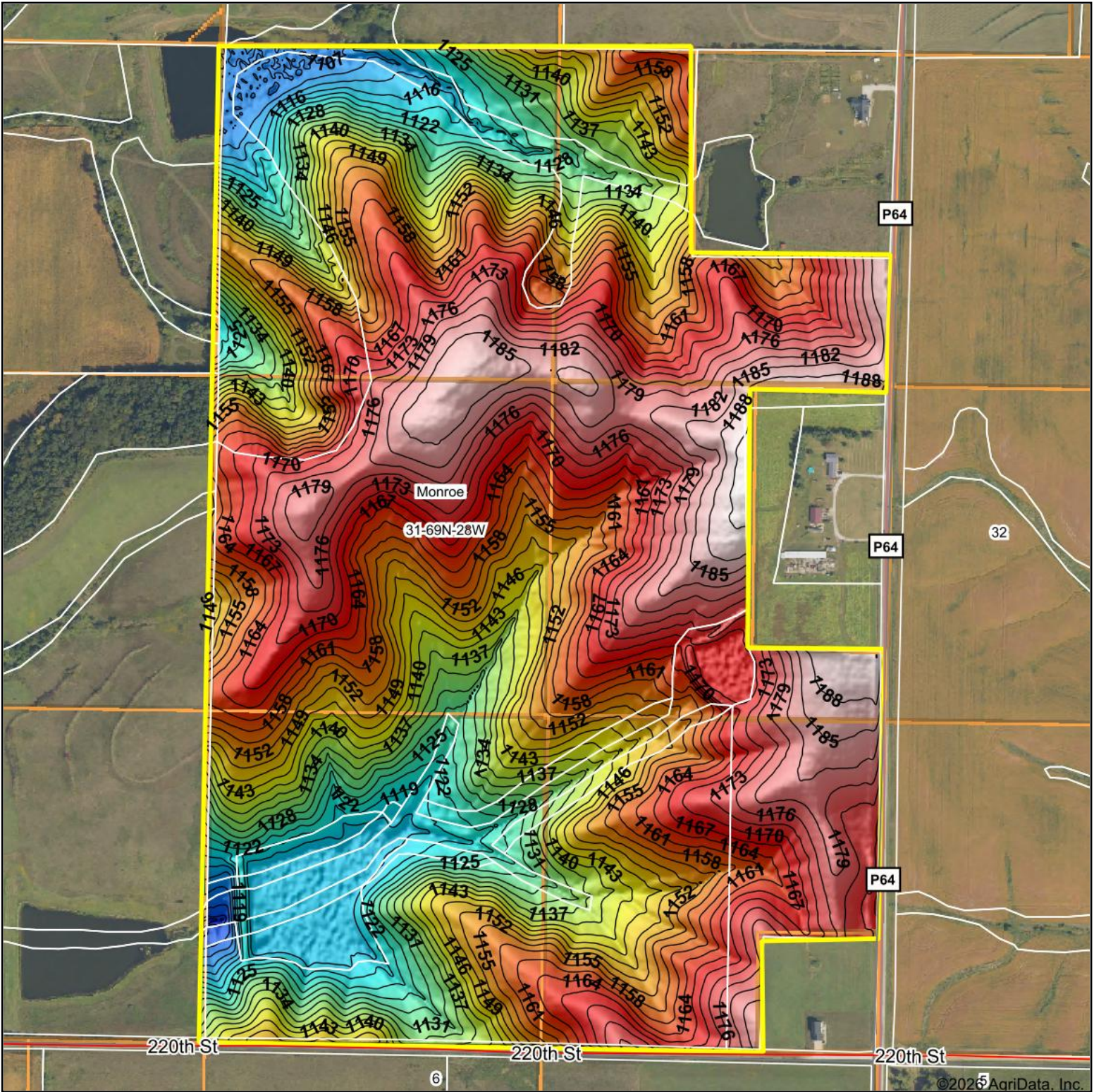


Topography Hillshade



Source: USGS 3 meter dem

Interval(ft): 3

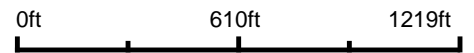
Min: 1,098.8

Max: 1,192.7

Range: 93.9

Average: 1,154.0

Standard Deviation: 21.19 ft



31-69N-28W
Ringgold County
Iowa

Boundary Center: 40° 43' 49.43, -94° 6' 52.58

Maps Provided By:



© AgriData, Inc. 2025 www.AgriDataInc.com

Field borders provided by Farm Service Agency as of 5/21/2008.